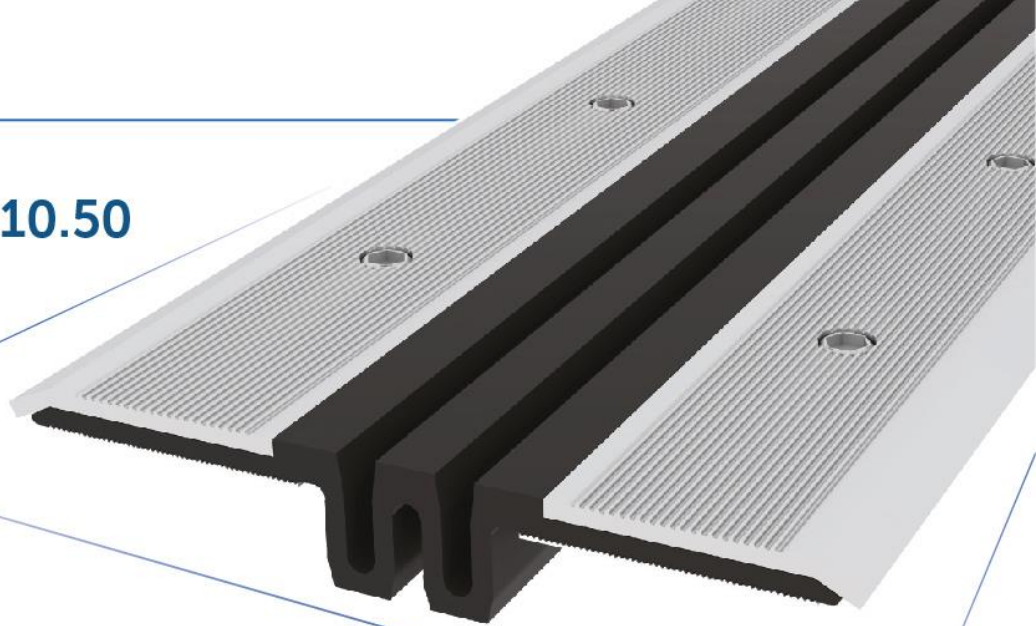


conecto Park SL 210.50

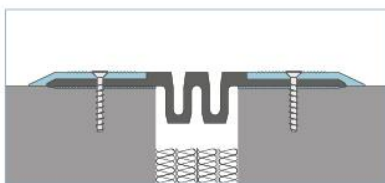


conecto Park SL

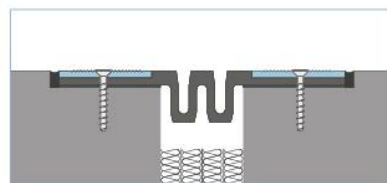
The system is highly appreciated by the designers for its aesthetic look, executives for easy installation and investors for efficiency, reliability as well as affordable price. Because of the long term warranty, our system became a highly priced solution for new facilities, especially for parking lots requiring immediate reconstruction where old systems did not prove themselves. In situations where heat

insulation and concrete overlay are required, for example in parking lots located above a lease and trade area, it is possible to use an additional tight membrane in the floor slab insulation. The profile has successfully undergone a variety of aging resistance tests proving its durability and effectiveness. The system is resistant to aggressive media (for example gasoline, diesel fuel, oils,

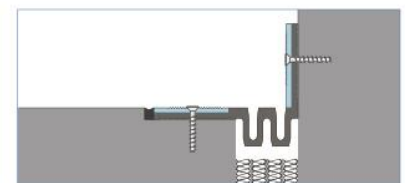
lubricants), UV rays and external conditions. The profile meets the class E fire resistance requirements in accordance with PN-EN 13501-1 standard, which requires that products are capable of resisting - for a short period of time - the influence of a small flame without considerably spreading it.



SL 210.50 N



SL 210.50 W



SL 210.50 CV

Profile type conecto Park SL	Visible element (mm)	Joint width (mm)	Method of installation	Installation height (mm)	Material type	Maximum load (kN)	Horizontal/Vertical compensation (mm)
SL 210.50 N	235	50÷70	cover	10	Aluminum, EPDM	600	60 (±30) 40 (±20)
SL 210.50 W	210	50÷70	groove installation	groove 10	Aluminum, EPDM	600	60 (±30) 40 (±20)
SL 210.50 CV	145	50÷70	wall-mounted	10	Aluminum, EPDM	600	60 (±30) 40 (±20)