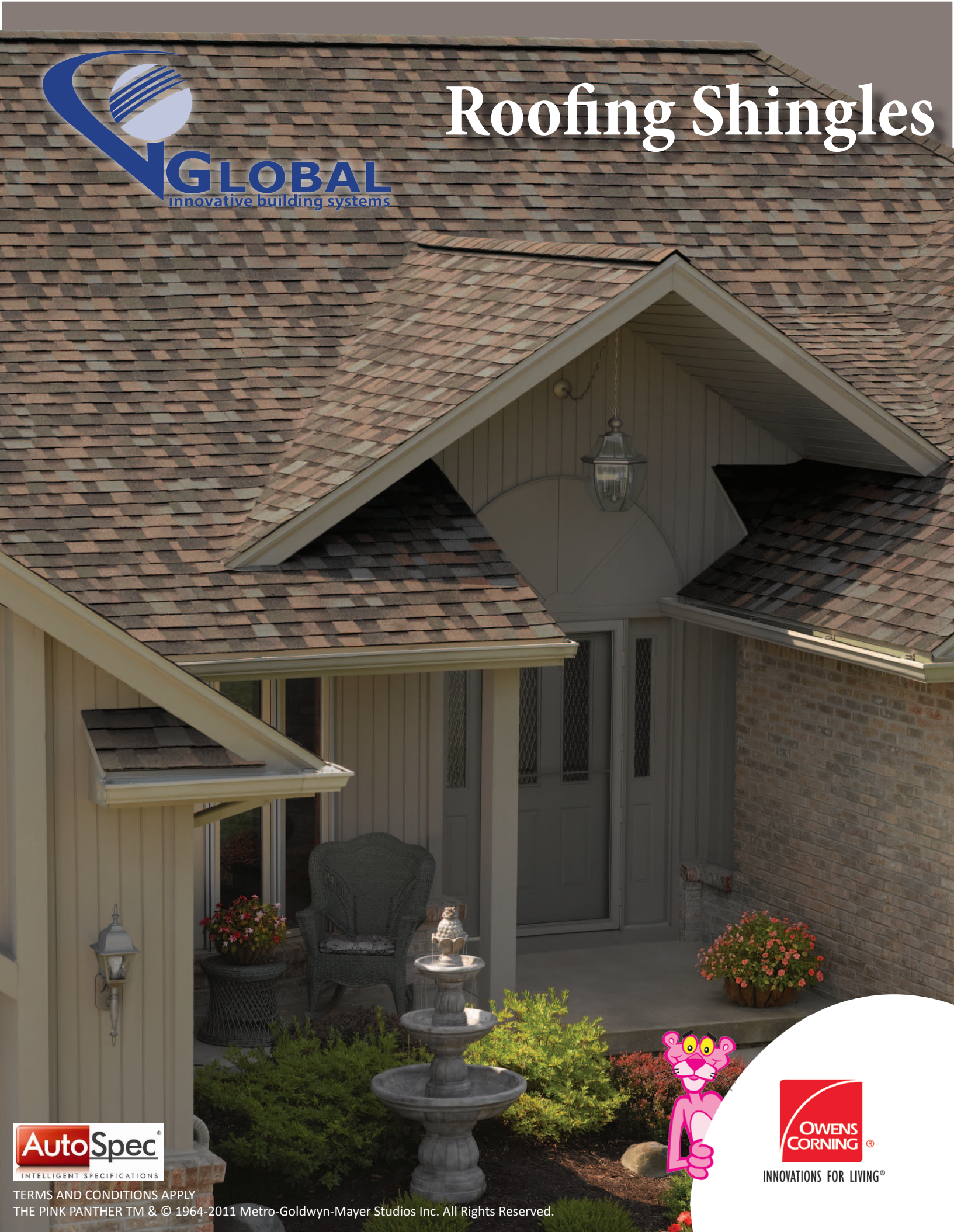




Roofing Shingles



TERMS AND CONDITIONS APPLY
THE PINK PANTHER TM & © 1964-2011 Metro-Goldwyn-Mayer Studios Inc. All Rights Reserved.



Oakridge® Shingles have a warm, inviting look in popular colours, that gives a neat and stylish dimension to a roof. A 30-Year Limited Warranty* with 112 KMH Wind Resistance Limited Warranty*, along with its Algae Resistance Limited Warranty, adds extra appeal to a Shingles roof.

Oakridge® Shingles Product Specifications

Nominal Size	336mm x 1000mm
Exposure	142mm
Coverage per Pack	3m ²

Applicable Standards and Codes

ASTM E 108, Class A Fire	ASTM D 3462
ASTM D 3161, Class F Wind	ASTM D 228
ASTM D 7158, Class H Wind	UL 790, Class A
ASTM D 3018, Type 1	
SABS Approved	
* R Values on request	

Oakridge® Shingles



Brownwood



Onyx Black



Estate Grey

Alternative Colours or Styles +/- 6-8 weeks lead time (Refer Website)

Supreme® Three-Tab Shingles — the smart choice when you need to balance curb appeal, weather resistance and value. Supreme Shingles come with a 25-Year Limited Warranty,* 96KMH Wind Resistance Limited Warranty,* and Class A UL Fire Rating—the industry’s highest. Algae Resistance is also an option.

Supreme® Shingles Product Specifications

Nominal Size	305mm x 915mm
Exposure	127mm
Coverage per Pack	3m ²

Applicable Standards and Codes

ASTM E 108, Class A Fire	ASTM D 228
ASTM D 3161, Class F Wind	UL 790, Class A
ASTM D 7158, Class H Wind	ICC ESR 1372§
ASTM D 3018, Type 1	
ASTM D 3462	
SABS Approved	
* R Values on request	

Supreme® Shingles



Brownwood



Onyx Black



Estate Grey

Alternative Colours or Styles +/- 6-8 weeks lead time (Refer Website)

“Look out for the New and Improved TruDefinition™ Duration® Shingle with SureNail® Technology”

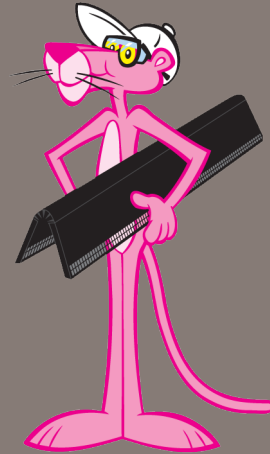


Oakridge® / Supreme® Roofing Shingles

The Owens Corning High Performance Shingle Roofing System has many characteristics which will benefit Developers, Architects and Contractors within the Commercial, Residential and Industrial development sectors.

Product Attributes:

- Aesthetic appeal
- Wind resistance up to 150 km/hour
- Excellent colour fastness
- Cost effectiveness
- Thermal efficiency
- Lightweight (22kg/m²)
- Low maintenance
- High UV Resistance
- 11 degree minimum pitch
- Security



Our Shingle Roofing System is competitively priced and will assist in meeting South Africa's new Legislation with regard to energy saving and the Building Industries demands for lightweight building solutions.

Venture® A Unique Natural Ventilation System

A balanced ventilation system allows airflow through the attic space. Wind blowing over the ridge creates a negative pressure that draws the warmer air out of the attic. Replacement air enters through the under eave vents, bathes the underside of the roof, and exits at the ridge cap through ridge vents, roof vents or gable vents. Even with no wind, the natural convection action of rising warm air maintains a continuous airflow along the underside of the roof. A cooler environment is naturally created within the building. It's a system that works all year round with no moving parts or energy consumption. In cooler climates, adding attic insulation will also create ideal living space and comfortable working conditions. In warm climates, ceiling insulation will also help to keep "cool" air from entering the attic, further reducing energy usage on air conditioners.



The essentials for a healthy roofing system.

It takes more than just Shingles to create a high performance roof. It requires a system of products working together with our Shingles to make up a roofing system that helps provide maximum durability for your roof, and the most protection for your home.

- a** VentSure® Ventilation System - is a Patented ventilated system which has a unique design and easily installed between the ridge cap and roof deck. It generates air movement in the attic space balancing both indoor and outdoor temperatures and prevents overbearing heat loads trapped in roof voids. Condensation under the decking is eliminated in winter thus preventing premature ageing of the deck.
- b** Ceiling Insulation
- c** Hip & Ridge Shingles - are designed to enhance the aesthetic appeal of Shingle roof ridge lines and give a neat dimensional character. They are manufactured in a range of colours to compliment all colour codes of our Roof Shingle library.
- d** Shingles - designed with a strong inert bitumen impregnated fiberglass core, imbedded with ceramic granules which offers an extremely colour fast, weather resistant, maintenance free and aesthetically pleasing roof.
- e** Namtex Waterproofing Membrane
- f** Weatherlock® Waterproofing Underlayment - a waterproofing underlay which is self-adhesive for ease of application and which protects eaves, rakes, ridges and valleys from ingress of moisture. This product is specifically engineered to provide solutions to various waterproofing models.
- g** Drip Edge - affords a clean visual trim line also protecting the OSB Board by assisting in the flow of water away from the board edge.
- h** Oriented Strand Board ("OSB") - decking which is strong, water resistant, durable and increases security.



Tel: 011 903 7080/1/2/3/4
Cel: 083 229 4841
Fax: 086 634 7850
Website: www.gissa.co.za
P.O. Box 990454, Kibler Park, 2053
Gauteng, South Africa
Email: tammy@gissa.co.za

