



## SIDE HUNG WINDOW RANGE

### Betcrete Innovative windows.

The SIDE HUNG WINDOW RANGE is a specific range of windows used in conjunction with the standard windows or on it's own.

Betcrete Window consist of the Betcrete Polycrete Outer frame and the Aluminium insert. These windows comes in a specific Range of sizes, various aluminium colour and glass types.

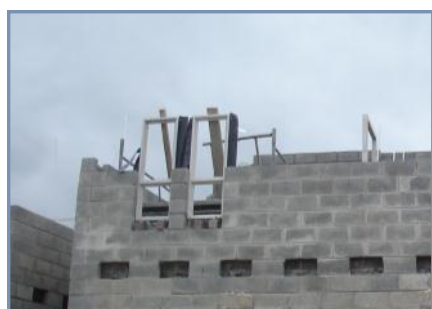
## INDEX with page numbers

PAGE 1/7



Side Hung Windows Sizes

2



Window Installation

3-4



Technical Information

5-7

- Profile of Polycrete outer frame
- Profile of Build in Window
- Window specification

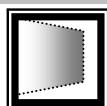


**Betcrete™**  
INNOVATIVE POLYMER PRODUCTS

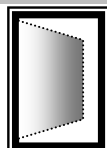


### 600 SIDE HUNG RANGE (WIDTH 590mm)

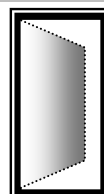
BST66  
590 x 590



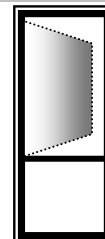
BST69  
590 x 890



BST612  
590 x 1190

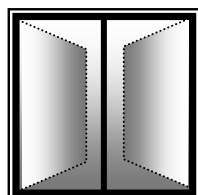


BST615  
590 x 1490

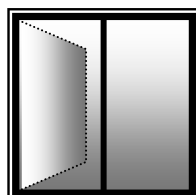


### 1200 SIDE HUNG RANGE (WIDTH 1190mm)

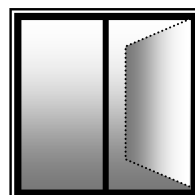
BSTT1212  
1190 x 1190



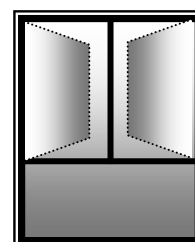
BST1212L  
1190 x 1190



BST1212R  
1190 x 1190



BSTT1215  
1190 x 1490





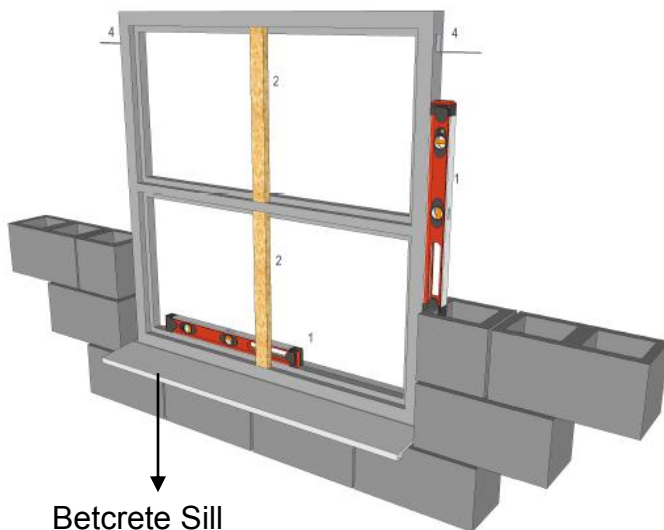
## WINDOW INSTALLATION

PAGE 4/8

Betcrete Polycrete Window frame is standardly build into the wet phase of the Building proses.

Window can also be epoxied in afterwards. Correct opening is important for fitting.

### STANDARD WINDOWFRAME WITH or WIHTOUT BETCRETE SILL

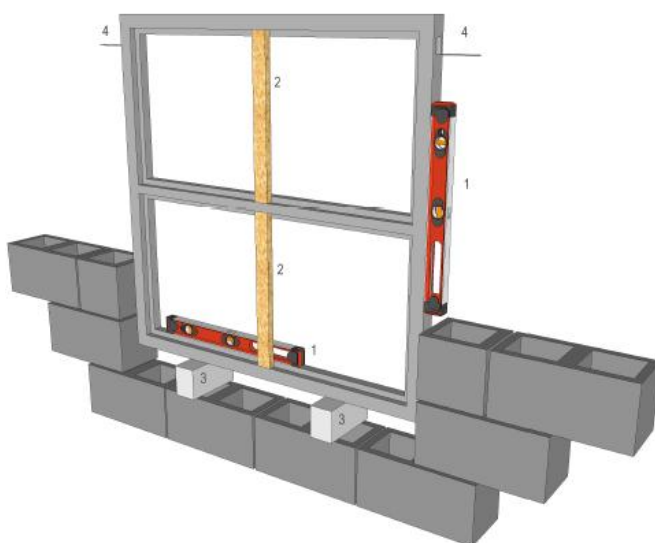


1. Window sill is fitted on top of the brickwork and the window on top of the sill.  
Check and ensure the vertical and horizontal to be level during the wet building phase

2. Use temporary wooden support

3. If no Betcrete Sill is used, wedge the bottom opening (for support)

4. Lugs: bend outward and build between the bricks (for further support)



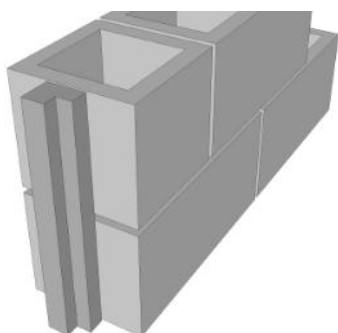


## WINDOW INSTALLATION FITMENT

PAGE 4/8

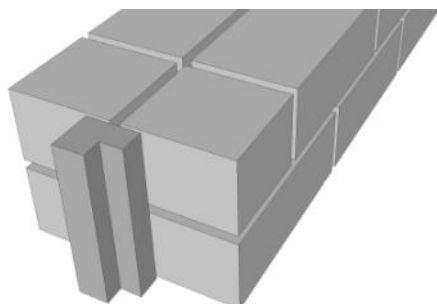
Betcrete Polycrete Window frames can be used on  
140 Block, 230 Wall and 280 Cavity Wall.

### 140 Block



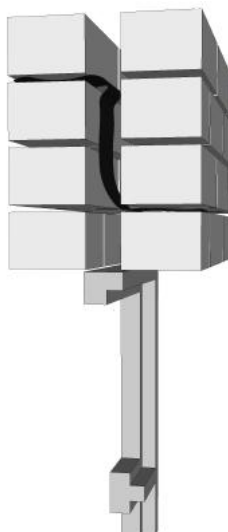
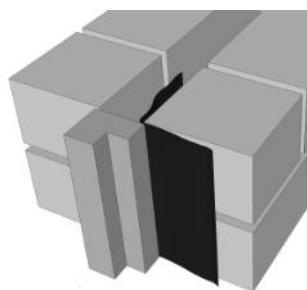
Betcrete Window is fitted to the centre of  
the 140 Block

### 230 Double Wall



Betcrete Window is fitted in the middle of  
the 230 double wall

### 280 Cavity Wall



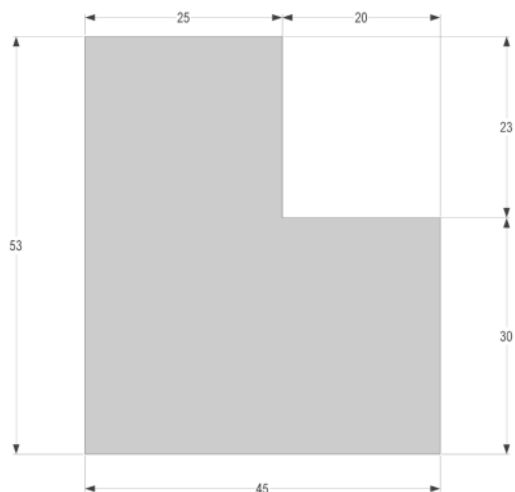
Betcrete Window is fitted over the cavity  
on the 280 Cavity Wall

DPC fitment on drawings

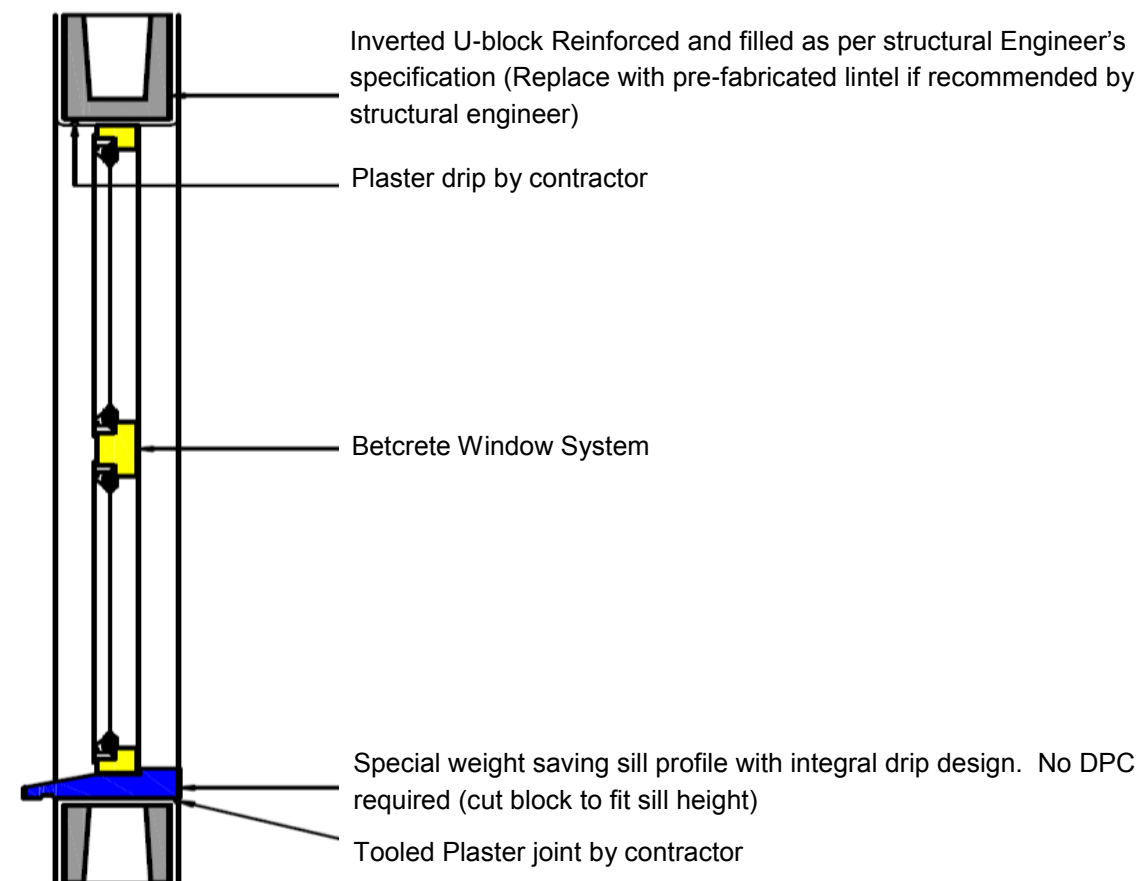


**TECHNICAL INFORMATION : STANDARD WINDOW PROFILE**

PAGE 5/8



**SIDE VIEW : STANDARD CENTRE WINDOW**





Aluminium Beadingless Profile  
30.5mm Casement

GLASS



Betcrete is a member of the AAAMSA group and adhere to SAGGA regulation:

- Max  $0.75\text{m}^2$  = 3mm Glass
- Max  $1.50\text{m}^2$  = 4mm Glass
- Max  $2.10\text{m}^2$  = 5mm Glass
- Max  $3.20\text{m}^2$  = 6mm Glass
- Safety glass when lower than 500mm from ground  
*Read more on AAAMSA website*
- Betcrete Safety Glass - Marked with **B①**

We also supply Obscure glass for Bathrooms

On request we can supply Double Glazing: Excellent sound, weather and energy saving ability



## TECHNICAL INFORMATION - SEALERS

PAGE 8/8



Betcrete uses a Double sealing system (Woolpile and Finseal) for the best weather & dust sealing.

## HINGES



Betcrete uses a Galvanized 4-Bar Hinge on our windows

On special request we can also supply Stainless Steel (recommended in high rust areas)

Also Friction stays (used in side hung windows or if requested)

## HANDLES & CATCHES



Betcrete uses a Special extruded Lockable Handle and Catch.

Lockable Handle for High Safety: Handle is set straight as if closed and grub screw is tightened.