

# Installing your BIBO bar

## BEFORE GETTING STARTED

Our experienced installation teams are here to make sure that your BIBO bar is correctly installed. If you are installing your own BIBO bar, then please read through all the instructions carefully, familiarising yourself with and understanding all the steps completely before beginning.

If you are at all uncertain about any of the steps, please call us on 0800 00 BIBO (2426) and ask to speak to one of our experienced technical team members.

**On average, a BIBO bar installation should take between one hour to an hour and a half.**

## CAUTIONARY NOTES

Your BIBO bar weighs 17kg, so please take care when lifting it from its box.

The hot tank switch is clearly labeled at the back of your BIBO bar (See page 4, number 8 of the digital manual).

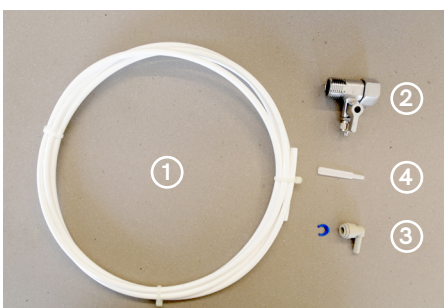
Please ensure that you do NOT turn the hot tank switch on until the BIBO bar has filled itself with water.

Switching the hot tank switch on before your BIBO bar has filled with water will require a call out from our technical team (this comes with a fee).

See page 9, point 9 of the digital manual for more details on this.

## YOUR BIBO BAR TOOLKIT

Your BIBO bar comes with a self installation kit consisting of a 3m length of 6mm white water supply pipe (1), a BIBO 1/2" "T" connector with a ball valve (2), an easy to fit right angled stem fitting (3) and a zapper key (4).



## WHERE TO PLACE YOUR BIBO bar

The BIBO bar often takes centre stage in the kitchen and fast becomes the most loved and used appliance. It is for this reason that the choice of where to place and display your BIBO bar needs to be one that offers both convenience and style.

However a few considerations need to be taken into account before choosing where to place your BIBO bar.



Your BIBO bar needs to be installed in a cool, dry place and kept away from any heat source.



Your BIBO bar needs to be well ventilated. In order to ensure this, please keep the rear of the BIBO bar a minimum of 10cm away from the wall. Don't install your BIBO bar in a cupboard or closed off space.



There will need to be a suitable mains cold water supply nearby (more often than not, this will be located under your kitchen sink or behind your dishwasher and/or washing machine).



You will need an electrical power supply. Your BIBO bar comes with a standard 3-pin (16amp) plug.

## WATER SUPPLY

The water pressure should be between 4bar (58psi) and 6bar (87psi).

Before beginning the installation, you will need to identify a mains cold water supply nearby. To identify the cold water supply, turn on the hot tap and wait for the flowing water to get hot. Feel both pipes under the sink. The one hot to the touch is the hot water supply. **WARNING:** the pipe can get extremely hot and cause burns. Please take care!

The mains cold water supply will need to be turned off before beginning the installation. Often there is an angle stop valve which will enable you to isolate the cold water pipe. If not, then it will be necessary to turn off the mains water supply to your home/office. Please identify where the tap/isolation valve is located before beginning.

Ensure that your water feed/supply is flushed out thoroughly into a bucket until clear water is visible with no sediment or dirt particles in the water.

This is to ensure your BIBO bar does not block up. Be sure to do so especially in newly renovated homes and offices.

# Installing your BIBO bar

## STEP BY STEP GUIDE FOR SELF-INSTALLATION

### A. PREPARATIONS

1. Decide where you will place your BIBO bar.
2. Carefully remove your BIBO bar from its packaging and place it in its preferred spot on the work surface.
3. Remove the plastic bag and protective covering from the cable and plug.
4. Remove the drip tray wrapping and take out the zapper 'key' from inside the drip tray (keep this somewhere safe - you'll need it down the line when replacing your zapper).
5. Remove the protective cover from the touch screen.

### B. WATER SUPPLY CONNECTION

1. Isolate the mains water supply by either turning off the angle stop valve or turning off the mains water supply to your home/office.
2. Drain as much water as possible from the pipe connected to the angle stop valve before disconnecting it. It's useful to have a cloth close by to dry up any spills.
3. Install the BIBO ½" "T" connector into the mains water supply pipe. Make sure that the BIBO ½" "T" connector is in the closed position. (Picture 1)
4. Connect the 6mm white water supply pipe to the BIBO ½" "T" connector and run it to the BIBO bar (Picture 2). You'll need to flush the water feed out completely into a bucket, until the water is clear and free from sediments or dirt particles.
5. Remove the locking clip from the inlet water fitting (blue or white in colour) at the back of your BIBO bar. (Picture 3)

6. Remove the blanking plug from the inlet water fitting, by depressing the ring. While depressing the ring, pull blanking plug out. (Picture 4)
7. Insert the right angled stem elbow (provided with your BIBO bar) into the water inlet. (Picture 5)
8. Refit the locking clip. (Picture 6)

9. Push the 6mm white water supply pipe into the elbow at the back of your BIBO bar. (Picture 7)
10. Open the ball valve on the BIBO ½" "T" connector (Picture 1)
11. Turn on the angle stop valve or your mains water supply.



### C. SETTING UP YOUR BIBO bar

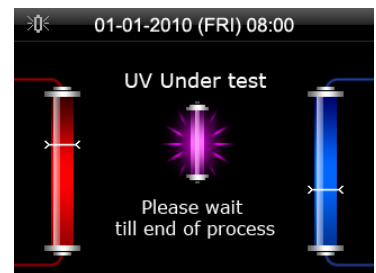
1. Plug the BIBO bar's plug into a 3 pin socket.
2. Ensure that the hot tank switch (see page 4, number 10 of the digital manual) is off at the back of your BIBO bar.
3. Turn on the power switch (see page 4, number 15 of the digital manual) at

the back of your BIBO bar. Please take caution to not confuse this with the hot tank switch.

4. Once turned on, your BIBO bar will display the BIBO logo (Image i) followed by a zapper test (Image ii); this means that your BIBO bar is operating correctly.

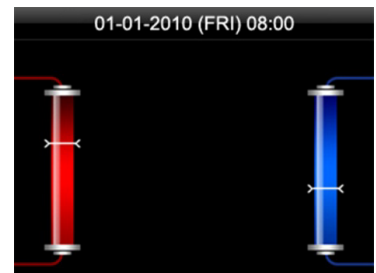


i



ii

5. Now you should see the home screen. There should be a red bar on the left of the screen and a blue bar on the right of the screen (Image iii).



iii

6. Once you see the home screen, turn on the hot tank switch at the back of the BIBO (see page 4, number 8 of the digital manual).

7. A message will appear on your screen to fill the hot water tank (Image iv).




iv

# Installing your BIBO bar

## STEP BY STEP GUIDE FOR SELF-INSTALLATION

8. Place a mug under the water outlets.  
(See page 4, number 4 of the digital manual)

9. Push the  button ONLY ONCE to start the boiling filling process.

**DO NOT PUSH ANY BUTTON INCLUDING THE RED CUP BUTTON UNTIL THIS PROCESS HAS BEEN COMPLETED.**

(If by mistake you did push a button before seeing water flow from the nozzle switch off the heating switch immediately and start from step 6 again). You will know that the boiling filling process has been completed when water starts to flow from the outlet nozzle situated under the screen. This usually takes about 1 minute from pushing the red cup button to water flow from the nozzle.


10. Once water starts flowing from the nozzle push any button to end the boiling filling setup process.

11. The hot tank will begin to heat up and the hot water temperature bar icon will be active on the screen as streaming upwards. When first used, the hot tank will take approximately 5 minutes to get up to the maximum temperature.

12. Similarly, fill the cold water tank by dispensing water from the cold water outlet (Image v).

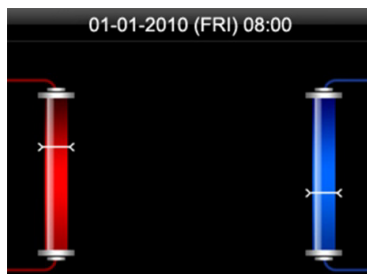


v

To do this, touch  and wait until water starts dispensing. Then touch any button to stop the water flow.

13. It is recommended that you drain 1,5 litres from the cold tank and 1,5 litres from the hot tank before drinking from your BIBO bar. This is done by simply dispensing water as per the instructions on page 20 of the digital manual for chilled and boiling hot water. Note: The BIBO bar will automatically stop dispensing once 1,5 litres has been drained.

14. Your installation is now complete and your BIBO bar will be ready to be used and enjoyed (Image vi).



vi

Please remember that if you experience any problems with your BIBO bar, do not attempt to disassemble your BIBO bar by yourself, this will invalidate your product warranty. BIBO will take no responsibility for any resulting issues. So rather keep it simple and contact us directly via email at [help@BIBO.co.za](mailto:help@BIBO.co.za) or call us on **0800 00 BIBO (2426)** - let us do all the work!