

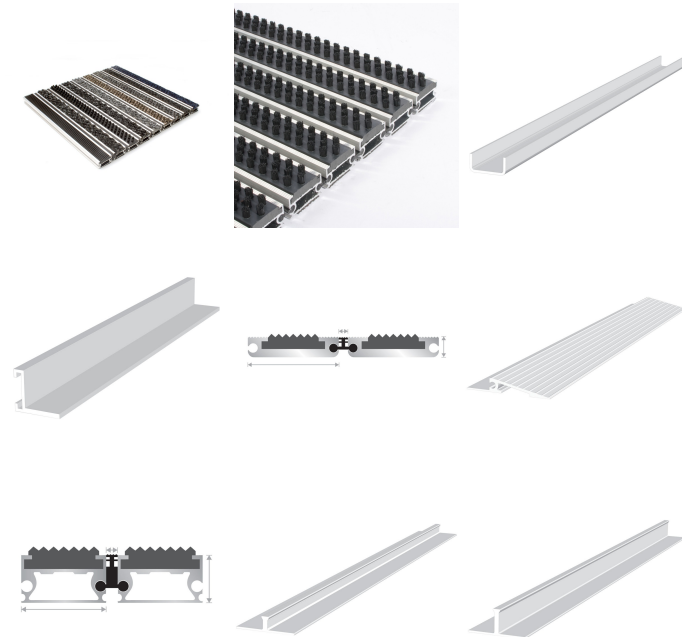


## Plan.a

Defend against dirt and moisture with versatile aluminium entrance matting



- Robust, high-quality aluminium system for heavy-duty use designed to cope with high footfall.
- Flexible, yet durable PVC linking joints for ease of handling and easy fitting.
- Custom-made to order to your specification.
- The aluminium profile is environmentally-friendly, incorporating recycled materials in the manufacture.
- Choose from one, or a combination of different surface options, including the exceptionally durable Alba which is made from ECONYL®, a recycled nylon material made from discarded fishing nets and other sources.
- Logomats can be incorporated into any Plan.a design.
- Also available with vibrant coloured polypropylene carpet inserts.
- Fire tested to BS EN 13501-1 and slip tested to BS 7676-2.
- Product Height: 10mm or 17mm



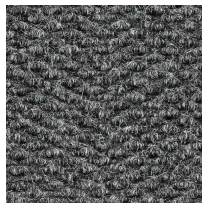
### Styles Available



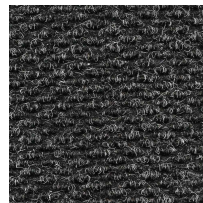
Alba Anthracite



Alba Grey



Berber Point  
Charcoal



Berber Point Turkey

## Parts

## Technical Specification

Part Number	Size	Colour	Weight
-------------	------	--------	--------

# Parts

PLANA1

Special

Various

# Technical Specification

Material	Aluminium rails, PVC connection strips, ECONYL® Regenerated Nylon, PP or PVC inlays
Surface Finish	Carpet or scrapers
Product Height	10 mm or 17 mm
Durability	Heavy to very heavy traffic entrances
Environmental Resistance	Suitable for wet and dry environments
UV Resistance	Yes
Typical Applications	Entrance areas
Installation Method	Installed in to recessed well
Other Product Performance Information	Uniform floor load = 14.36 KN/ m2. Wheel load 159 kg per wheel
Fire Tested to	Alba inserts: BS EN 13501-1 Class Cfl - s1. PVC scraper inserts: BS EN 13501-1 Class Cfl - s2.
Country of Origin	UK and SA
Notes	Alba is a tufted carpet product and therefore its appearance can vary depending on the direction of the pile and the light in the surrounding environment. To achieve a uniform appearance consider hoovering the product in a single direction.
Slip Tested to	BS 7676-2 - low slip potential