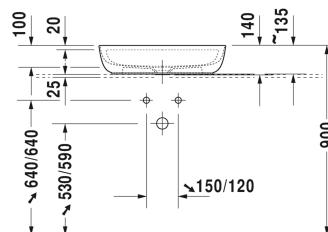
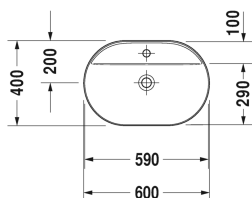


Luv Washbowl # 038060..00

| < 600 millimetre > |



Washbowl	Dimension	Weight	Order number
ground, without overflow, with tap platform, ceramic covered slotted waste included, fixings included, 600 millimetre			
Colors			
00 White Alpin 21 Sand Satin matt 23 Grey Satin matt 26 White Satin matt			
Variant			
● inner basin White, outer basin White	600 x 400 millimetre	10.300 kilogram	038060..00
Infobox			
Made from DuraCeram, * When using this siphon please observe outlet height from upper surface of finished floor to centre of outlet in accordance with the technical specification sheet			
Sanitary ceramics with the special WonderGliss surface finish will remain clean and attractive-looking for a long time to come. When ordering WonderGliss please add a "1" as eleventh digit to the model number.			
Accessory			
Design Siphon		1.500 kilogram	005036
Suitable products			
Vanity unit wall-mounted 1 pull-out compartment, countertop including one cut-out, for 1 above counter basin central, 800 x 550 millimetre	800 x 550 millimetre		KT6694
Vanity unit wall-mounted 1 pull-out compartment, countertop including one cut-out, for 1 above counter basin central, 1000 x 550 millimetre	1000 x 550 millimetre		KT6695
Vanity unit wall-mounted 1 pull-out compartment, countertop including one cut-out, for 1 above counter basin central, 1200 x 550 millimetre	1200 x 550 millimetre		KT6696
Vanity unit wall-mounted 2 pull-out compartments, 1 countertop with one cut-out or two cut-outs, for 1 or 2 above counter basins, 1400 x 550 millimetre	1400 x 550 millimetre		KT6697 B/L/R

Luv Washbowl # 038060..00

| < 600 millimetre > |

Vanity unit wall-mounted 2 drawers, upper drawer including cut-out for siphon and siphon cover, countertop including one cut-out, for 1 above counter basin central, 800 x 550 millimetre	800 x 550 millimetre	KT6654
Vanity unit wall-mounted 2 drawers, upper drawer including cut-out for siphon and siphon cover, countertop including one cut-out, for 1 above counter basin central, 1000 x 550 millimetre	1000 x 550 millimetre	KT6655
Vanity unit wall-mounted 2 drawers, upper drawer including cut-out for siphon and siphon cover, countertop including one cut-out, for 1 above counter basin central, 1200 x 550 millimetre	1200 x 550 millimetre	KT6656
Vanity unit wall-mounted 4 drawers, 1 countertop with one cut-out or two cut-outs, drawer beneath basin including cut-out for siphon and siphon cover, for 1 or 2 above counter basins, 1400 x 550 millimetre	1400 x 550 millimetre	KT6657 B/L/R
Console including drawer for vanity basin countertop including one cut-out, 1 drawer beneath console, 1 cover beneath console, 3 console supports, 1800 x 565 millimetre	1800 x 565 millimetre	DL6892 L/R
Console including drawer for wash bowls or semi-recessed washbasin 1 countertop including one central cut-out, 1 drawer beneath console, 2 console supports, 600 x 565 millimetre	600 x 565 millimetre	DL6787
Console including drawer for wash bowls or semi-recessed washbasin 1 countertop including one central cut-out, 1 drawer beneath console, 2 console supports, 800 x 565 millimetre	800 x 565 millimetre	DL6788
Console including drawer for wash bowls or semi-recessed washbasin 1 countertop including one central cut-out, 1 drawer beneath console, 2 console supports, 1000 x 565 millimetre	1000 x 565 millimetre	DL6789
Console including drawer for wash bowls or semi-recessed washbasin 1 countertop including one central cut-out, 1 drawer beneath console, 3 console supports, 1200 x 565 millimetre	1200 x 565 millimetre	DL6790
Console including drawer for wash bowls or semi-recessed washbasin countertop including one cut-out, 2 drawers beneath console, 3 console supports, 1500 x 565 millimetre	1500 x 565 millimetre	DL6791 L/R
Console including drawer for wash bowls or semi-recessed washbasin countertop including one cut-out, 2 drawers beneath console, 3 console supports, 1800 x 565 millimetre	1800 x 565 millimetre	DL6792 L/R
Vanity unit for console 2 drawers, upper drawer including cut-out for siphon and siphon cover, 800 x 565 millimetre	800 x 565 millimetre	DL6799
Vanity unit for console 1 pull-out compartment, compartment consists of glass dividers and 2 boxes (small/large), 600 x 478 millimetre	600 x 478 millimetre	XL6500
Vanity unit for console 1 pull-out compartment, compartment consists of glass dividers and 2 boxes (small/large), 800 x 478 millimetre	800 x 478 millimetre	XL6501
Vanity unit for console 1 pull-out compartment, compartment consists of glass dividers and 2 boxes (small/large), 1000 x 478 millimetre	1000 x 478 millimetre	XL6502
Vanity unit for console 2 drawers, upper drawer including cut-out for siphon and siphon cover, 600 x 478 millimetre	600 x 478 millimetre	XL6510
Vanity unit for console 2 drawers, upper drawer including cut-out for siphon and siphon cover, 800 x 478 millimetre	800 x 478 millimetre	XL6511

Luv Washbowl # 038060..00

| < 600 millimetre > |

Vanity unit for console 2 drawers, upper drawer including cut-out for siphon and siphon cover, 1000 x 478 millimetre	1000 x 478 millimetre	XL6512
Vanity unit for console 1 pull-out compartment, compartment consists of glass dividers and 2 boxes (small/large), 600 x 548 millimetre	600 x 548 millimetre	XL6719
Vanity unit for console 1 pull-out compartment, compartment consists of glass dividers and 2 boxes (small/large), 800 x 548 millimetre	800 x 548 millimetre	XL6713
Vanity unit for console 1 pull-out compartment, compartment consists of glass dividers and 2 boxes (small/large), 1000 x 548 millimetre	1000 x 548 millimetre	XL6715
Vanity unit for console 2 drawers, upper drawer including cut-out for siphon and siphon cover, 600 x 548 millimetre	600 x 548 millimetre	XL6717
Vanity unit for console 2 drawers, upper drawer including cut-out for siphon and siphon cover, 800 x 548 millimetre	800 x 548 millimetre	XL6714
Vanity unit for console 2 drawers, upper drawer including cut-out for siphon and siphon cover, 1000 x 548 millimetre	1000 x 548 millimetre	XL6716
Vanity unit for console 1 opened compartment including glass shelf, 800 x 548 millimetre	800 x 548 millimetre	XL6718
Vanity unit for console 2 drawers, upper drawer including cut-out for siphon and siphon cover, 600 x 478 millimetre	600 x 478 millimetre	H26310
Vanity unit for console 2 drawers, upper drawer including cut-out for siphon and siphon cover, 800 x 478 millimetre	800 x 478 millimetre	H26311
Vanity unit for console 2 drawers, upper drawer including cut-out for siphon and siphon cover, 1000 x 478 millimetre	1000 x 478 millimetre	H26312
Vanity unit for console 2 drawers, upper drawer including cut-out for siphon and siphon cover, 800 x 548 millimetre	800 x 548 millimetre	H26301
Vanity unit for console 2 drawers, upper drawer including cut-out for siphon and siphon cover, 600 x 548 millimetre	600 x 548 millimetre	H26300
Vanity unit for console 2 drawers, upper drawer including cut-out for siphon and siphon cover, 1000 x 548 millimetre	1000 x 548 millimetre	H26302
Vanity unit for console 1 opened compartment including towel rail, 600 x 518 millimetre	600 x 518 millimetre	VE6540
Vanity unit for console 1 opened compartment including towel rail, 800 x 518 millimetre	800 x 518 millimetre	VE6541
Vanity unit for console 1 opened compartment including towel rail, 1000 x 518 millimetre	1000 x 518 millimetre	VE6542
Vanity unit for console 2 drawers, upper drawer including cut-out for siphon and siphon cover, 1000 x 565 millimetre	1000 x 565 millimetre	DL6798
Vanity unit for console 1 pull-out compartment, 520 x 477 millimetre	520 x 477 millimetre	LC6810
Vanity unit for console 1 pull-out compartment, 620 x 477 millimetre	620 x 477 millimetre	LC6811
Vanity unit for console 1 pull-out compartment, 820 x 477 millimetre	820 x 477 millimetre	LC6812
Vanity unit for console 1 pull-out compartment, 1020 x 477 millimetre	1020 x 477 millimetre	LC6813

Vanity unit for console with 2 drawers, upper drawer including cut-out for siphon and siphon cover, 520 x 477 millimetre	520 x 477 millimetre	LC6820
Vanity unit for console with 2 drawers, upper drawer including cut-out for siphon and siphon cover, 620 x 477 millimetre	620 x 477 millimetre	LC6821
Vanity unit for console with 2 drawers, upper drawer including cut-out for siphon and siphon cover, 820 x 477 millimetre	820 x 477 millimetre	LC6822
Vanity unit for console with 2 drawers, upper drawer including cut-out for siphon and siphon cover, 1020 x 477 millimetre	1020 x 477 millimetre	LC6823
Vanity unit for console 1 pull-out compartment, 520 x 547 millimetre	520 x 547 millimetre	LC6826
Vanity unit for console 1 pull-out compartment, 620 x 547 millimetre	620 x 547 millimetre	LC6827
Vanity unit for console 1 pull-out compartment, 820 x 547 millimetre	820 x 547 millimetre	LC6828
Vanity unit for console 1 pull-out compartment, 1020 x 547 millimetre	1020 x 547 millimetre	LC6829
Vanity unit for console with 2 drawers, upper drawer including cut-out for siphon and siphon cover, 520 x 547 millimetre	520 x 547 millimetre	LC6836
Vanity unit for console with 2 drawers, upper drawer including cut-out for siphon and siphon cover, 620 x 547 millimetre	620 x 547 millimetre	LC6837
Vanity unit for console with 2 drawers, upper drawer including cut-out for siphon and siphon cover, 820 x 547 millimetre	820 x 547 millimetre	LC6838
Vanity unit for console with 2 drawers, upper drawer including cut-out for siphon and siphon cover, 1020 x 547 millimetre	1020 x 547 millimetre	LC6839

All drawings contain the necessary measurements which are subject to standard tolerances. They are stated in mm and are non-binding. Exact measurements, in particular for customised installation scenarios, can only be taken from the finished ceramic piece.