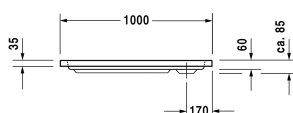
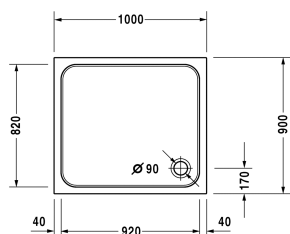


Shower tray # 720107000000000 / 720107000000001

| < 1000 mm > |



Shower tray	Dimension	Weight	Order number
rectangle, 3,2 mm sanitary acrylic			
<b>Colors</b>			
00 White Alpin			
<b>Variant</b>			
Shower tray	1000 x 900 mm	14,500 kg	720107000000000
Shower tray with Antislip	1000 x 900 mm	14,500 kg	720107000000001
<b>Accessory for shower trays</b>			
Bathtub anchors for mounting and support of D-code bathtubs and shower trays, 3 pieces			790125
Rubber profile for D-Code, for noise reduction and sealing against moisture, length: 3300 mm			790126
Support frame for shower trays with length $\leq$ 1000 mm			790129
Outlet drain for D-Code shower trays, chrome, Drain flow rate: 0,78 l/s (according to DIN EN 274), outlet diameter 90 mm			791217
Support for shower tray for # 720107			790484
Noise reduction set for acrylic shower trays Contents: noise reduction shower tray anchors, noise protection shower tray feet, bitumen pads, rubber profile # 790104			791369

All drawings contain the necessary measurements which are subject to standard tolerances. They are stated in mm and are non-binding. Exact measurements, in particular for customised installation scenarios, can only be taken from the finished ceramic piece.