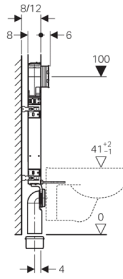
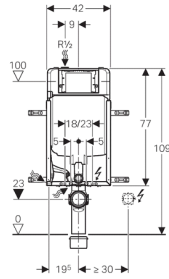
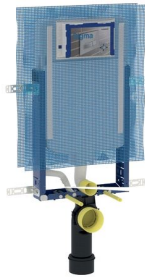


Geberit Kombifix element for wall-hung WC, 109 cm, with Sigma concealed cistern 8 cm

NEW


Application purposes

- For masonry walls
- For installation in part- or room-height prewall installations
- For wall-hung WCs with connection dimensions in accordance with EN 33:2011
- For single flush, dual flush or stop-and-go flush

Characteristics

- Series 2016
- Mounting frame, powder-coated, with four fixing brackets
- Direct plastering netting, pre-mounted
- Fastening for connection bend can be mounted from front
- Concealed cistern with front actuation, fully insulated against condensation
- Immediate post flush possible with factory setting
- Tool-free installation and maintenance work on concealed cistern
- Water supply connection at the top, offset to left side
- Protection box for service opening can be cut to length, suitable for surface-even actuator plates
- Equipped with conduit pipe for feed pipe for connection of Geberit AquaClean shower toilets

Technical data

Flow pressure	0.1-10 bar
Flush volume, factory setting	6 and 3 l
Flush volume large, adjustment range	4.5 / 6 / 7.5 l
Flush volume small, adjustment range	3-4 l

Scope of delivery

- Water supply connection R 1/2, compatible with MeplaFix, with integrated angle stop valve and hand wheel
- Protection box for service opening
- Connection set for WC, \varnothing 90 mm
- Connection bend 90° made of PE-HD, \varnothing 90 mm
- Adapter socket made of PE-HD, \varnothing 90 / 110 mm
- 2 protection plugs
- 2 threaded rods M12
- Fastening material

Article
Art. no.
110.792.00.1

- Actuator plate has to be ordered separately
- Available as of April 2016