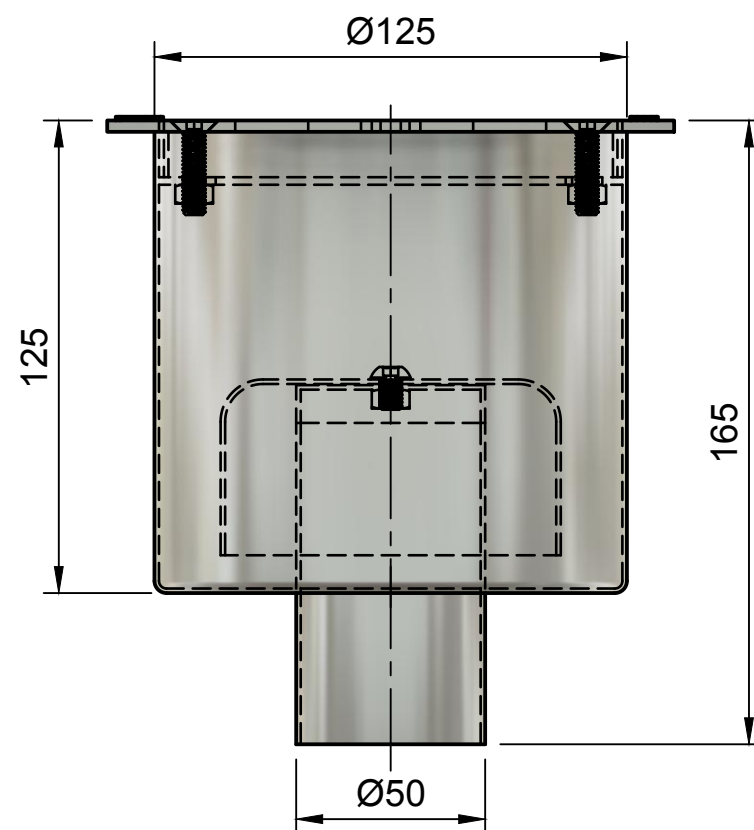


1 2 3 4 5 6 7 8

A



Side View

Scale 1:2

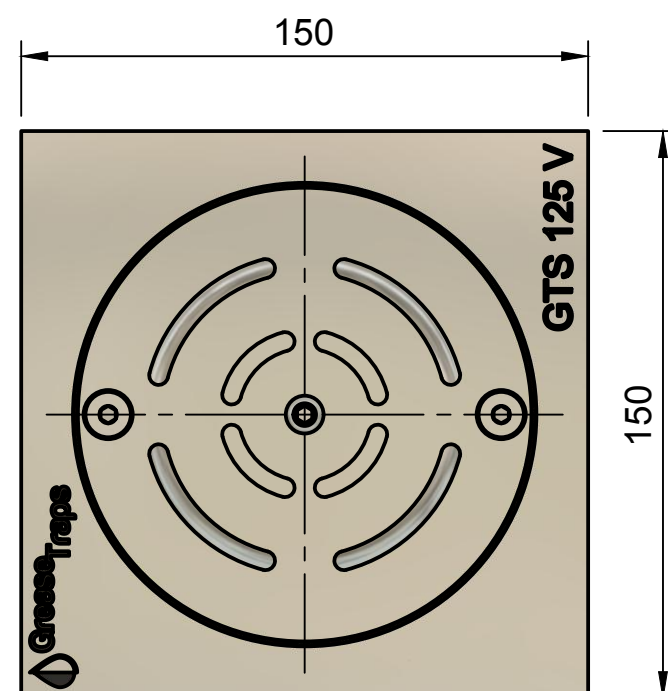
B

C

D

E

F



Top View

Scale 1:2

1 2 3 4 5 6 7 8

GTS 125 V Floor Drain

Unique full flow floor trap with the following features

- Manufactured from stainless steel 304 to ensure acid corrosion and stain resistance.
- A single water seal to ensure odour-free operation.
- Smooth surfaces for easy cleaning, minimum dirt collection and high flow rates.
- The discharge pipe is fully accessible once the drain has been dismantled.
- Top flange type: round (for epoxy floors) or square (for tiled floors)
- Top cover plate type: Slots/holes - as requested
- Flow rete 0.8 l/s
- Load capacity 400kg
- Outlet position bottom vertical
- Outlet pipe outside diameter 50mm

Typical applications: public toilets, office blocks kitchenette, laundries etc.

Note floor finish to be specified

A

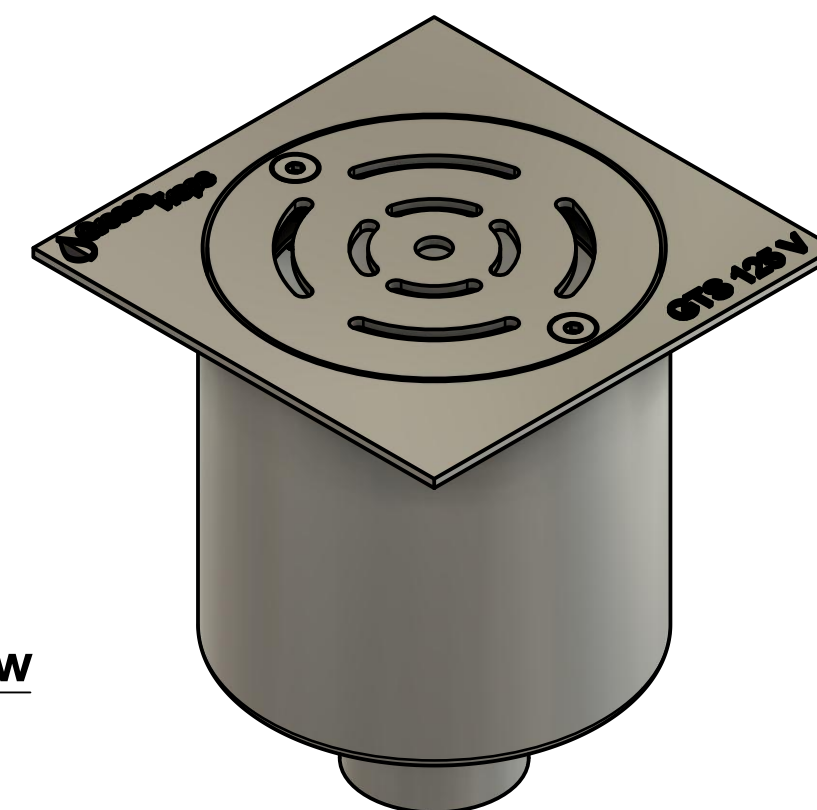
B

C

D

E

F



ISO View

Scale 1:2

Dept. KZN	Technical reference H Vorster	Created by W Louw	2017/12/06	Approved by H Vorster	2017/12/06
		Document type General Arrangement	Document status Approved		
		Title GTS 125 V www.greasetraps.co.za JHB KZN CPT	DWG No. GA-1000		
		Rev. A	Date of issue 2017/12/06	Sheet 1/1	