

## CP 611A Pressure exerting intumescent sealant

### Product description

A graphite based intumescent firestop sealant that helps to protect combustible and non combustible for up to 4hrs fire rating.

### Areas of application

- Permanent sealing of single and bunched cables (4 hrs integrity).
  - Sealing around flammable pipes.
  - Resealing penetrations formerly sealed with mortar.
  - Tested with PVC, PP, PE, HDPE and ABS.
  - Sealing plastic pipes up to 50mm (3 hrs integrity).
- Tested regarding NES 711 and 712 and BS 476: Part 20.  
(Tests and approvals available up to 100mm).

### Product features

- Expands in fire, protecting pipe and cable penetrations
- Smoke, gas and water tight
- Halogen and solvent free
- Odourless

### Base materials

Concrete : Masonry

Porous concrete : Drywall

Can be used in round penetrations up to 200mm

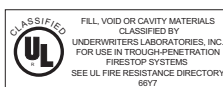
Can be used in square penetrations up to 300mm



### System advantages/customer benefits

- Easy to work with
- Wide range of applications
- Paintable
- Quick sealing of remaining gaps
- Particularly suitable for laying new cables
- Can be used for outdoor applications
- Expansion pressure up to 7 Bar

### Approvals Internationally tested and approved

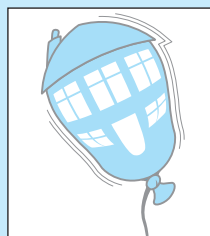


### Recommendations

- Can be used in conjunction with a suitable backing material:
  - Non flammable mineral wool (min. 100kg/m³).
  - Or Hilti CF125-50 fire rated foam.

### Storage

- Store only in the original packaging in a location protected from moisture at a temperature of 5°C to 30°C.
- Observe expiry date on top of cartridge.

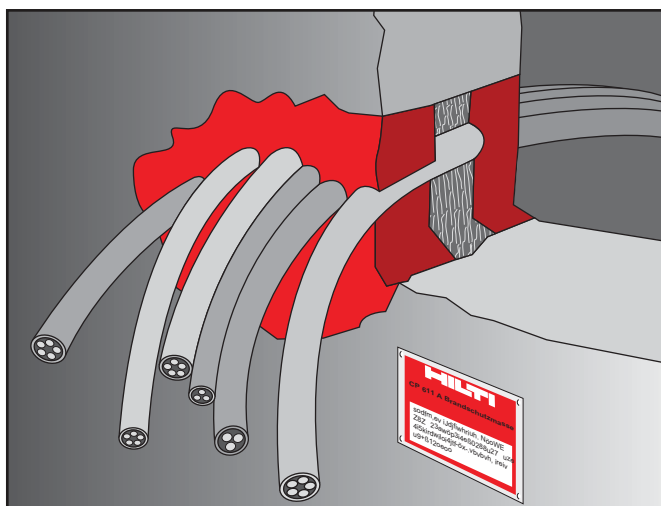


Air Sealing and Acoustic data available for this product

## CP 611A pressure exerting firestop mastic 310 ml cartridge



	Packing contents (pcs)	Ordering designation	Item no.
Pressure exerting firestop mastic	20	CP 611A	220351
Manual dispenser	1	CB 200-P1	55205



## CP 611A

### Pressure exerting intumescent sealant

#### Technical data

##### CP 611A intumescent firestop mastic

(at 23°C and 50% relative air humidity)

Density:	approx. 1.3 g/cm <sup>3</sup>
Colour:	Grey
Application temperature:	+5°C to +40°C
Temperature resistance:	-40°C to +140°C
Skin-forming time:	approx. 10 min.
Curing rate:	3 mm in 3 days
Intumescent phase:	from +140°C to +180°C
Movement acceptance:	10%
Material class as per DIN 4102, T.1:	B2 (Fire reaction)
Shelf-life after production:	12 months (at 20°C in a dry place)
Cartridge contents:	310 ml

#### Opening

- Clean the opening
- Cables and cable supporting structures must be installed in compliance with local building and electrical standards.

#### Application of firestop mastic

##### a) Mineral wool packing

- Pack in non-flammable mineral wool as backfill around cables. CF 125-50 fire rated polyurethane foam can also be used.
- Leave minimum 40 mm free at each side of opening.

##### b) Application of firestop mastic

- Build up CP 611A in the remaining opening layer by layer using the CB 200-P1 manual dispenser. Always make sure the applied thickness is minimum 40 mm.
- Tightly fill gaps and spaces between cables.

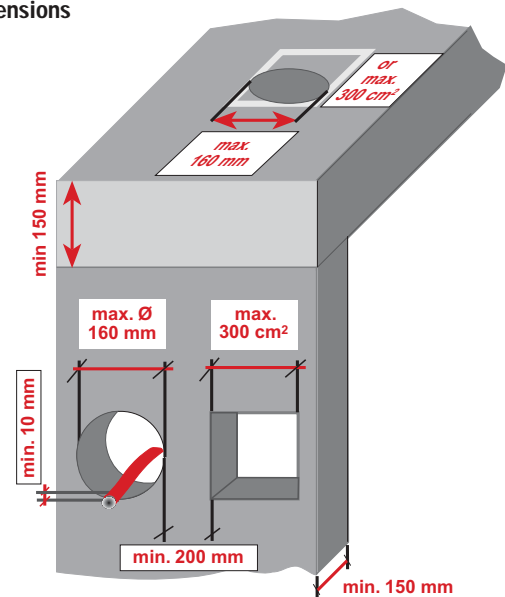
##### c) Smoothing of firestop mastic

- Smooth CP 611A before the skin forms using water and a spatula/possibly a paint brush. The completed seal should be left undisturbed for 48 hours.

#### Safety precautions

- Please refer to MSDS data sheet available as a download from the Technical Library on the Hilti web site at [www.hilti.co.uk](http://www.hilti.co.uk)

#### Dimensions

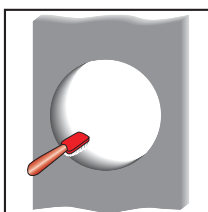


The following dimensions must be observed when applying CP 611A intumescent firestop mastic.

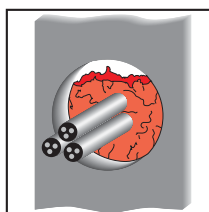
		Wall seal	Floor seal
Max. opening size	Diameter	160 mm	160 mm
	Area	300 cm <sup>2</sup>	300 cm <sup>2</sup>
Min. distance from cables to edge of opening		10 mm	10 mm
Min. distance to next opening		200 mm	200 mm
Annular space around:			
- Singles cables		min. 20 mm	min. 20 mm
- Bunched cables/inflammables pipes (Ø ≤ 50 mm)		min. 25 mm	min. 25 mm
Compacted depth of non-flammable mineral wool (melting temp. >1000°C)		≥ 50 mm	≥ 50 mm
Application thickness of CP 611 A		40 mm both sides	40 mm soffit only
Max. cable loading (as % of opening size)		60 %	60 %

For more detailed Consumption Information refer to the Consumption Guide on pages 37-38

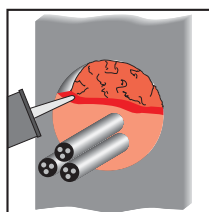
#### Installation instructions for CP 611A



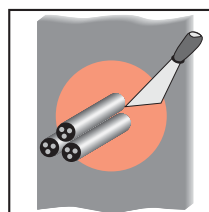
Clean opening



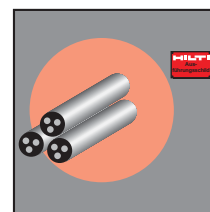
Depending on required integrity, pack in mineral wool or CF 125-50 Pu foam.



Apply CP 611A



Smooth CP 611A



Fasten installation plate in place (if required)

The above applications are not exhaustive.  
For further details please use any of the contacts listed below.