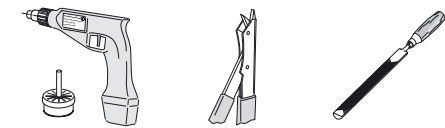
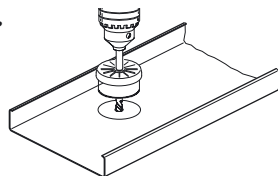


6

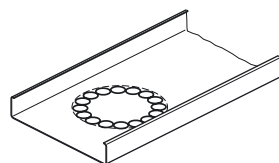
Cut-outs



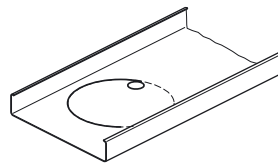
A.



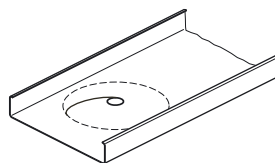
B.



B1



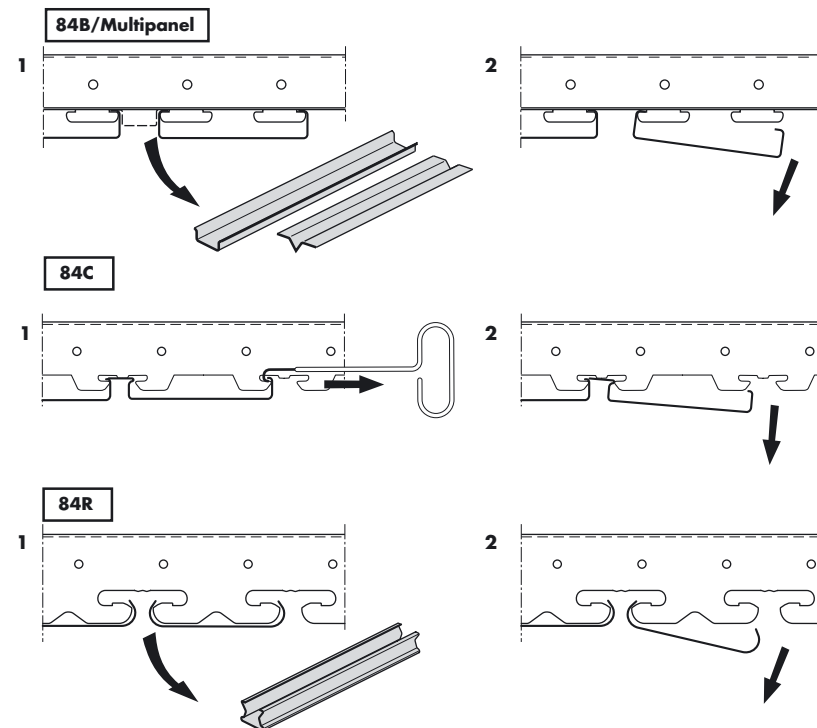
B2



B3

7

Demounting



While demounting the panel make sure to support the part of the panel that has already been removed from the carriers.



Maintenance

Luxalon® Ceilings are, by utilising high quality materials and extensively tested coatings, easy to maintain. When cleaning is required, it is advised to use a slightly damp, non-linting and non-abrasive cloth. A mild neutral (pH=7) cleaning agent may be used if necessary. Never use aggressive cleaning agents since they will cause damage to the panels. Before cleaning the ceiling always try the chosen method of cleaning on a non-visible part of the panel.

Ventilation

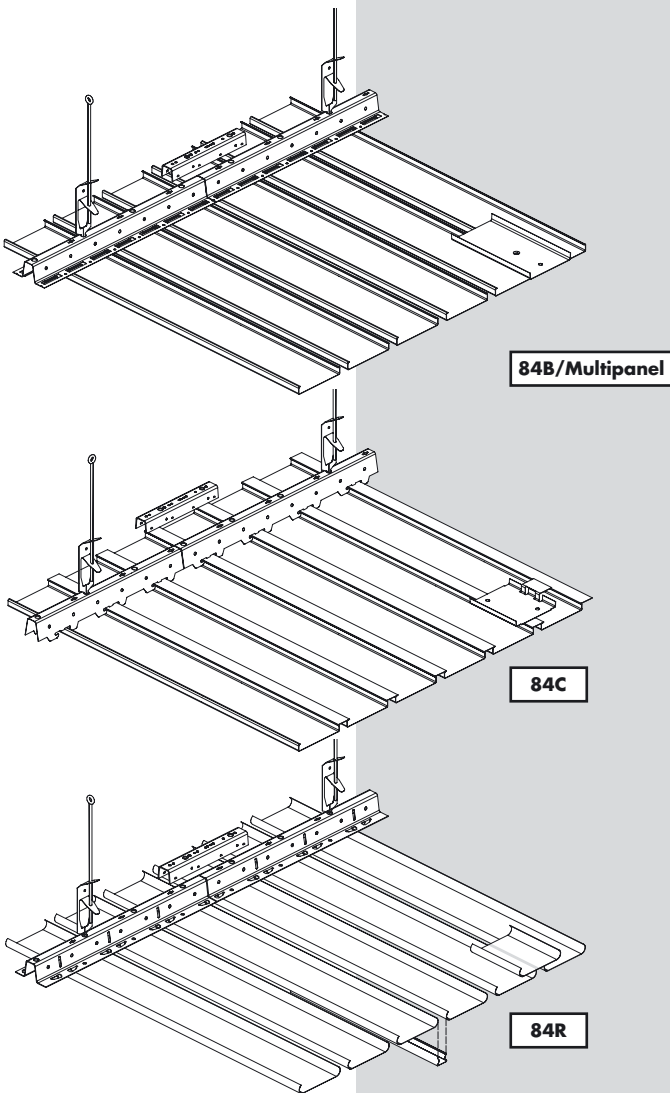
When using a Luxalon® Ceiling in rooms with higher humidity levels it is important always to use aluminium panels and carriers and to ensure that the rooms are ventilated properly.



www.hunterdouglascontract.com



Luxalon® Linear ceiling 84B-84C-84R-Multipanel



We have endeavoured to design these instructions to assist a trained ceiling professional with the mounting and installation of a Luxalon® ceiling. We accept no responsibility for poor workmanship, failure to comply with these instructions, improper installation or installation by someone other than a trained ceiling professional.

revision 1

HunterDouglas

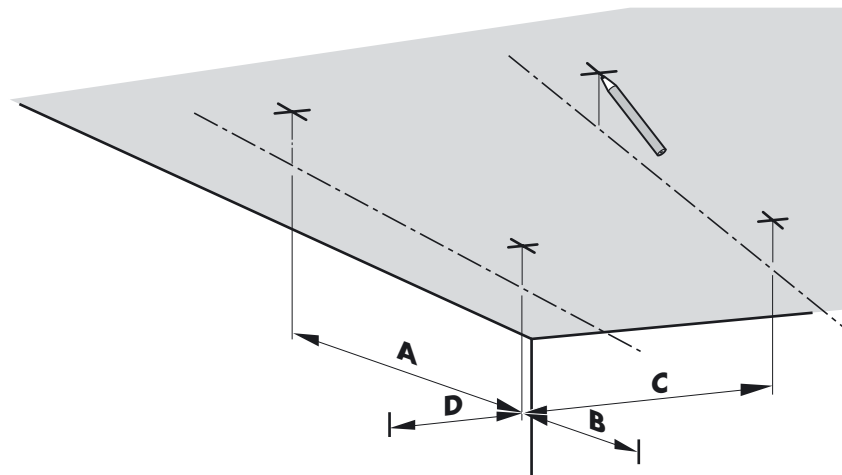
WINDOW COVERINGS | CEILINGS | SUN CONTROL | FAÇADES

HunterDouglas

CEILINGS

1

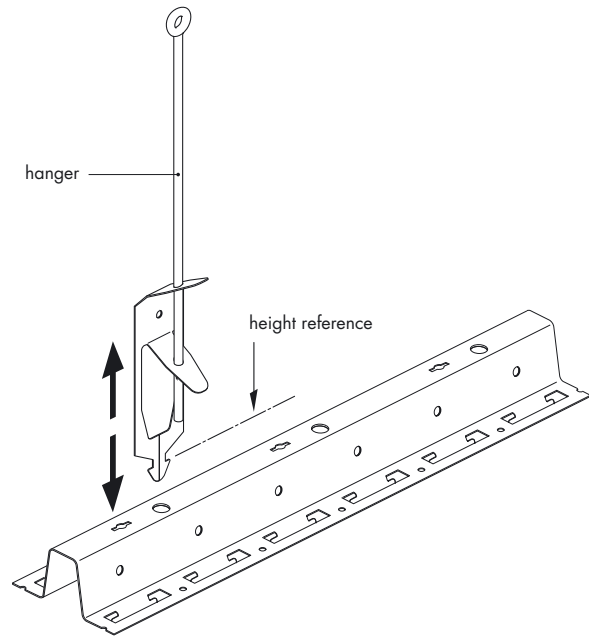
Marking suspension points



Panel type	Max. carrier span		Max. panel span	
	A	B	C 2 fixings / 3 or > fixings	D
84B	1700	300	1450/1660	150
84C	1300	300	1600/1800	150
84R	1700	300	1500/1700	150
Multipanel	30BD	1700	2500/2500	150
	30/80B	1700	1550/1850	150
	130B	1700	1450/1550	150
	180B	1700	1350/1450	150

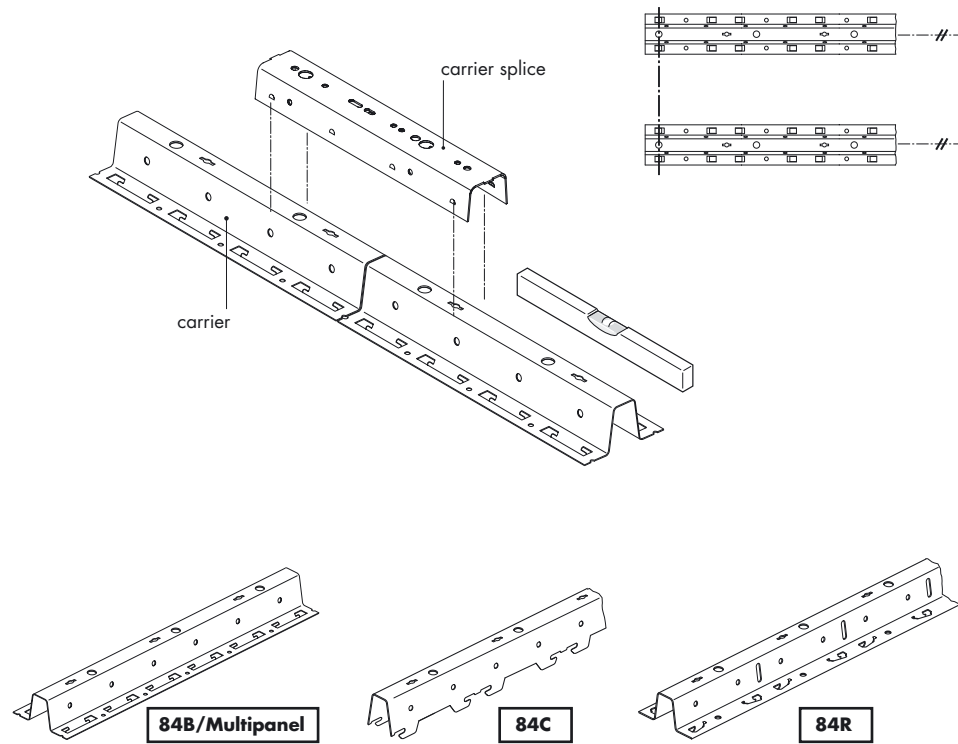
2

Installing the hangers



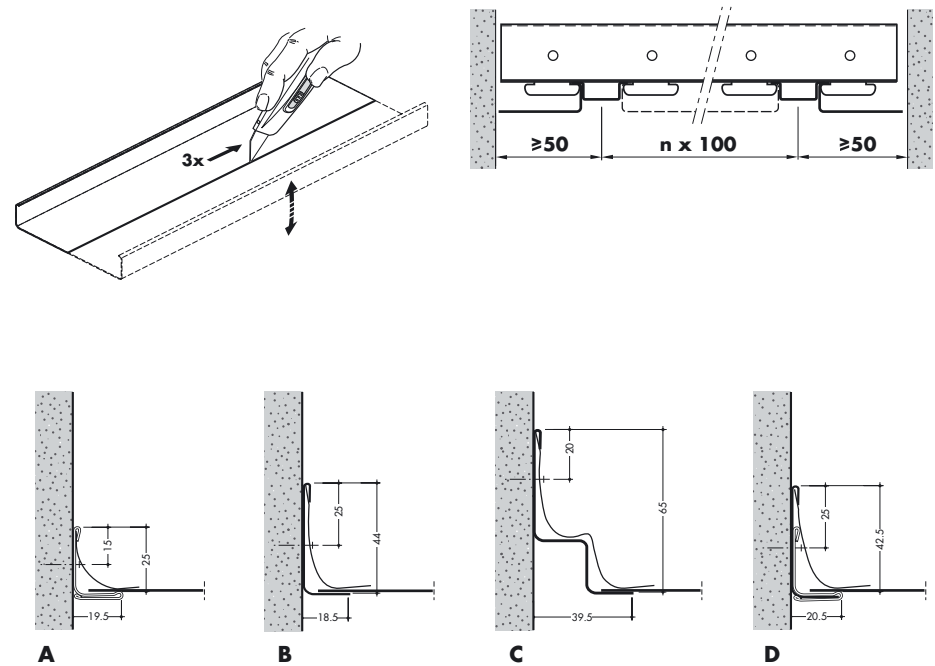
3

Installing the carriers



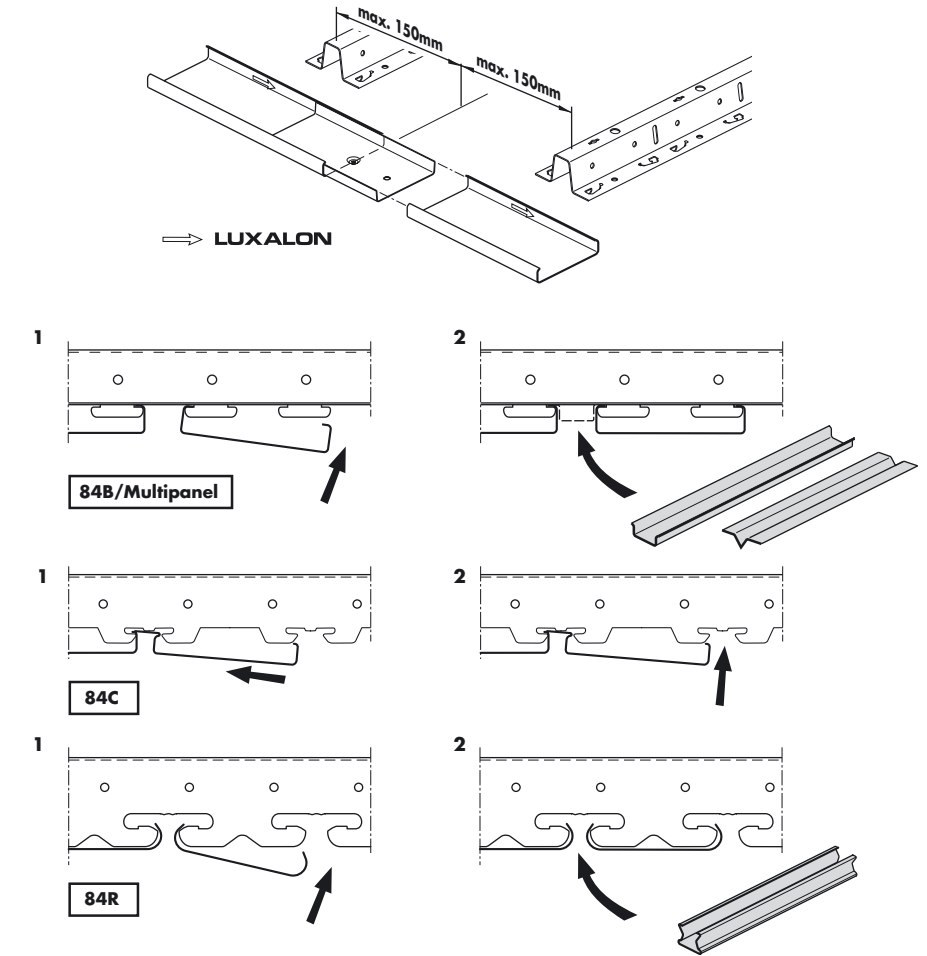
4

Installing the adaptor panels



5

Installing the panels



ATTENTION!

To avoid fingerprints and damages, always wear (white) cotton **gloves** when handling the panels.

- Make sure that:
- Cut-outs in the panels for spots and other installations are made before installing the panels.
 - The directional arrows on the backside of the panels always point in the same direction.