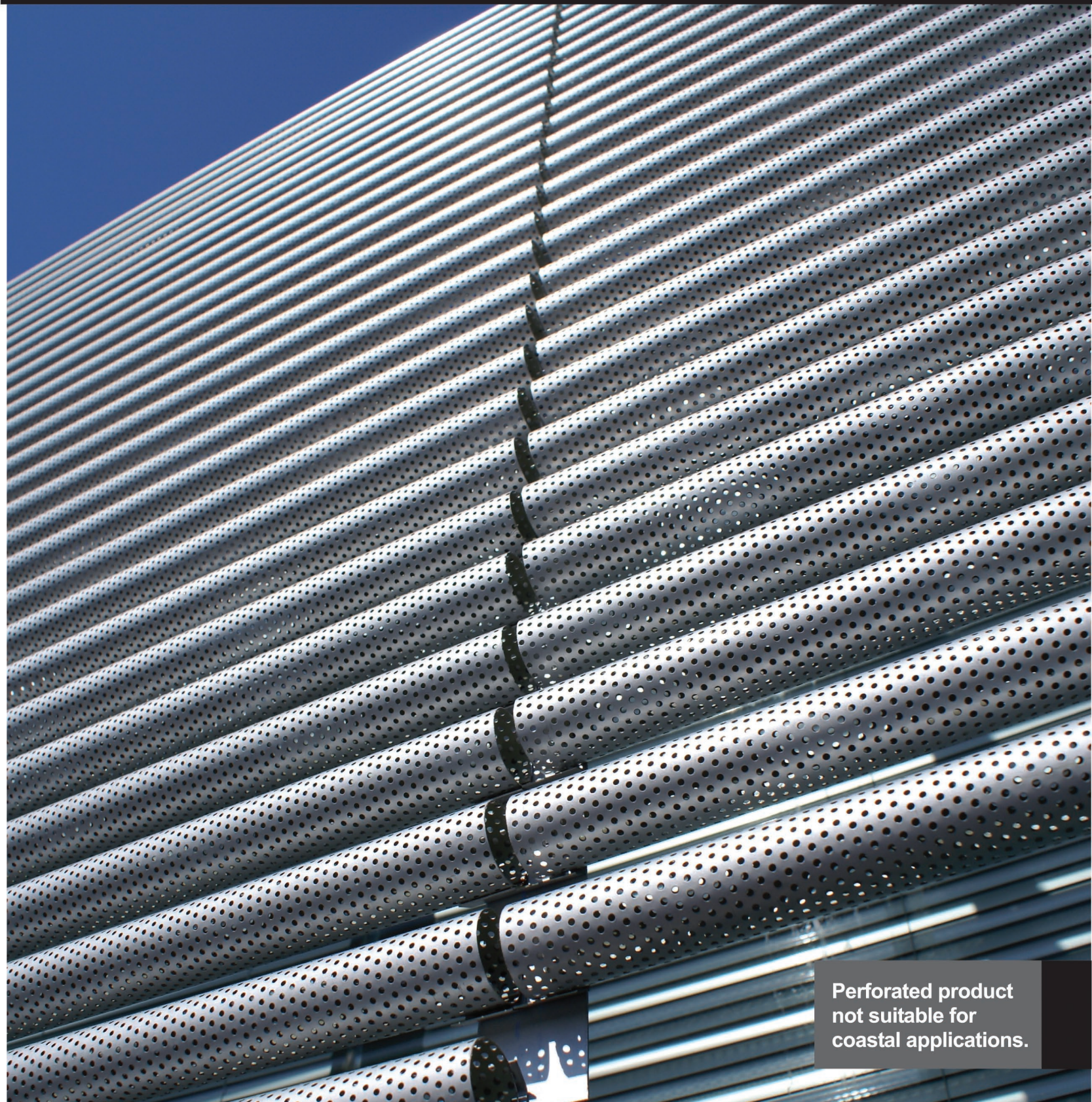


**TUBRISE**

**SUNLOUVRE**



Perforated product  
not suitable for  
coastal applications.

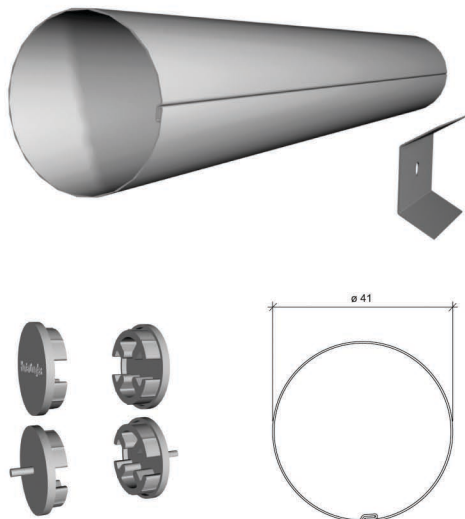


[www.hunterdouglas.co.za](http://www.hunterdouglas.co.za)

**HunterDouglas®**

SOLAR CONTROL





TECHNICAL DESCRIPTION

Product	Material	Thickness (mm)	Weight (kg/ml)	Length max. (mts)
Tubrise	Aluminium	0,5	0,32	6

- Colours: Standard colour is Natural Anodised.  
Special colours upon request.
- Finish: Perforated or solid
- Uses: Sunlouvres and sunshields
- Modules: Spacing of tubes is variable

CHARACTERISTICS

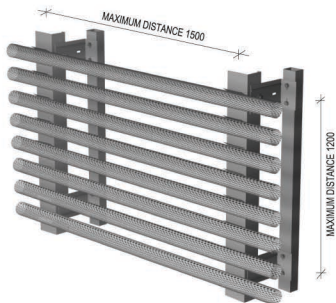
- **Tubrise** Sunlouvre made of aluminium tubular panels with variable spacing according to project requirements.
- It is a special architectural element for both sun control and aesthetic in building façades and other related applications.
- The **Tubrise** sunlouvre can be fitted in either horizontal or vertical application.
- **Tubrise** allows for a quick and easy installation.
- The **Tubrise** Sunlouvre can be requested with plain or drilled #103 or micro drilled finish.
- It permits the option of placing covers at the ends of the tubular panels.

ASSEMBLY

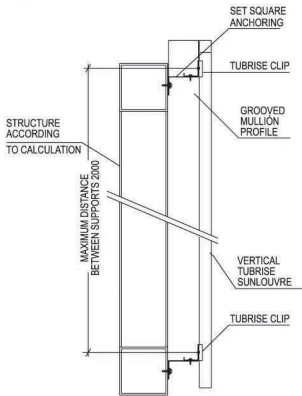
The **Tubrise** sunlouvre is installed to a substructure with a variable spacing, according to the project requirements. The panel is supported by clips which are in turn fixed mechanically to the support structure.

**Note:** Components of the product of this brochure are in permanent development and innovation. Could be subjected to modifications. Measures are in millimeters (mm.).

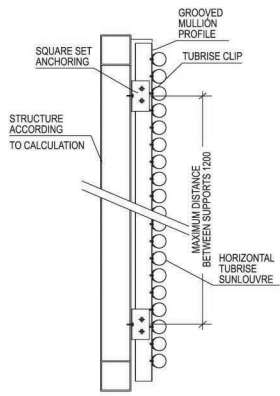
INSTALLATION



VERTICAL TUBRISE



HORIZONTAL TUBRISE



CORNER TUBRISE

