

# 8 REASONS

## To Use Lambdaboard® Insulation



HOME • BUILDING • REFRIGERATION • INDUSTRIAL

# INSULATING WITH LAMBDABOARD®

## GENERAL:

LAMBDABOARD® is a flexible faced Polyisocyanurate (PIR) insulation board made on a continuous laminator. The polyisocyanurate cored insulation uses a hydrocarbon-based blowing agent which has zero Ozone Depletion Potential (ODP) and complies with Kyoto Protocol regarding Global Warming Potential (GWP). LAMBDABOARD® insulation is the answer to HCFC and HFC free insulation.

- Recyclable.
- Environmental "green" choice.
- Highest stable R-value per 25mm of thickness.
- Moisture resistant, water repellent.
- Resistant to solvents used in construction adhesives.
- Excellent dimensional stability.
- Superior performance in fire tests.
- Service temperature range from -30°C to 140°C.
- Thermoset material does not soften or melt.
- High compressive strength.

## TAKE CONTROL OF YOUR ENERGY COSTS

In a bid to remain faithful to its mantra, "Take control of your energy costs", Rigidfoam recently renewed its commitment to the supply of insulation capable of reducing operational heating and cooling costs resulting in positive environmental and climate change consequences. Its launch product, LAMBDABOARD®, is a unique solution to the current energy crisis.



## SPECIFICATIONS

### Facing:

Matt mineral coated fibre glass tissue,\* aluminium scrim reinforced, bitumised kraft, kraft paper

### Density:

Minimum of 34kg/m<sup>3</sup> foam core, overall 40kg/m<sup>3</sup>

### Thermal Conductivity:

0.024(W/m.K) @22°C mean temperature, aged

### Dimensions:

Thickness : 20mm to 150mm increments of 5mm, ±1.5mm.

Width : 1220mm, ±2.5mm

Length : cut to size, ±5mm

### Temperature range:

- 30°C to 140°C

### Closed cell content:

> 95%

### Fire Properties:

\*SANS 428, B/B1/2/H&V – ASIB approved, report number FTC14/120. FTC09-140 and FTC08-105

### Toxicity:

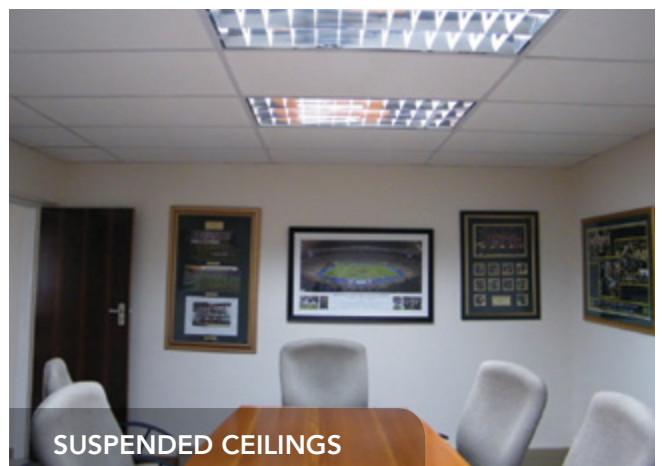
Can be used in confined areas, as tested in accordance to NES 713

### Moisture absorption:

< 3% as tested in accordance with SABS 1381-1



Lambdaboard® is a unique solution to the current energy crisis

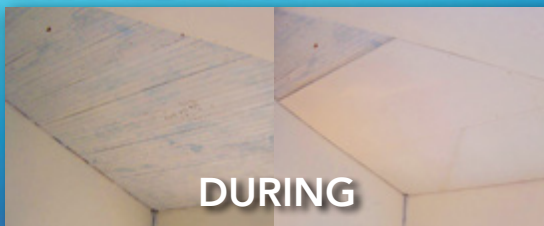




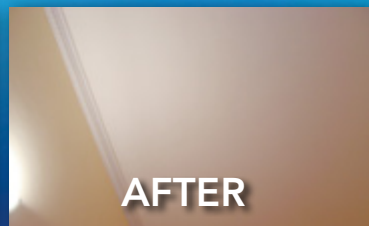
## SEAMLESS CEILING INSTALLATION



BEFORE



DURING



AFTER

### R-VALUE PERFORMANCE

LAMBDABOARD® has the highest R-value per 25mm thickness, therefore the design U-value of the insulation system can be achieved with a minimum thickness. This in turn allows the overall footprint of the building to decrease and reduces the cost of construction.

LAMBDABOARD®	
Thickness (mm)	R Value (m².K/W)
20	0.83
25	1.04
30	1.25
40	1.67
50	2.08
60	2.50
80	3.33
100	4.17



Lambdaboard® has a stable R-value

### SPANNING CAPABILITY BASED ON 3 PURLIN SPACING'S WITH NO LONGITUDINAL SUPPORT 1220MM WIDE:

- 25mm maximum 1800mm
- 30mm maximum 2000mm
- 40mm maximum 2300mm
- >50mm Maximum 2000mm



Lambdaboard® is a product that is renowned for its unmatched insulating supremacy

### THERE ARE NUMEROUS WAYS TO INSTALL LAMBDABOARD®:

- Over purlin
- Vertical cladding
- Under screed
- Cavity wall
- Curtain wall / Spandrel Panel
- Ceilings
- Under soffit
- Ducting

### DISAVOWAL:

The information set forth herein is furnished free of charge and is based on technical data that RIGIFOAM believes to be reliable. It is intended for use by persons having technical skill and at their own discretion and risk. Since some conditions of use are outside our control, we make no warranties, expressed or implied, and assume no liabilities in connection with any use of this information. Nothing herein is to be taken as a license to operate under or a recommendation to infringe any patent.



UNDER PURLIN



CAVITY WALL



UNDER SCREED

Leading the way in environmentally friendly insulation systems for  
appliance, building and refrigeration applications.



moisture and wind resistant



thermoset, does not melt,  
drip or spread flame



environmentally friendly  
& recyclable



high compressive strength



aesthetically pleasing



reduces energy usage  
in a building



superior long term  
R-value



the right choice for  
intelligent organs

[www.lambdaboard.co.za](http://www.lambdaboard.co.za) / [www.rigifoam.co.za](http://www.rigifoam.co.za)

**CAPE TOWN:**

Youngman's Roofing and  
Sheet Metal Works  
Tel: +27 (0)21 511 8125  
Fax: +27 (0)86 242 8147  
E-mail: carol@rigifoam.com  
Email : info@youngman.co.za  
26 Berkley Road, Maitland  
Cape Town, 7405

**PORT ELIZABETH:**

Tel: +27 (0)41 453 0277  
Fax: +27 (0)86 532 5702  
E-mail: ronnie@rigifoam.com  
4 Bedford Road,  
Neave Industrial.

**JOHANNESBURG:**

Tel: +27 (0)11 421 0313  
Fax: +27 (0)11 421 0410  
E-mail: duncan@rigifoam.com  
3 Detroit Street,  
Apex, Benoni.

**KWA-ZULU NATAL:**

Tel: +27 (0)31 700 5250  
Fax: +27 (0)31 700 4924  
E-mail: tristan@rigifoam.com  
Unit G Pine Mead Industrial  
Park, 47 Gillitts Road,  
Westmead.

Sketch7620/2015



- Environmentally friendly
- Less carbon emissions
- Controlled temperature environment
- Savings on energy costs
- Long term insulation properties

HOME • BUILDING • REFRIGERATION • INDUSTRIAL