

M.FLOORS SPECIFICATIONS AND INSTALLATION

Click System

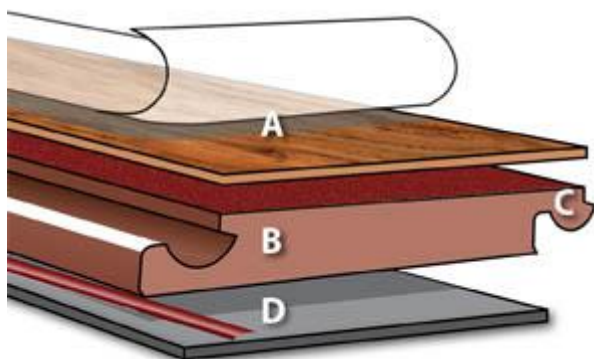


Kirk Trims

M.FLOORS has a comprehensive range of trims supplied by Kirk Direct to meet the curves, expansions, transitions, steps, ends and finishes required for laminate floors.

Panel Construction

M.FLOORS laminates consist of four stable layers which ensure the extraordinary durability and unique quality of M.FLOORS.



A) The top surface of the flooring consists of a specially resistant protective overlay film. This is fused with an attractive resinated decorative film into an abrasion-resistant, hard-wearing surface.

B) Extremely dense HDF fibreboard forms the supportive core (HDF, E1).

C) All tongue-in-groove profiles are treated with a protective wax compound for protection against dampness and climatic influence.

D) On the undersurface of the core a dampness impeding stabilization film ensures and preserves the high structural stability of M.FLOORS laminates.

Specifications on M•Floors

The core of the M.FLOORS laminate flooring has the following specifications:

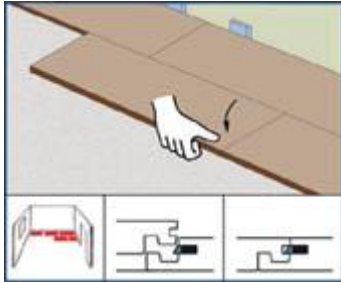
The core of each laminate is made from HDF (high density fibre) from fresh wood collected from ecological forest thinning operations. M.FLOORS laminates percentage of wood is consistently between 80 and 85%. No harmful substances such as halogen, chloride, PVC, PCB and dioxin are contained in the M.FLOORS laminate. The M.FLOORS laminate floor contributes to a natural and healthy room climate, in conforming to the highest health standards and is particularly recommended for persons with dust allergies.

M.FLOORS laminate flooring is made up in panels which click together to create a laminate floor.

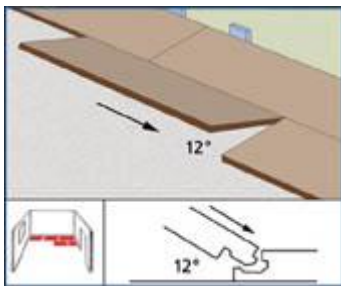
Express Clic System

New and improved short end joint

- Much easier to install
- Up to 50% quicker to install against other click systems
- No hammer, friction free installation insures against edge damage
- Safe and stable



Simply lower the panel applying light pressure until you hear the Express Clic System lock.



Insert the long end joint into the previously installed row, slide panel to the right until the joint ends meet.

Quality Coding



High density
Fibreboard(HDF - E1)
80 -85% wood



Load and
impact
resistant



Non fading,
retaining
brilliance for
years



Dampness impeding
stabilizing film



Stain resistant



Suited for
installation over
sub-floor heating



Hard wearing (Class
31) and easy to clean



Flame
resistant



Easy to fit click
system



Abrasion resistant and
suitable for castors



Largely
resistant to
cigarette
embers



Matching skirting
prof

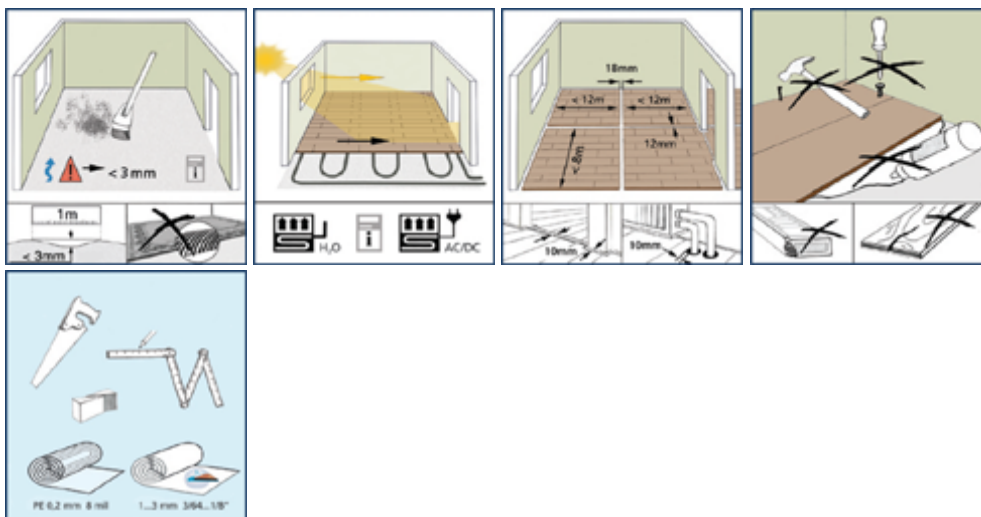
Preparation



Before installation, M.FLOORS flooring should be stored horizontally in the room for at least 48 hours, unopened in its original packaging. Before, during and at least three days after installation, the room should be maintained in the following conditions:

Floor surface: min. 15°C • Air temperature: min. 18°C • Humidity: 50 - 75%

General Information



Laying Instructions

