

# Siniat System Summary



## Siniat Firecheck Wall 102/F60 A52 GW102mm

Components	System weight (kg/m <sup>2</sup> )	Max height (m)	Overall Thickness (mm)	Fire perf (mins)	Acoustic Perf. (R <sub>w</sub> -dB)
<ul style="list-style-type: none"> <li>• 1x15mm Siniat Firecheck T/E Plasterboard</li> <li>• 14-18kg/m<sup>3</sup> glasswool</li> <li>• 102mm Drywall steel stud</li> <li>• 103mm Drywall steel track 15mm</li> <li>• Siniat Drywall jointing compound</li> <li>• 25mm Drywall Screws</li> <li>• Floor and ceiling finishes as per specification</li> </ul>	24	3.6	132	60	52

## Specifications

### Siniat Fixed Partition: 132mm

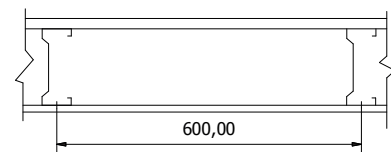
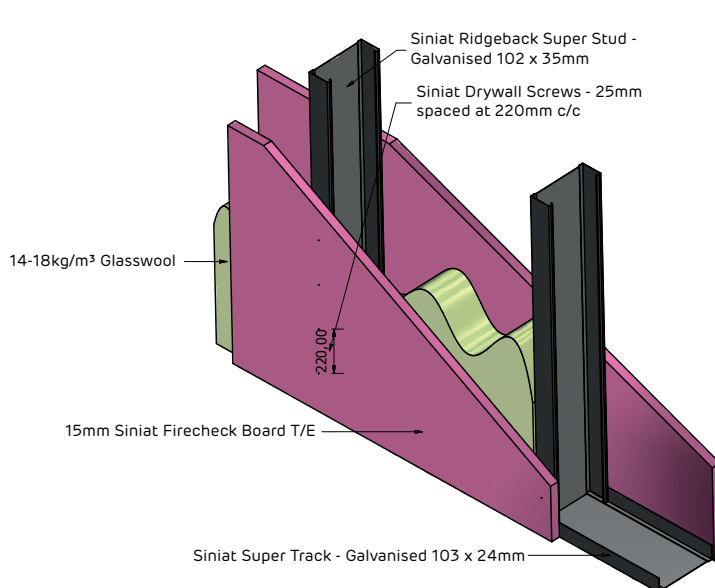
Supply and install Siniat Fixed Partition from Siniat drywall partitioning system with an overall thickness of 132mm comprising internal framing formed of 102mm Siniat galvanised steel studs fixed at 600mm centres to Siniat galvanised steel top track / aluminium female head section and Siniat galvanised steel floor track, where necessary, any additional galvanised steel stud to form door openings, glazing and other apertures, angles and corners and terminated ends. Install glasswool in the metal frame cavities.

The internal steel framing is to be dressed on both sides with 15mm thick Siniat Firecheck plasterboard in single layer to suit height, butt jointed and secured to steel stud with 25mm drywall screws at maximum 220mm centres. Joints are to be taped and jointed with Siniat Jointing Compound and Siniat fibatape and prepared for painting.

All external aluminium door frames, glazing frames, ceiling and wall channels and skirting are to be formed of natural anodized / colour anodized / powder coated to specific colour.

### Maximum Height: 3600mm

Installation to be in accordance with SABISA (South African Building Interior Systems Association) installation guidelines.



Tel: (+27 11) 389 4500

Email: [contactus.mbs@etexgroup.com](mailto:contactus.mbs@etexgroup.com)

[www.marleybuildingsystems.co.za](http://www.marleybuildingsystems.co.za)