

Siniat System Summary



Siniat Standard Wall 64/F30 A42 GW51mm H4.2

Components	System weight (kg/m ²)	Max height (m)	Overall Thickness (mm)	Fire perf (mins)	Acoustic Perf. (R _w -dB)
<ul style="list-style-type: none"> • 12mm Standard T/E plasterboard • 64mm Drywall steel stud • 14-18kg/ m³ glasswool • 65mm Drywall steel track • Siniat Drywall Jointing Compound • 25mm Drywall Screws • Floor and ceiling finishes as per specification 	21	4.2	89	30	42

Specifications

Siniat Fixed Partition: 89mm

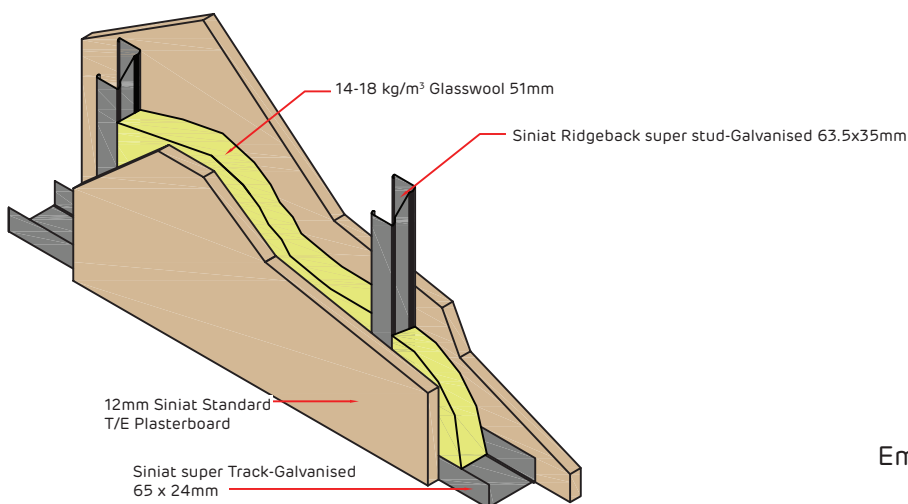
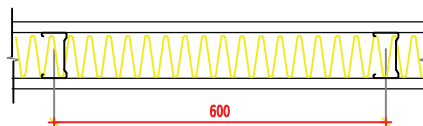
Supply and install Siniat Fixed Partition from Siniat drywall partitioning system with an overall thickness of 89mm comprising internal framing formed of 64mm Siniat galvanised steel studs fixed at 600mm centers to Siniat galvanised steel top track / aluminium female head section and Siniat galvanised steel floor track, where necessary, any additional galvanised steel stud to form door openings, glazing and other apertures, angles and corners and terminated ends. Install glasswool in the metal frame cavities.

The internal steel framing is to be dressed on both sides with 12mm thick Siniat Plasterboard in single layer to suit height, butt jointed and secured to steel stud with 25mm drywall screws at maximum 220mm centers. Joints are to be taped and jointed with Siniat Jointing Compound and Siniat fibatape and prepared for painting.

All external aluminium door frames, glazing frames, ceiling and wall channels and skirting are to be formed of natural anodized / colour anodized / powder coated to specific colour.

Maximum Height:4200mm

Installation to be in accordance with SABISA (South African Building Interior Systems Association) installation guidelines.



Tel: (+27 11) 389 4500

Email: contactus.mbs@etexgroup.com
www.marleybuildingsystems.co.za