

Siniat System Summary



Siniat Secure Wall 64/F60 A53 GW51mm Glv 0,5mm

Components	System weight (kg/m ²)	Max height (m)	Overall Thickness (mm)	Fire perf (mins)	Acoustic Perf. (R _w -dB)
<ul style="list-style-type: none"> • 2x12mm Standard T/E plasterboard • 63.5mm Drywall steel stud • 65mm Drywall steel track • 14-18 kg/m³ glasswool • Siniat Drywall jointing compound • 25mm and 41mm Drywall Screws • 0,5mm galvanised steel sheet • Floor and ceiling finishes as per specification 	23	3.6	112	60	53

Specifications

Siniat Fixed Partition: 112mm

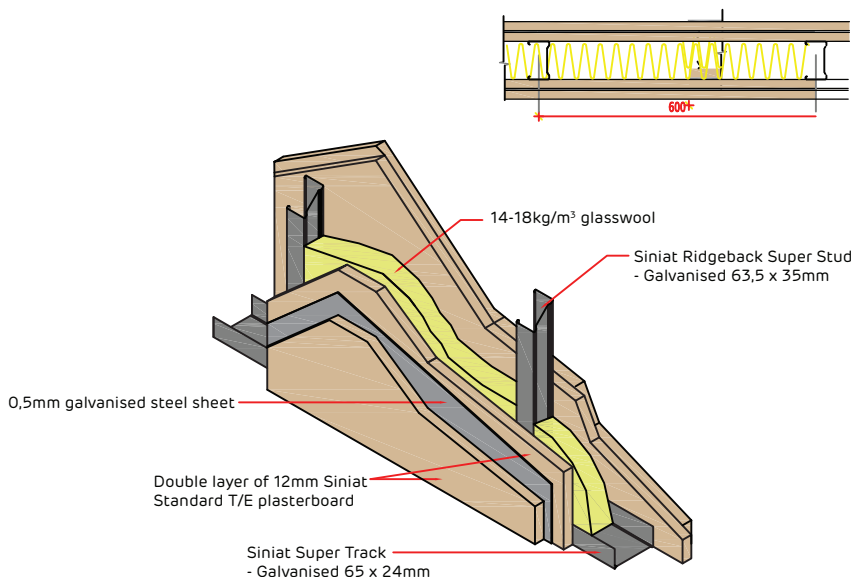
Supply and install Siniat Fixed Partition from Siniat drywall partitioning system with an overall thickness of 112mm comprising internal framing formed of 64mm Siniat galvanised steel studs fixed at 600mm centres to Siniat galvanised steel track / aluminium female head section and Siniat galvanised steel floor track, where necessary, any additional galvanised steel stud to form door openings, glazing and other apertures, angles and corners and terminated ends. Install glasswool in the metal frame cavities.

The internal steel framing is to be dressed on both sides with 12mm thick Siniat standard plasterboard in single layer to suit height, with 0,5mm galvanised steel sheet between the board layers. Butt jointed and secured to steel stud with 25mm drywall screws at maximum 220mm centres. Joints are to be taped and jointed with Siniat Jointing Compound and prepared for painting.

All external aluminium door frames, glazing frames, ceiling and wall channels and skirting are to be formed of natural anodized / colour anodized / powder coated to specific colour.

Maximum Height: 3600mm

Installation to be in accordance with SABISA (South African Building Interior Systems Association) installation guidelines.



Tel: (+27 11) 389 4500

Email: contactus.mbs@etexgroup.com

www.marleybuildingsystems.co.za