

Underground

Soil & Vent

Waste

Accessories

Hot & Cold
Marley Equator

Hot & Cold
latco

VYNADEEP®

Streamline®

Fascia & Barge

Compression Fittings

HDPE Pipes

Folding Doors

an OAliaxis company

THIS ILLUSTRATION SERVES AS A GUIDELINE ONLY

uPVC UNDERGROUND

1. UYAR41: Junction 45° Ribbed Access Right 110 mm
2. UYAR42: Junction 45° Ribbed Access Left 110 mm
3. UBR42: Bend Plain ¼ (90°) 110mm
4. UBR41: Bend Plain ¼ (45°) 110mm
5. UTHS420: Twin-Wall Heavy Duty Pipe 110mm
6. UAP43: Rodding Eye 45° 110mm
7. UGB40: Gully 'P' Trap 110mm

uPVC SOIL & VENT

1. SAV110: Two-Way Vent Valve 110mm
2. SC40: Aluminium Holderbat 110mm
3. SY42: Junction Single Access Heel 87.5° 110mm
4. SG40: Pan Collar Straight Solvent Weld
5. SW41: Junction Reducing Single Access Heel 87.5° 110mm
6. SEA402: Stopped Access 110mm
7. SL406: Pipe 110mm Plain 2m
8. SGH40: Overflow Gully Head 110mm

uPVC WASTE

1. WAB5: Strap on Boss 50mm
2. WHB5: PVC Holderbat / Ratchet 50mm
3. WH5: Pipe Clip 50mm
4. WBE51: Bend Access Heel 87.5° 50mm
5. WPE311: Pipe 50mm Plain
6. ETP11: Marley Waste Trap 50mm
7. ETB01: Waste Trap Bath 40mm
8. ETP10: Marley Waste Trap 40mm

MARLEY STREAMLINE GUTTERS

1. SE501: Double-Flo Stopped
2. SO503: Double-Flo Gutter Outlet
3. SNE300: Square Downpipe Bend-Shoe
4. SPH310: Double-Flo Downpipe Extrusion, Plain Ended 3m
5. SC302: Square Downpipe Clip
6. SU50: Double-Flo Union Clip
7. SK501: Double-Flo Fascia Bracket

MARLEY VYNADEEP GUTTERS

1. DK501: Fascia Bracket
2. DGH520: Gutter 6m
3. DO503: Outlet
4. DNE300: Swan-neck Ends (pair) 110°
5. DPH310: Socketed Pipe 3m
6. DC302: Pipe Clip
7. DS30: Shoe

LATCO PRESSURE REGULATING VALVES

1. LAT17: Latco Neptune Relief Valve
2. LAT16: Latco Neptune Pressure Control Valve

MARLEY EQUATOR HOT & COLD WATER SYSTEMS

1. EET22: Equal Tee 22mm
2. EB9022: Equal Elbow (90°) 22mm
3. EBPB152: 15mm x ½" Female BSP Thread
4. KMSS15015: Equator Pipe Coil 15mm

MARLEY FOLDING DOORS

1. newGeneration
2. President
3. Eurostar
4. Rapid

Your Value Partner

For more information and product enquiries visit www.marleypipesystems.co.za

Marley Pipe Systems serves the key market segments of the plumbing and construction as well as the civil, mining, irrigation and industrial industries, primarily in South Africa, but also supplying into Africa, the Indian Ocean Islands, Europe and Australia.

Marley Pipe Systems has manufacturing facilities at Nigel in Gauteng as well as at Port Shepstone in KwaZulu-Natal. The distribution network encompasses 11 branches around the country as well as sales offices in Namibia and Botswana, coupled with an active export division selling into Africa, the Indian Ocean, Europe and Australia.

Marley Pipe Systems (Pty) Ltd is proud to be independently verified by Emex as a Level 6 B-BBEE (Broad-Based Black Economic Empowerment) Contributor with a 60% B-BBEE Procurement Recognition.

ENVIRONMENTAL POLICY

Marley Pipe Systems is dedicated to aligning its activities with an environmental policy that undertakes to reduce its effect on the environment, including where its products are sourced, manufactured, used and disposed.

Marley are committed to:

- Improving our understanding of the effects Marley may have on the environment and looking to minimise these impacts
- Ensuring that all staff are aware of the legal requirements regarding the discharge of waste material
- Eliminating waste of any sort in our business in terms of materials, energy inputs and process
- Promoting the recycling of materials within the manufacturing and office situation
- Guaranteeing our products are free of lead and plasticisers
- Benchmarking our performance against similar companies externally and within the Aliaxis Group
- Complying with all the appropriate regulations and standards, and ensuring we have the necessary statutory licences



Vision

To become the preferred and most respected distributor and manufacturer of quality plastic pipe systems in sub-Saharan Africa.

Purpose

To provide reliable, quality plastic pipe solutions as well as superior service and added value to benefit Marley, its employees and other stakeholders.

Values

- Integrity
- Honesty
- Passion
- Commitment
- Reliability
- Respect
- Professionalism
- Ethics
- Trust
- Accountability
- Compassion
- Excellence

OUR COMMITMENT TO QUALITY

Marley Pipe Systems is on the move to offer tremendous value to the plumbing industry through first-rate products, service delivery and hands-on training sessions. Marley implements the ISO9001 Quality Management System, an international tool used to keep all functions within Marley Pipe Systems in check in terms of consistently ensuring that quality products and superior services are supplied to the customers as a whole package.

Marley abides by the set SANS specifications and in some cases, exceeds these requirements. As an example, the Marley Pipe Systems testing frequencies are higher than those set out in the SABS mark scheme documentations, allowing Marley Pipe Systems to pick up non-conformities faster, and effect corrective action promptly and efficiently. This ensures that we constantly know the status of our products' quality and the effectiveness of the production process.

The result: CUSTOMER SATISFACTION.

Marley Pipe Systems bear the stamp of approval with various SABS (South African Bureau of Standards) marks on our products. Our Equator indoor hot and cold water systems are now even more sustainable. We have recently received official confirmation that we are authorised to use the SABS mark on locally assembled Equator fittings.



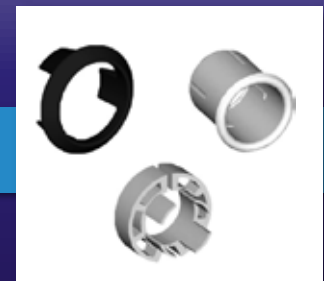
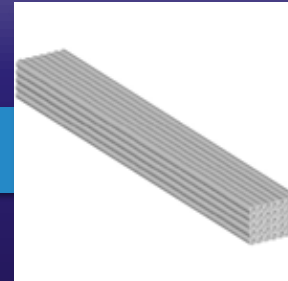


15875 - 1, 2, 3 & 5: 2004

Marley equator[®]

The hot & cold water system
suitable for domestic, commercial & light industrial applications

Install according to manufacturer guidelines.
Do not install pipes on a direct heat source or expose to direct sunlight.





15875 - 1, 2, 3 & 5: 2004

Stopends

ESEP15 - 15mm
ESEP22 - 22mm



Copper Pipe Insert

ECPI15 - 15mm
ECPI22 - 22mm
ECPI28 - 28mm



Pipe Support Sleeves

KEPSS15 - 15mm
KEPSS22 - 22mm
KEPSS28 - 28mm



De-mounting Tools

EDT15 - 15mm
EDT22 - 22mm
EDT28 - 28mm



Female BSP Adaptors

ESKF152 - 15mm x 1/2"
ESKF223 - 22mm x 3/4"



Wall Plate Elbows

EBPB152 - 15mm x 1/2"



Elbows

EB9015 - 15mm
EB9022 - 22mm



Tees

EET15 - 15mm
EET22 - 22mm



Branch Reducing Tees

EBRT22 -
22mm x 22mm x 15mm



Straight Connectors

ESC15 - 15mm
ESC22 - 22mm



Reducers

ESKR2215 -
22mm spigot x
15mm socket reducer



Male BSP Adaptors

ESKM152 - 15mm x 1/2"
ESKM223 - 22mm x 3/4"





15875 - 1, 2, 3 & 5: 2004

features and benefits of marley equator

- One push jointing system ensures joint integrity
- De-mountable and re-usable fittings, no internal components to replace
- No loose parts, no possibility of losing working parts
- Unique de-mounting tools offer a tamper proof and secure system
- Comprehensive range of highly durable pipes and fittings
- No costly tools required
- PE-X has a worldwide track record of over 30 years in hot & cold water applications
- Very high chemical resistance
- Wide fittings range accommodating a variety of pipe system layouts
- System classification PN16
- Available in coils & straight lengths

Male Adaptors
90° Bend



ESKM90152 -
15mm x 1/2"



198

latco

Pressure Control and Relief Valves



Please note: This brochure does not reflect the entire Marley product range. Please contact us for more info.



198

Neptune 100kPa

Neptune Pressure Control Valve

LAT10
100kPa BSP



Neptune Pressure Control & Relief Valve

LAT12c
100kPa Copper to Copper



Neptune Relief Valve

LAT11
100kPa BSP



Neptune 200kPa

Neptune Pressure Control Valve

LAT13
200kPa BSP



Neptune Pressure Control & Relief Valve

LAT15c
200kPa Copper to Copper



Neptune Relief Valve

LAT14
200kPa BSP



Neptune 400kPa

Neptune Pressure Control Valve

LAT16
400kPa BSP



Neptune Pressure Control & Relief Valve

LAT18c
400kPa Copper to Copper



Neptune Relief Valve

LAT17
400kPa BSP



Neptune 600kPa

Neptune Pressure Control Valve

LAT600
600kPa BSP



Neptune Pressure Control & Relief Valve

LAT602
600kPa Copper to Copper



Neptune Relief Valve

LAT601
600kPa BSP



Standard 100kPa

Pressure Control Valve

LAT25
100kPa



Relief Valve

LAT26
100kPa
NON-SABS



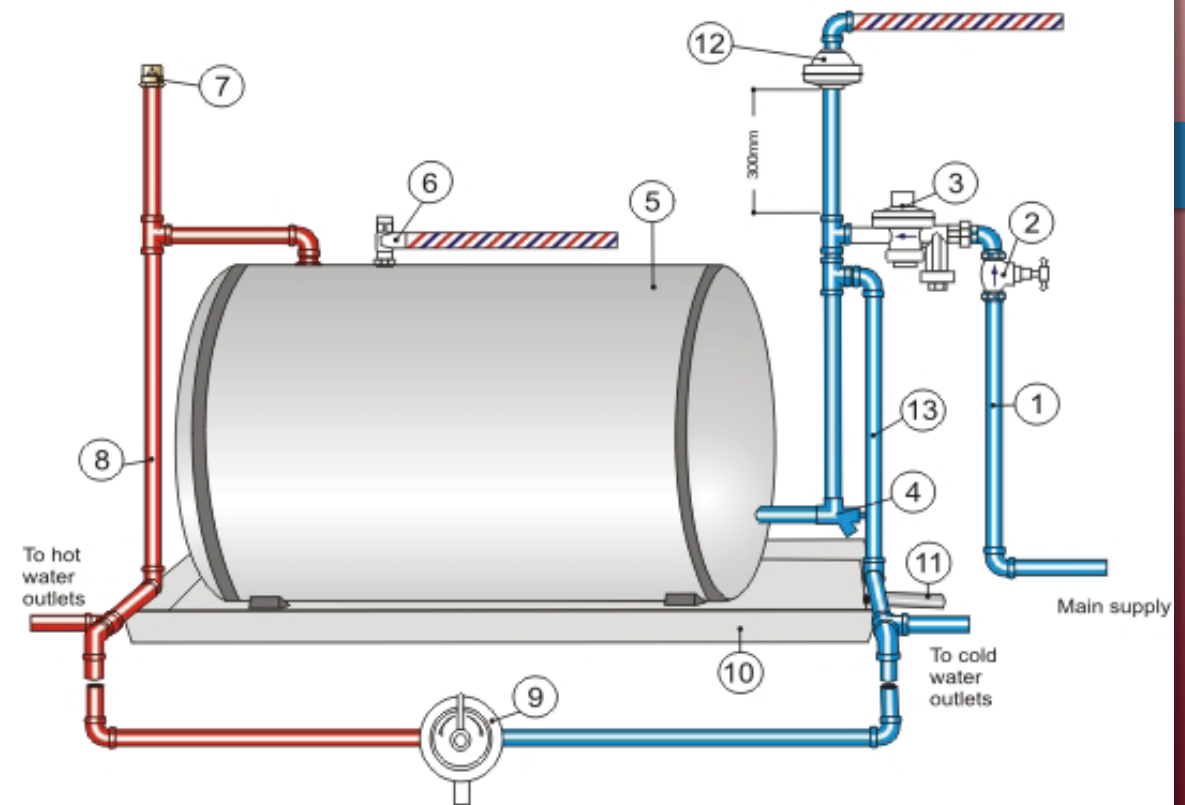
Pressure Control & Relief Valve

LAT27
100kPa



installation

1. Cold water inlet pipe
2. Stop cock
3. Latco Neptune Pressure Control
100kPa - LAT10, 200kPa - LAT13
400kPa - LAT16
4. Drain cock
5. Hot water cylinder
6. Temperature and Pressure Safety Valve with
separate overflow pipe
7. Latco Vacuum Breaker - LAT49
8. Hot water pipe
9. Mixer
10. Drip tray
11. Drip tray outlet pipe
12. Latco Relief Valve with Vacuum Breaker
100kPa - LAT11, 200kPa - LAT14,
400kPa - LAT17
600kPa - LAT602
13. Balance to cold water mixers, etc.





14236

Marley

Compression Fittings

Operating Pressure at 20°:
from 16mm to 63mm - 16 Bar
from 75mm to 110mm - 10 Bar





14236

MARLEY COMPRESSION FITTINGS

Coupling



Reducer
Coupling



Male Adaptor



Female Adaptor



Elbow
Male Threaded



Elbow
Female Threaded



Elbow



Plug



Tee



Tee Male
& Female
Threaded



Elbow
Female Threaded



Flange
Adaptor





14236

Philmac Compression Fittings

Philmac Compression Fittings



Philmac is an engineering system with a maximum operating pressure of 1600kPa and is used for mining and industrial applications.

The Philmac range includes compression and transition fittings with slide and tighten technology, making them easy to use.

Contact a Marley sales representative for additional information or to view the Philmac catalogue. Email marketing@marleyps.co.za to request a full Philmac Catalogue.

Magnum Saddles

Marley Magnum Saddles are engineered for use above or below ground for the transfer of fluids, including water, chemicals or slurries. Marley Magnum Holderbats have been engineered as a fitting to provide good support for suspended pipes.

- N 16 pressure ratings at 20°C.
- Nitrile sealing gasket for excellent sealing performance and chemical resistance.
- Suitable for contact with potable water.
- High grade polypropylene body selected for its tough, high impact, lightweight and durable properties.
- Stainless steel reinforcing rings on threaded branch. (Not supplied for holderbats)
- Bolt clips to facilitate easy assembly.
- Hexagon moulding to prevent bolt turning during assembly.
- Supplied with Zinc electroplated steel bolts and nuts. (Stainless Steel available on request).
- The threaded branch of saddles can be supplied with a threaded brass insert on request.

magnum
SADDLES

16 Bar iso 4427



Our Value to You

For more information and product enquiries visit www.marleypipesystems.co.za

Marley Pipe Systems' website is designed to bring you a more informative, user-friendly and value-added interactive browsing experience, empowering you to engage with us like never before.

The new Marley website contains a host of new features that will allow you to benefit from technical information, product support and the latest news from Marley, all available at the click of a button.

- Navigate through a wealth of information including product catalogues, schematics, downloads, FAQs and more.
- Locate your nearest stockists of the Marley range.
- Select your profile type to receive customised information suited directly to your needs.

Interactive 3D House

A valuable addition to the Marley website is the Interactive House.

Navigate through our realistic 3D-rendered house to interactively view the various product ranges that Marley has to offer.

Each product has been individually modelled to show best practice of installation and application to help you find exactly what you're looking for.



Merchandising

