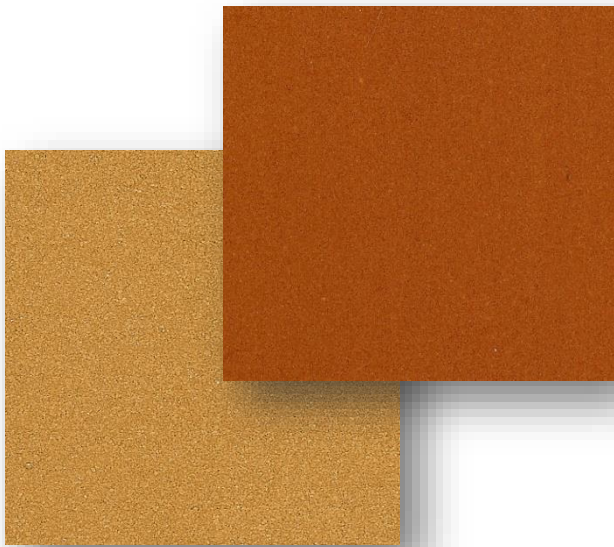


# Marmoran

The Architects' Choice

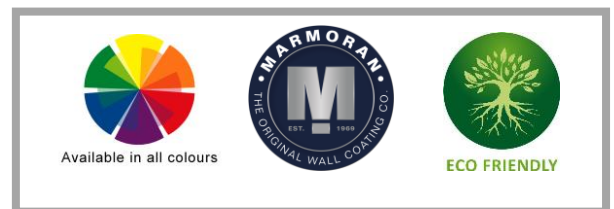
## COSMOS

*DISTINCTIVE SUBTLE TEXTURE WITH A FINE PEARLESCENT GLOW*



### PRODUCT INFORMATION

- Suitable for interior or exterior use on either new or previously painted walls that have been properly prepared.
- Offers maximum water resistance and promotes "self cleaning".
- Low sheen.
- Hides surface imperfections.
- Durable.
- Eco friendly, water based, LOW VOC LEVEL [12g/L]
- Made to order, supplied ready to use.



### MARMORAN GUARANTEE

**MARMORAN 10 YEAR PRODUCT GUARANTEE** is issued on condition that the system is applied by a Marmoran Licensed Applicator in strict accordance to the full specification and is accepted and signed by the relevant parties. Due to the demand for the highest standard of application and finish, it must be applied by a trained applicator that is skilled and experienced.

SA National Enquiries: 0861 627 266

[www.marmoran.co.za](http://www.marmoran.co.za)

**B-BBEE COMPLIANT**

© COPYRIGHT 2008:

No part of this document may be reproduced by any means unless express written permission has been granted by MARMORAN (Pty) South Africa.

International enquiries: +27 21 797 4250

Email: [info@marmoran.co.za](mailto:info@marmoran.co.za)

11.12.2019

# Marmoran

The Architects' Choice

## COSMOS

PRODUCT CODE AS027

PRODUCT DATA INFORMATION SHEET

### PRODUCT DESCRIPTION

Marmoran Cosmos is a new generation textured and protective pure acrylic coating for both interior and exterior use. It is based on a fine particle size, adhesion promoted pure acrylic polymer. It offers maximum water resistance and promotes self-cleaning. It also provides a durable, seamless low sheen finish that hides surface imperfections.

### TESTED TO NATIONAL & INTERNATIONAL STANDARDS BY THREE INDEPENDENT LABORATORIES.

#### TEST STANDARDS

<b>ASTM D4828</b>	Easily cleaned up to 10,000 scrubs without exhibiting wear or signs or loss of adhesion
<b>CGR/R+H</b>	Superior quality pure acrylic resin ensures resistance to dirt pickup
<b>ASTM 4060</b>	Tough & durable with high resistance to abrasion & scuffing
<b>ASTM G53</b>	UV resistant to prevent excessive chalking, colour change, flaking or peeling
<b>ISO 1519</b>	Exhibits outstanding flexible qualities, yet hard and durable to withstand the stresses of natural expansion and contraction of the substrate
<b>ASTM E96</b>	Controlled water vapour permeability allows the walls to "breathe" to maintain resistance to water ingress and prevent spalling, delamination, algae and dirt retention
<b>ISO 2409</b>	Superior adhesion to all suitably primed substrates
<b>SABS 170</b>	Excellent resistance to alkali salts to prevent coating delamination and adhesion
<b>SABS 1586</b>	Ability to withstand high temperatures with no signs of delamination, blistering or loss of adhesion
<b>SABS 146</b>	Excellent impact resistance and tensile strength
<b>ISO 12040</b>	Exceptional weathering, water repellency and ultraviolet resistant properties

### USES

- Designed for interior or exterior use as a protective and decorative coating for a wide variety of new or Previously coated surfaces that have been suitably prepared. This includes cement plasters, concrete, fibre cement, ceiling boards, off shutter concrete, highly porous surfaces, gypsum.

### COLOUR

- Available in all colours

### AVAILABILITY

- Made to order. Supplied ready for use. DO NOT THIN.

### PACKAGING

- 5, 20 and 200 L containers

### GENERAL CONSIDERATION REGARDING APPLICATION

#### SITE SURVEY REPORTS

Site Survey Reports and Records are to be completed prior to product application, during the application and on completion of the project so that the relevant documentation is available for the Guarantee.

SA National Enquiries: 0861 627 266

[www.marmoran.co.za](http://www.marmoran.co.za)

B-BBEE COMPLIANT

© COPYRIGHT 2008:

No part of this document may be reproduced by any means unless express written permission has been granted by MARMORAN (Pty) South Africa.

International enquiries: +27 21 797 4250

Email: [info@marmoran.co.za](mailto:info@marmoran.co.za)

11.12.2019

# Marmoran

The Architects' Choice

## COSMOS

### CLIMATIC CONDITIONS

Adequate protection should be provided against rain and sub-zero temperatures for a period of not less than 24 hours after application. The coating should never be applied during adverse weather conditions, or on wet surfaces. Even if the weather seems fit for painting, there may be condensation if the temperature of the substrate is at or below the dew point (temperature at which the atmospheric humidity condenses e.g. as dew) the product should only be applied when the temperature of the substrate is at least 2 deg C above dew point. In hot climates, the coating should be applied during the morning and late afternoon hours and if possible away from direct sunlight. Variations in temperatures will affect drying times.

### APPLICATION CRITERIA

- Please refer to our notes on **BEST PRACTICES FOR SURFACE PREPARATION**.
- **Inspect the substrate:** The plaster substrate must conform to a smooth and even finish. This can be achieved with a fine wood float or we recommend a steel float finish.
- The product must be applied in strict accordance to the Manufacturer's System and Specification.
- Adequate time should be allowed for it to cure [confirm a moisture reading of <15%: this may take from 7-21 days, depending on weather conditions] prior to the application of any specialised, semi-specialised coating or paint.
- **Prepare the substrate** appropriately to ensure that the surface is clean, dry and sound.
- Ensure that the **scaffold** be positioned at a comfortable distance away from the surface so that application technique is not compromised. (400-600mm).
- **Sealing of expansion/control joints:** we recommend the use of sealant compatible with the specified Marmoran product, a suitable Marmoran Primer may then be applied directly over these joints.
- We strongly recommend the use **tape joints** to create paneling and so to **avoid dry joints**.
- **Batch control** it is the responsibility of the contractor to ensure colour consistency. It is recommended that sufficient material to complete the project be ordered where possible to eliminate possible colour variation. Where this is not practical, sufficient material to complete an elevation should be ordered with any excess used as the first coat on the subsequent elevation.
- **Check** spread rates, tools and patterning.
- The product is **supplied ready for use. DO NOT THIN.**

### APPLICATION METHOD

Supplied ready for use. Mix gently with a flat paddle before and during application. Do not use a mechanical mixer as this could over develop the colour. Clean with water. Application tools: sheepskin and block brush.

- **Apply 1** even coat of the **Marmoran Acrylic Primer** and allow to cure for at least 12 hours.
- **Apply 2 coats of Marmoran Cosmos** as detailed below:
- **This is a 2 person technique:**
  - a) the first person spreads the material evenly by **crosshatching with a sheepskin or similar type of roller** and
  - b) The second person immediately finishes off by using a **block brush** to gently pull down in vertically direction to create the desired textured finish.
  - c) Allow the first coat to cure for at least 12 hours before repeating the procedure**Repeat steps a & b to apply the second coat**

# Marmoran

The Architects' Choice

## COSMOS

### SPECIFICATION FOR MARMORAN COSMOS SYSTEM

#### NEW WORK

**Prepare the substrate** appropriately to ensure that the surface is clean, dry and sound.

**Inspect the substrate:** The plaster substrate must conform to a smooth and even finish. This can be achieved with a fine wood float or we recommend a steel float finish. Adequate time should be allowed for it to cure [confirm a moisture reading of <15%: this may take from 7-21 days, depending on weather conditions] prior to the application. **Apply 1 even coat** of the appropriate **Marmoran Primer**. **Apply 2 coats** of **Marmoran Cosmos** [ASTM E96 Compliant: Controlled Water Vapour Permeability] to match the approved colour & pattern of **Marmoran Sample Reference Number: S/\_\_\_\_\_**.

**This Marmoran Coating System Has 10 Year International Guarantee Underwritten By A Third Party.** It is issued on condition that it has been applied by a Marmoran Licensed Applicator in strict accordance to the full specification and is accepted and signed by the relevant parties. Due to the demand for the highest standard of application and finish, it must be applied by a trained applicator that is skilled and experienced

#### REDECORATION

Prepare the surface by removing all loose and flaking paint, dirt, grease and grime. Make good all cracks and defects and then repair and prime to match the existing surface. Proceed as for new work.

#### PRODUCT DATA

<b>Composition</b>	Inert Pigments, Marble aggregate, Fillers & Special additives dispersed in a fine particle size adhesion promoted pure Acrylic Resin.
<b>Solvent</b>	Water
<b>Type</b>	
<b>Solids</b>	<b>Volume</b> 53% ± 2% <b>Mass</b> 63% ± 2%
<b>VOC LEVEL</b>	<b>12g/L 0.78% The International GREEN SEAL STANDARD is 150g/L [11.5%] for non-flat coatings.</b>
<b>Drying Times</b>	<b>Surface Dry:</b> 3 hours <b>Hard Dry:</b> 12-16 hours
<b>@ 25 deg C, 65% RH</b>	Higher temperatures will accelerate the drying times (approximately halved for every 10 °C increase) Lower temperatures will retard the drying times (halved for every 10 °C decrease)
<b>Theoretical Spread rate</b>	3 - 4 m <sup>2</sup> / L / coat (2 coats) <b>Wet Film Thickness:</b> 667 µ per coat <b>Dry Film Thickness:</b> 353 µ per coat This figure is indicative, and subject to applicator skill and substrate type and condition. Actual spread rates must be determined by the Applicator.
<b>Shelf Life &amp; Storage</b>	6 - 8 Months in unopened containers. Store in a cool dry and well ventilated place away from excessive heat or an open flame. Do not allow to freeze.
<b>Transport</b>	This product is non-hazardous in accordance with Transportation and Classification of Dangerous Goods Act (1996)
<b>Handling &amp; Safety</b>	This product is water based and non-toxic. Keep out of reach of children. It does contain chemicals that may be irritants to mammalian tissue. Appropriate protective clothing must be worn. Protect eyes and skin from exposure. If the product is being sprayed, ensure adequate ventilation and ensure the use of proper ventilated masks. Wash spillages immediately with water. Do not induce vomiting if swallowed. Consult a physician if irritation of the skin persists or if product is ingested. Gather up environmental spillages and dispose of in accordance with regulations of local authorities.

**Disclaimer** All information contained herein is given in good faith, based on our specialised knowledge and experience. We reserve the right to effect changes to product and specification alike in the interest of product development and improving technology.