

Marmoran

The Architects' Choice

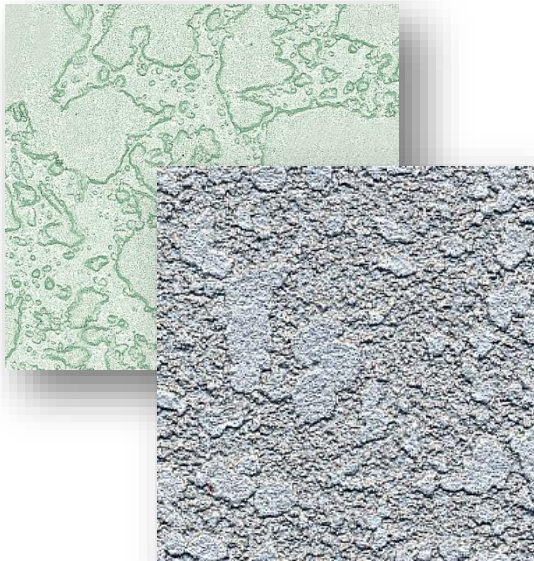
LENATAFOIL

DESIGNER COLLECTION

A TEXTURED, STIPPLED AND PRESSED METALLIC COATING



PRODUCT INFORMATION



- Suitable for interior or exterior use on either new or previously painted walls that have been properly prepared.
- Marmoran Lenatafoil is a stippled and pressed low relief coating that is over coated with Marmoran Metallica.
- 2 variations of this spray and pressed finish: Textured or Smooth.
- Wide range of Metallica colours.
- An advantage of Marmoran Lenatafoil is that it hides surface imperfections due to its high build finish.
- May be sealed with a glaze to further enhance and protect.
- Eco friendly, water based, LOW VOC LEVEL.
- Made to order, supplied ready to use.



SA National Enquiries: 0861 627 266

www.marmoran.co.za

B-BBEE COMPLIANT

© COPYRIGHT 2008:

No part of this document may be reproduced by any means unless express written permission has been granted by MARMORAN (Pty) South Africa.

International enquiries: +27 21 797 4250

Email: info@marmoran.co.za

11.12.2019

Marmoran

The Architects' Choice

LENATAFOIL

PRODUCT CODE AS020

PRODUCT DATA INFORMATION SHEET

PRODUCT DESCRIPTION

Marmoran Lenatafoil is a stippled and pressed low relief coating that is over coated with Marmoran Metallica. Marmoran Lenatafoil produces a high build textured or smooth spray and pressed finish. An advantage of Marmoran Lenatafoil is that it hides surface imperfections due to its high build finish.

FEATURES & BENEFITS

- Excellent adhesion to adequately prepared and primed substrates.
- Excellent Weather and Ultraviolet Resistance.
- Is extremely tough and durable.
- Superior Alkali Resistance, hence no tendency to Saponification.
- Rapid Drying Properties.
- Has excellent impact and abrasion resistance.
- **LOW VOC LEVEL**
- water based, low odour, user and environmentally friendly.

USES

- Designed for interior and exterior use as a decorative and protective coating over a wide range of substrates and coating systems.

COLOUR

- The base coat is a natural white colour, a vibrant colour from the Marmoran Metallica range is used as the topcoat.

PACKAGING

- Marmoran Lenatafoil Basecoat Smooth is packed in 6.5 & 25 kg containers.
- Marmoran Lenatafoil Basecoat Textured is packed in 8 & 32 kg containers.
- Information on **Marmoran Metallica Coatings** is available on the relevant PDIS

GENERAL CONSIDERATION REGARDING APPLICATION

CLIMATIC CONDITIONS

Adequate protection should be provided against rain and sub-zero temperatures for a period of not less than 24 hours after application.

The coating should never be applied during adverse weather conditions, or on wet surfaces. Even if the weather seems fit for painting, there may be condensation if the temperature of the substrate is at or below the dew point (temperature at which the atmospheric humidity condenses e.g. as dew) the product should only be applied when the temperature of the substrate is at least 2 deg C above dew point. In hot climates, the coating should be applied during the morning and late afternoon hours and if possible away from direct sunlight.

Variations in temperatures will affect drying times.

APPLICATION CRITERIA

- The product must be applied in strict accordance to the Manufacturer's System and Specification.
- Please refer to our notes on **BEST PRACTICES FOR SURFACE PREPARATION**.

Marmoran

The Architects' Choice

LENATAFOIL

- **Inspect the substrate.** The plaster should be a fine wood float finish and adequate time should be allowed for it to cure prior to the application of any specialised, semi-specialised coating or paint. [Use a moisture metre to confirm a reading of <15%, this may take from 7-21 days, depending on weather conditions]
- **Prepare the substrate** appropriately to ensure that the surface is clean, dry and sound.
- Ensure that the **scaffold** be positioned at a comfortable distance away from the surface so that application technique is not compromised (400-600mm).
- **Sealing of expansion/control joints** - we recommend the use of sealant compatible with the specified Marmoran product, a suitable Marmoran Primer may then be applied directly over these joints.
- **We strongly recommend the use tape joints to create paneling and so to avoid dry joints, this is particularly important when applying the product over a large area.**
- **Batch control** it is the responsibility of the contractor to ensure colour consistency. It is recommended that sufficient material to complete the project be ordered where possible to eliminate possible colour variation. Where this is not practical, sufficient material to complete an elevation should be ordered with any excess used as the first coat on the subsequent elevation.
- **Check** spread rates, tools & patterning.

APPLICATION METHOD

Marmoran Lenatafoil is achieved by the spray application of Marmoran Lenatafoil Smooth or Textured Basecoat with a Marmoran Hopper Spray Gun. This is then over coated with Marmoran Metallica. The product is supplied ready for use. **DO NOT THIN.** Clean with water.

Marmoran LENATAFOIL is a Specialised Designer Product.

Due to the complex nature of the application of this product, and the demand for the highest standard of application and finish, Marmoran LENATAFOIL should only be applied by an experienced Applicator.

A Marmoran Technical Advisor should be consulted on any matter regarding the use and or application of this product.

- **Apply** 1 even coat of the appropriate **Marmoran Primer** and allow to cure. We recommend the use of a primer such as Marmoran Universal Primer where the substrate is non porous or dense (i.e. off shutter concrete) followed by Marmoran RBP Textured Acrylic Primer.
- Apply the Marmoran Lenatafoil Basecoat with a Marmoran Hopper Spray Gun. While wet, and after 5 minutes to allow primary flash off, the texture is rolled flat using a plastic roller wet with mineral turpentine.
- Once the coating has cured, **apply Marmoran Metallica** to match the approved colour & pattern of Marmoran Sample Panel. **Refer to PDIS on Marmoran Metallica application.**
- This system must be applied in strict conformance to manufacturer's instructions.

SPECIFICATION

NEW WORK

Prepare the substrate appropriately to ensure that the surface is clean, dry and sound.

Inspect the substrate: The plaster substrate must conform to a smooth and even finish. This can be achieved with a fine wood float or we recommend a steel float finish. Adequate time should be allowed for it to cure [confirm a moisture reading of <15%: this may take from 7-21 days, depending on weather conditions] prior to the application.

Apply 1 coat of Marmoran RBP Acrylic Primer. Spray apply the Marmoran Lenatafoil Basecoat [ASTM E96 Compliant:

Marmoran

The Architects' Choice

LENATAFOIL

Controlled water vapour permeability], followed by Marmoran Metallica to match the approved colour & pattern of **Marmoran Sample Panel Reference Number: S/_____**.

REDECORATION

Prepare by removing all loose and flaking paint, dirt, grease and grime. Spot prime exposed substrates appropriately. Proceed as for new work.

PRODUCT DATA OF BASECOAT

Composition Inert Pigments Fillers and additives dispersed in an Acrylic copolymer resin.
Solvent Type Water
Solids **Volume** 69% ± 2% **Mass** 83% ± 2%
VOC LEVEL **18g/L [1.32%] The GREEN SEAL STANDARD is 150g/L [11.5%] for non flat coatings.**

Drying Times @ 25 deg C, 65% RH **Surface Dry:** 2 hours **Hard Dry:** 12-16 hours. **Over coating Time:** 12-24 hours
Higher temperatures will accelerate the drying times (± halved for every 10 °C increase)
Lower temperatures will retard the drying times (± doubled for every 10 °C decrease)
Theoretical Spread rate Textured 2-3 kg / m² Smooth 2.5 kg / m²
This figure is indicative, and subject to applicator skill and substrate type and condition. Actual spread rates must be determined by the Applicator.

Shelf life & Storage 6 - 8 Months in unopened containers. Store in a cool dry and well ventilated place away from excessive heat or an open flame. Do not allow to freeze.

Transport Non- hazardous in accordance with Transportation and Classification of Dangerous Goods Act (1996)

Handling & Safety This product is water based and non-toxic. Keep out of reach of children. It does contain chemicals that may be irritants to mammalian tissue. Appropriate protective clothing must be worn. Protect eyes and skin from exposure. If the product is being sprayed, ensure adequate ventilation and ensure the use of proper ventilated masks. Wash spillages immediately with water. Do not induce vomiting if swallowed. Consult a physician if irritation of skin persists or if product is ingested. Gather up environmental spillages, and dispose of in accordance with regulations of the local authorities.

Disclaimer All information contained herein is given in good faith, based on our specialised knowledge and experience. We reserve the right to effect changes to product and specification alike in the interest of product development and improving technology.