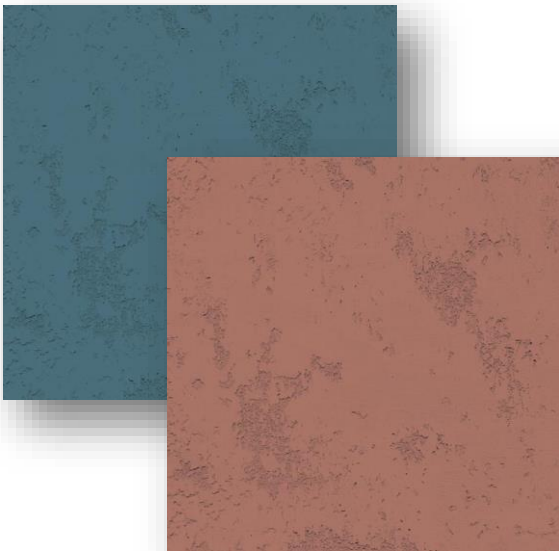


# Marmoran

The Architects' Choice

## LUNAR PITTED

DESIGNER COLLECTION  
DECORATIVE MARBLE PLASTER



### PRODUCT INFORMATION

- A decorative marble plaster coating of unique texture and colour.
- Suitable for interior use on either new or previously painted walls that have been properly prepared.
- May be sealed with a glaze to further enhance and protect.
- Eco friendly, water based, LOW VOC LEVEL [15g/L]
- Made to order, supplied ready to use.
- Combination of trowel & stipple roller application.



SA National Enquiries: 0861 627 266

[www.marmoran.co.za](http://www.marmoran.co.za)

B-BBEE COMPLIANT

© COPYRIGHT 2008:

No part of this document may be reproduced by any means unless express written permission has been granted by MARMORAN (Pty) South Africa.

International enquiries: +27 21 797 4250

Email: [info@marmoran.co.za](mailto:info@marmoran.co.za)

11.12.2019

# Marmoran

The Architects' Choice

## LUNAR PITTED

PRODUCT CODE AS028

PRODUCT DATA

### PRODUCT DESCRIPTION

Marmoran Lunar Pitted Finish is a decorative marble plaster coating of unique texture and colour.

Marmoran Lunar Pitted Finish can be over coated with a Marmoran Glaze to render the coating more washable.

### FEATURES & BENEFITS

- Extremely tough and durable
- outstanding flexible qualities
- superior alkali resistance
- excellent weather and ultraviolet resistance
- controlled water vapour permeability enabling the substrate to "breathe"
- superior adhesion to all suitably primed substrates
- excellent impact and abrasion resistance
- rapid drying properties in both low and high temperatures
- water-based, low odour
- non-hazardous, non-toxic, environment friendly
- **LOW VOC LEVEL**

### USES

- Designed for interior and exterior use on a variety of suitably prepared and primed substrates.

### COLOUR

- Available in all colours.

### AVAILABILITY

- Made to order.

### PACKAGING

- Marmoran Lunar Pitted Finish is supplied in 8 and 32 kg containers.

### GENERAL CONSIDERATION REGARDING APPLICATION

#### APPLICATION CRITERIA

- Please refer to our notes on **BEST PRACTICES FOR SURFACE PREPARATION**.
- **Inspect the substrate:** The plaster substrate must conform to a smooth and even finish. This can be achieved with a fine wood float or we recommend a steel float finish.
- The product must be applied in strict accordance to the Manufacturer's System and Specification.
- **Prepare the substrate** appropriately to ensure that the surface is clean, dry and sound.
- **Batch control** it is the responsibility of the contractor to ensure colour consistency. It is recommended that sufficient material to complete the project be ordered where possible to eliminate possible colour variation. Where this is not practical, sufficient material to complete an elevation should be ordered with any excess used as the first coat on the subsequent elevation.
- **Check** spread rates, tools and patterning.
- The product is **supplied ready for use. DO NOT THIN.**

# Marmoran

The Architects' Choice

## LUNAR PITTED

### PANEL SIZES AND JOINTING

**(Please note this specification is for tape joints only and not for structural joints.)**

- **Tape Joints** should ideally create panels of not larger than 20m<sup>2</sup>. If panels are larger, the applicator cannot guarantee consistency in the finish as it becomes increasingly difficult to “keep a wet edge”.
- **Standard tape joint specifications:** Instate tape joints in approved colour as per marked up elevations using plumb lines and a builder's level. Ensuring that all specifications are strictly adhered to. Apply 1 coat Marmoran RBP or RLP primer, followed by 2 coats of Marmoran Marmoclad pure acrylic in bands of 75mm to approved architectural layout prior to the application of the specified Marmoran topcoat.
- Allow the correct drying time, 12 to 24 hours, of the Marmoclad between coats. Ensure the second coat of Marmoclad has fully cured before covering with the masking tape.
- Apply the correct size masking tape over the cured topcoat of Marmoclad.
- Re-prime either side of the masking tape over the Marmoclad.
- Apply the finishing coat
- After one hour peel off the masking tape carefully and tidy edges

#### General notes:

1: Tape joints are available in standard masking tape sizes: 12mm, 18mm, 24mm, 36mm, 48mm.

2: Tape joints can be instated for aesthetics or to create a feature and to keep panels to a more manageable size. We suggest keeping panels smaller than 20m<sup>2</sup> but each product has varying properties so we suggest consulting with the Marmoran sales on a project by project bases.

**Marmoran Lunar Pitted Finish is a Specialised Designer Product. Due to the complex nature of the application of this product, and the demand for the highest standard of application and finish, Marmoran Lunar Pitted Finish should only be applied by an experienced Applicator. A Marmoran Technical Advisor should be consulted on any matter regarding the use and or application of this product.**

- Prepare substrate by removing all loose and friable particles. Stop and fill appropriately. Ensure that the surface is clean, dry and sound (see Marmoran Surface Preparation notes)
- Apply 1 coat of Marmoran RBP Acrylic Primer or Marmoran RLP Acrylic Primer (depending on colour) and allow to cure. The primer should be tinted to the same colour as the Marmoran Lunar Pitted Finish to ensure evenness of appearance.
- Using a steel trowel, apply a thin scrapper coat of Marmoran Lunar Pitted Finish, allow to cure.
- Apply another coat by steel trowel to 1.00 mm-1.5 mm thickness and then, roll over the coating in an upward motion using a stipple roller.
- Before the coating is completely dry, float the coating with a clean and moist steel trowel to polish.
- **If required** apply an even coating of **Marmoran Glaze.[Consult the relevant TDS]**  
The system must be applied in strict conformance to the manufacturer's instructions.

# Marmoran

The Architects' Choice

## LUNAR PITTED

### SPECIFICATION FOR MARMORAN LUNAR PITTED FINISH

#### NEW WORK

**Prepare the substrate** appropriately to ensure that the surface is clean, dry and sound.

**Inspect the substrate:** The plaster substrate must conform to a smooth and even finish. This can be achieved with a fine wood float or we recommend a steel float finish. Adequate time should be allowed for it to cure [confirm a moisture reading of <15%: this may take from 7-21 days, depending on weather conditions] prior to the application.

**Apply 1 even coat** of the appropriate **Marmoran Primer**

**Apply the Marmoran Lunar Pitted Finish** [ASTM E96 Compliant: Controlled water vapour permeability] to match the approved colour and pattern of **Marmoran Sample Panel Reference Number: S/\_\_\_\_\_**.

**If required** apply an even coating of **Marmoran Glaze**.

#### REDECORATION

Prepare by removing all loose and flaking paint, dirt, grease and grime. Spot prime exposed substrate appropriately. Proceed as for new work.

#### PRODUCT DATA

**Composition** Acrylic copolymer resin, additives, marble aggregate.

**Solvent Type** Water

**Solids** **Volume** 77% ± 2% **Mass** 57% ± 2%

**VOC LEVEL** 15g/L [0.80%] white, pastel & medium colours.

**The GREEN SEAL STANDARD is 150g/L [11.5%] for non-flat coatings.**

**Drying Times** **Surface Dry:** 4 hours **Hard Dry:** 12 hours. **Over coating Time:** 12-16hours

**@ 25 deg C,** Higher temperatures will accelerate the drying times (± halved for every 10 ° C increase)

**65% RH** Lower temperatures will retard the drying times (± doubled for every 10 ° C decrease)

**Theoretical** 1-1.5 kg / m<sup>2</sup>

**Spread rate** This figure is indicative, and subject to applicator skill and substrate type and condition.

Actual spread rates must be determined by the Applicator.

**Shelf life & Storage** 6 - 8 Months in unopened containers. Store in a cool dry and well ventilated place away from excessive heat or an open flame. Do not allow to freeze.

**Transport** Non-hazardous in accordance with Transportation and Classification of Dangerous Goods Act (1996)

**Handling & Safety** This product is water based and non-toxic. Keep out of reach of children. It does contain chemicals that may be irritants to mammalian tissue. Appropriate protective clothing must be worn. Protect eyes and skin from exposure. If the product is being sprayed, ensure adequate ventilation and ensure the use of proper ventilated masks. Wash spillages immediately with water. Do not induce vomiting if swallowed. Consult a physician if irritation of skin persists or if product is ingested. Gather up environmental spillages, and dispose of in accordance with regulations of the local authorities.

**Disclaimer** All information contained herein is given in good faith, based on our specialised knowledge and experience. We reserve the right to effect changes to product and specification alike in the interest of product development and improving technology.