

Marmoran

The Architects' Choice

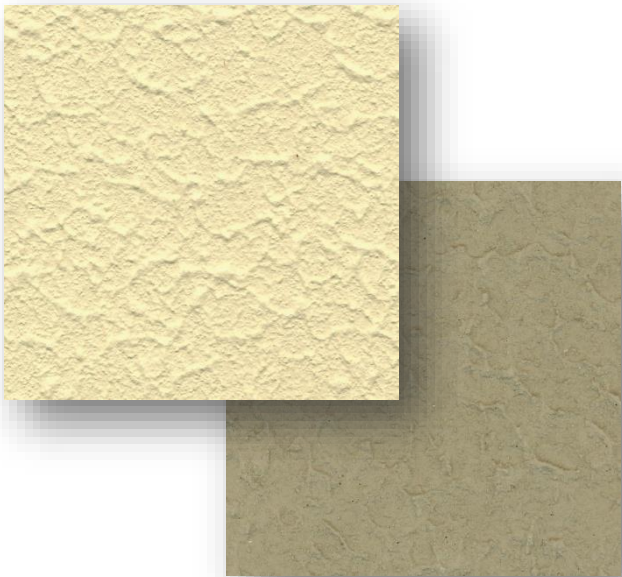
ROLON

A SUPERIOR HIGH BUILD TEXTURED COATING THAT HIDES SURFACE IMPERFECTIONS



PRODUCT INFORMATION

- Suitable for interior or exterior use as a protective & decorative coating on either new or previously painted walls that have been properly prepared.
- High build effectively hides surface imperfections.
- A durable and seamless elastomeric coating that is flexible and provides excellent crack bridging properties.
- Accentuate design elements through imaginative paneling and the creation of contrasting bands. We strongly recommend the use tape joints to create paneling and so to avoid dry joints, this is particularly important when applying the product over a large area.
- Eco friendly, water based, LOW VOC LEVEL [46g/L]
- Made to order, supplied ready to use.



MARMORAN GUARANTEE

MARMORAN 10 YEAR PRODUCT GUARANTEE is issued on condition that the system is applied by a Marmoran Licensed Applicator in strict accordance to the full specification and is accepted and signed by the relevant parties. Due to the demand for the highest standard of application and finish, it must be applied by a trained applicator that is skilled and experienced.

SA National Enquiries: 0861 627 266

www.marmoran.co.za

B-BBEE COMPLIANT

© COPYRIGHT 2008:

No part of this document may be reproduced by any means unless express written permission has been granted by MARMORAN (Pty) South Africa.

International enquiries: +27 21 797 4250

Email: info@marmoran.co.za

11.12.2019

Marmoran

The Architects' Choice

ROLON

PRODUCT CODE AS011
SHEET

PRODUCT DATA INFORMATION

PRODUCT DESCRIPTION

Marmoran Rolon is a pigmented high build textured protective and decorative coating for both interior and exterior use containing marble dust. Marmoran Rolon provides a durable and seamless elastomeric finish.

Marmoran Rolon is based on a proprietary acrylic polymer of outstanding quality, rendering the coating flexible and providing excellent crack bridging properties. Further, the high build texture effectively hides surface imperfections. If required, the coating may be sealed with a protective Marmoran Glaze.

TESTED TO NATIONAL & INTERNATIONAL STANDARDS BY THREE INDEPENDENT LABORATORIES

TEST STANDARDS

SABS 1586:2007

- Controlled water vapour permeability allows the walls to "breathe" to maintain resistance to water ingress and prevent spalling, delamination, algae and dirt retention.
- Exceptional weathering, water repellency and ultraviolet resistant properties
- Ability to withstand high temperatures with no signs of delamination, blistering or loss of adhesion

SANS 5175 Easily cleaned up to 10,000 scrubs without exhibiting wear or signs or loss of adhesion

CGRI/R+H Superior quality pure acrylic resin ensures resistance to dirt pickup

ASTM 4060 Tough & durable with high resistance to abrasion & scuffing

ASTM G53 UV resistant to prevent excessive chalking, colour change, flaking or peeling

ISO 1519 Exhibits outstanding flexible qualities, yet hard and durable to withstand the stresses of natural expansion and contraction of the substrate

ISO 2409 Superior adhesion to all suitably primed substrates

SABS 5146 Excellent impact resistance and tensile strength

SABS 1227 Crack bridging properties to span cracks of less than 1 mm

USES

- Designed for interior or exterior use as a protective and decorative coating for a wide variety of new or previously coated surfaces that have been suitably prepared. This includes cement plasters, concrete, fibre cement, ceiling boards, off shutter concrete, highly porous surfaces, gypsum.

COLOUR

- Tinted to a wide range of colours

AVAILABILITY

- Made to order. Supplied ready for use. DO NOT THIN.

PACKAGING

Packed in 5, 20 and 200 L containers

GENERAL CONSIDERATION REGARDING APPLICATION

SITE SURVEY REPORTS

Site Survey Reports and Records are to be completed prior to product application, during the application and on completion of the project so that the relevant documentation is available for processing the Guarantee.

Marmoran

The Architects' Choice

ROLON

CLIMATIC CONDITIONS

Adequate protection should be provided against rain and sub-zero temperatures for a period of not less than 24 hours after application. The coating should never be applied during adverse weather conditions, or on wet surfaces. Even if the weather seems fit, there may be condensation if the temperature of the substrate is at or below the dew point (temperature at which the atmospheric humidity condenses e.g. as dew) the product should only be applied when the temperature of the substrate is at least 2 deg C above dew point. In hot climates, the coating should be applied during the morning and late afternoon hours and if possible away from direct sunlight. Variations in temperatures will affect drying times.

APPLICATION CRITERIA

- Please refer to our notes on **BEST PRACTICES FOR SURFACE PREPARATION**.
- **Inspect the substrate:** The plaster substrate must conform to a smooth and even finish. This can be achieved with a fine wood float or we recommend a steel float finish.
- The product must be applied in strict accordance to the Manufacturer's System and Specification.
- Adequate time should be allowed for it to cure [confirm a moisture reading of <15%: this may take from 7-21 days, depending on weather conditions] prior to the application of any specialised, semi-specialised coating or paint.
- **Prepare the substrate** appropriately to ensure that the surface is clean, dry and sound.
- Ensure that the **scaffold** be positioned at a comfortable distance away from the surface so that application technique is not compromised. (400-600mm).
- **Sealing of expansion/control joints:** we recommend the use of sealant compatible with the specified Marmoran product, a suitable Marmoran Primer may then be applied directly over these joints.
- We strongly recommend the use **tape joints** to create paneling and so to **avoid dry joints**.
- **Batch control** it is the responsibility of the contractor to ensure colour consistency. It is recommended that sufficient material to complete the project be ordered where possible to eliminate possible colour variation. Where this is not practical, sufficient material to complete an elevation should be ordered with any excess used as the first coat on the subsequent elevation.
- **Check** spread rates, tools and patterning.
- The product is **supplied ready for use. DO NOT THIN**.

APPLICATION METHOD

Supplied ready for use. Mix gently with a flat paddle before and during application. Do not use a mechanical mixer as this could over develop the colour. Clean with water.

Application tools: lambs-wool or stipple roller – depending on the preferred pattern. The lamb's wool roller has a more "open and flatter" pattern, while the stipple roller gives a more "dense" finish.

- **Apply 1** even coat of the appropriate **Marmoran Primer** and allow to cure. We recommend the use of a primer such as Marmoran Universal Primer where the substrate is non porous or dense (i.e. off shutter concrete) followed either by Marmoran RBP Textured Acrylic Primer or Marmoran RLP Textured Acrylic Primer where there is a distinct colour difference between the **Marmoran Rolon** and the surface to be coated.
- **Apply 2 coats Marmoran Rolon** to match the Approved colour & pattern of Marmoran Sample Panel.

It is recommended that two Applicators work together on the same area. The first applicator spreads the material evenly by **crosshatching with the roller** and **while wet**, the second applicator **applies the next coat** using a **saturated roller**, first **crosshatching** and then rolling in the same direction to obtain the **preferred finish**.

Allow for drying time between coats.

Marmoran

The Architects' Choice

ROLON

SPECIFICATION FOR MARMORAN ROLON SYSTEM

NEW WORK

Prepare the substrate appropriately to ensure that the surface is clean, dry and sound.

Inspect the substrate: The plaster substrate must conform to a smooth and even finish. This can be achieved with a fine wood float or we recommend a steel float finish. Adequate time should be allowed for it to cure [confirm a moisture reading of <15%: this may take from 7-21 days, depending on weather conditions] prior to the application.

Apply 1 even coat of the appropriate **Marmoran Primer**.

Apply 2 coats of Marmoran Rolon [SABS 1586:2007 Compliant: Controlled Water Vapour Permeability] as per Marmoran's recommended application method to match the approved colour & pattern of **Marmoran Sample Panel**

Reference Number: S/ _____

This Marmoran Coating System Has A 10 Year International Guarantee Underwritten By A Third Party.

It is issued on condition that it has been applied by a Marmoran Licensed Applicator in strict accordance to the full specification and is accepted and signed by the relevant parties. Due to the demand for the highest standard of application and finish, it must be applied by a trained applicator that is skilled and experienced.

REDECORATION

Prepare the surface by removing all loose and flaking paint, dirt, grease and grime. Make good all cracks and defects and then repair and prime to match the existing surface. Proceed as for new work.

PRODUCT DATA

Composition Inert Pigments, Fillers and special additives dispersed in a fine particle size pure acrylic resin.

Solvent Type Water

Solids **Volume** 60% ± 2% **Mass** 75% ± 2%

VOC LEVEL 46g/L [2.88%] white, pastel & medium colours.

The GREEN SEAL STANDARD is 150g/L [11.5%] for non-flat coatings.

Drying Times **Surface Dry:** 2 hours **Hard Dry:** 12-16 hours **Over coating:** 12 hours

@ 25 deg C, Higher temperatures will accelerate the drying times (±halved for every 10 °C increase)

65% RH Lower temperatures will retard the drying times (°doubled for every 10 °C decrease)

Theoretical 2 m²- 2.5 m²/L /coat [2 coats]

Spread rate **Wet Film Thickness:** 500 µ per coat **Dry Film Thickness:** 300 µ per coat

This figure is indicative, and subject to applicator skill and substrate type and condition.

Actual spread rates must be determined by the Applicator.

Shelf life & Storage 6 - 8 Months in unopened containers. Store in a cool dry and well ventilated place away from excessive heat or an open flame. Do not allow to freeze.

Transport Non-hazardous in accordance with Transportation and Classification of Dangerous Goods Act (1996)

Handling & Safety This product is water based and non-toxic. Keep out of reach of children. It does contain chemicals that may be irritants to mammalian tissue. Appropriate protective clothing must be worn. Protect eyes and skin from exposure. If the product is being sprayed, ensure adequate ventilation and ensure the use of proper ventilated masks. Wash spillages immediately with water. Do not induce vomiting if swallowed. Consult a physician if irritation of skin persists or if product is ingested. Gather up environmental spillages, and dispose of in accordance with regulations of the local authorities.

Disclaimer All information contained herein is given in good faith, based on our specialised knowledge and experience. We reserve the right to effect changes to product and specification alike in the interest of product development and improving technology.