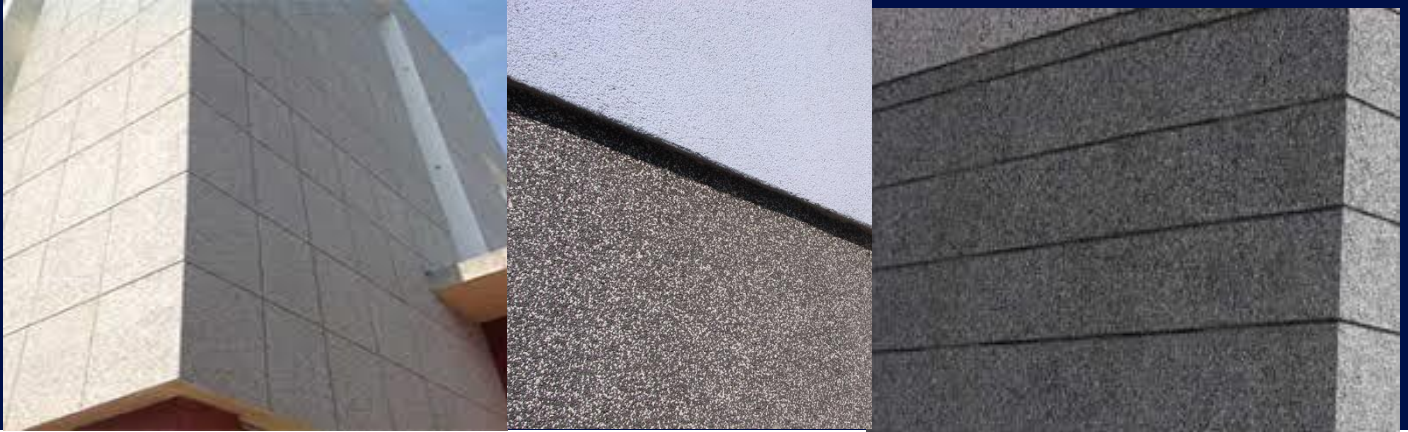


# Marmoran

The Architects' Choice

## STONE FINISH

*AGGREGATES ARE EMBEDDED INTO A RESIN BONDED BACKGROUND PLASTER TO ACHIEVE A HIGHLY ATTRACTIVE AND EXTREMELY DURABLE COATING.*



### PRODUCT INFORMATION

- Suitable for interior or exterior use on either new or previously painted walls that have been properly prepared.
- Available in variants of 4.8mm, 3.2mm, 1.5mm & 1.0mm.
- An infinite array of colours to choose from by combining natural and tinted aggregates.
- Accentuate design elements through imaginative paneling and the creation of contrasting bands.
- Sealed with a glaze to further enhance and protect.
- Eco friendly, water based, LOW VOC LEVEL.
- Made to order, supplied ready to use.
- Trowel and spray application.

### MARMORAN GUARANTEE

**MARMORAN 15 YEAR PRODUCT GUARANTEE** is issued on condition that the system is applied by a Marmoran Licensed Applicator in strict accordance to the full specification and is accepted and signed by the relevant parties. Due to the demand for the highest standard of application and finish, it must be applied by a trained applicator that is skilled and experienced.



SA National Enquiries: 0861 627 266

[www.marmoran.co.za](http://www.marmoran.co.za)

B-BBEE COMPLIANT

© COPYRIGHT 2008:

No part of this document may be reproduced by any means unless express written permission has been granted by MARMORAN (Pty) South Africa.

International enquiries: +27 21 797 4250

Email: [info@marmoran.co.za](mailto:info@marmoran.co.za)

11.12.2019

# Marmoran

The Architects' Choice

## STONE FINISH

PRODUCT CODE AS018

PRODUCT DATA INFORMATION SHEET

### FEATURES & BENEFITS

- covers surface imperfections, enabling use over irregular surfaces

### TESTED TO NATIONAL & INTERNATIONAL STANDARDS BY THREE INDEPENDENT LABORATORIES TEST STANDARDS

|                   |   |
|-------------------|---|
| <b>ASTM D4828</b> | Easily cleaned up to 10,000 scrubs without exhibiting wear or signs or loss of adhesion   |
| <b>CGRI/R+H</b>   | Superior quality pure acrylic resin ensures resistance to dirt pickup   |
| <b>ASTM 4060</b>  | Tough & durable with high resistance to abrasion & scuffing   |
| <b>ASTM G53</b>   | UV resistant to prevent excessive chalking, colour change, flaking or peeling   |
| <b>ISO 1519</b>   | Exhibits outstanding flexible qualities, yet hard and durable to withstand the stresses of natural expansion and contraction of the substrate                           |
| <b>ASTM E96</b>   | Controlled water vapour permeability allows the walls to "breathe" to maintain resistance to water ingress and prevent spalling, delamination, algae and dirt retention |
| <b>ISO 2409</b>   | Superior adhesion to all suitably primed substrates   |
| <b>SABS 170</b>   | Excellent resistance to alkali salts to prevent coating delamination and adhesion   |
| <b>SABS 1586</b>  | Ability to withstand high temperatures with no signs of delamination, blistering or loss of adhesion  |
| <b>SABS 146</b>   | Excellent impact resistance and tensile strength  |
| <b>ISO 12040</b>  | Exceptional weathering, water repellency and ultraviolet resistant properties   |

### USES

- Designed for interior or exterior use on a wide variety of new or previously coated surfaces that have been suitably prepared and primed. This includes cement plasters, concrete, fibre cement, ceiling boards, off shutter concrete, highly porous surfaces and gypsum.
- This particularly suitable to accentuate design elements of a structure through imaginative paneling and the creation of contrasting bands

### COLOUR

- An infinite array of colours to choose from by combining natural and tinted aggregates.

### PACKAGING

- Background Plaster is packed in 8, 32 and 300 kg containers
- Aggregates are supplied in 40 and 300 kg containers

### GENERAL CONSIDERATION REGARDING APPLICATION

#### SITE SURVEY REPORTS

Site Survey Reports and Records are to be completed prior to product application, during the application and on completion of the project so that the relevant documentation is available for processing the Guarantee.

#### CLIMATIC CONDITIONS

Adequate protection should be provided against rain and sub-zero temperatures for a period of not less than 24 hours after application. The coating should never be applied during adverse weather conditions, or on wet surfaces. Even if the weather seems fit, there may be condensation if the temperature of the substrate is at or below the dew point (temperature at which the atmospheric humidity condenses e.g. as dew) the product should only be applied when the temperature of the substrate is at least 2 deg C above dew point. In hot climates, the coating should be applied during the morning and late afternoon hours and if possible, away from direct sunlight. Variations in temperatures will affect drying times.

SA National Enquiries: 0861 627 266

[www.marmoran.co.za](http://www.marmoran.co.za)

B-BBEE COMPLIANT

© COPYRIGHT 2008:

No part of this document may be reproduced by any means unless express written permission has been granted by MARMORAN (Pty) South Africa.

International enquiries: +27 21 797 4250

Email: [info@marmoran.co.za](mailto:info@marmoran.co.za)

11.12.2019

# Marmoran

The Architects' Choice

## STONE FINISH

### APPLICATION CRITERIA

- Please refer to our notes on **BEST PRACTICES FOR SURFACE PREPARATION**.
- **Inspect the substrate:** The plaster substrate must conform to a smooth and even finish. This can be achieved with a fine wood float or we recommend a steel float finish.
- The product must be applied in strict accordance to the Manufacturer's System and Specification.
- Adequate time should be allowed for it to cure [confirm a moisture reading of <15%: this may take from 7-21 days, depending on weather conditions] prior to the application of any specialised, semi-specialised coating or paint.
- **Prepare the substrate** appropriately to ensure that the surface is clean, dry and sound.
- Ensure that the **scaffold** be positioned at a comfortable distance away from the surface so that application technique is not compromised. (400-600mm).
- **Sealing of expansion/control joints:** we recommend the use of sealant compatible with the specified Marmoran product, a suitable Marmoran Primer may then be applied directly over these joints.
- We strongly recommend the use **tape joints** to create paneling and so to **avoid dry joints**.
- **Batch control** it is the responsibility of the contractor to ensure colour consistency. It is recommended that sufficient material to complete the project be ordered where possible to eliminate possible colour variation. Where this is not practical, sufficient material to complete an elevation should be ordered with any excess used as the first coat on the subsequent elevation.
- **Check** spread rates, tools and patterning.
- The product is **supplied ready for use. DO NOT THIN**.

### PANEL SIZES AND JOINTING

**(Please note this specification is for tape joints only and not for structural joints)**

- **Tape Joints** should ideally create panels of not larger than 20m<sup>2</sup>. If panels are larger, the applicator cannot guarantee consistency in the finish as it becomes increasingly difficult to "keep a wet edge".
- **Standard tape joint specifications:** Instate tape joints in approved colour as per marked up elevations using plumb lines and a builder's level. Ensuring that all specifications are strictly adhered to. Apply 1 coat Marmoran RBP or RLP primer, followed by 2 coats of Marmoran Marmoclad pure acrylic in bands of 75mm to approved architectural layout prior to the application of the specified Marmoran topcoat.
- Allow the correct drying time, 12 to 24 hours, of the Marmoclad between coats. Ensure the second coat of Marmoclad has fully cured before covering with the masking tape.
- Apply the correct size masking tape over the cured topcoat of Marmoclad.
- Re-prime either side of the masking tape over the Marmoclad.
- Apply the finishing coat
- After one-hour peel off the masking tape carefully and tidy edges

# Marmoran

The Architects' Choice

## STONE FINISH

### General notes:

1: Tape joints are available in standard masking tape sizes: 12mm, 18mm, 24mm, 36mm, 48mm.

2: Tape joints can be instated for aesthetics or to create a feature and to keep panels to a more manageable size. We suggest keeping panels smaller than 20m<sup>2</sup> but each product has varying properties, so we suggest consulting with the Marmoran sales on a project by project bases.

### APPLICATION METHOD

- **Apply** an even coat of the appropriate **Marmoran Primer** and allow to cure. We recommend the use of a primer such as Marmoran Universal Primer where the substrate is nonporous or dense (i.e. off shutter concrete) followed by Marmoran RBP Textured Acrylic Primer.
- **Apply** the **Marmoran Background Plaster** by steel trowel, metre to a constant coating thickness, and while wet, cast in the **Marmoran Aggregate**. Lightly **roll** the Aggregate into the Background Plaster to maximize embedment. Allow the coating to cure.
- **Recommended: Apply** 1 or 2 coats of **Marmoran Universal Glaze** [for Interior] OR 2 or 3 coats of **Marmoran Glaze 15** [for Exterior] to seal and protect the coating. Crosshatch so as to achieve obliteration.

### SPECIFICATION FOR MARMORAN STONE FINISH SYSTEM

#### NEW WORK

**Prepare the substrate** appropriately to ensure that the surface is clean, dry and sound.

**Inspect the substrate:** The plaster substrate must conform to a smooth and even finish. This can be achieved with a fine wood float or we recommend a steel float finish. Adequate time should be allowed for it to cure [confirm a moisture reading of <15%: this may take from 7-21 days, depending on weather conditions] prior to the application

**Apply an even coat** of the appropriate **Marmoran Primer**. **Apply** the **Marmoran (4.8, 3.2, 1.5 or 1.0 - please select) mm Stone Finish System** [ASTM E96 Compliant: Controlled Water Vapour Permeability] to **match the approved Marmoran Sample Panel Reference Number: S/\_\_\_\_\_**. **If required apply** an even coating of **Marmoran Glaze**. **This Marmoran Coating System Has 15 Year International Guarantee Underwritten By A Third Party**. It is issued on condition that it has been applied by a Marmoran Licenced Applicator in strict accordance to the full specification and is accepted and signed by the relevant parties. Due to the demand for the highest standard of application and finish, it must be applied by a trained applicator that is skilled and experienced

#### REDECORATION

Prepare by removing all loose and flaking paint, dirt, grease and grime. Make good all cracks and defects, then repair and prime to match the existing surface. Proceed as for new work.

# Marmoran

The Architects' Choice

## STONE FINISH

### PRODUCT DATA

**Composition** Background Plaster Inert Pigments, Marble Aggregate & Fillers dispersed in a pure acrylic resin.

**Solvent Type** Water

**Solids** **Volume** 75% ± 2% **Mass** 84% ± 2%

**VOC LEVEL** 18g/L 1% The International GREEN SEAL STANDARD is 150g/L [11.5%] for non-flat coatings

**Drying Times** **Surface Dry:** 2 hours **Hard Dry:** 12 hours **Over coating Time:** 12 hours  
**@ 25 deg C, 65% RH** Higher temperatures will accelerate the drying times (approximately halved for every 10 deg C increase)  
Lower temperatures will retard the drying times (approximately doubled for every 10 deg C decrease)

### Stone Finish

|  |        |   |  |
|--|--------|---|--|
| <b>Theoretical Spread rate Per m<sup>2</sup></b> | 1.0 mm | 2.0 kg / m <sup>2</sup> of 1.0 mm <b>Background Plaster Aggregate</b> | 3.0 kg / m <sup>2</sup> of <b>1.0 mm Stone</b> |
|  | 1.5 mm | 2.5 kg / m <sup>2</sup> of 1.5 mm <b>Background Plaster Aggregate</b> | 4.0 kg / m <sup>2</sup> of <b>1.5 mm Stone</b> |
|  | 3.2 mm | 3.0 kg / m <sup>2</sup> of 2.0 mm <b>Background Plaster Aggregate</b> | 6.0 kg / m <sup>2</sup> of <b>3.2 mm Stone</b> |
|  | 4.8mm  | 3.8 kg / m <sup>2</sup> of 3.0 mm <b>Background Plaster Aggregate</b> | 8.0 kg / m <sup>2</sup> of <b>4.8 mm Stone</b> |

This figure is indicative, and subject to applicator skill and substrate type and condition. Actual spread rates must be determined by the Applicator.

6 - 8 Months in unopened containers. Store in a cool dry and well-ventilated place away from excessive heat or an open flame. Do not allow to freeze.

### Shelf life & Storage

**Transport** Non-hazardous in accordance with Transportation and Classification of Dangerous Goods Act (1996)

### Handling & Safety

This product is water based and non-toxic. Keep out of reach of children. It does contain chemicals that may be irritants to mammalian tissue. Appropriate protective clothing must be worn. Protect eyes and skin from exposure. If the product is being sprayed, ensure adequate ventilation and ensure the use of proper ventilated masks. Wash spillages immediately with water. Do not induce vomiting if swallowed. Consult a physician if irritation of skin persists or if product is ingested. Gather up environmental spillages and dispose of in accordance with regulations of the local authorities.

# *Marmoran*

The Architects' Choice

## STONE FINISH

**Disclaimer** All information contained herein is given in good faith, based on our specialised knowledge and experience. We reserve the right to effect changes to product and specification alike in the interest of product development and improving technology.