

Treadwell

With Treadtile tiles, what's good for the environment is also good for the most challenging indoor applications. In fact, this durable, slip-resistant flooring meets ADA recommendations for ramps, making it ideal for foyers, exercise facilities and stairways. Made from recycled tires, using state-of-the-art recycling technology our Treadwell mats are low maintenance and very durable. Comfortable to walk on, sturdy enough to withstand the heaviest wear. Treadtile tiles offer both durability and rugged good looks.





Treadwell

Entrance floor tile made from recycled materials

- Exceptionally durable nylon carpet.
- Tiles can be installed in recessed matwells.
- Manufactured from recycled tyres.
- Looks stylish when laid in uniform or parquet.
- Pattern complements an array of interiors.

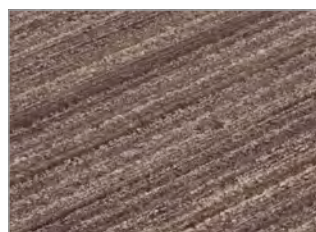


Technical Specification

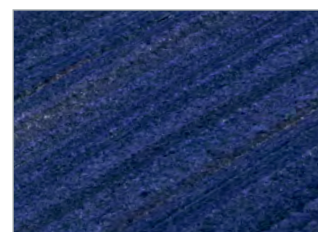
Material:	100% Recycled rubber tyre and belt material
Backing:	Non-flammable solid adhesive base
Surface Finish:	Buffed, chenille-like nylon
Product Height:	10mm
Product Performance:	Conforms to Slip Resistance Dry >1, Wet 0.98 (per ASTM F1677)
Flame Retardency:	Radiant panel, M3 (per NFP 92-506)
Tensile Strength:	Longitudinal > 1500 psi
Weight:	0.75 kg/tile
Colours:	Brown and Blue
Application:	Suitable indoor and outdoor recessed application
Cleaning Method:	Brush and vacuum on regular basis
Country of Origin:	India

Size	Brown	Blue
30 x 30 x 1cm (Pkt 10)	TW050001BR	TW050001BLU

Colour Options



Brown



Blue