

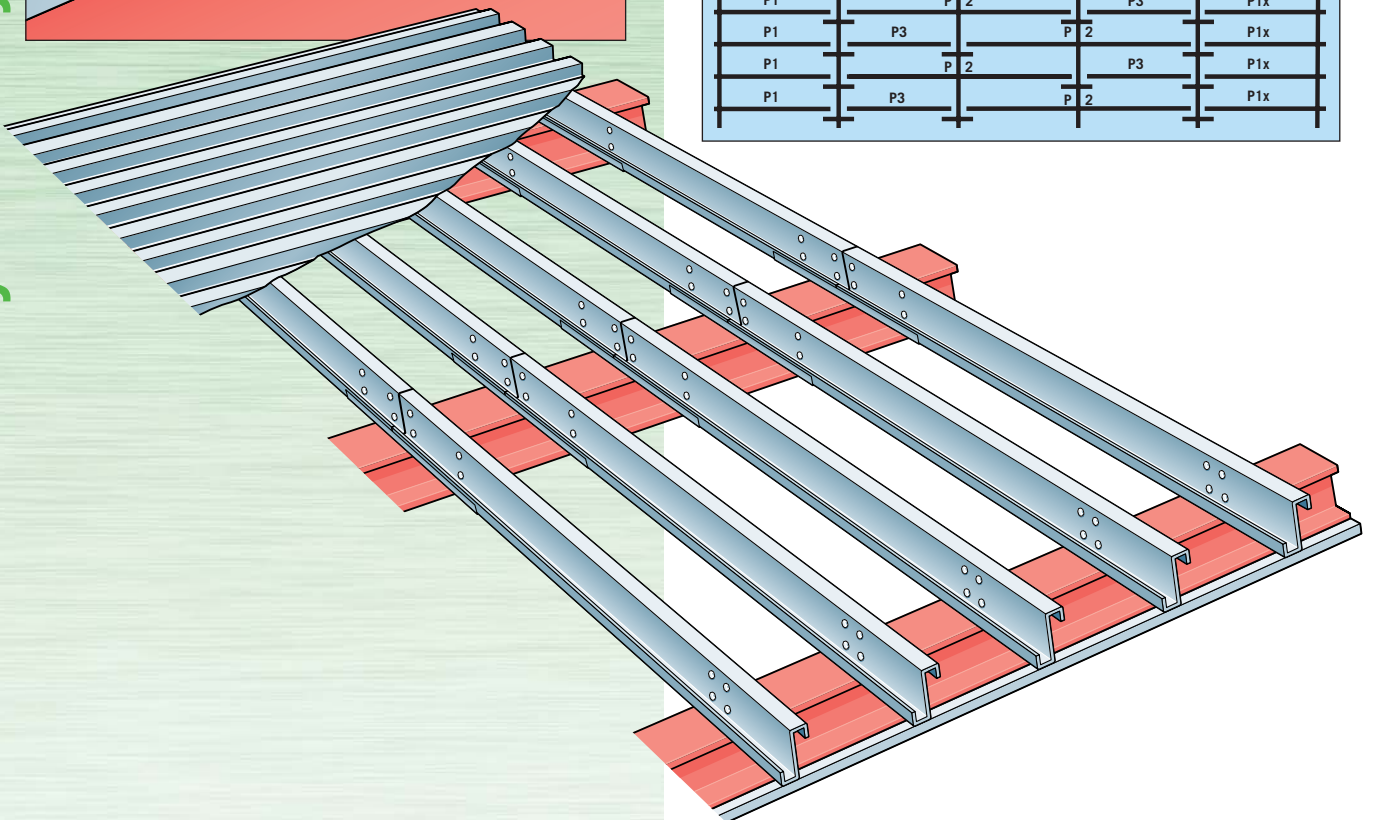
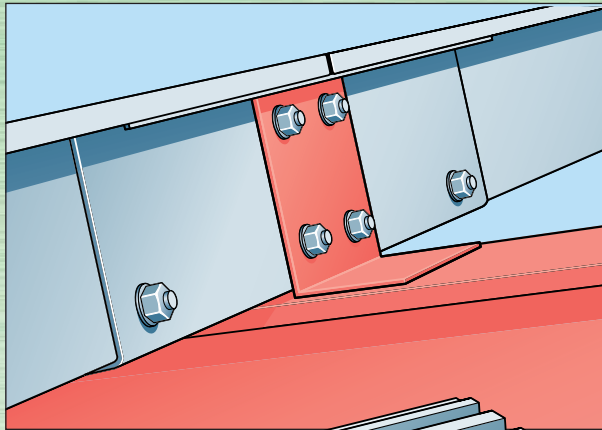
## Zed Sleeved Purlin System 2 Bays and Over where Heavy End Bay System\* is precluded

Roof purlins for buildings with 2 bays and over, up to and including 25° roof pitch.

The sleeved system optimises the use of steel by incorporating sleeves at the penultimate rafter with a staggered sleeving arrangement on internal bays. The sleeved system caters for spans up to 15m depending on the load to be applied and where the cladding or liner tray offers adequate lateral support by virtue of its fixing, ie fixed according to the cladding manufacturer's instructions.

To enable the purlin and sleeve to nest together the sleeve is inverted. For full cleat details see page 52.

**Computer controlled production techniques apply the client's individual mark numbers to all purlins automatically during the manufacturing process.**



\* Lighter purlins can be fitted on internal bays when a Heavy End Bay System is adopted (see page 12)

### Single Span System

Single span lengths can be supplied to suit individual requirements.

Penultimate rafter connections are sleeved with a staggered sleeving arrangement on internal bays.

Typical single span arrangement indicating purlin and sleeve positions.

P1	P4	P4x	P3	P1x
P1	P3	P4	P4x	P1x
P1	P4	P4x	P3	P1x
P1	P3	P4	P4x	P1x
P1	P4	P4x	P3	P1x
P1	P3	P4	P4x	P1x

### Double Span System

End bay purlins are single span, with double span purlins on internal bays.

The maximum span between rafters is 7.5m therefore maximum double span length is 15m. Consideration must be given to the handling of longer lengths.

A sleeve must always occur at a joint position.

Typical double span arrangement indicating purlin and sleeve positions.

P1	P 2	P3	P1x
P1	P3	P 2	P1x
P1	P 2	P3	P1x
P1	P3	P 2	P1x
P1	P 2	P3	P1x
P1	P3	P 2	P1x

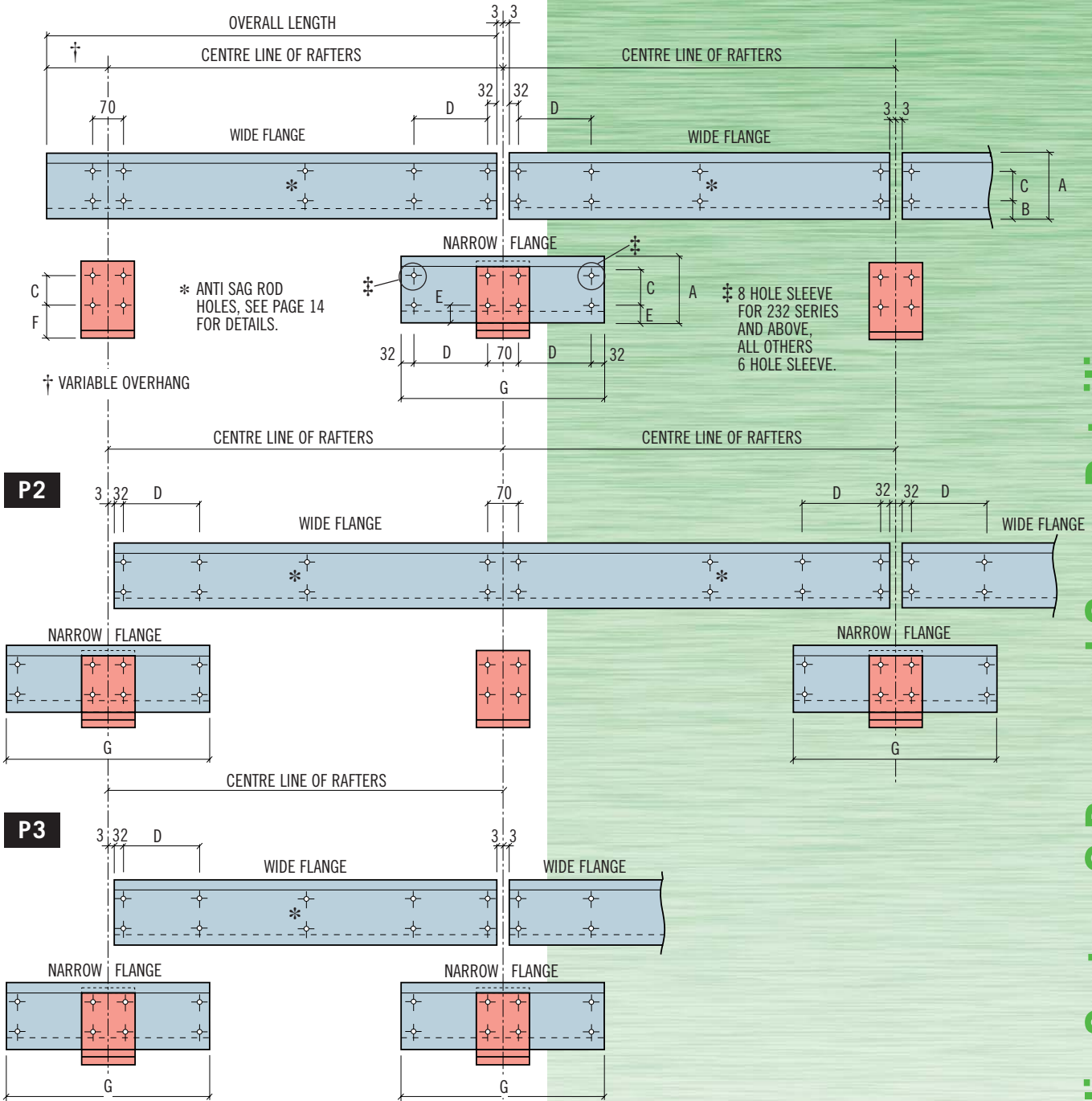
See opposite for individual mark number details

\* Lighter purlins can be fitted on internal bays when a Heavy End Bay System is adopted (see page 12)

## Zed Sleeved Purlin System 2 Bays and Over where Heavy End Bay System\* is precluded

### P1 and P1X (opposite hand)

### P4 and P4X (opposite hand)



SLEEVED SYSTEM						
Detailing Dimensions in mm						
A	B	C	D	E	F	G
142	42	56	240	44	50	614
172	42	86	290	44	50	714
202	42	116	350	44	50	834
232	42	146	410	44	50	954
262	42	176	460	44	50	1054
302	52	195	610	55	60	1354
342	52	235	760	55	60	1654

### General Detailing Information

- All web holes 18mm diameter for M16 bolts.
- All dimensions in millimetres.
- Clearance between purlins at all joints is 6mm.
- All holes are pierced in pairs on standard gauge lines.
- For full cleat details see page 52.