



REVELSTONE

the alternative to real stone®



Designed by nature, crafted with passion

CATALOGUE 2024

PARTNER WITH PROVEN QUALITY



The PPC SURERANGE has six specifically formulated cement products specific for all your building needs. PPC is dedicated to providing its customers with hardworking 100% local, 100% quality premium products ensuring quality in every build.

Want to know more? Visit www.ppc.africa

0800 236 368 | www.ppc.africa @PPC_Africa PPC Ltd



The Revelstone Story

3



Our Product Showcase

- Pavers	4
- Tiles	12
- Cobbles	18
- Cladding	24
- Devon Cappings	32
- Coping	38
- Landscape Products	42

Recent Commercial Projects	50
----------------------------	----

Product Technical Information	54
-------------------------------	----

Colours & Textures	56
--------------------	----

Product Layouts	58
-----------------	----

www.revelstone.co.za



Nanoprufe



Revelstone was founded in August 1993 by Andrew Cyprianos.

He identified a niche in both domestic and commercial markets for customised cast stone products and REVELSTONE was born!

From small beginnings in an underground cellar in Muizenberg, the reputation for innovative products and personalised service rapidly spread, catapulting Revelstone to the market leader it is today.

Our core business has always been focused on Product Development, Innovation, Quality and Client Service. We are continuously developing and improving our products to keep up with the latest global trends.

Our products are almost indistinguishable from natural stone- Attention to detail, subtle variations in colour, variety of surface textures and shape of the stone are necessary in order to create an authentic cast stone replica.

Our R+D team, headed by Andrew, uses traditional masonry skills combined with a modern moulding technique to pain-stakingly reproduce an original master, this is then used to create a mould. We have gained a reputation for being the obvious choice when specialized or customized products are required.

Natural stone products are becoming more expensive and less environmentally friendly, as they are generally imported. Revelstone products are becoming the obvious choice of industry professionals and home owners alike as the only true alternative to real stone.

A visit to the Revelstone showroom which is continually being upgraded, expanded and enhanced is an absolute must. The showroom has been designed for the homeowner and professional alike. The Revelstone experience has been further enhanced by the introduction of a coffee bar where clients can enjoy a quiet cup of coffee in an attractive, serene outdoor courtyard.

The result of the company's ongoing investment and innovation is a world class, cast stone product which can be used as an alternative to real stone.



Revelstone Team 2023



PAVERS

RANDOM EDGE & STRAIGHT EDGE



RAVINE STRAIGHT EDGE PAVERS - 3 SIZES



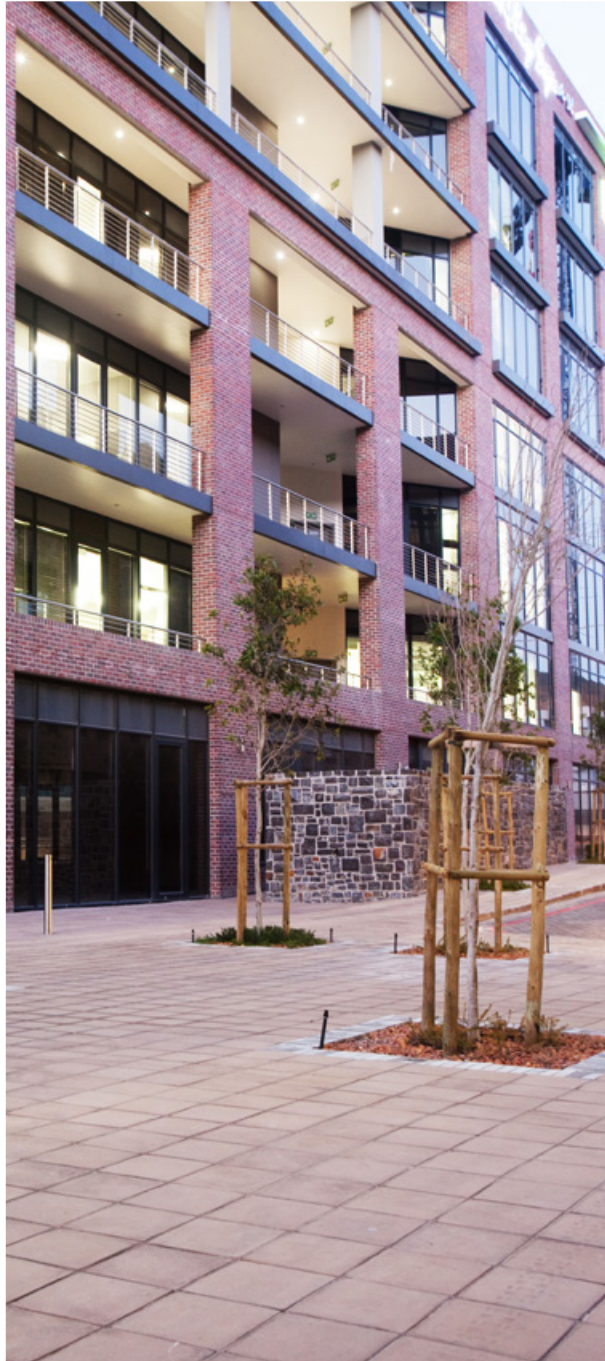
JURA STRAIGHT EDGE PAVERS



RAVINE STRAIGHT EDGE PAVERS



KENT RANDOM EDGE PAVERS



JURA STRAIGHT EDGE PAVERS



JURA STRAIGHT EDGE PAVERS



KLOMPIE BRICK PAVERS



KENT RANDOM EDGE PAVERS



KENT RANDOM EDGE PAVERS



DEVON PAVERS

PAVERS - RANDOM EDGE & STRAIGHT EDGE



KENT RANDOM EDGE PAVERS



KENT RANDOM EDGE PAVERS



DEVON PAVERS



KLOMPIE PAVERS



KENT RANDOM EDGE PAVERS



KENT RANDOM EDGE PAVERS



KENT RANDOM EDGE PAVERS



KLOMPIE AND DEVON STEP PAVERS



KENT RANDOM EDGE PAVERS



RIDGESTONE PAVERS



KENT RANDOM EDGE PAVERS



JURA STRAIGHT EDGE PAVERS



KENT RANDOM EDGE PAVERS



KENT STRAIGHT EDGE PAVERS



KENT RANDOM EDGE PAVERS - MIXED SIZES



JURA STRAIGHT EDGE PAVERS



KENT RANDOM EDGE PAVERS



JURA HEXAGON PAVERS



KENT RANDOM EDGE PAVERS



RAVINE RANDOM EDGE PAVERS - MIXED SIZES



JURA STRAIGHT EDGE PAVERS



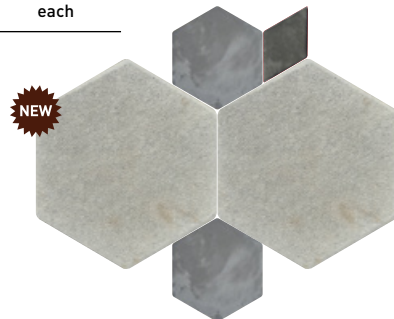
KLOMPIE BRICK PAVERS



VIKING STEP PAVERS

STRAIGHT EDGE PAVERS

PRODUCT	SIZE	UNITS PER SQM-R/M	KG PER UNIT	UNIT OF MEASURE
Ravine Straight Edge Paver	220 x 220 x 45	20	4.6	each
Ravine Straight Edge Paver	440 x 220 x 45	10	9	each
Ravine Straight Edge Paver	440 x 440 x 45	4.7	20	each
Ravine Straight Edge Paver	680 x 440 x 45	3.3	28	each
3 SIZES: 220 x 220 440 x 220 440 x 440		+/- 0.355	95	sqm
4 SIZES: 220 x 220 440 x 220 440 x 440 680 x 440		+/- 0.661	95	sqm
Ravine Straight Edge Paver	300 x 300 x 45	11	8	each
Kent Straight Edge Paver	300 x 400 x 55	8.3	14	each
Kent Straight Edge Paver	500 x 500 x 45	4	25	each
Jura Straight Edge Paver	300 x 300 x 45	11	9	each
Jura Straight Edge Paver	440 x 440 x 45	5	19	each
Jura Straight Edge Paver	680 x 440 x 45	3.3	28	each
Jura Straight Edge Paver	300 x 300 x 80	11	16	each
Jura Hexagon Paver	220 x 220 x 45	25	4	each
Jura Hexagon Paver	440 x 440 x 45	6	16	each
Jura Hexagon Filler Paver	Diamond Filler	77	1.3	each



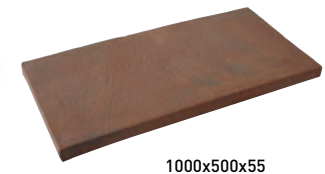
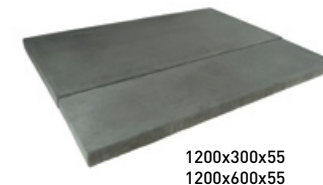
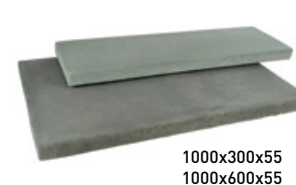
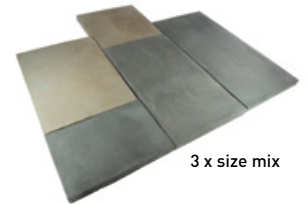
STRAIGHT EDGE PAVERS

PRODUCT	SIZE	UNITS PER SQM-R/M	KG PER UNIT	UNIT OF MEASURE
Devon Paver - Etched Texture	600 x 600 x 60	-	49	each
Devon Paver - Etched Texture	900 x 600 x 60	-	83	each
Devon Paver - Etched Texture	900 x 900 x 60	-	120	each
Devon Paver - Etched Texture	1000 x 1000 x 60	-	140	each
Devon Paver - Etched Texture	1800 x 600 x 60	-	195	each



RANDOM EDGE PAVERS

PRODUCT	SIZE	UNITS PER SQM-R/M	KG PER UNIT	UNIT OF MEASURE
Kent Random Edge Paver	400 x 600 x 55	4.1	29	each
Kent Random Edge Paver	600 x 600 x 55	2.7	42	each
Kent Random Edge Paver	800 x 600 x 55	2.1	56	each
Kent Random Edge Paver	1000 x 500 x 55	2	62	each
Kent Random Edge Paver	1000 x 300 x 55	3.3	34	each
Kent Random Edge Paver	1000 x 600 x 55	1.6	71	each
Kent Random Edge Paver	1200 x 300 x 55	2.7	44	each
Kent Random Edge Paver	1200 x 600 x 55	1.3	87	each



*(50mm gap)

RANDOM EDGE PAVERS

PRODUCT	SIZE	UNITS PER SQM-R/M	KG PER UNIT	UNIT OF MEASURE
Ravine Random Edge Paver	220 x 220 x 45	20	4.6	each
Ravine Random Edge Paver	440 x 220 x 45	10	9	each
Ravine Random Edge Paver	440 x 440 x 45	4.7	20	each
Ravine Random Edge Paver	680 x 440 x 45	3.3	28	each
3 SIZES*: 220 x 220 440 x 220 440 x 440		+/- 0.386	88	sqm
4 SIZES*: 220 x 220 440 x 220 440 x 440 680 x 440		+/- 0.709	88	sqm



York Random Edge Paver	250 x 250 x 48	16	5.5	each
York Random Edge Paver	500 x 250 x 48	8	10	each
York Random Edge Paver	500 x 500 x 48	4	22	each
York Random Edge Paver	750 x 500 x 48	2.75	35	each
3 SIZES*: 250 x 250 500 x 250 500 x 500		3x 3x 2x	88	sqm
4 SIZES*: 250 x 250 500 x 250 500 x 500 750 x 500		2x 2x 1x 1x	88	sqm



Viking Step Paver	1000 x 500 x 60	2	85	each
-------------------	-----------------	---	----	------



Ridgestone Paver	1200 x 500 x 50	-	82	each
------------------	-----------------	---	----	------



Ravine Crazy Paving	Mixed random sizes 45mm	85	-	
---------------------	-------------------------	----	---	--



*[50mm gap]

KLOMPIE PAVERS - 75MM

PRODUCT	SIZE	UNITS PER SQM-R/M	KG PER UNIT	UNIT OF MEASURE
Klompie Brick Paver	225 x 35 x 75	100	130	sqm



Corner piece now available



STEP PAVERS - 75MM

PRODUCT	SIZE	UNITS PER SQM-R/M	KG PER UNIT	UNIT OF MEASURE
Devon Step - Etched Texture	1500 x 375 x 75	-	93	each
Devon Step - Etched Texture	1500 x 500 x 75	-	130	each
Devon Step - Etched Texture	1500 x 625 x 75	-	160	each



1500 x 625 x 75



Edge profile - splayed

TILES

STANDARD, BULLNOSE,
BRICK & COBBLE TILES



RAVINE TILES



KENT BRICK TILES



RAVINE TILES



RAVINE TILES



KLOMPIE TILES



RAVINE TILES - 3 SIZE MIX



DEVON TILES



JURA TILES



RAVINE TILES



RAVINE TILES



KLOMPIE TILE CLADDING



DEVON COBBLE TILES



DEVON TILES



KLOMPIE TILES



RAVINE BULLNOSE TILES



KENT TILES



JURA TILES



RAVINE TILES



RAVINE BULLNOSE TILES



KLOMPIE BRICK AND TILES



DEVON TILE



KLOMPIE TILE



KLOMPIE TILE CLADDING



RAVINE TILES



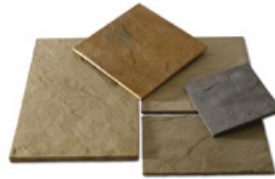
KLOMPIE TILES



KENT TILES

TILES

PRODUCT	SIZE	UNITS PER SQM-R/M	KG PER UNIT	UNIT OF MEASURE
Ravine Tile	300 x 300 x 15	11	38	sqm
Ravine Tile	440 x 440 x 15	4.8	34	sqm
Ravine Tile	500 x 500 x 20	4	43	sqm
Ravine Tile	680 x 440 x 20	3.3	47	sqm
Ravine Tile	750 x 500 x 25	2.7	52	sqm
3 SIZES: 440 x 440 440 x 215 215 x 215		3x 3x 3x	32	sqm
Kent Tile	500 x 500 x 20	4	45	sqm
Kent Tile	600 x 600 x 20	2.8	60	sqm
Kent Tile	750 x 500 x 20	2.7	52	sqm
Kent Brick Tile	200 x 60 x 20	82	40	sqm
Jura Tile	440 x 440 x 20	5.1	43	sqm
Jura Tile	680 x 440 x 20	3.3	48.5	sqm
Devon Tile - Etched Texture	700 x 310 x 30	-	15	each
Devon Tile - Etched Texture	700 x 385 x 30	-	19	each
Devon Tile - Etched Texture	900 x 600 x 30	-	37	each
Klompie Brick Tile Cladding	225 x 35 x 30	100	60	sqm
COMING SOON: Klompie Smooth Cut Tile Cladding	225 x 35 x 15	100	60	sqm



Corner
piece now
available



BULLNOSE TILES

PRODUCT	SIZE	UNITS PER SQM-R/M	KG PER UNIT	UNIT OF MEASURE
Ravine Bullnose Tile	300 x 300 x 22	3.3	4.5	each
Ravine Bullnose Tile	440 x 440 x 22	2.3	10.7	each
Ravine Bullnose Tile	500 x 300 x 22	2	7.2	each
Ravine Bullnose Tile Outside Cnr	300 x 300 x 22	-	4.5	each
Ravine Bullnose Tile Outside Cnr	440 x 440 x 22	-	10.5	each
Ravine Double Bullnose Tile	500 x 300 x 22	2	7.2	each
Kent Bullnose Tile	600 x 400 x 20	1.67	10.3	each
Kent Bullnose Tile	500 x 400 x 20	2	8.5	each



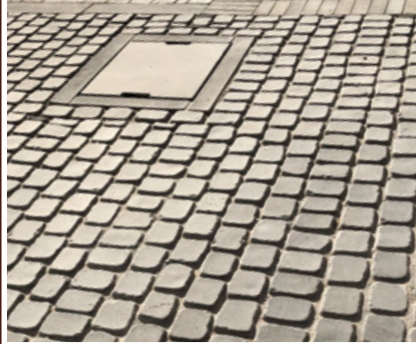
COBBLES TILES

PRODUCT	SIZE	UNITS PER SQM-R/M	KG PER UNIT	UNIT OF MEASURE
Devon Cobble Tile	110 x 110 x 15	81	41	sqm
Kent Cobble Tile	150 x 150 x 20	44	42	sqm



COBBLES

50MM & 75MM



TRENT COBBLES - 50mm



KENT COBBLES - 50mm



KENT AND JURA COBBLES - 50mm



KENT COBBLES - DROSTDY HOTEL, GRAAFF-REINET - 50mm



KENT COBBLES AND KLOMPIE PAVERS



KENT COBBLES - 50mm



JURA AND KENT COBBLES - ERINVALLE HOTEL - 50mm



KENT COBBLES - 50mm

COBBLES



KENT COBBLES - SACS HIGH SCHOOL - 50mm



JURA COBBLES - STATION HOUSE - 75mm



KENT COBBLE - 50mm



TRENT COBBLE - 50mm



JURA COBBLES - 50mm



DEVON COBBLES - SILO HOTEL - 75mm



RIDGESTONE COBBLE - 50mm



KENT COBBLES - 50mm



JURA AND KENT COBBLES - 50mm



DEVON COBBLES - 75mm



JURA COBBLES - 50mm



TUSCAN COBBLE - 3 x SIZE - 50mm



KENT AND TRENT COBBLES - 50mm



JURA COBBLES - 50mm

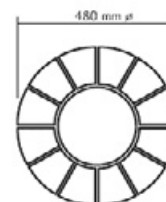
COBBLES 50MM

PRODUCT	SIZE	UNITS PER SQM-R/M	KG PER UNIT	UNIT OF MEASURE
Jura Cobble	225 x 65 x 50	68	110	sqm
Kent Cobble	110 x 110 x 50	81	110	sqm
Kent Cobble	200 x 150 x 50	33	110	sqm
Kent Cobble NEW	200 x 200 x 50	25	110	sqm
Kent Cobble - 2 Sizes	110 x 110 x 50 200 x 200 x 50	20x 20x	- -	units units
Ridgestone Cobble - 2 Sizes	110 x 110 x 50 150 x 150 x 50	29x 29x	- -	units units
Ridgestone Cobble	150 x 150 x 50	44	110	sqm
Trent Cobble	100 x 80 x 50	110	95	sqm
Exeter Cobble	110 x 110 x 48	81	89	sqm
Tuscan Cobble - 3 Sizes	-	32x 33x 33x	121	sqm
Tuscan Cobble	70 x 70 x 55	200	120	sqm
Tuscan Cobble	145 x 70 x 55	100	120	sqm
Tuscan Cobble	215 x 70 x 55	66	124	sqm



COBBLES CIRCLE - 60MM

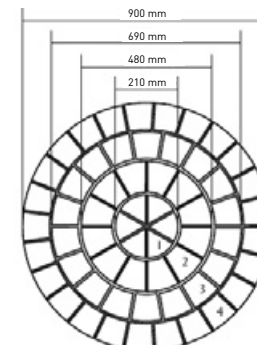
PRODUCT	SIZE	UNITS PER SQM-R/M	KG PER UNIT	UNIT OF MEASURE
Devon Cobble Circle Solid Ctr	0.21ø	-	5.5	each
Devon Cobble Circle Centre No.1	0.21ø	6x	4.8	each
Devon Cobble Circle Ring No.2	0.48ø	12x	14.4	each
Devon Cobble Circle Ring No.3	0.69ø	18x	21.6	each
Devon Cobble Circle Ring No.4	0.90ø	25x	50	each



Solid Centre



Ring No.1 and Ring No.2



Complete Circle

COBBLES 75MM

PRODUCT	SIZE	UNITS PER SQM-R/M	KG PER UNIT	UNIT OF MEASURE
Jura Cobble	225 x 65 x 75	68	165	sqm
Devon Cobble	110 x 110 x 75	81	160	sqm
COMING SOON: Kent Cobble	200 x 200 x 75	25	160	sqm



CLADDING



VIKING RANDOM CLADDING



VIKING COUNTRY CLADDING



KLOMPIE CLADDING



VIKING - 6 SIZE CLADDING



OFF SHUTTER CLADDING



WORCESTER SPLIT CLADDING



KLOMPIE CLADDING



VIKING RANDOM CLADDING



WORCESTER SPLIT CLADDING



OXFORD WOOD CLADDING



COTSWOLD CLADDING



OXFORD OFF SHUTTER CLADDING



RIDGESTONE CLADDING 12 SIZE MIX



WORCESTER SPLIT CLADDING - CAPE TOWN INTERNATIONAL AIRPORT



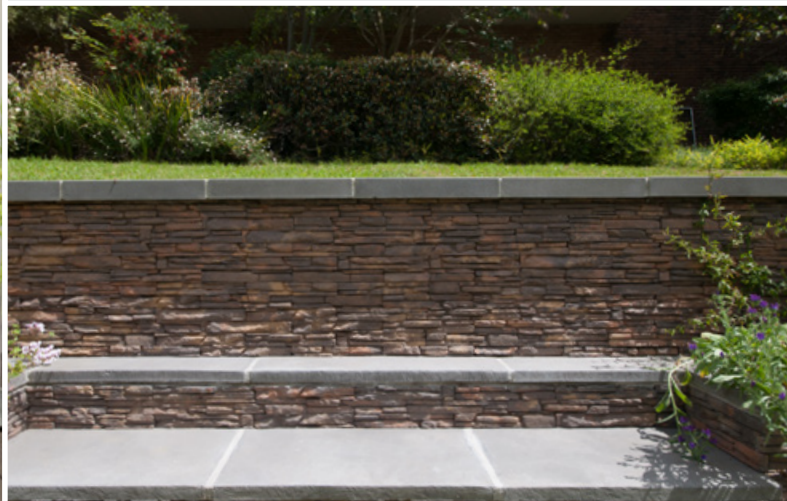
SAXON SPLIT CLADDING



KLOMPIE CLADDING - VIDA É CAFE'S



RAVINE SPLIT CLADDING



SAXON SPLIT CLADDING - THE BAXTER THEATRE



WORCESTER SPLIT CLADDING



VIKING - 3 SIZE CLADDING - UITSIG WINERY



RIDGESTONE RANDOM CLADDING



RIDGESTONE - 12 SIZE CLADDING



VIKING - 3 SIZE CLADDING



OFF SHUTTER CLADDING



NEW

VIKING - 4 SIZE CLADDING



RIDGESTONE RANDOM CLADDING



BRICK TILE CLADDING



SAXON SPLIT CLADDING



VIKING RANDOM CLADDING



VIKING SPLIT CLADDING



SAXON SPLIT CLADDING

CLADDING

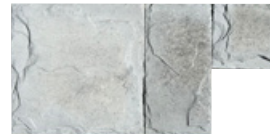
PRODUCT	SIZE	UNITS PER SQM-R/M	KG PER UNIT	UNIT OF MEASURE
Klompie Brick Cladding	225 x 35 x 30	100	60	sqm
Brick Tile Cladding	225 x 35 x 30	62	60	sqm
Worcester Split Cladding	500 x 45 x 40	approx. 44	77	sqm
Worcester Split Cladding Corners	random mix	25	17	r/m
Ravine Split Cladding	500 x 60 x 30	33	53	sqm
Viking Split Cladding	400 x 40 x 30	approx. 63	65	sqm
Saxon Split Cladding	400 x 65 x 20	34	60	sqm
Oxford Off Shutter	1000 x 250 x 25	4	14	sqm*
Oxford Off Shutter	1000 x 500 x 25	2	29	sqm*

*Sizes not compatible



CLADDING

PRODUCT	SIZE	UNITS PER SQM-R/M	KG PER UNIT	UNIT OF MEASURE
Oxford Wood Tile Cladding	1000 x 200 x 23	5	48	sqm
Viking Cladding 3 Size	(Approx. Mix)	8x6x6x	37	Sqm
Viking Cladding	150 x 150 x 25mm	44	-	Sqm
Viking Cladding	300 x 150 x 25mm	22	-	Sqm
Viking Cladding	300 x 300 x 25mm	11	-	Sqm
Viking Cladding 4 Size	(Approx. Mix)	15x15x8x8x	40	Sqm
Viking Cladding	100 x 100 x 25mm	100	-	Sqm
Viking Cladding	100 x 200 x 25mm	50	-	Sqm
Viking Cladding	100 x 300 x 25mm	33	-	Sqm
Viking Cladding	200 x 200 x 25mm	25	-	Sqm
Viking Cladding 6 Size	(Approx. Mix)	5x7x3x3x3x3x	67	Sqm
Viking Cladding	100 x 100 x 20	100	60	Sqm
Viking Cladding	100 x 200 x 20	50	65	Sqm
Viking Cladding	200 x 200 x 20	25	60	Sqm
Viking Cladding	200 x 300 x 20	16.7	70	Sqm
Viking Cladding	200 x 400 x 20	12.5	72	Sqm
Viking Cladding	300 x 300 x 20	11	77	Sqm
Viking Cladding Corner Set				
100 Corner x 4		0.03	2	Each
200 Corner x 3	=1R/Mt	0.08	5	Each



CLADDING

PRODUCT	SIZE	UNITS PER SQM-R/M	KG PER UNIT	UNIT OF MEASURE
Ridgestone Cladding: 12 Mixed Sizes	100/125/230 course	12x mixed	55	sqm
Ridgestone Cladding Corner	100	0.032	1.6	each
Ridgestone Cladding Corner	125	0.04	2.2	each
Ridgestone Cladding - Jumper Corner small		0.083	5.5	each
Ridgestone Cladding - Jumper Corner large		0.097	7	each
Ridgestone Corner Set		3x 2x 1x 1x	20	r/m
Viking Random Cladding	Random mix	-	87	sqm
Ridgestone Random Cladding	Random mix	-	40	sqm
Ridgestone Random Cladding Corners	Random mix	-	13	r/m
Viking Country Cladding	Random mix	-	75	sqm
Devon Pebble Cladding	Random mix	-	76	sqm
Cotswold Cladding	Random mix	-	60	sqm



DEVON CAPPINGS



DEVON CAPPING AND INSIDE CORNERS



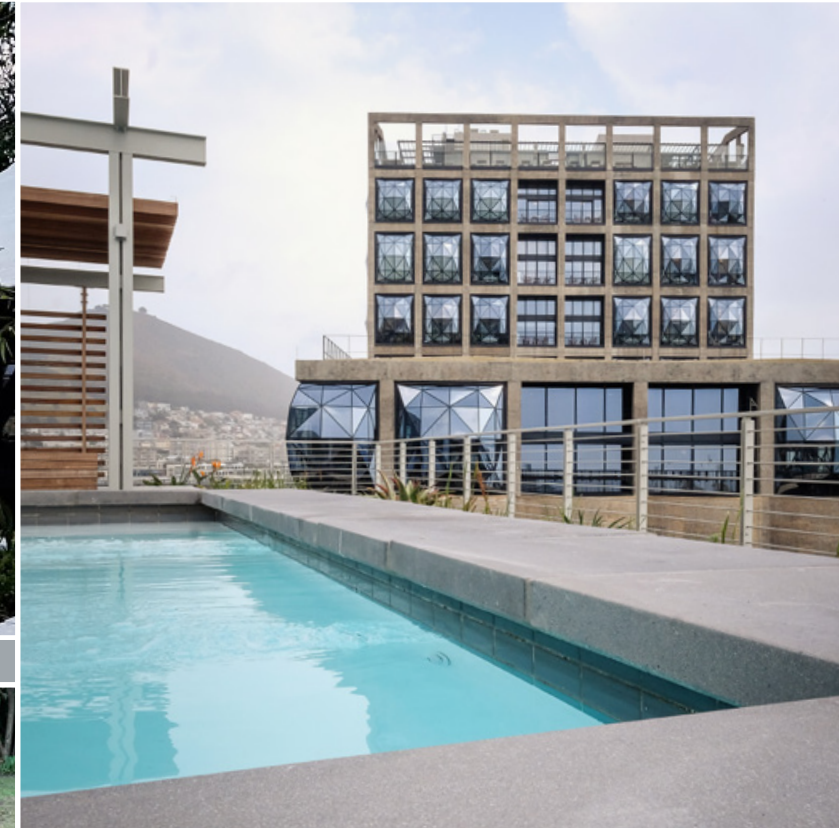
DEVON SINGLE CAPPING



DEVON SINGLE CAPPING



DEVON DOUBLE CAPPING AND INSIDE CORNERS



DEVON DOUBLE CAPPING - CUSTOM MADE - SILO PRECINCT V&A



DEVON SINGLE CAPPING



DEVON SINGLE CAPPING



DEVON DOUBLE CAPPING AND INSIDE CORNERS



DEVON DOUBLE CAPPING



DEVON DOUBLE CAPPING



DEVON DOUBLE CAPPING



DEVON SINGLE CAPPING



DEVON DOUBLE CAPPING



DEVON SINGLE CAPPING



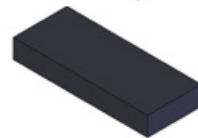
DEVON SINGLE CAPPING



DEVON DOUBLE CAPPING

WALL CAPPINGS 280mm - ETCHED TEXTURE

PRODUCT	SIZE	UNITS PER SQM-R/M	KG PER UNIT	UNIT OF MEASURE
Devon Double Wall Capping	700 x 280 x 100	1.43	18	each
Devon Single Wall Capping	700 x 280 x 100	1.43	16	each
Devon Wall Capping Stop End	500 x 280 x 100	-	17	each
Devon Wall Capping: Inside/Outside Corner Inside: 220mm	380 x 280 x 100	-	13	each
Devon Single Wall Capping: Corner - Inside Inside: 250mm	380 x 280 x 100	-	14	each
Devon Single Wall Capping: Corner - Outside Inside: 250mm	380 x 280 x 100	-	12	each



WALL CAPPINGS 330mm - ETCHED TEXTURE

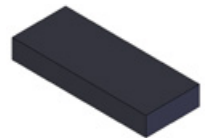
PRODUCT	SIZE	UNITS PER SQM-R/M	KG PER UNIT	UNIT OF MEASURE
Devon Single Wall Capping	700 x 330 x 160*	1.43	23	each



*160mm Downstand

WALL CAPPINGS 340mm - ETCHED TEXTURE

PRODUCT	SIZE	UNITS PER SQM-R/M	KG PER UNIT	UNIT OF MEASURE
Devon Double Wall Capping	700 x 340 x 100	1.43	23	each
Devon Single Wall Capping	700 x 340 x 100	1.43	20	each
Devon Wall Capping Stop End	500 x 340 x 100	-	18	each
Devon Wall Capping: Inside/Outside Corner Inside: 280mm	440 x 340 x 100	-	18	each
Devon Single Wall Capping: Corner - Inside Inside: 310mm	440 x 340 x 100	-	14	each
Devon Single Wall Capping: Corner - Outside Inside: 310mm	440 x 340 x 100	-	17	each



WALL CAPPINGS 390mm - ETCHED TEXTURE

PRODUCT	SIZE	UNITS PER SQM-R/M	KG PER UNIT	UNIT OF MEASURE
Devon Double Wall Capping	700 x 390 x 100	1.43	23	each
Devon Single Wall Capping	700 x 390 x 100	1.43	22	each
Devon Wall Capping Stop End	500 x 390 x 100	-	19	each
Devon Wall Capping: Inside/Outside Corner Inside: 330mm	490 x 390 x 100	-	21	each
Devon Single Wall Capping: Capping Corner - Inside Inside: 360mm	490 x 390 x 100	-	19	each
Devon Single Wall Capping: Corner - Outside Inside: 360mm	490 x 390 x 100	-	21	each



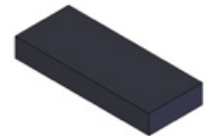
WALL CAPPINGS 450mm - ETCHED TEXTURE

PRODUCT	SIZE	UNITS PER SQM-R/M	KG PER UNIT	UNIT OF MEASURE
Devon Double Wall Capping	700 x 450 x 100	1.43	37	each
Devon Wall Capping: Inside/Outside Corner Inside: 420mm	580 x 450 x 100	-	38	each



WALL CAPPINGS 480mm - ETCHED TEXTURE

PRODUCT	SIZE	UNITS PER SQM-R/M	KG PER UNIT	UNIT OF MEASURE
Devon Double Wall Capping	700 x 480 x 100	1.43	37	each
Devon Single Wall Capping	700 x 480 x 100	1.43	26	each
Devon Wall Capping Stop End	700 x 480 x 100	-	38	each
Devon Wall Capping: Inside/Outside Corner Inside: 420mm	580 x 480 x 100	-	38	each
Devon Single Wall Capping: Corner - Inside Inside: 450mm	580 x 480 x 100	-	25	each
Devon Single Wall Capping: Corner - Outside Inside: 450mm	580 x 480 x 100	-	28	each



COPING



KLOMPIE TILES



ROMAN COPING



JURA WEDGES



ROMAN COPING



JURA PAVERS AND DEVON CAPPING



KENT COPING



RIDGESTONE CAPPING



ROMAN COPING



ROMAN COPING



JURA PAVERS AND WEDGES



ROMAN DOUBLE COPING



JURA PAVERS



JURA WEDGES - MIXED SIZES



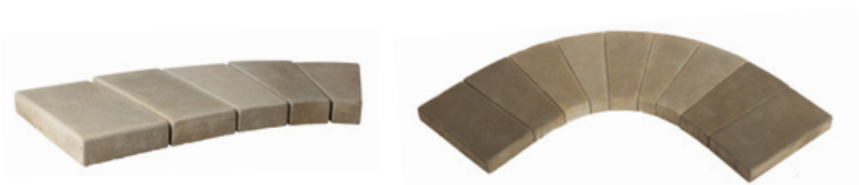
JURA PAVERS AND JURA WEDGES

COPING

PRODUCT	SIZE	UNITS PER SQM-R/M	KG PER UNIT	UNIT OF MEASURE
Roman Pool Coping	300 x 300 x 45	3.3	8.5	each
Roman Pool Coping	440 x 440 x 45	2.25	19	each
Roman Pool Coping	600 x 300 x 45	1.7	18	each
Roman Pool Coping	680 x 440 x 45	1.5	28	each
Roman Double Pool Coping	300 x 300 x 45	3.3	9	each
Roman Double Pool Coping	440 x 440 x 45	2.25	21	each
Roman Double Pool Coping	600 x 300 x 45	1.7	18	each
Roman Double Pool Coping	600 x 400 x 45	1.7	24	each
Roman Double Pool Coping	680 x 440 x 45	1.5	28	each
Roman Inside Corner Coping	300 x 300 x 45	-	12	each
Roman Inside Corner Coping	440 x 440 x 45	-	23	each
Roman Outside Corner Coping	300 x 300 x 45	-	8	each
Roman Outside Corner Coping	440 x 440 x 45	-	19	each
Roman 3 Sided Pool Coping	300 x 300 x 45	-	8	each
Roman 3 Sided Pool Coping	440 x 440 x 45	-	19	each
Roman 3 Sided Pool Coping	600 x 400 x 45	-	24	each
Kent Pool Coping	300 x 400 x 50	3.3	14	each
Kent Pool Coping	600 x 400 x 50	1.67	28	each
Kent Pool Coping	500 x 500 x 50	2	28	each



PRODUCT	SIZE	UNITS PER SQM-R/M	KG PER UNIT	UNIT OF MEASURE
Kent Inside Cnr Coping	400 x 500 x 50	-	28	each
Kent Inside Cnr Coping	500 x 600 x 50	-	28	each
Kent Outside Cnr Coping	400 x 400 x 50	-	18	each
Kent Outside Cnr Coping	500 x 500 x 50	-	18	each
Kent Double Pool Coping	500 x 500 x 50	2	28	each
Kent Double Pool Coping	600 x 600 x 50	1.67	40	each
Kent Double Inside Corner	400 x 500 x 50	-	27	each
Kent Double Inside Corner	500 x 600 x 50	-	37	each
Jura Coping	150 x 300 x 45	22	4.3	each
Jura Coping Wedge - Radius	50/150 x 300 x 45	-	3	each
Jura Coping Wedge - Radius	75/150 x 300 x 45	-	3.3	each
Jura Coping Wedge - Radius	100/150 x 300 x 45	-	3.7	each
Jura Coping Wedge - Radius	125/150 x 300 x 45	-	4	each



LANDSCAPE PRODUCTS



KENT RANDOM EDGE PAVERS



DEVON COBBLE CIRCLE



JURA EDGING UPRIGHT



KLOMPIE BRICK PAVERS



RAVINE GARDEN STEPS



YORK CIRCLE - 2.7 Ø AND VIKING STEP PAVER



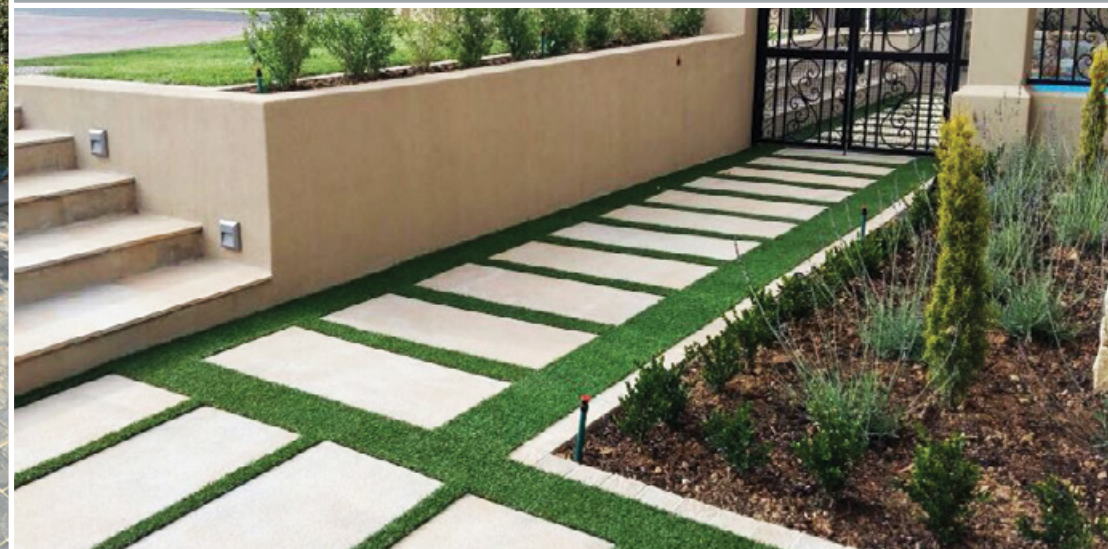
JURA EDGING AND PAVERS



RAVINE GARDEN STEP



JURA SPLOYED KERB



RIDGESTONE PAVERS



JURA FIRE PIT



SAXON STONE EDGING - 75mm



RAVINE STEPPING STONE



KENT RANDOM EDGE PAVERS AND SAXON STONE EDGING



DEVON WALL CAPPING AND CORNERS



RAVINE STEPS



DEVON PAVERS - 900mm x 900mm



KENT RANDOM EDGE PAVERS



ROMAN STEP KERB



DEVON WALL CAPPING & WORCESTER SPLIT CLADDING



JURA CIRCLE KERB - 900mm



YORK CIRCLE - 4.0 Ø



JURA FIRE PIT AND YORK CIRCLE AND SEATING



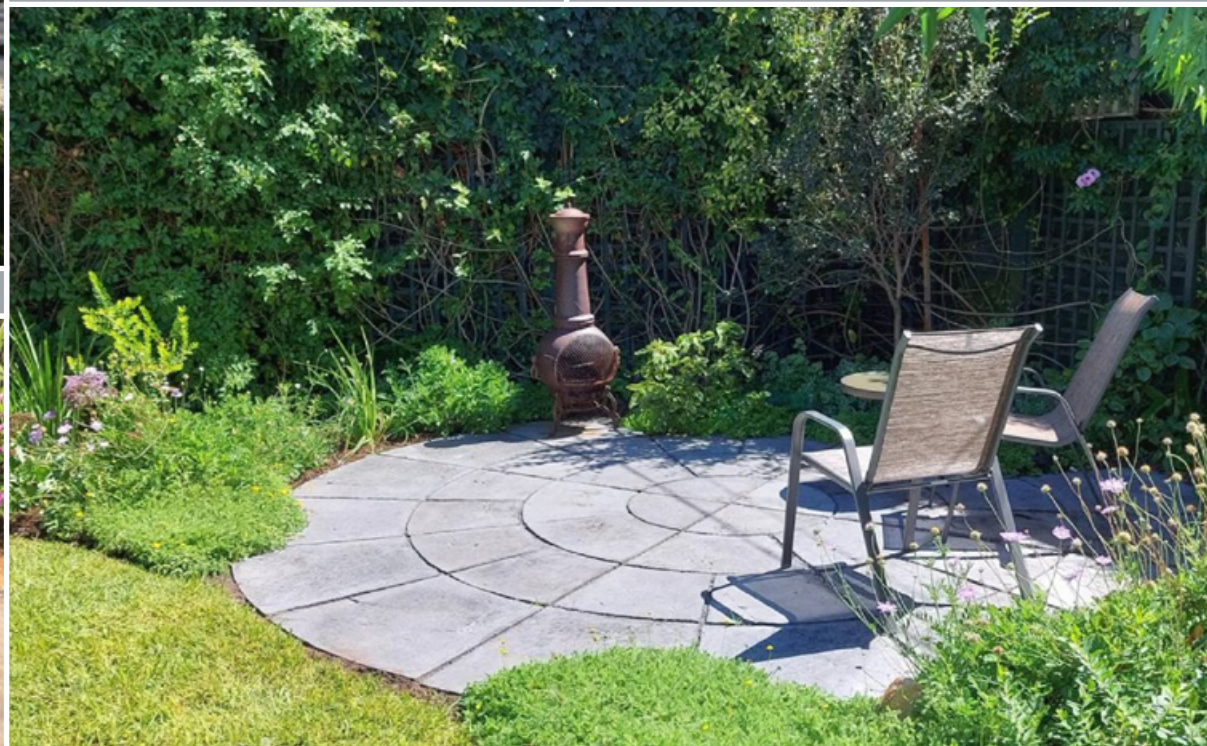
RAVINE STEPPING STONE AND SAXON STONE EDGING



PLANT HOLE PAVER - 90mm



RIDGESTONE KERBS



YORK CIRCLE - 4.0 Ø



DEMARCATON PAVER - 3 OPTIONS AVAILABLE



JURA FIRE PIT



PLANT HOLE PAVERS - KENT RANDOM EDGE PAVERS



RAVINE GARDEN STEP



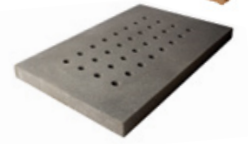
DEVON PAVERS - 1000mm x 1000mm



JURA FIRE PIT AND YORK CIRCLE A

LANDSCAPE PRODUCTS

PRODUCT	SIZE	UNITS PER SQM-R/M	KG PER UNIT	UNIT OF MEASURE
Ravine Stepping Stone	680 x 440 x 45	0.306	28	each
Saxon Stone Edging 75 - 2 Sizes	-	2x 2x	15	r/m
Saxon Stone Edging	75 x 200 x 100	5	3	each
Saxon Stone Edging	75 x 300 x 100	3.3	4.3	each
Saxon Stone Edging 100 - 2 Sizes	-	2x 2x	20	r/m
Saxon Stone Edging	100 x 200 x 100	5	4.1	each
Saxon Stone Edging	100 x 300 x 100	3.3	6	each
Ridgestone Bench - Including 2 Legs	1200 x 500 x 75	-	275	each
Viking Bench - Including 2 Legs	1000 x 300 x 100	-	115	each
Viking Birdbath	350 x 350 x 180	-	35	each
Jura Drainage Paver	680 x 440 x 45	-	28	each
Jura Demarcation Paver: Disabled	680 x 440 x 45	-	28	each
Jura Demarcation Paver: Cyclist	680 x 440 x 45	-	28	each
Jura Demarcation Paver: Pedestrian	680 x 440 x 45	-	28	each



KERBS

PRODUCT	SIZE	UNITS PER SQM-R/M	KG PER UNIT	UNIT OF MEASURE
Ridgestone Kerb - Short	400 x 150 x 120	2.5	10.7	each
Ridgestone Kerb - Long	600 x 150 x 120	1.67	19	each
Ridgestone Kerb - Inside Cnr	300 x 300 x 120	-	12.4	each
Saxon Splayed Kerb	490 x 150 x 75	2.04	11	each
Jura Splayed Kerb	300 x 150 x 120	3.3	11	each
Jura Splayed Kerb	500 x 150 x 120	2	18	each
Jura Splayed Kerb Inside Cnr	-	-	13	each
Jura Splayed Kerb Outside Cnr	-	-	13	each
Jura Splayed Kerb - Tree Ring	900ø	-	192	each
Jura Edging Kerb - Flat	700 x 165 x 75	1.43	20	each
Jura Edging Kerb - Inside Corner (Flat)	265 x 165 x 75	-	10.5	each
Jura Edging Kerb - Upright	700 x 75 x 120	1.43	13.5	each
Jura Edging Kerb - Inside Corner (Upright)	175 x 75 x 120	-	5.4	each



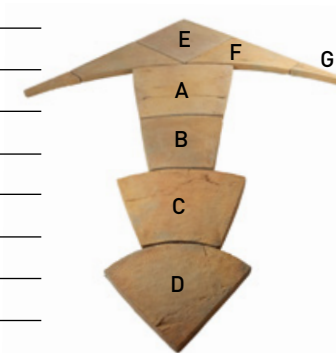
STEPS

PRODUCT	SIZE	UNITS PER SQM-R/M	KG PER UNIT	UNIT OF MEASURE
Ravine Garden Step - Half	250 x 350 x 150	-	31	each
Ravine Garden Step - Full	500 x 350 x 150	-	62	each
Ravine Garden Step Left Cnr	250 x 350 x 150	-	31	each
Ravine Garden Step Left Cnr	500 x 350 x 150	-	62	each
Ravine Garden Step Right Cnr	250 x 350 x 150	-	31	each
Ravine Garden Step Right Cnr	500 x 350 x 150	-	62	each
Roman Step	595 x 400 x 150	1.68	60	each
Ridgestone Step	400 x 300 x 100	2.5 / 3.3	25	each
Ridgestone Step	200 x 300 x 100	5 / 3.3	12.3	each
Ridgestone Step	400 x 400 x 100	2.5	33	each
Ridgestone Step Inside / Outside Cnr 400 x 400 x 300 x 100		-	31	each
Saxon Garden Step - Half	320 x 340 x 120	-	26	each
Saxon Garden Step - Full	640 x 340 x 120	-	55	each



CIRCLES

PRODUCT	SIZE	UNITS PER SQM-R/M	KG PER UNIT	UNIT OF MEASURE
York Circle (D) Centre	0.9m ø	4x	15	each
York Circle (C) Inner Middle	1.8m ø	8x	23	each
York Circle (B) Outer Middle	2.7m ø	16x	20	each
York Circle (A) Outer Ring	4m ø	16x	42	each
York Circle Corner Accessory (E)	-	4x	15	each
York Circle Corner Accessory (F)	-	8x	23	each
York Circle Corner Accessory (G)	-	8x	20	each
York Circle Full	4m ø	-	1250	kit
York Circle Full	4m ø with accessories		1565	kit



FIRE PIT

PRODUCT	SIZE	UNITS PER SQM-R/M	KG PER UNIT	UNIT OF MEASURE
Jura Circle Capping	220 x 340 x 40	12	5.5	each
Jura Fire Pit Block	340 x 195 x 100	48	11.2	each
Jura Circle Paver	240 x 120 x 45	45	2.3	each
Jura Circle Paver	510 x 440 x 45	16	18	each
Jura Fire Pit Full	2.7mø	-	995	4 ring = 400mm high
Jura Fire Pit Steel Insert	-	-	-	each



*Aluminium Fire Pit Cover Available

RECENT COMMERCIAL PROJECTS



KENT COBBLES - ERINVALLE HOTEL



YORK AND DEVON COBBLE - SILO HOTEL V&A



JURA COBBLES - STATION HOUSE



KENT COBBLES AND KLOMPIE PAVERS - SACS HIGH SCHOOL



JURA PAVERS - WEMBLEY SQUARE



JURA COBBLES - SILO V&A WATERFRONT



VIKING 3 x SIZE CLADDING - UITSIG WINERY



JURA COBBLES - CENTURY CITY PARKADE



DEVON COBBLES - THE SILO HOTEL V&A



DEVON COBBLES - FRANSCHHOEK



JURA COBBLES - V&A



VIKING RANDOM CLADDING - CAPE TOWN INTERNATIONAL AIRPORT

RECENT COMMERCIAL PROJECTS

- Leeu Dassenberg, Franschhoek
- Newlands Peak
- Station House, Sea Point
- Uct School Of Design
- Rewards Co, Durban
- Hillsong, Century City
- Bridgewater, Century City
- De Aan Zicht, Atlantic Hills
- Silo Hotel
- Silo 1-5 District
- V&A Waterfront Hotel
- The Ridge, V&A Waterfront
- Cape Town International Airport
- Bridgepark, Century City
- Chris Hani Bulding, Uct
- Uct Residential
- Erinvale Hotel, Somerset West
- Utsig Winery
- Kanonkop Winery
- Clifton Terraces



DEVON & JURA COBBLES - LEEU DASSENBERG ESTATE



VIKING RANDOM CLADDING - CAPE TOWN INTERNATIONAL AIRPORT



ROMAN STEP KERB - DEVONBOSCH



WORCESTER SPLIT - CENTURY CITY



VIKING RANDOM CLADDING - HERMANUS



KENT COBBLES - SACS JUNIOR SCHOOL



JURA PAVERS - BRIDGEPARK CENTURY CITY



KLOMPIE CLADDING - DE AANZICHT

Revelstone is committed to customer service, innovative product development, manufacture and design.

To help you obtain maximum enjoyment, satisfaction and long service from any of our products, we would like to bring the following to your attention.

COLOURS

All products are reconstructed to take on the appearance of natural stone, where shades vary and are subject to slight variations. This is highlighted when products are hand made or custom made to ensure a unique shade or colour mix. Colours can appear to change significantly depending upon the prevailing conditions such as sunlight, shade, rain, method of installation and sealing, you are advised to check colour and actual appearance before ordering. During manufacture, every effort is made to ensure consistency of product colour; however, variations in production batches can occur. Therefore, especially in the case of larger orders, we recommend that products are thoroughly mixed on site prior to laying to ensure a good colour distribution. All products are made using imported iron oxides and are embodied to ensure excellent long-term wear and appearance. The slight variations add to the natural appearance of all our products. Revelstone products will weather and wear over time in a similar manner to natural stone.

SIZES

All sizes, dimensions and weights in this brochure are nominal and subject to manufacturing tolerances. Our range is designed to simulate and replicate the appearance of natural stone, where sizes and thicknesses vary; these are exact copies of original stone masters. This ensures that all our products resemble, as closely as possible, the naturally weathered stone they simulate.

TEXTURES

Much care and attention has been spent ensuring that there is a wide variety and mix of textures within each size and range of Revelstone products. This is to ensure that there is no repetition of faces; all products are made from original stone replicas to ensure excellent surface and texture reproduction.

EFFLORESCENCE

White patches and markings can appear on the surface on newly laid paving, once it has been grouted – this is known as efflorescence. Initially an apparent loss of colour or a milky white bloom appears on the surface of the product which gives the impression that the colour has faded or washed out. This is not the case and the effect will disappear in time depending on location, degree of traffic or usage, and natural weathering. It is in no way detrimental to the performance or strength of the product. Revelstone cannot accept responsibility for the effect of efflorescence, a common occurrence in all high-quality coloured concrete products. Please contact us should you require more technical detail in this regard.

PRODUCT APPEARANCE

All products from Revelstone are manufactured and stored undercover before you receive them; this explains the dark sweat mark apparent on the face of the tile when you receive delivery. This occurs due to heat being created between the pavers in storage and will generally go away in time. Once the product has been laid and after varying lengths of time, dark and light patches can occasionally occur on the surface of the product. This is caused by differential weathering, water trapped beneath the product, or when the surface of the product has cured at a different rate. These patches or marks generally disappear over time.

AGGREGATE TRANSPARENCY

This is a passing nuisance that can occasionally occur on the product and cannot be prevented. It is caused by a combination of weather-related causes, the product situation, as well as elements in our raw materials which are out of our control. We do all we can to prevent this from happening by storing all goods undercover during curing and prior to delivery. We also use the latest technology in the form of additives and concrete technology. Yet, sometimes it does still happen and in most cases will disappear over time. The best is to allow nature to run its course, but it can be vastly improved by acid washing and then sealing with a solvent-base sealer which helps reduce the markings. Although, the best option is to leave it and allow it to dry naturally. In some instances, sealing may cause more long-term marking; especially in newly laid areas when the affected product has not been given enough time to dry out. This phenomenon is totally unpredictable and more prevalent in wet areas.

MAINTENANCE

Regular cleaning and maintenance is required to preserve the overall appearance of the product. The use of acidic cleaners should only be used in extreme instances. Our range of tiles are used extensively for indoor areas. This does require long-term protection and sealing/polishing to maintain the desired finish. This will protect the product against daily wear and tear associated with indoor living. Our products are ideal for outdoors and can be left untreated, allowing the product to naturally weather and wear to reflect the natural hues of the stone it replicates.

We recommend our products are sealed outdoors depending on your personally chosen colour or the situation of product and your personal requirements. It can only serve the product well and will enhance the appearance should you not want to wait for the product to naturally weather and wear, creating its own natural shine and finish.

STORAGE AND HANDLING

All products must be handled carefully to avoid damaging the edges and surfaces of the product. All products must always be stored undercover and on their edge, stacked vertically (not horizontally), leaning against a wall and raised off the ground with pieces of timber (this prevents it leaching moisture from the ground).

MATERIALS

To ensure that all our products are of the highest possible standard and are long lasting, over the past years of development we have sourced the best quality sands, granite stone, quartz, colour pigments and cement which we use in the manufacturing process. All our products are made using imported iron oxides and are embodied to ensure excellent long-term wear and appearance. Revelstone relies on suppliers to deliver consistent colours in the sands and cements we use; however, this is out of our control as quarries change at regular intervals. The long-term advantage of our products is that they respond well to the effects of modern living, wear and weather conditions which enhance their overall appearance. The colour shades will mature with age and become more attractive due to wear, traffic and natural growths, giving the product character and the desired weathered stone appearance.

Examples of different product appearance, efflorescence and aggregate transparency can be viewed on our website – www.revelstone.co.za

BROCHURE / WEBSITE / APP

The colours shown are as exact as photographic and printing processes will allow. We recommend that colours are chosen from actual products and not on what is shown in this brochure; samples are available free on request. As innovators, we are constantly improving and adding to our range; accordingly we reserve the right to vary designs and specifications shown herein.

SHOWROOM - NEW AND IMPROVED!

The showroom was designed to assist you with ideas on how our products can be used in your unique environments. It is beneficial when viewing all products laid in-situ, as opposed to perusing a catalogue or website. Please visit us, where one of our sales team will help you in choosing the product suitable for you. Colour samples are available on request for you to take home.

ASSURANCE OF QUALITY

Products of inferior quality, which cost less, are often offered with the implication that they are equal to Revelstone. You have chosen Revelstone products because your new patio, garden, driveway, development or project deserves only the best. Since its inception in 1993, Revelstone has been committed to quality products, customer service, innovative product development, manufacture and design. To help you obtain maximum enjoyment, satisfaction and long service from any of our products, we recommend once you have made your product choice from the catalogue, that you verify with your paving, pool company, contractor or builder that you are being supplied with Revelstone products and not an inferior replica.

The following guidelines are recommended by Revelstone, as the manufacturers, as the correct way to install their cast stone products. However, it must be understood that as Revelstone does not provide an installation service, the company cannot be held responsible for any defects which may arise from incorrect installation by contractors or clients. It is important that only experienced installers and contractors are used; do not use installers who are unfamiliar or inexperienced with cast stone products.

ALL GUIDELINES HEREIN ARE DONE AT YOUR OWN RISK.

Please view our website for information regarding preparation, layouts, installation and sealing guidelines for Revelstone products – www.revelstone.co.za

MATERIAL SPECIFICATIONS

SIZE: All sizes and product specifications herein are approximate

COLOUR: Colour embodied to ensure excellent long-wear and superior resistance

COMPRESSIVE STRENGTH: 34-36mpa (+)

DENSITY: 2 300kg/m₃

ABSORPTION: Average of 5% (SANS 1058 prescribes maximum average 6.5% to 8.0%)

ABRASION RESISTANCE: 4-8 grams mass loss (SANS 1058 prescribes average mass loss should not exceed 15grams)

SHRINKAGE: 0.05%

SCM (SLAG): 20% of cementitious

OUR GREEN POLICY

Revelstone is making a conscious effort to minimize our impact on the environment through sensible, sustainable and cost-effective manufacturing. We are very selective in the procurement of our raw materials. All of our suppliers have committed to a green approach and are leaders in their fields.

We have been reusing our old moulds to manufacture new moulds since our old moulds are recycled and morphed into new products. As such, we do not dump PU OR PVC moulds which are indestructible and non-biodegradable.

THE GREEN BENEFITS OF OUR PRODUCTS

1. Produced using 95 % of local raw materials located within 100kms from our factory. Lowering the transportation impacts, reducing our carbon footprint.
2. Manufactured using 100% Recyclable Moulds, since 1996.
3. Manufactured using reclaimed industrial materials or SCM's that otherwise end up in landfills.

4. These recycled materials or SCM's are used as a replacement for cement and improve the strength and durability of concrete as well as reducing the CO2 embodied in our concrete by as much as 40%.
5. Concrete can be recycled and used in low-cost concrete products as a partial aggregate replacement.
6. Cast stone products are durable, recyclable, cost-effective, sustainable, versatile, resistant, energy efficient and innovative.
7. Concrete is very effective in reducing energy consumption in the building, due to its high solar reflectivity and a high thermal mass. (lowers energy consumption)

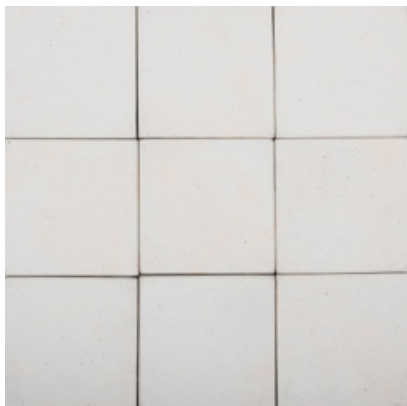
REVELRUBBER MOULD AFTER RECYCLING - www.revelstone.co.za



STANDARD COLOURS

W = WHITE CEMENT

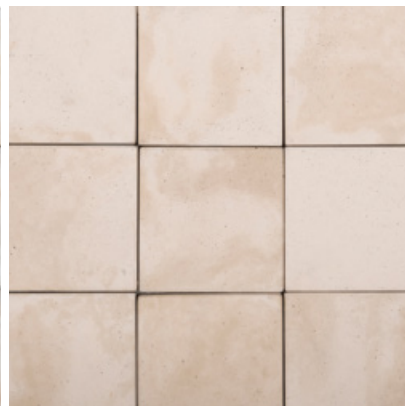
G = GREY CEMENT



LIMESTONE - W



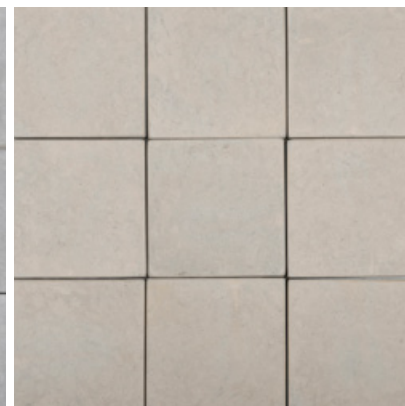
AUTUMNSTONE - W



PERFECTSTONE WHITE - W



GREY BLEND - G



STONE - G



PERFECTSTONE GREY - G

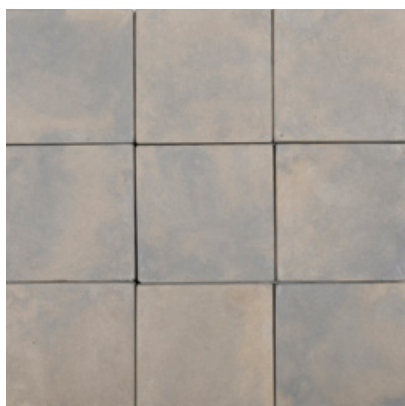


TABLE MOUNTAIN - G



CHARCOAL - G



GRANITE - G









CARBON - G

- CUSTOM MADE COLOURS CAN BE MADE ON SPECIAL REQUEST.
- WHITE CEMENT COLOURS AVAILABLE WHEN IN STOCK. PLEASE ORDER WELL IN ADVANCE.
- WHITE CEMENT COLOURS ARE NOT MANUFACTURED IN COBBLES, KLOMPIE PAVERS AND SOME LANDSCAPE PRODUCTS.
- THE CARBON COLOUR CARRIES A 10% SURCHARGE.

PLEASE CONTACT A MEMBER OF THE SALES TEAM TO ADVISE ON THE ABOVE AT sales@revelstone.co.za

- GUIDELINE ONLY: COLOURS AND TEXTURES WILL VARY. ACTUAL PRODUCT SAMPLES ARE AVAILABLE ON REQUEST.

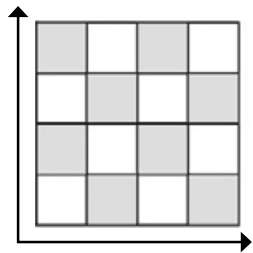
STANDARD COLOURS W = WHITE CEMENT G = GREY CEMENT

		
SUMMERSTONE - G	MELLOW BLUFF - G	SANDSTONE - G
		
QUARRYSTONE - G	ROBBEN ISLAND - G	RUSTIC BLUFF - G

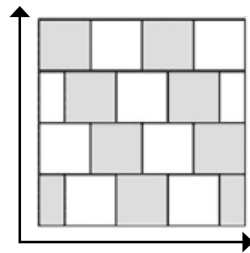
TEXTURES

	
DEVON TEXTURE*	RAVINE TEXTURE
	
KENT TEXTURE	JURA TEXTURE

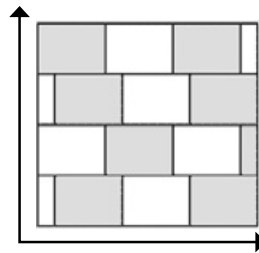
*AVAILABLE FOR TILES, PAVERS & CAPPING ONLY.



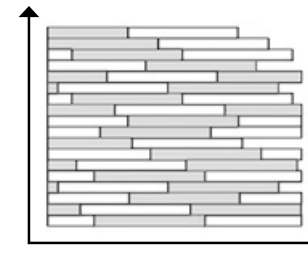
SQUARE BOND
CHECKER-BOARD



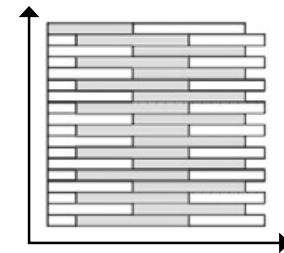
HALF BOND



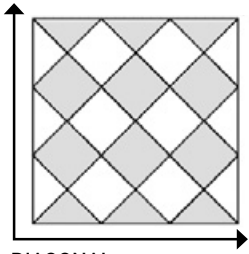
QUARTER BOND



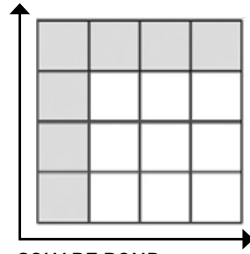
SPLIT CLADDING - RANDOM



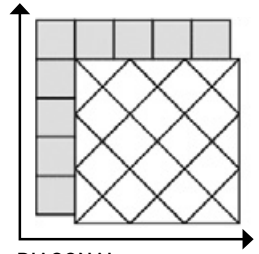
SPLIT CLADDING - HALF BOND



DIAGONAL



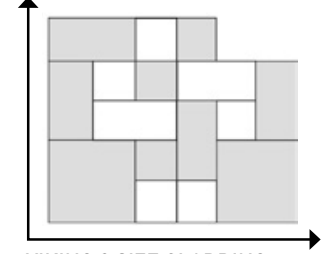
SQUARE BOND
WITH BORDER



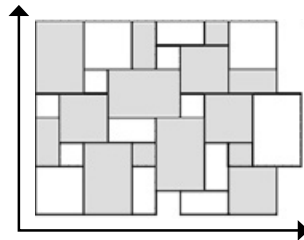
DIAGONAL
WITH BORDER



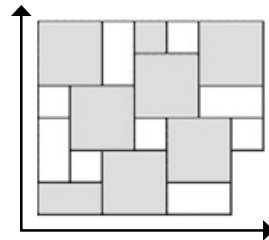
RIDGESTONE CLADDING 12 MIX SIZES



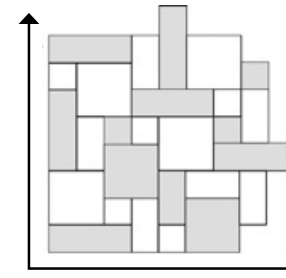
VIKING 3 SIZE CLADDING



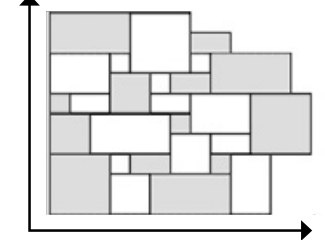
4 SIZE PAVERS



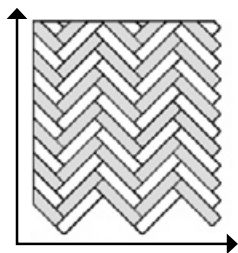
3 SIZE PAVERS AND TILES



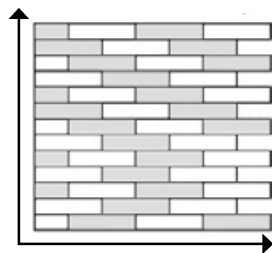
VIKING 4 SIZE CLADDING



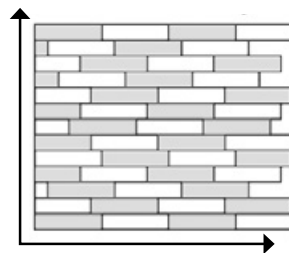
VIKING 6 SIZE CLADDING



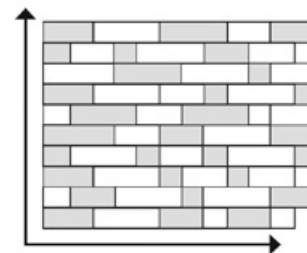
KLOMPIE, JURA OR
TUSCAN COBBLE
45° HERRINGBONE



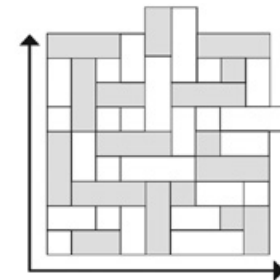
KLOMPIE, JURA OR
TUSCAN COBBLE
HALF BOND



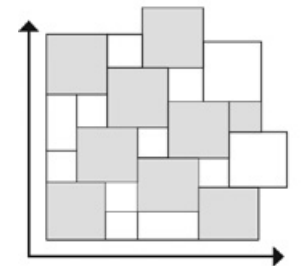
KLOMPIE, JURA OR
TUSCAN COBBLE
RANDOM STRETCHER



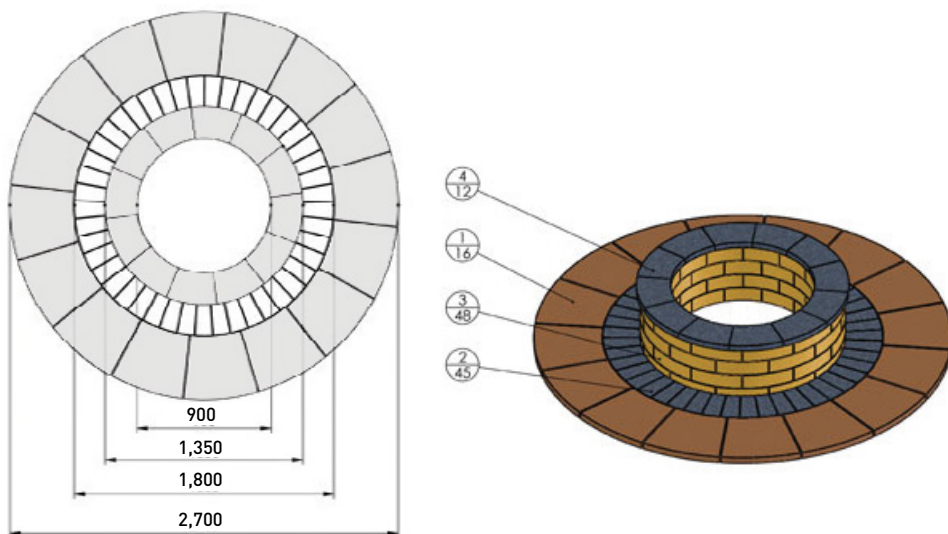
TUSCAN COBBLE
3 SIZE STRETCHER



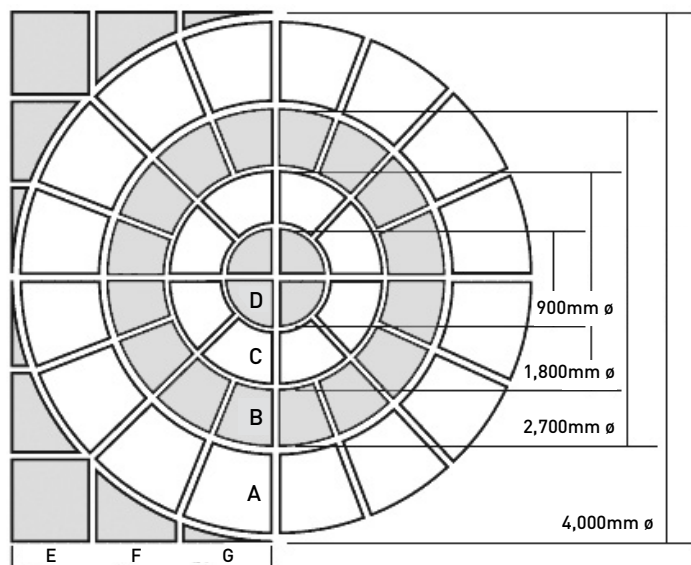
TUSCAN COBBLE
3 SIZE 90° HERRINGBONE



KENT COBBLE 2 SIZE MIX



JURA FIRE PIT
(Can be combined with YORK CIRCLE below)



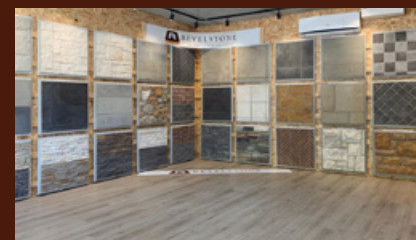
Corner Accessories

YORK FULL CIRCLE
(16 Sqm Coverage)

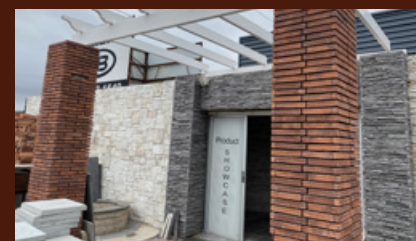
REVELSTONE DISTRIBUTORS WITHIN THE WESTERN CAPE



Buco – Hermanus
Showroom Tel: 028 312 1131



The Merchant Tiler – Plettenberg Bay
Showroom Tel: 044 533 4436



Halfway Bricks – Somerset West
New Showroom Tel: 021 853 1540

HEAD OFFICE, FACTORY & SHOWROOM

021 761 9739

Adam House, Orion Road
Nerissa Estate, Lansdowne
Cape Town

PO Box 30314
Tokai 7966

info@revelstone.co.za
sales@revelstone.co.za

SHOWROOM HOURS:

Monday - Thursday:
8:15am - 17:00pm
Friday:
8:15am - 16:00pm
Saturday:
9:00am - 12:00pm
Sunday & Public Holidays:
Closed



www.revelstone.co.za



REVELSTONE

the alternative to real stone®

VISIT
OUR NEW
SHOWROOM
TODAY!



All information, illustrations and photographs herein are under copyright to Revelstone (Cape) (Pty) Ltd. - with trademarks on product names: Ravine, Saxon, York and Devon - trademarks pending on Viking, Ridgestone, Roman, Kent and Jura. Please see our sales terms and conditions at www.revelstone.co.za (copy available on request).

We strive to serve a higher management in our service and products