

The right way to attach almost anything to metal roofs!

S-5![®]

The Right Way

S-5-K Grip[™] Clamp

The S-5-K Grip[™] clamp was specifically developed to fit Saflok[®] and similar bulb snap-together seams. The design utilizes multiple inserts used for a variety of bulb snap-together profiles. Each insert has a unique shape that allows for a tight fit and provides increased holding strength for that profile.

The head of the flanged bolts control the amount of compression, which reduces the possibility of over-compressing the seam.

Just place the clamp on the seam, position the insert piece, and tighten the flanged bolts at the base. Then, affix ancillary items using the top bolt provided. Go to: www.S-5.com/tools for information about properly attaching S-5![®] clamps.

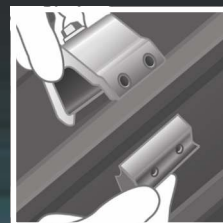
S-5-K Grip[™] Mini Clamp

The S-5-K Grip Mini is a bit shorter than the S-5-K Grip and has one base bolt rather than two. The mini is the choice for attaching all kinds of rooftop accessories: solar arrays, signs, walkways, satellite dishes, antennas, rooftop lighting, lightning protection systems, exhaust stack bracing, conduit, condensate lines, mechanical equipment—just about anything!

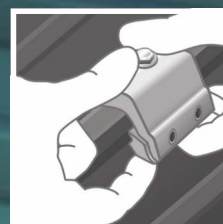
S-5-K Grip[™] is a non-piercing clamp. It was specifically developed to fit Saflok[®] and similar bulb snap-together seams, and will not void warranties on Safintra concealed-fix roofing.

S-5! PV kits have an M8 bolt and are suitable for use with all S-5! clamps.

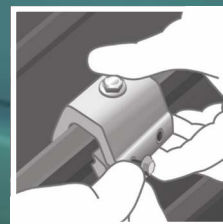
1



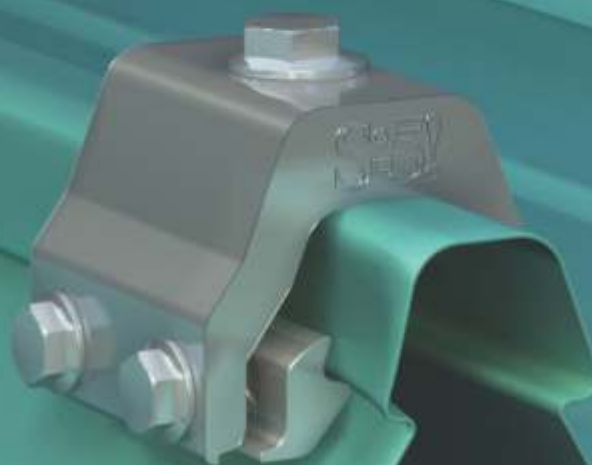
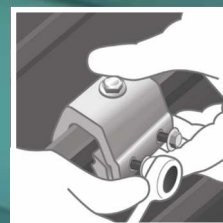
2



3



4



S-5-K Grip[™] and S-5-K Grip[™] Mini



The S-5-K Grip™ eliminates the large moment arm and features a low mounting surface area with the mounting bolt directly over the centre of the seam, which dramatically increases the strength of the clamp.

The S-5-K Grip™ and S-5-K Grip Mini clamps are each furnished with the hardware shown to the right. A structural aluminum attachment clamp, the S-5-K Grip is compatible with most common metal roofing materials excluding copper. All included hardware is stainless steel.

S-5!® holding strength is unmatched in the industry.

The S-5-K Grip clamp has been tested for load-to-failure results on a variety of standing seam roof profiles from leading panel manufacturers. For design assistance, contact Safintra South Africa (and see our website www.safintra.co.za), or visit www.S-5.com for the independent lab test data that can be used for load-critical designs and applications. Also, please visit S-5! website for more information including metallurgical compatibilities and specifications.

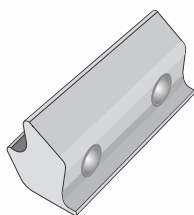
Example Profiles



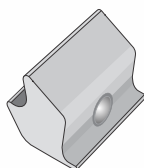
Insert Options

Safintra Saflok 410 and similar profiles

S-5-GX 10 Insert

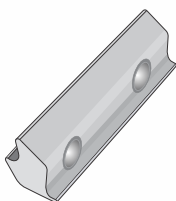


S-5-GXM 10 Mini Insert

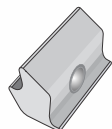


Safintra Saflok 700 and similar profiles

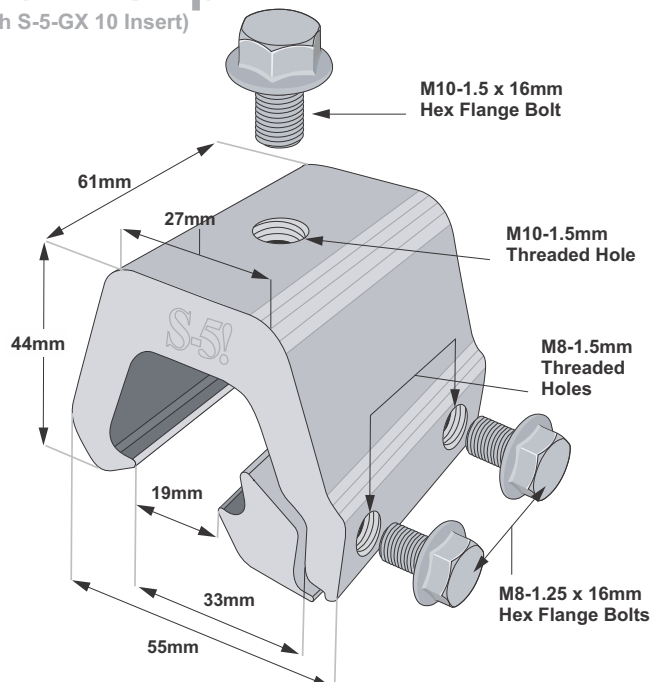
S-5-GX 50 Insert



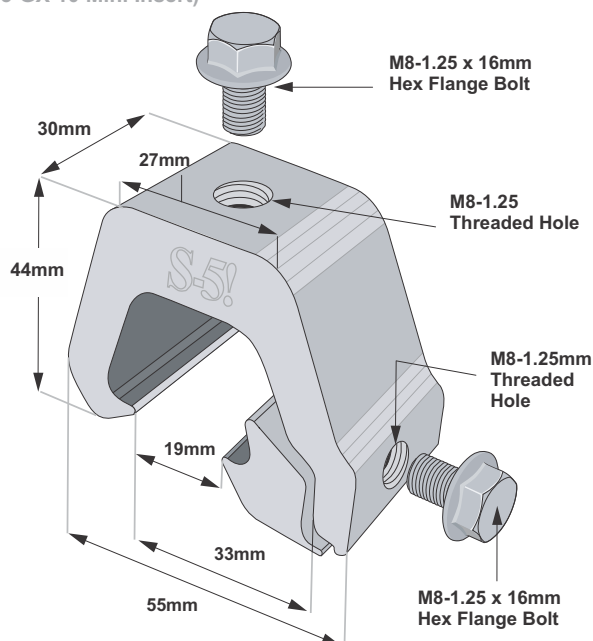
S-5-GXM 50 Mini Insert



S-5-K Grip™ (With S-5-GX 10 Insert)



S-5-K Grip™ Mini (With S-5-GX 10 Mini Insert)



Please note: All measurements are rounded to the second decimal place

S-5!® Warning! Please use this product responsibly!

S-5! Brackets and clamps are not tested for performance as part of a Fall Arrest or Personal Safety system. These applications need to be tested as a dynamic system and warranties or test results must be issued by the system provider. Safintra, Safal Group and its subsidiaries provide no warranties or any assurances in this application, and will accept no claims of any nature whatsoever arising out of any such applications.

Products are protected by multiple international patents. For published data regarding holding strength, bolt torque, patents and trademarks visit the S-5! website at www.S-5.com.

Copyright 2013, Metal Roof Innovations, Ltd. S-5! products are patent protected. S-5! Aggressively protects its patents, trademarks and copyrights.

Sole Agents for Africa:



www.safintra.co.za / www.safintra.com