



tradition • innovation • quality

FLOORING SYSTEMS

a.b.e.® Construction Chemicals (Pty) Ltd is a CHRYSO Group Company

CHRYSO

Primers

•
Cementitious systems,
green concrete, damp
substrates, epoxy systems
and self-levelling screeds



Beefmaster Abattoir Kimberley
abe.®prime GCP (Green Concrete Primer) used with abe.® screed PU



Project - receive epoxy



Project - receive vinyl



Project - remove tiles



abe.®screed SLC acrylic primer used with abe.®screed SLC P
Project - receive vinyl flooring

abe.®cote primer is a general purpose, chemical resistant epoxy primer used as part of various epoxy flooring applications that include screeds, self-levelling and coating systems.

abe.®prime GCP may be used as a primer for green concrete, sealer for porous cured concrete and curing compound for freshly poured concrete which does not have to be removed for subsequent top coating. This primer may be applied within 24 hours of concrete pour. Top coats like Terrazzo and self-levelling floor formulations may be applied within 2 days of the primer application.

abe.®prime SLC acrylic primer gets used before applying **abe.®prime SLC** pumpable self-levelling compound, which improves the self-levelling screed's adhesion to the concrete substrate, reduces surface absorbency and seals the substrate.

epidermix 116 is solvent free, epoxy compound that frequently gets used to prime concrete screeds prior to the application of **a.b.e.®** flooring systems like **abe.®screed dura.®Top**, a self-smoothing, dustless overlay for levelling floors that are bonded to a new concrete overlay.



**New Brighton,
Public Works Bathroom, PE**
abe.®prime SLC acrylic primer



**REFER TO OUR
FOOD & WINE INDUSTRY
APPROVED PRODUCTS**

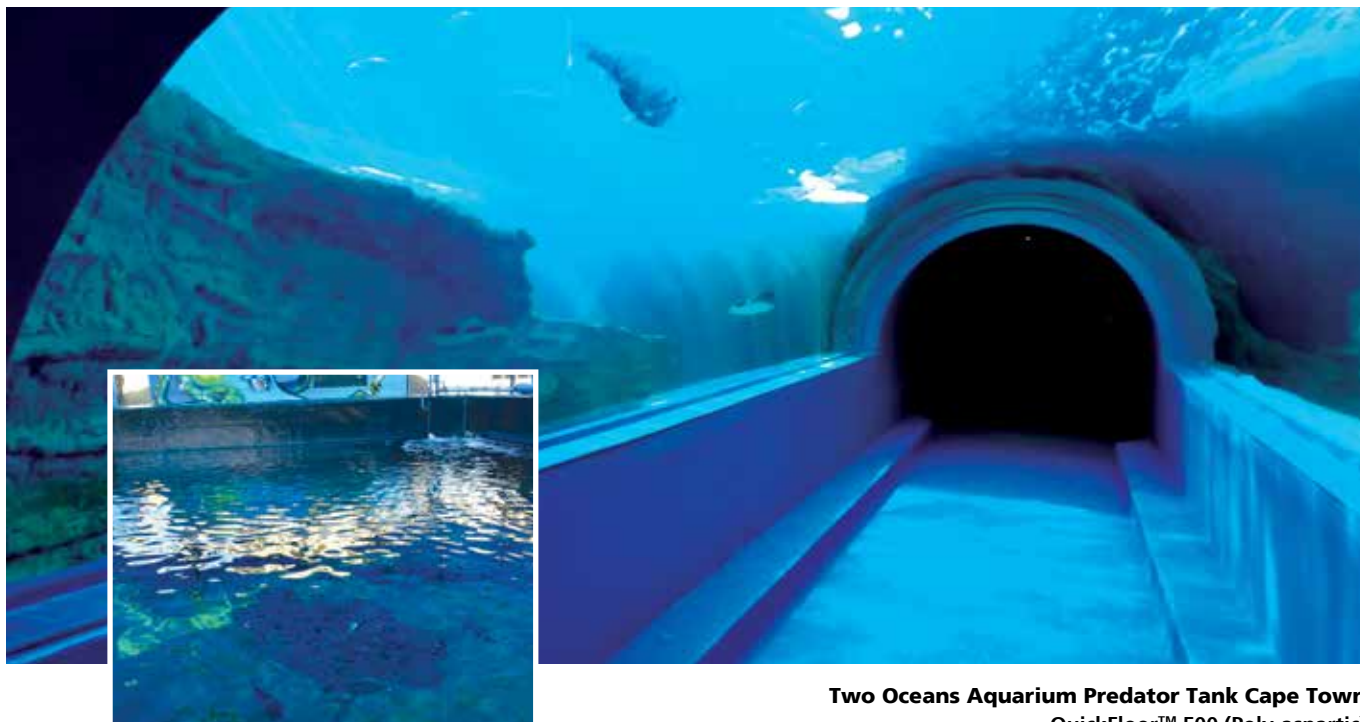
Coatings



Polyurethane and polyurea technology



House PE
abe.®cote 337 Havanna Beige with
abe.®cote clear polyurethane top coat



Two Oceans Aquarium Predator Tank Cape Town
QuickFloor™ 500 (Poly-aspartic)



abe.®cote 441 offers a durable, hard wearing, decorative, chemical, UV and abrasion resistant solution for medium duty applications. This polyurethane enamel is a protective and decorative coating for steel, concrete and timber; as well as finish coating on various flooring systems. Available in matt and gloss finish. This was an ideal solution for EMPS bed factory and Pick 'n Pay Hemmingways receiving.

abe.®cote clear polyurethane coating is formulated to provide an ultra-durable clear coating with a gloss or matt finish that is UV resistant with good chemical resistance against water, alcohols, salt solution and petrol. It is essentially used as a top coating for the sealing/maintenance of

polyurethane and epoxy coatings. **abe.®cote clear PUD** also offers a very good cleaning effect and resistance to car-tyre contamination (black heel marking – BHM) which is ideal for applications with foot or tyre traffic.

QuickFloor™ 500, is a colourfast flooring protector and a smooth poly-aspartic coating, ideal for harsh marine conditions with strong resistance to chlorine and saltwater which was why it was specified for the Two Oceans Aquarium not only as additional protection but also to inhibit algae growth on what is now an exceptionally smooth and glossy tank lining. This exceptionally quick-acting, roller applied flexible coating also provides excellent adhesion to concrete substrates and superior chemical resistance, compared with solvent driven epoxies and urethanes.



Douglas Green Cellars, Western Cape
abe.®cote 441 (used on floors)

Coatings



Epoxy and polyurethane systems

Shoprite DC floor Epping
abe® flooring resin





abe.cote 337 tough epoxy paint is a protective, decorative and oil resistant coating for cementitious, masonry and asphaltic surfaces. It gets widely used because it can easily be overcoated at any time for maintenance and is very economical.

abe.cote flooring resin can be used as a:

- primer/pore sealer for suitably prepared cementitious substrates;
- for subsequent epoxy or polyurethane coating/screed applications;
- clear sealed finish to diamond ground concrete like for the Shoprite DC in Cape Town;
- or fine sand bulked up for a scraper coat repair work prior to two-part decorative floor application finishes.



abe.cote 320 is an epoxy enamel coating which is a decorative and protective coating for most surfaces not exposed to extensive sunlight. **abe.cote 320** provides an economical hard finish, which offers surfaces improved abrasion resistance and aesthetic finish and is suitable for walls and containment areas free of extensive sunlight. Excellent for resistance to sugar, solvents, salt spray, several chemicals.



Windhoek Moha Building, Namibia
abe.cote tough epoxy paint 337 WD (primer)



UNITRANS FORD, LOUIS TRICHARDT
abe.cote tough epoxy paint (WD 337)



HOUSE FOURWAYS
abe.cote tough epoxy paint (WD 337)



Assegaai Bosch Olive Farm George



NEU Pack Factory KZN



Havana Hills Wine Estate Western Cape



Base 4 Aviation Western Cape

abe.[®]cote
tough epoxy paint
(WD 337)

Specialised systems



Polyurethane, heavy duty,
chemical resistant



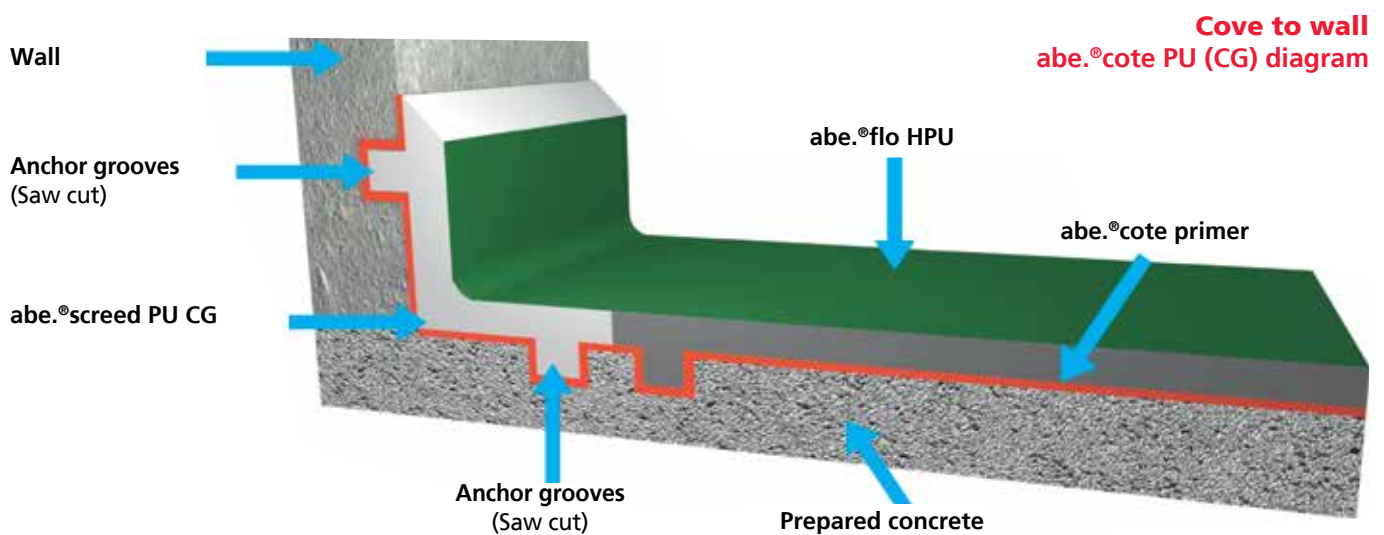
Turbine Hotel & Spa, Knysna
abe.[®]flo HPU



BlueBerry Cafe, Nottingham Road
abe.[®]flo HPU



Beefmaster Abattoir Kimberley
 abe.®screed PU used with abe.®prime GCP



abe.®flo HPU is a poly-urethane self-levelling mortar that can be applied between 2 and 6 mm. It provides a heavy duty, thermally shock resistant, hard wearing floor finish with exceptional chemical resistance. Typical areas of application include food processing factories, chemical processing plants, and pharmaceutical production for use in wet and dry processes and where the floor is subjected to hot fluid spillage steam cleaning, heavy traffic, impact and chemical attack.



abe.®screed PU offers the same as **abe.®flo HPU**, but also with the ability to resist heat of up to 120 °C and is applied at 6 to 10 mm thick.

abe.®screed PU (CG) is a polyurethane coving and render mortar which compliments **abe.®screed PU** by providing a coving and rendering finish to floor screed applications and may be applied from a feather edge to 12 mm thick on vertical applications.



abe.®cote 400 hi-build is an economical epoxy flooring system suitable for a variety of applications from:

- ablution blocks
- walkways
- food processing plants
- hospitals and schools;
- to workshops such as at Tekton Autobody due to its strong resistance to oil, grease, diesel, acids and alkalis;
- it could also be used as a binder for abrasive grit to provide non-slip floor finishes.



abe.®flo is a self-levelling flooring surface system that caters for high hygiene standards with good colour retention and a medium gloss finish.

Typical end-use locations are hospitals; schools; kitchens; factories; showrooms; laboratories; canteens; supermarkets; garages and outlets like Vodacom in Maseru, Lesotho. It is not recommended for use in areas that are subject to heavy mechanical impact and abrasion.

abe.®co mastic is a flexible, hard wearing, self-healing cold-laid bituminous mastic consisting of stone chippings, Portland Cement, sand and a binder, **flintkote 3**. It has been successfully used in numerous heavy duty flooring applications whereas single areas laid have often exceeded 10 000 m². Also for floor repair, including timber surfaces.

Specialised systems



Epoxy and bituminous





100Mw Kathu Solar Park
abe.®flo



House Neifer
abe.®flo



FNB Parkade Sandton
abe.®co mastic



Wits School Mortuary, Gauteng



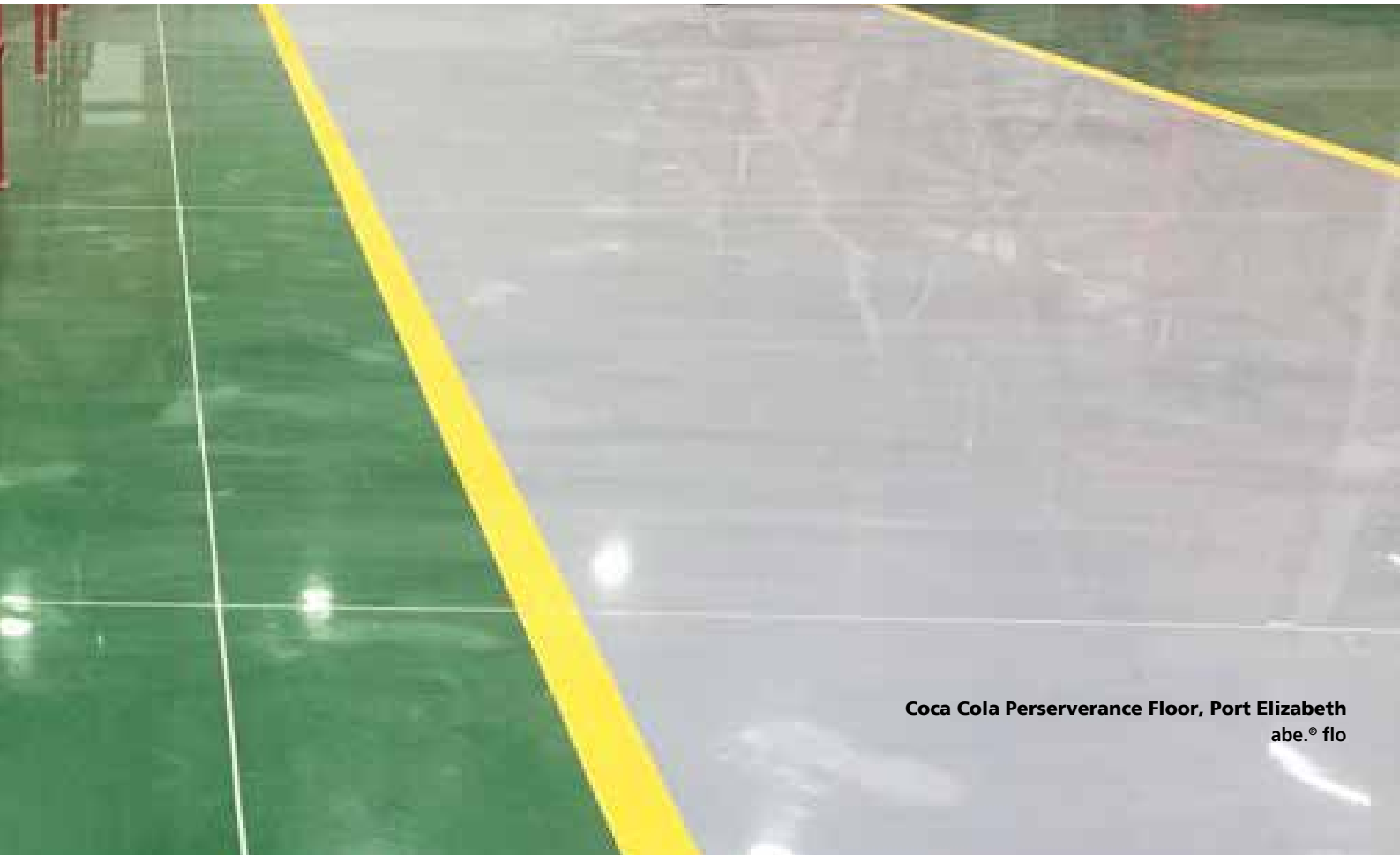
Hairdresser East London



Tekton Panelbeaters Western Cape



Ithala Bank KZN



Coca Cola Perserverance Floor, Port Elizabeth
abe.® flo

abe.[®]cote 400 hi-build



***abe.[®]dur S** is a blend of very hard, high wearing natural aggregates, shrinkage compensated cement, free from metallic material, used to produce a hard wearing granolithic type floor. In flooring applications its main use is surfacing areas operating under very wet or dry conditions and/or subject to extreme wear internally or externally. Due to its ultra high strength and high abrasion properties makes it ideal for quick turnaround applications.

***abe.[®]cron LA** is a non-metallic, modified level assisting natural aggregate, dry shake surface hardener, that is ready-to-use for:

- hardening indoor and outdoor concrete surfaces subject to light or moderate traffic.
- applied over freshly levelled and floated concrete, providing a low cost solution for hardening new industrial, commercial or residential concrete floors.
- areas where attractive, more uniform colour is desired to enhance the appearance of the floor and the working environment.
- warehousing and storage areas, automotive maintenance areas and other maintenance facilities.
- shopping centres, motels, schools, theatres, hospitals, car parks, pavements, driveways and patios.



*Dustless
technology

Cementitious systems

Hard wearing
and high abrasion
resistant



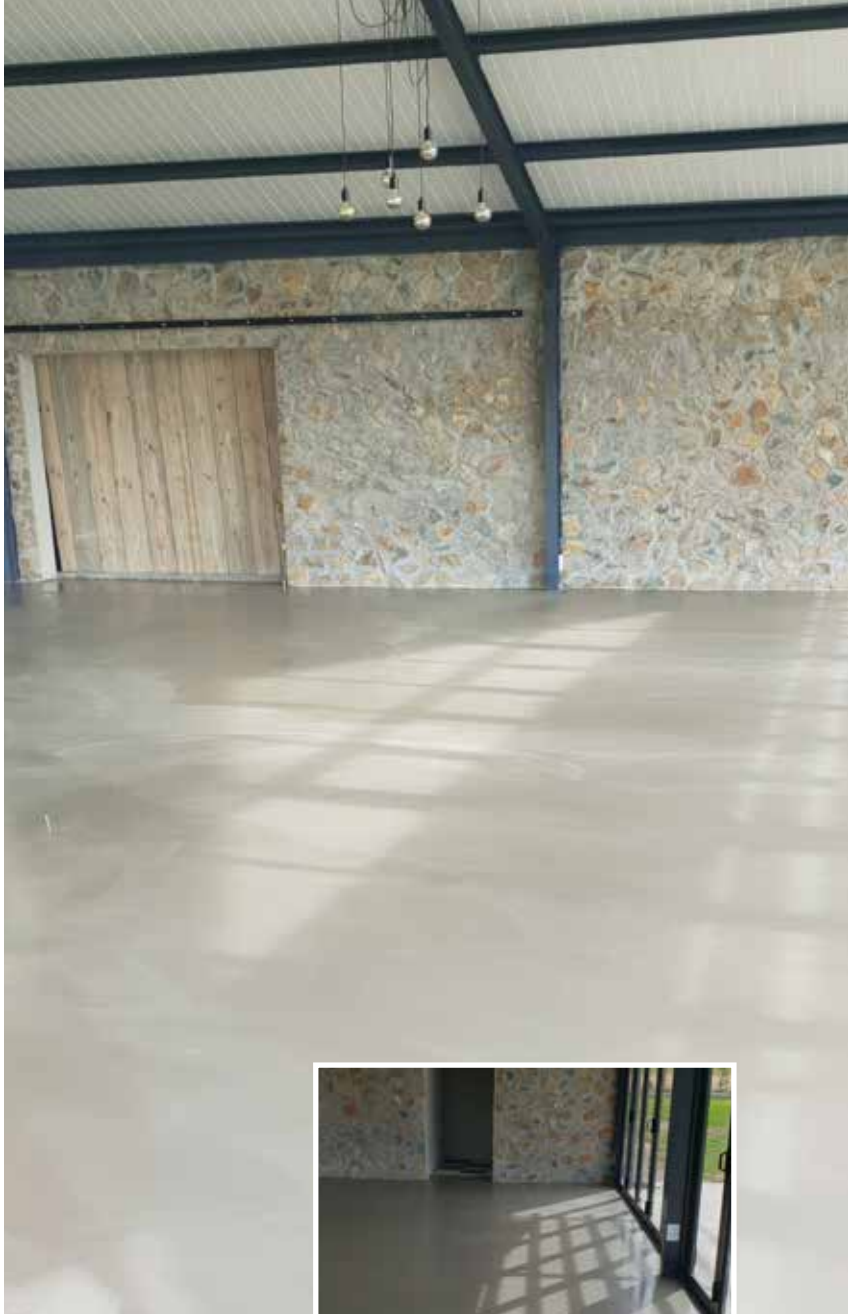
Makro Cornubia, Mount Edgecombe (KZN)
abe.®cron LA



Steenstel Fruit Warehouse Western Cape
abe.®cron LA

***abe.®screed SLCP** is a self-levelling compound pumpable fast-track screed for levelling floors where quick setting is essential. It can be hand applied by trowel from 0 – 20 mm thick or can be pumped 4 – 20 mm thick. It is ideal for fast-track refurbishment and new construction where finishes such as carpets, ceramic tiles, vinyl, wood block or cork need to be applied quickly, typically in office buildings, dwellings, shops, public buildings, schools, hospitals and airports.

***abe.®screed dura.®Top** is a quick hardening, self-smoothing, shrinkage compensated overlay for levelling floors which can be laid at thicknesses up to 30 mm, with a minimum of 6 mm when pumped or laid by hand. It is ideal for fast-track refurbishment and new construction where there is a demand for smoothing floors in factories, workshops and warehouses; raising floor levels; and structural strengthening. It may be used alone or including a seal coat, namely **abe.®seal finisol** and/or in combination with an **a.b.e.®** epoxy or polyurethane topping to provide better aesthetics and increased resistance to wear and chemical attack.



Central Medical Stores Trust Lilongwe, Malawi
abe.®screed dura.®Top



Cementitious systems



Fast track, self smoothing or structural needs



Ignite Gym Port Elizabeth
abe.®screed SLC P



New Brighton Public Works, Port Elizabeth
abe.®screed SLC P



Newcrest Catering Kitchen, Lusaka
abe.®screed dura.®Top



Loeriesfontein Wind Farm, Northern Cape
abe.®creed SLC P



Port Shepstone Library, KZN
abe.®dur S



Murasie Function Venue, Western Cape
abe.®screed dura.®Top

abe.[®]screed SLCP and
abe.[®]dur S projects

Curing
compounds



Epoxy tile grouts



Acid resistant systems

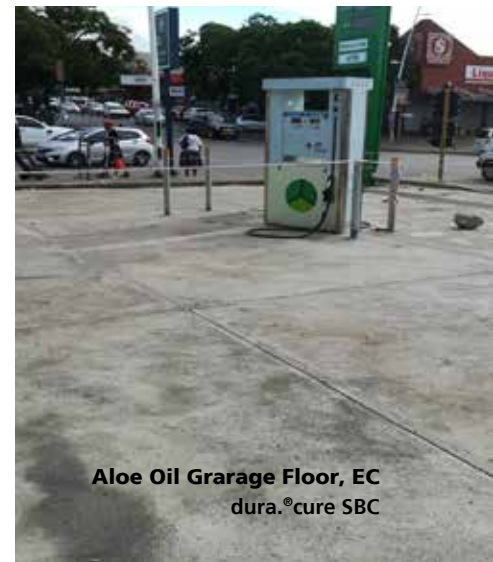




Warehouse Floor, CLF JHB
dura.®cure SBC



High Court, PE
dura.®cure SBC



Aloe Oil Garage Floor, EC
dura.®cure SBC



dura.®cure SBC is a liquid membrane forming curing compound (Type 1: Astm 309) whilst dura.®cure SBW is a Type 2 concrete curing compound (Astm 309). It can be applied easily and quickly by spray, brush or roller for efficient curing of concrete. Curing compounds facilitates more complete hydration of cement and thereby increases the strength of concrete, increases wear resistance and curbs dusting.

epidermix 215 is an epoxy tile pointing grout for the pointing between acid resistant ceramic wall and floor tiles. Suitable for use generally in breweries, wine cellars and other tiled, hygienic food and beverage preparation areas. It is chemical and abrasion resistant; prevents degradation of painting; eliminate entrapment of contaminant and other harmful organisms; and prevents ingress of contaminants.

abe.®cote 217 SF is a high chemical resistant, heavy duty clear epoxy resin used for sealing porous elements such as concrete and wood or other a.b.e.® coating systems for protection, laminating, screening and grouting applications.

Aquarelle Development, PE
abe.®cote 217 SF



Hi-Tech Auto, PE
dura.®cote 217 SF



Micro-toppings

Mineral and textured effects



Outdoors



Indoors

Imagine contemporary and durable interiors, **CHRYSO® Béton Ciré** is a millimetric decorative overlay for interior walls and floors. It is a multi-coating process for medium duty applications on floors, walls, furniture and worktops. It is durable and resistant, easy to maintain and comes in a wide range of colours.

Decorative millimetric **Béton Ciré** offers applications for tertiary developments such as restaurants, hotels, offices, stores and residential areas such as living rooms, bathrooms, kitchens and bedrooms.

Geofloors, EL

CHRYSO® Béton Ciré to wooden shelf



Converse Shoes Fourways Mall, Gauteng

CHRYSO® Béton Ciré

Virgin Active, Gauteng

CHRYSO® Béton Ciré





Swimming pool borders
CHRYSO® Lumin P+

LuminTech® technology makes decorative horizontal surfaces glow brightly in the dark. It takes the form of coloured inserts of particles that are incorporated into the concrete. **CHRYSO® Lumin P+** is available in jade and agate particles and offers excellent abrasion resistance and luminence for over 10 hours. Particles are made using recycled materials and mineral pigments.

Ideal for pavements, cycle paths and roundabouts, patios, walkways, pool decks, interior floors and walls.



DAY

NIGHT



Private House, East London
CHRYSO® Texture Top

Turn old concrete into a new textured surface, **CHRYSO® Texture Top** is a millimetric decorative, non-slip cement based overlay with high durability and strength for medium duty applications. Can be sprayed on using a spray gun, towel smoothed or broomed.

Ideal for residential developments such as patios, pool decks, paths and stairs as well as for urban developments such as pavements, road areas, alleys and garden/communal areas.

Give your concrete a sanded texture, **CHRYSO® GraniCrete** transforms a concrete slab into a continuous seamless or sanded polish surface. Non-slip, uniform and fine sanded texture which comes in a range of colours. It can be used to create monolithic horizontal surfaces which has an appearance and feel, suitable for both urban and residential developments.



Private House, KZN
CHRYSO® GraniCrete

Decorative Concrete Solutions by CHRYSO

CHRYSO



CHRYSO SOUTHERN AFRICA GROUP

GAUTENG (Head Office): 101 Main Reef Rd, Boksburg North, 1459 +27 (0) 11 306 9000

Cape Town: +27 (0) 21 505 2800 | Durban: +27 (0) 31 913 5400 | Bloemfontein: +27 (0) 51 432 0036

Port Elizabeth: +27 (0) 41 391 6000 | George: +27 (0) 44 874 0690 | East London: +27 (0) 43 726 0115

FOLLOW US:



www.abe.co.za