



tradition • innovation • quality

a.b.e.® Construction Chemicals

# CHRYSO® Béton Ciré Finishing

## FOR DECORATIVE CONCRETE FINISHES



### DESCRIPTION

**CHRYSO® Béton Ciré Finishing** is a blend of selected dry powders containing Portland cement, minerals and additives.

**CHRYSO® Béton Ciré Finishing** is utilized in innovative systems, for renovations as well as new construction.

### USES

- As a plain, burnished or coloured skim application to walls, floors and ceilings
- Columns, stairways, architraves and facades.
- Furniture made of concrete and MDF wood.
- Counter tops
- Wet rooms, kitchens and bathrooms
- Decorative or architectural fine finishes
- Decorative applications in commercial buildings, hotel lobbies and show rooms
- Can be applied over **CHRYSO® Béton Ciré Grip** and **CHRYSO® Texture Top**

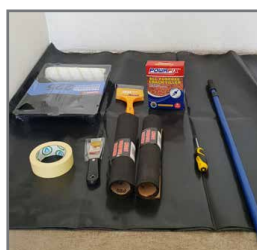
**Note: the products consistency will require polymer adjustments subject the type of application.**

### ADVANTAGES

- Easy to apply
- Quick drying, reduced turnaround time
- Wide range of architectural features
- Warm earth colours available
- High bonding properties
- UV stable
- Stain resistant subject to sealer selection
- Excellent compressive and flexural strengths
- Excellent abrasion properties
- Can be used for interior and exterior applications

### TYPICAL PROPERTIES

Properties	CHRYSO® Béton Ciré Finishing
Liquid: Powder Ratio	0.500 ml of Polymer 11 per 1 kg powder
Flow on Flow Table (BS EN 1015-3)	220 mm No Dropping 275 mm at 25 drops
Wet density	1680 kg/m <sup>3</sup>
Approximate Yield	25 kg powder + 12.5 litres polymer 11 = 22 litres i.e. 22 m <sup>2</sup> at 1 mm thick



Tools for primer



Tools for mixing and application



Helical Stirrer

### SURFACE PREPARATION

All surfaces are to be smooth clean and sound, free of oil, loose paint and contaminants that may impair the bonding properties of the product.

Ensure that surfaces are ground to a smooth finish and free of dust and dirt

Any sharp protruding points need to be ground off as these will reflect through the product due to the thin product application thickness.

The surface needs to be pre-wetted to obtain an SSD condition (surface saturated dry, no free water present) prior to applying the product.

## MIXING

1 part **CHRYSO® Polymer 11** for 2 parts **CHRYSO® Béton Ciré Finishing** (parts by volume) or 500 ml of **CHRYSO® Polymer 11** to 1 kg **CHRYSO® Béton Ciré Finishing**.

**Warning:** When mixing, first pour 80% of **CHRYSO® Polymer 11** into a clean mixing vessel, whilst stirring, slowly add the **CHRYSO® Béton Ciré Finishing** powder to the mix and thoroughly mix until a smooth lump free homogenous mix is obtained, thereafter add the 20% balance of the **CHRYSO® Polymer 11** and thoroughly mix to obtain the required consistency. Use a helical type mortar mixer.

## PRIMING

Apply **CHRYSO® Concrete Primer** to the surface by brush or short nap roller and allow to dry. Coverage approximately 7 - 10 m<sup>2</sup>/litre, two coats may be required subject to the surface profile and porosity.

Do not allow ponding or pooling of the primer.

## APPLICATION

First start by wetting substrate using a micro-fibre mop.

To the prepared, SSD surface (surface saturated dry - having no free water on the surface) apply **CHRYSO® Béton Ciré Finishing** and finish off as required.

Two coat application is always recommended to overcome any irregularities in the first coat, the application of each coat should be carried out at 90° to each other. The total application thickness must not exceed 1.6 mm. Should greater thicknesses be required, multiple layers may be applied, after light sanding and cleaning. The preceding layers must be dry.

Should a mixed batch in the mixing vessel dry do not re-temper the mix, it is recommended to discard and prepare a fresh batch.

Applying **CHRYSO® Béton Ciré Finishing** can be undertaken by using different techniques:

1. Metal Edge squeegee: ideal to treat wide surfaces for the first coat.
2. Trowel: This technique enables a burnished surface effect.
3. Magic Trowel: The extra-smoothing coating trowel will reduce a burnished surface effect. However, the product consumption may be higher.
4. Spray Application: For spray applications, typically using a spray hopper gun, you may need to add additional **CHRYSO® Polymer 11** to the **CHRYSO® Béton Ciré Finishing** powder to obtain the required consistency. The amount to be added must be tested as this will be a function of air pressure, nozzle size and the finish required.

## SEALING

A choice of sealers offered, water based, solvent borne and 2K systems.

The choice of sealer will depend upon the end use of application and environment the product is exposed to. This may include general or chemical resistant properties required of the finish. Always do a test sample of the sealer to ascertain the outcome as solvent borne sealers generally offer a darker finish opposed to water borne sealers. Sealer types are indicated under MAINTENANCE below.

## COLOUR

Standard available colours:

Silica, Dune, Pebble, Cobble, Sandstone, Terracotta, Limestone and Ash.

Other colours may be added to achieve the desired outcome, do not exceed 5% by weight of the **CHRYSO® Béton Ciré Finishing** powder content. Only use micronized pigments.

## APPROXIMATE COVERAGE (MIXED PRODUCT)

**CHRYSO® Béton Ciré Finishing** – 535 g/m<sup>2</sup> (±0.3 mm) to a maximum of 1.6 kg/m<sup>2</sup> for a 2 or 3 coat application.

Application rates may vary subject to surface profile, irregularities and absorption rates.

## MAINTENANCE

**CHRYSO® Béton Ciré Finishing** surfaces must be coated with an appropriate sealer. The condition of the sealer is to be examined periodically in order to determine whether there is any need for an additional wax or sealer coating.

## SEALERS

Refer to the sealer product data sheets, typically recommended to apply at least one coat **abe.® seal finisol** to the system as soon as the coat is touch dry. The next day you can apply your choice of Sealer. Typically **abe.®cote tough polyurethane paint** clear gloss or satin, **abe.®cote 441** clear gloss or matt. Note: The matt requires a primer first (Do not apply the **abe.®cote 441** clear matt directly to a cementitious substrate, it will turn white).

Consult your local **CHRYSO/a.b.e.® representative** for information on other sealers if required.

## HANDLING AND STORAGE

**CHRYSO® Béton Ciré Finishing** must be stored in a cool dry place. Lids of buckets must be tightly closed. **CHRYSO® Béton Ciré Finishing** has 12 months shelf life provided the product is sealed and protected from humidity.

## CLEANING OF EQUIPMENT

Tools, brushes and mixing equipment should be cleaned with water immediately after use and before material has set. Hardened material can only be removed by mechanical means.

## PROTECTION ON COMPLETION

Ensure the **CHRYSO® Béton Ciré Finishing** is not subjected to rain or draughts during the first 24 hours of curing as this may lead to dissolving of the polymer leaving white marks and/or cracking and crazing.

Tape up doorways with polythene if necessary to prevent air movement during application.

Subsequently ensure the room has sufficient ventilation to allow the overlay to dry.

Ensure adequate protection from other trades and traffic after installation, the surface must be free of dirt and dust before applying the decorative overlay.

## HEALTH AND SAFETY

Keep out of reach of children. Avoid contact with skin and eyes.

Wear appropriate protective equipment and clothing.

Product safety information required for safe use is not included. Before handling, read product and safety data sheets and container labels for safe use, physical and health hazard information. For more information, please refer to the material safety data sheet.

## PACKAGING

**CHRYSO® Béton Ciré Finishing** is available in plastic buckets: **5 kg (code: 91480 005)** and **25 kg (code: 91480 025)**

**CHRYSO® Polymer 11** is available in plastic jerry cans

**5 litre (code: 91404 005) and 25 litre (code: 91404 005)**

#### WARNING

**CHRYSO® Béton Ciré Finishing** is meant for use by trained and experienced professionals. Manufacturer's instructions must be strictly followed. Use of product on any worksite lies outside manufacturer's control and responsibility. Should a product however seem to be defective in spite of every care taken by the manufacturer, the manufacturer will only be held responsible for the cost of replacement of defective product. It is the responsibility of the person applying the product to determine suitability of use of the product prior to application and to bear any risks sustained from any erroneous prior analysis or use. Before proceeding to any application, please refer to the systems and process technical information.

#### IMPORTANT NOTE

This data sheet is issued as a guide to the use of the product(s) concerned. Whilst **a.b.e.® Construction Chemicals** endeavours to ensure that any advice, recommendation, specification or information is accurate and correct, the company cannot – because **a.b.e.®** has no direct or continuous control over where and how **a.b.e.®** products are applied – accept any liability either directly or indirectly arising from the use of **a.b.e.®** products, whether or not in accordance with any advice, specification, recommendation, or information given by the company.

#### FURTHER INFORMATION

Where other products are to be used in conjunction with this material, the relevant technical data sheets should be consulted to determine total requirements.



DATE UPDATED: 03/06/2021

a.b.e.® is an ISO 9001:2015 registered company  
Registration Number: 1982/005383/07  
101 Main Reef Road, Boksburg North, 1459  
PO Box 5100, Boksburg North, 1461

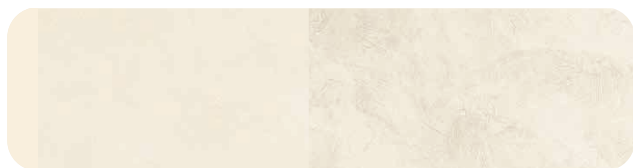
a.b.e.® Construction Chemicals (Pty) Ltd  
is a CHRYSO Group Company

**CHRYSO**

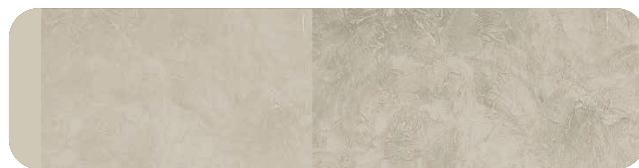


## CHRYSO® Bèton Ciré Finishing COLOUR CHART

These colours are provided as a guidance only and exact colour matches will be dependent on the surface condition.



**silica**



**dune**



**pebble**



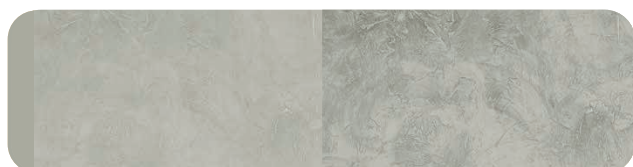
**cobble**



**sandstone**



**terracotta**



**limestone**



**ash**

DATE UPDATED: 03/06/2021