

Terrace Blok®

TB 300
TB 490

The Aveng Infraset Terrace Blok® TB 300/490 system has unique features that firmly establish it as a market leader.



Product features

The Aveng Infraset Terrace Blok® system has unique features that firmly establish it as a market leader.

Economical - Seven blocks per square metre.

Open or Closed Face Options - by using a unique slider that fits easily between the blocks.

Plantability - it's open bottom-hole design and trough shape create a greenhouse effect within the environs of the block. This promotes rapid healthy plant growth with unrestricted root systems that aid in the stabilisation of the bank.

Quality - this product is manufactured under ISO 9001:2000 requirements and carries a full manufacturer's warranty.

Testing - backed by full-scale tests conducted by independent geotechnical engineers, every aspect of Terrace Blok® has been checked to establish the design integrity of the system.

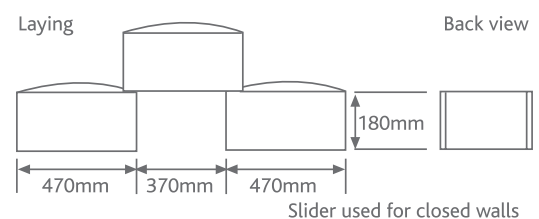
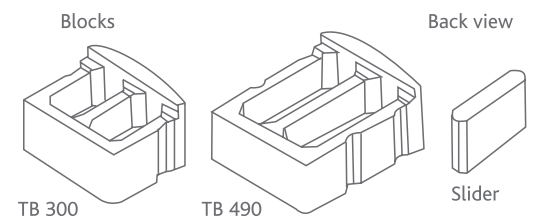
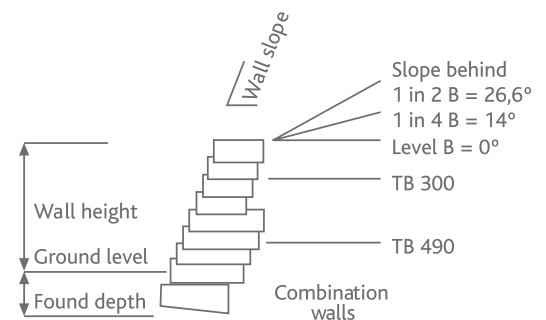
Cautionary Note:

- The design of dry-stack concrete retaining systems involves geotechnical rather than structural elements.
- Check with your local authorities regarding their requirements for the design, plan submission and stability certification of your retaining structure before commencing construction.
- This leaflet serves as a guideline not a guarantee. For specific applications please make use of our free technical service.

Terrace Blok® TB300/490 is available in Grey.

Colours can be made to order – quantity dependant.

Please note that sliders must be ordered seperately.



Technical Data	TB 300	TB 490
Mass per block	40 kg	49 kg
Length	300mm	490mm
Width	470mm	470mm
Height	180mm	180mm
Number of blocks per m ²		
- Straight line	7	7
- Curved structures	8-9	8-9
Standard wall angle	75°	75°
Engineered options	55°/ 75°	55°/ 75°
KwaZulu-Natal dimensions and weights vary from those shown above. Please ask for a TB 300/500 leaflet.		