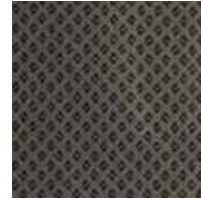


Serengeti.



Mabula



Mamba



Phinda



River Sand



Tembe



Wild Cheetah

Serengeti | River Sand

Serengeti is the perfect option for those projects requiring a touch of African flavour. The distinctive paw-print pattern evokes memories of Africa's unique natural heritage.

Product Information

Serengeti is a plush cut-pile carpet that is ideally suited to heavy-commercial use. The Stainproof SDX (Solution Dyed Nylon) fibres that make up a Serengeti carpet provide superior colour fastness and resistance to

stains and soiling. Serengeti carpets are extremely durable and easy to maintain. The Serengeti range is available in a variety of contemporary colourways that reflect the current décor trends.

BILL OF QUANTITIES:

- Belgotex SERENGETI 4m broadloom is manufactured from Stainproof SDX & Stainproof Eco SDX Blend (Solution Dyed Nylon).
- This product is to be laid in accordance with the SANS 10186 fitting code of practice.
- Belgotex recommends the use of carpet protector mats where castor wheels are used.

Extended Specifications



Construction	Tufted Patterned Cut Pile
Product Description	Heavy Commercial, SDN, Tufted Broadloom
Yarn Type	Stainproof SDX & Stainproof Eco SDX (Solution Dyed Nylon)
Yarn Mass	1200g/m ²
Recycled Content	Pile Yarn (Certain Colours Only)
Use Classification	Heavy Commercial
Pile Height	7mm (±0.5mm)
Total Thickness	9.5mm (±0.5mm)
Total Mass	±2365g/m ² **
Width	4m
Machine Gauge	1/10"
Pattern Repeat	±25mm x ±25mm (W x L)
Stitches/10cm	44
Fire Index	2 (SANS 10177-IV)
Colour fastness to:	
(i) Light	7 (ISO 105-B02)
(ii) Rubbing	(a) Wet 4-5 (ISO 105-X12)
Rubbing	(b) Dry 4-5 (ISO 105-X12)
(iii) Water	4-5 (ISO 105-E01)
Electrostatic Propensity	Less than 2.0kV (ISO 6356 & EN1307)
Static Control	Permanent
VOC Tested	Passed