

CYBERFLOOR

INTELLIGENT ACCESS FLOORING

Specifications File

Intelligent Office Space

Concept

The concept behind CyberFloor arose from a recognition of the changing needs of modern workplaces. Traditional flooring systems often failed to meet the demands for flexibility and efficiency in cable management, which is critical in today's technology-driven office environments.

CyberFloor was developed to provide a solution that integrates seamlessly with contemporary office designs while offering unparalleled cable management capabilities.

By addressing these key aspects, CyberFloor was designed to offer a practical, efficient, and future-proof solution for modern office environments, providing the flexibility and reliability that traditional systems lacked.

CyberFloor is your natural selection for effective wire management in intelligent office space. The system is a low-profile access flooring product that is under 60mm high, including carpeting.

This makes CyberFloor perfect for new buildings or retrofitting existing buildings without incurring additional building expenses.



Specifications

The system consists of non-metal ABS(with an added fire retardancy) injection molded pedestals that clip into a soft foot, creating channels running at 166mm centers.

A quantity of 36 pedestals forms a square meter, dissipating the concentration of weight on the subfloor and are spaced to accept the undulations of power-floated concrete within normal building tolerances. The pedestals are 166mm square, 9 of which, form a 50mm high support base for a 500mm by 500mm carpet tile. The weight of the system is under 15kg per square meter.



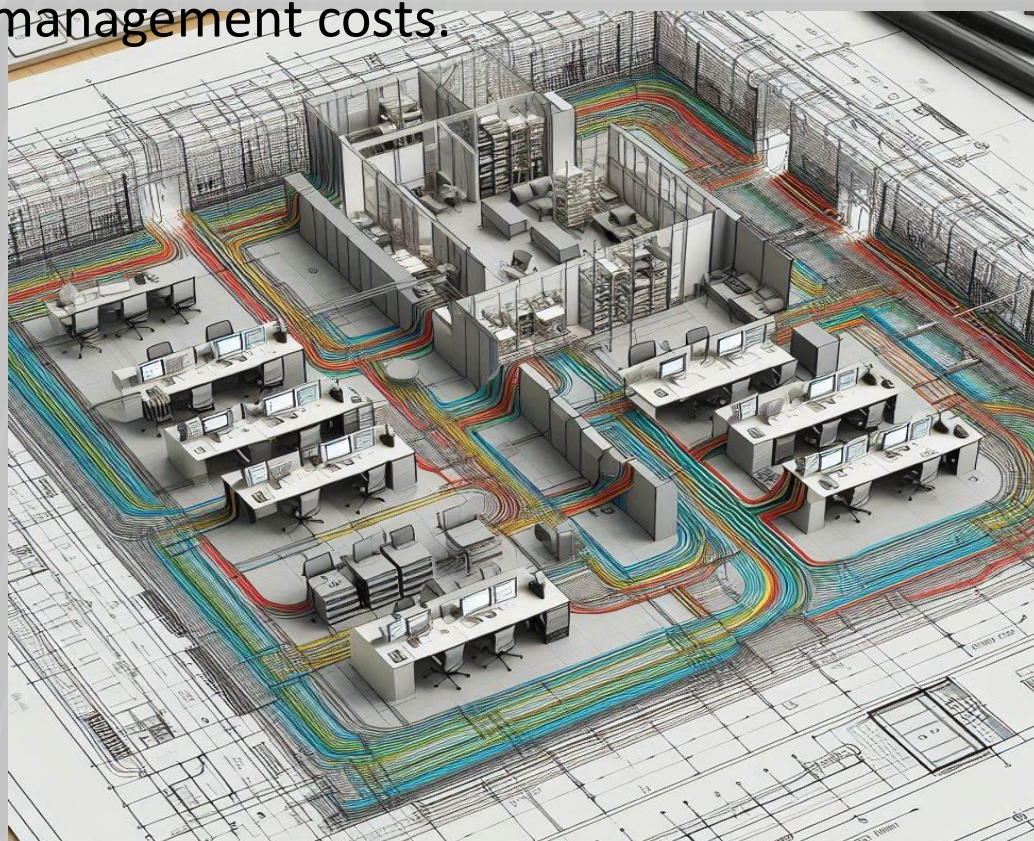
Cable Management & Workspace Reconfiguration

Future-Proof

The workplace is changing at a relentless pace, driven by digital technologies. Often, the costs involved in reconfiguring the electronic working environment inhibit the natural growth of departments and divisions. CyberFloor is a readymade answer to cable management.

Reshaping

Cyberfloor gives you unlimited cable management capabilities, providing easy access and movement possibilities without disrupting the workspace or causing downtime. This will in turn significantly reduce your costs of workspace reconfiguration and improve your bench-marking on general facilities management costs.



Plug 'n Play Logic

Cyberfloor allows for a compact modular wiring system for power & data. The fundamental concept of the system is the ability to run cables from the source to plug box hubs under the floor. From there a plug 'n play logic is applied using computer standard, quick connect plugs.

Power Hubs

Power and data where you need them, when you need them. The plug box units hardened lid protects cables against damage



Plug box lid folds away leaving power and data access neat and unobtrusive



Anti-Static Properties

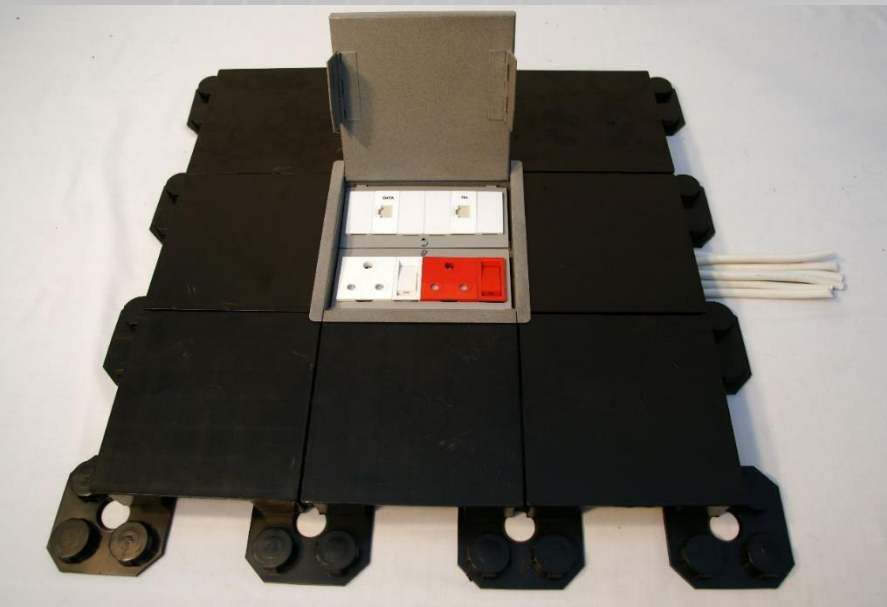
CyberFloor complies with DIN 66095 Par 4 with regard to antistatic properties (SABS Re. 5526/1403611/E1/R801) when tested in accordance with DIN 54345 Part 2 with an earthed CyberFloor electrical box. Test reports are available on request

Installation & Requirements

Cyberfloor installs as easily as laying carpet. The system allows for maximum flexibility and adapts easily to all spaces.

Any flooring finish can be selected for use with Cyberfloor, however, we suggest a good contract carpet that complies with fire grade SABS 0400.

Cyberfloor can be laid over existing carpet. The system is clipped together using a soft foot, which interfaces with the building structure. This soft foot allows the system to be self-leveling. The system is not fixed in any way to the building structure and may be removed and reused readily at other premises. The system may be lifted at any time for access to under-floor services.





FIRE RATING

CyberFloor is certified by the CSIR as deemed to comply with SABS 0400 with respect to fire ratings.

Full scale fire tests show that CyberFloor does not propagate fire even when used in conjunction with polypropylene carpets.

(CSIR Ref. 59869/32)

LOAD TESTING

Static Loading	200kg
Caster Load (25x5mm)	100kg
Caster Load (50x5mm)	200kg
Uniform Load/Sqr meter	7200kg
Impact Strength (kg/cm)	250kg

All load testing has been conducted in controlled laboratory conditions at the University of the Witwatersrand. In each case a factor of safety of 2 has been applied

A Brief Client List

➤ African Merchant Bank	Sandton	➤ Neotel	Woodmead
➤ ADT	Brooklyn	➤ Nkangala District Municipality	Middelburg
➤ Anchor Yeast	Industria	➤ Oprah Winfrey Leadership Academy	Henley-on Klip
➤ Capricorn District Municipality	Polokwane	➤ Polytechnic of Namibia [Phase 1]	Windhoek (Namibia)
➤ CISS-IT Surveillance	Ferndale	➤ Polytechnic of Namibia [Phase 2]	Windhoek (Namibia)
➤ CSIR	Pretoria	➤ Rawlins Wales & Partners	Linbro Park
➤ De Beers [Venetia Mine]	Messina	➤ Royal Swazi Insurance Company	Mbamabe
➤ Dynamic Wealth	Pretoria	➤ Sanlam	Pretoria
➤ Drive Control Corporation	Linbro Park	➤ S A Post Office – Church Square	Pretoria
➤ Ernst & Young	Maputo (Mozambique)	➤ S A Post Office – Head Office	Pretoria
➤ Faritec Holdings	Sandton	➤ S A Roads Agency	Bronkhorstspuit
➤ Fedsure Health	Sunninghill	➤ Technology Concepts	Rivonia
➤ Gauteng Provincial legislature	Johannesburg	➤ Telkom	Durban
➤ G S Telecom	Sandton	➤ TFMC	Centurion
➤ Hartebeesthoek Radio Astronomy Observatory	Johannesburg	➤ Universal Church of the Kingdom of God	Johannesburg
➤ Highgrove Office Park	Centurion	➤ University of Fort Hare I T Centre	Bisho
➤ Johannesburg Teachers Training College	Johannesburg	➤ Venetia Mine (De Beers)	Johannesburg
➤ MTV	Johannesburg (Hyde Park)	➤ Wits University I T Training Centre	Johannesburg
➤ Namakwa Sands (Anglo American)	Lutzville	➤ Women’s Jail (Historic renovation)	Johannesburg