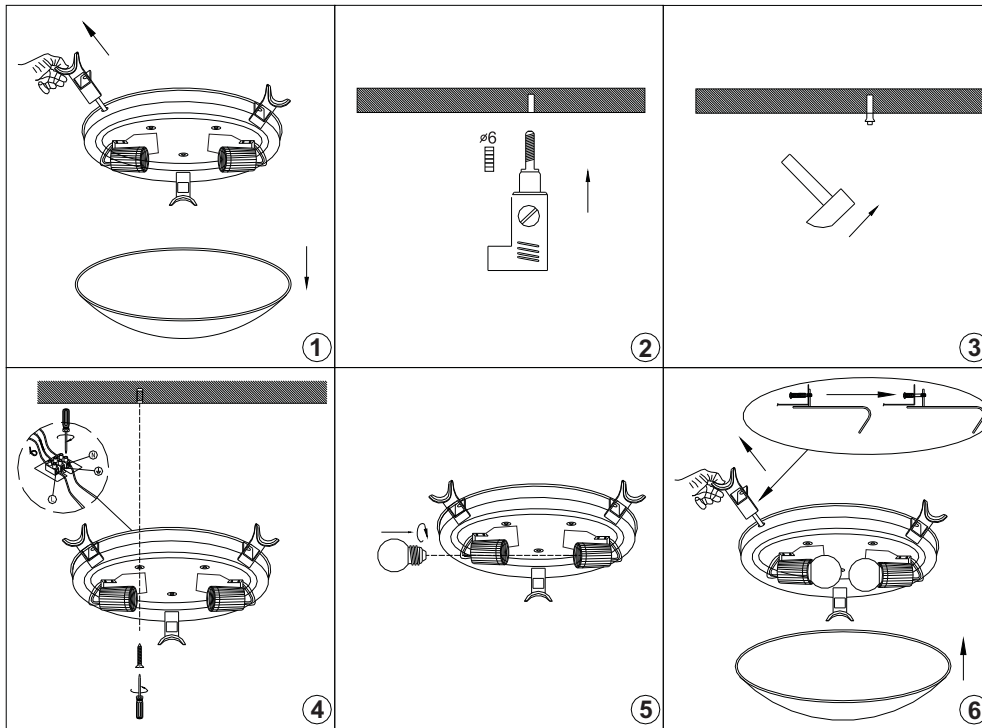


ILLUSTRATIONS



ENVIRONMENTAL PROTECTION

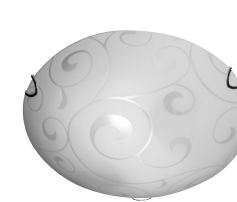


Waste electrical & Electronic equipment regulations requires that any of our products showing this marking must not be disposed of with other household or commercial waste. To prevent possible harm to the environment or human health from uncontrolled waste disposal, please separate any such products from other waste types and recycle it responsibly at your local facilities.

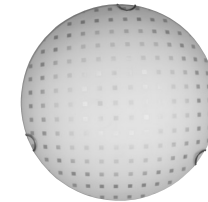
eurolux

Lighting your way

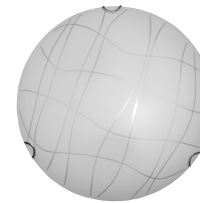
Ceiling Lights



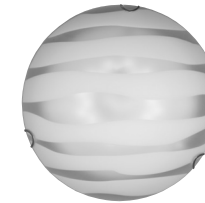
C396



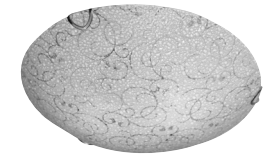
C397



C398



C399



C400

C396, C397 C398, C399, C400: Excluding 2 x E27 max 40W 230V

PRODUCT CODE

C396 / C397 / C398 / C399 / C400

Cape Town - 9 Racecourse Road, Milnerton, 7441
Johannesburg - 10 Milkyway Avenue, Linbro Business Park, Sandton, 2065
www.eurolux.co.za

Please read instructions before commencing installation and retain for future reference.

SPECIFICATIONS

- **Fitting material:** Steel with Opal Glass.
- **Lamp type:** C396, C397, C398, C399, C400: Excluding 2 x E27 max 40W 230V.
- **Voltage:** 220V - 240V ~ 50Hz.
- **Protection against electric shock:** Class 1.
- **IP Rating:** IP 20.
- Commercial / Domestic use.
- Not suitable for outdoor use.
- Not for use in areas exposed to moisture.
- Non Dimmable.
- **Maximum ambient temperature range:** 20°C - 40°C.
- **Dimensions:**
C396, C397, C398, C399, C400: (D)80mm x (Ø)300mm.

IMPORTANT SAFEGUARDS

C396 / C397 / C398 / C399 / C400 - attachments:

If the external flexible cable or cord of this luminaire is damaged, it should be exclusively replaced by the manufacturer or his service agent or a similar qualified person in order to avoid a hazard. To ensure that you get maximum longevity and maximum use out of your luminaire, please observe the following safety instructions.



Electrical products can cause death, injury, or damage to property. Installation of the luminaire must be carried out by a qualified electrician, in accordance with SANS 10142. On completion of installation, ensure that the Certificate of Compliance is updated.

- Before connecting this luminaire, ensure that voltage indicated on the rating label corresponds with the mains voltage in your home.
- When changing the lamp, ensure that the power is turned off.
- This luminaire is checked in full for conformity to the quality standards and safety requirements.
- The manufacturer / supplier is not responsible for any damage of properties and persons, caused by the incorrect use or installation of the luminaire.
- Should you be unsure of how to install this luminaire correctly, please consult a professional electrician or your supplier for assistance.
- Ensure all items / components, threads and screws are tightly secured.

IMPORTANT:

- Tampering with this luminaire, i.e. using silicon sealers or incorrect cabling, will invalidate your warranty.
- When the protection glass is damaged, it should be replaced immediately. The luminaire must not be used without the protection glass.
- Please check whether the connection of the power cord is safe and reliable before installation.
- Always ensure that the mains supply voltage is correct.
- Always replace the lamp with one of an identical rating.
- Ensure that you do not place the luminaire near any combustible materials and / or surfaces.
- Choking hazard: May contain small parts. Keep away from children.

- Do not insert your fingers or any part of your body into the electrical contact and sockets of this product whilst it is connected to the electricity supply.
- Item may vary slightly from the picture on the carton.
- Coastal humidity may effect the longevity of the luminaire.
- Outdoor luminaires must be cleaned to prevent rust occurring.

CLEANING

- Before cleaning always ensure the power supply is turned off.
- Do not immerse the luminaire in water.
- No abrasive products, solvents, detergent may be used to clean this luminaire.
- Ensure that the fitting does not come in contact with corrosive chemicals, etc.
- Coastal areas ensure that the luminaire is cleaned fortnightly.

INSTALLATION

- Switch the power supply off before commencing with the installation.
- When drilling is required for fixing the luminaire to the required surface please ensure that no pipes or cables are within the drilling area.
- Reconnect power supply.