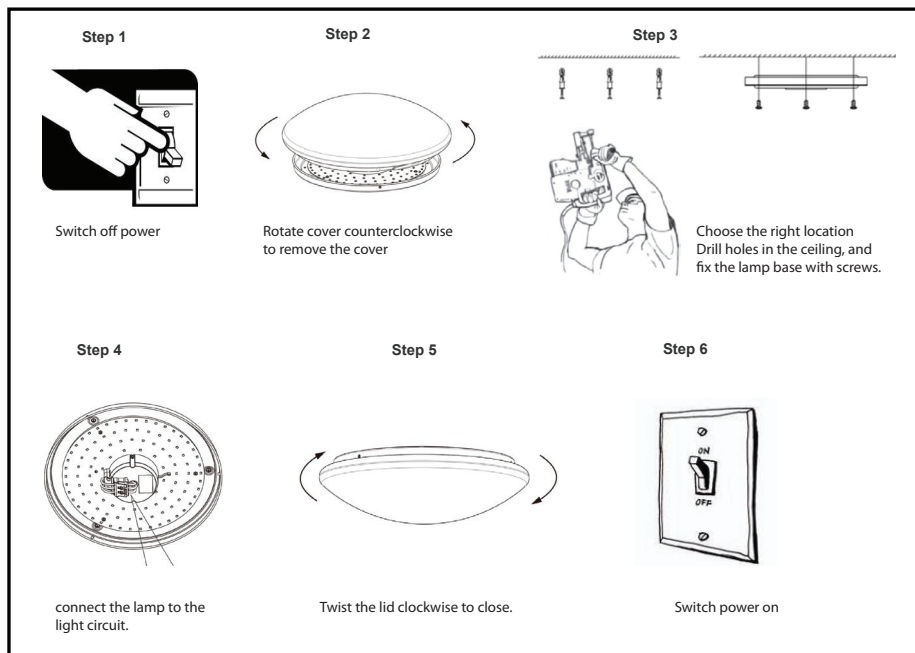


ILLUSTRATIONS

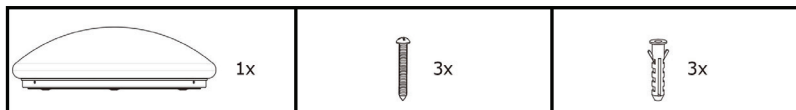
Instructions

- Installation and connection of ceiling light must done by a qualified electrician.
- LED ceiling light intended for indoor use.
- Recommended mounting height is 2.3m to 3.8m.
- LED ceiling light is a Class 2 product, no need for grounding wire.

How to install



Parts



ENVIRONMENTAL PROTECTION



Waste electrical & Electronic equipment regulations requires that any of our products showing this marking must not be disposed of with other household or commercial waste. To prevent possible harm to the environment or human health from uncontrolled waste disposal, please separate any such products from other waste types and recycle it responsibly at your local facilities.

eurolux
Lighting your way

12W / 18W / 24W LED Ceiling Light



C547



C551



C554



C555



C556

C551, C554 :Including 1 x 12W Replaceable LED 230V

C555 :Including 1 x 18W Replaceable LED 230V

C547, C556 :Including 1 x 24W Replaceable LED 230V

PRODUCT CODE

C551 / C554 / C555 / C556

Cape Town - 9 Racecourse Road, Milnerton, 7441
Johannesburg - 10 Milkyway Avenue, Linbro Business Park, Sandton, 2065
www.eurolux.co.za

Please read instructions before commencing installation and retain for future reference.


SPECIFICATIONS

- **Fitting material:** LED Ceiling light with Opal PMMA Acrylic lens.
- **Class:** Class 2
- **IP Rating:** IP 20
- **Voltage:** 220V - 240V ~ 50Hz
- Commercial / domestic use
- **Dimensions:** C551, C554: (Ø)255mm x (D)85mm
C555: (Ø)285mm x (D)85mm
C547, C556: (Ø)325mm x (D)85mm
- **Lamp type:** C551, C554: Including 1 x 12W Replaceable LED 230V
C555: Including 1 x 18W Replaceable LED 230V
C547, C556: Including 1 x 24W Replaceable LED 230V
- **Replaceable LED Modules available:**G1016 - 12W Cool & Warm White
G1017 - 18W Cool & Warm White
G1018 - 24W Cool & Warm White

IMPORTANT SAFEGUARDS

C551 - attachments:

If the external flexible cable or cord of this luminaire is damaged, it should be exclusively replaced by the manufacturer or his service agent or a similar qualified person in order to avoid a hazard. To ensure that you get maximum longevity and maximum use out of your luminaire, please observe the following safety instructions.

 Electrical products can cause death, injury, or damage to property. Installation of the luminaire must be carried out by a qualified electrician, in accordance with SANS 10142. On completion of installation, ensure that the Certificate of Compliance is updated.

- Before connecting this luminaire, ensure that voltage indicated on the rating label corresponds with the mains voltage in your home.
- When changing the lamp, ensure that the power is turned off.
- This luminaire is checked in full for conformity to the quality standards and safety requirements.
- The manufacturer / supplier is not responsible for any damage of properties and persons, caused by the incorrect use or installation of the luminaire.
- Should you be unsure of how to install this luminaire correctly, please consult a professional electrician or your supplier for assistance.
- Ensure all items / components, threads and screws are tightly secured.

IMPORTANT:

- Tampering with this luminaire, i.e using silicon sealers or incorrect cabling, will invalidate your warranty.
- When the cover is damaged, it should be replaced immediately. The luminaire must not be used without the cover.

- Please check whether the connection of the power cord is safe and reliable before installation.
- Always ensure that the mains supply voltage is correct.
- Always replace the lamp with one of an identical rating.
- The LED Module is replaceable.
- Ensure that you do not place the luminaire near any combustible materials and / or surfaces.
- Choking hazard: May contain small parts. Keep away from children.
- Do not insert your fingers or any part of your body into the electrical contact and sockets of this product whilst it is connected to the electricity supply.
- Item may vary slightly from the picture on the carton.
- Coastal humidity may effect the longevity of the luminaire.

CLEANING

- Before cleaning always ensure the power supply is turned off.
- Do not immerse the luminaire in water.
- No abrasive products, solvents, detergent may be used to clean this luminaire.
- Ensure that the luminaire does not come in contact with corrosive chemicals etc.
- Coastal areas ensure that the luminaire is cleaned fortnightly.

INSTALLATION

- Before installation always ensure the power supply is turned off.
- This luminaire is only suitable for fixed mounting.
- Not for use outdoors or in areas exposed to moisture
- Insert masonry plugs into the mounting surface. Test to ensure the mounting surface will hold the weight of the fitting.
- Connect main supply into terminal block making sure all connections are tight.
- Fit ceiling plate onto mounting surface with self-tapping screws.
- Fit lamp firmly into lampholder.
- Make sure all connections are tight.
- Fit glass shade onto ceiling plate by securely placing it into mounting clips.
- Reconnect power supply.