




GYPROC SOUND RESISTANT WALL SYSTEM

Details are NOT PROJECT SPECIFIC and need to be approved by a project professional before use to ensure that they meet with the specific project requirements. DRAWINGS NOT TO BE MODIFIED OR SCALED to suite without approval. **DRAWINGS FOR INFORMATION ONLY.** Construction concept only which is applicable to any Stud size and Board type. The detail should be read in conjunction with Saint-Gobain current literature available on www.gyproc.co.za. Systems need to be built to full height from structural floor to structural soffit to achieve fire and acoustic performance.

Gyproc Sound Resistant Wall System 70AS50F60S63RB2

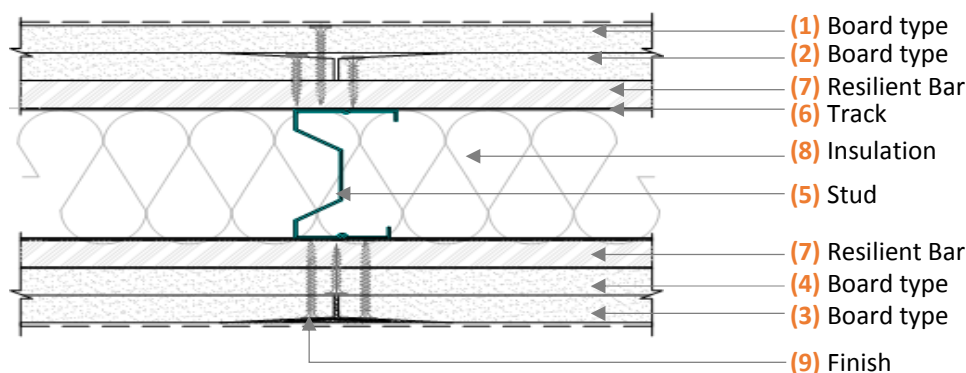
			Stud Spacing (centres)	Max Height (L/250 @ 200Pa)	System Nominal Thickness	Framework Height	Cladding Height	Duty Rating	Deflection allowance
60 min	Rw 63 dB	47 kg/m ²	300 mm	-	152 mm	To underside of structural soffit	Full height	Severe	None
			400 mm	-					
			600 mm	3200 mm					

System Overview

Side 1 consisting of outer layer RhinoBoard® SoundBloc® 12.5 mm (1), inner layer RhinoBoard® SoundBloc® 12.5 mm (2). Side 2 consisting of outer layer RhinoBoard® SoundBloc® 12.5 mm (3), inner layer RhinoBoard® SoundBloc® 12.5 mm (4), (locally manufactured, ISO 9001 & 14001 certification, recycled paper content, Ecospecifier, Greentag level B listing, non-combustible to SANS 10177-5) fixed to both sides of the frameworks using Gyproc Sharp-point Screws 25 mm (base layer) and Gyproc Sharp-point Screws 42 mm (face layer) at maximum 220 mm centres. 70 mm Gypframe® UltraSTEEL® Acoustic Studs (5) friction fitted into top and bottom Gypframe® UltraSTEEL® Tracks 72 x 0.5 mm (6) at 600 mm centres. Floor and head track fixed with one line of proprietary fixing spaced at maximum 600 mm centres. 2x Gypframe® Resilient Bar 16 mm x 0.45 mm (7) are fixed to both sides of the studs at 600mm vertical centres. Gypframe® UltraSTEEL® Deep track shall be used for both floor and head track. Apply Gyproc RhinoTape® to all joints and internal corners. Install Gypframe® Corner Bead to all external corners. Install 63 mm Isover Cavitybatt™/Cavitylite® into frameworks with joints tightly butted, leaving no gaps (8). For Skimmed Finish: Cover entire drywall surface with 1 layer of Gyproc RhinoLite®. For Jointed finish: Cover Gyproc RhinoTape® with 2 coats of Gyproc RhinoGlide® (9) (locally manufactured). Apply sealant (supplied by others) between the building structure and the drywall framework. Bulk fill the gaps at the base of the drywall and any gaps exceeding 5 mm using Gyproc RhinoLite® or Gyproc RhinoGlide®. No skimmed finish and jointed finish required when tiling. Reduce stud spacing's to 400 mm centres when tiling.

System Details

Downloadable BIM files can be found at Saint-Gobain BIM Library: <https://bimlibrary.saint-gobain.com/>



For system heights exceeding 4200 mm, use Gypframe® UltraSteel® Deep Track for both floor and head tracks. For systems with expected deflection of >10 mm and <4200 mm height, use Gypframe® UltraSteel® Deep Track for head tracks only. Details shown are subject to accuracy of information provided to Saint-Gobain at the time the drawings were originally requested. No duty of care is owed to the recipient or any other third party and Saint-Gobain does not accept any liability in respect of details shown. This Saint-Gobain system detail must not be used without a complete evaluation by owner's design professional to verify the suitability of its use with your specific application. **The detail should be read in conjunction with Saint-Gobain current literature.** Refer to literature and clauses at <https://www.gyproc.co.za/>.