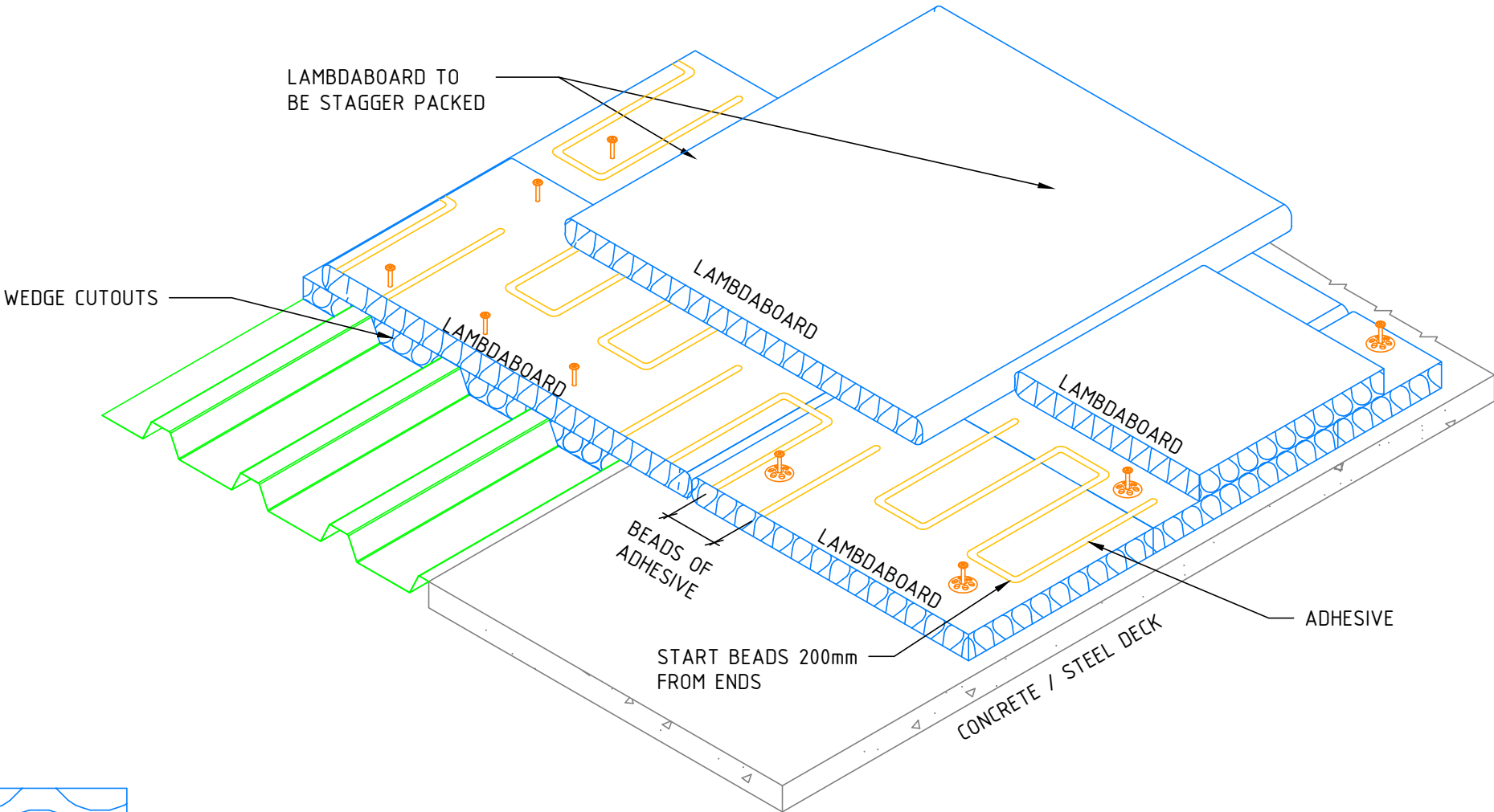
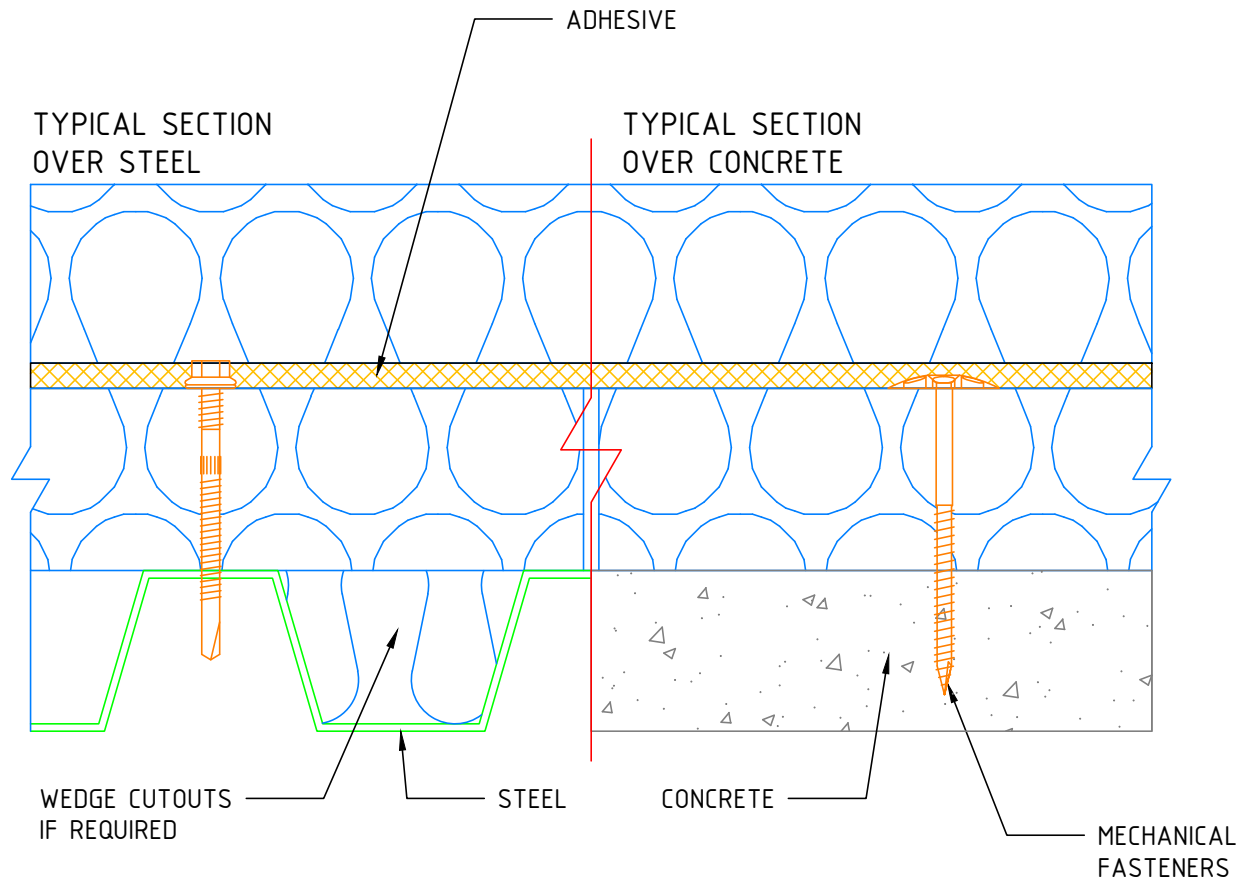


INSTALLATION NOTES:

- A. ALL LAMBDABOARD TO BE STAGGER PACKED.
- B. WHEN APPLYING MULTIPLE LAYERS OF INSULATION, IT IS REQUIRED TO RUN THE BEADS PERPENDICULAR TO THE PRECEDING LAYER WHEN USING PU ADHESIVE



ISOMETRIC VIEW  
N.T.S.



SECTION VIEW  
N.T.S.

ALL LAMBDABOARD TO BE STAGGERED PACK OVER 50mm

TITLE: LAMBDABOARD  
STAGGERED PACK

Rigifoam T/A Lambdaboard  
3 Detroit Street, Apex,  
Benoni, 1501  
Tel: 011 110 9899  
www.rigifoam.com  
info@rigifoam.com



Paper Size:	A3	Rev. 0
Drawing No:	APD-W-C-009	
Drawn by:	Y. Odendaal	
Checked by:	B. Burger	
Approved by:	L. Jeffery	
This drawing is the property of RIGIFOAM.		