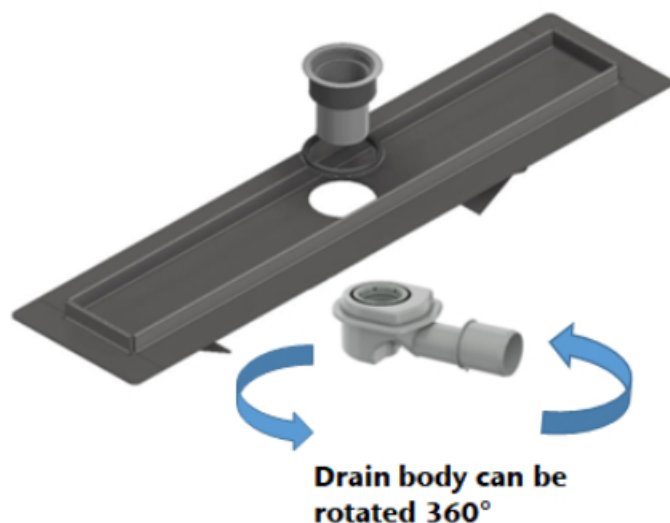


## ShowerDrain M250 channel



### Standard outlet range



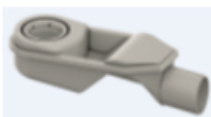
**Code: 9010.81.20**

Description: Horizontal outlet; Installation height 100-128mm;  
Trap 50mm



**Code: 9010.81.21**

Description: Horizontal outlet; Installation height 80-128mm; Trap 30mm;



**Code: 9010.81.22**

Description: Horizontal outlet; Installation height 54-128mm; Trap 25mm



**Code: 9010.81.23**

Description: Vertical outlet; Installation height 15-128mm; Trap 50mm

### Channel information

**Channel body:** Stainless steel

**Gully body:** Plastic

**Load class:** K3

**Internal channel width:** 80 mm

**Minimum building height:** 54 mm with inclination 1,5°

**Flow rate:** 0,4 l/s (with 10 mm build-up)

0,46 l/s (with 20 mm build-up as per  
EN 1253-1)

**Outlet socket:** Suitable for all push-fit pipe socket systems

**Mounting:** Modular assembly system  
consisting of channel body, screwed gully  
body and design grating body, screwed  
gully body and design grating

**Flange types:** Surrounding, wall flange

**Socket version:** ND 40/ND 50

**Foul air trap:** One-piece with removable submersible pipe  
**Flexible for any installation situation**