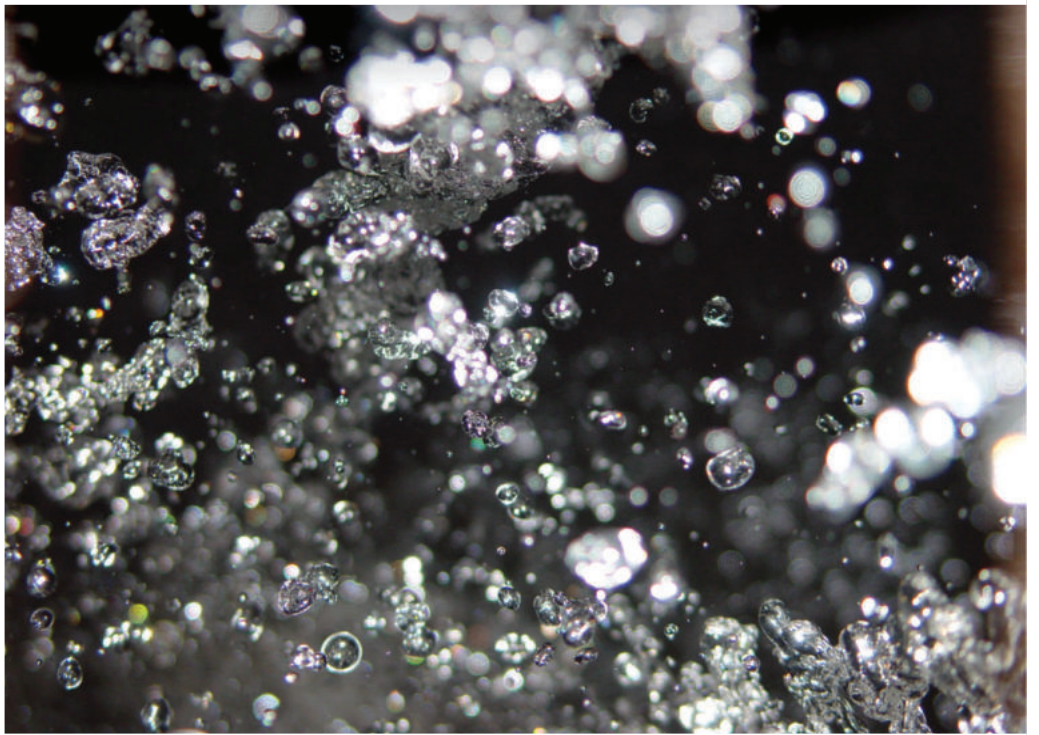





seaqual



www.seaqual.co.za | 2024



CONTENTS

Product Certification	1	RainDrain Nylon	20
Product Quick Reference	2	RainDrain Lite	21
Full-bore BalconyDrain	4	Ceiling Saver	22
Full-bore HyDrain	6	HiddenHatch	23
Full-bore HyDrain 160	8	 EezyPlumb	24
 TrapMate	9	BuddyBats	26
WetFloor Drains	10	BuddyClips	27
Grate & Waste	15	 QualiDrain	28
LoLo Drains	16	4All Channel Drain System	30
VitylDrains	18	About Seaqual	32



Introduction

A guide to selecting and specifying Seaqual Products. Seaqual's range can be divided into 5 categories: Floor Drains, Waste Traps, Long-term Cost-saving Products, Pipe Anchors and Channel Drainage systems.

Floor Drains

The two stage installation system developed for our floor drains results in cost savings and achieves a neat finish. The 1st Fix pack, comprising the body of the drain, can be purchased on its own and installed during the early wet work building stage using our "dust cover" to protect the inlet point. During the finishing stages of construction, one of our 2nd Fix packs comprising a Well Trap (if needed), Position Outlet and Grate (various options), can be purchased and installed with minimal fuss. We also provide floor drains as complete units.

- **1st Fix packs:** See WetFloor & Balcony 1st Fixes, HyDrain 1st Fixes, VitylDrain 1st Fixes. WetFloor, Balcony & HyDrain 1st Fix Packs can be used with any of the Seaqual 2nd Fix Packs, while VitylDrain 1st Fix Packs are only compatible with VitylDrain 2nd Fix Packs.
- **2nd Fix Packs:** See WetFloor, Balcony, HyDrain & VitylDrain 2nd Fix Packs. Most 2nd Fix Packs are compatible with the BalconyDrain 1st Fix 75 mm Side Outlet Low Profile. As stated, VitylDrain 2nd Fix Packs may only be used with VitylDrain 1st Fix Packs.

- **Complete units:** Seaqual now offers a range of complete floor drains – see WetFloor 304, BalconyDrain Complete, HyDrain Complete & LoLo Drain.

The floor drains can be sub-categorised as internal floor drains, external floor drains and dual-purpose floor drains. If a dual-purpose floor drain is used outside, the Well Trap is unnecessary and must be discarded.

- **Internal floor drains:** WetFloor Drain / LoLo Drain / VitylDrain.
- **External floor drains:** BalconyDrain / HyDrain / RainDrain.
- **Dual-purpose floor drains:** LoLo Drain / Grate & Waste.

Waste Traps

Seaqual manufactures its own P-trap and an S-extension for use below sinks, showers and basins under the following trade names:

- **TrapMate:** This kit includes a 40mm P-trap, 38mm connector & 32mm insert reducer for use in sinks, showers & basins.
- **S-bend Extension:** Now available for plumbers to create a quality S-trap.
- **EezyPlumb:** The innovative, space-saving and unique multi-functional Plumbing Connection Hub.

Long-term Cost-saving Products

- **Ceiling Saver:** Prevents water damage during vacuum-breaker failure.
- **HiddenHatch:** 'Tileable' access hatch allows easy access for maintenance.

Pipe Anchors

Our pipe anchors are simple to use and come in a wide variety of sizes and colours. Choose between:

- **Plumbing pipe anchors:** BuddyBats, and
- **Electrical pipe anchors:** BuddyClips

Channel Drainage Systems

We manufacture an innovative channel drainage system called QualiDrain. We also import a simple, yet effective, channel drainage system from Mufle® in Italy. The available products are:

- **Garage Packs:** See QualiDrain & 4All Garage Packs.
- **Channels & Grates:** See QualiDrain and 4All Channels & Grates.
- **Accessories:** See QualiDrain, 4All DrainBoxes and 4All Kits.

SABS
ISO 9001

AGRÉMENT
SOUTH AFRICA
Innovative construction product assessments

Product Certification



Agrément South Africa

In 2016, Seaqual spent 11 months undergoing a grueling and thorough assessment process to receive an official certification from Agrément South Africa for our WetFloor & Full-bore range of products.

As defined on their website; “Agrément SA is an independent organisation that evaluates the fitness for purpose of non-standardised building and construction products and systems by applying performance-based criteria in its assessment procedure.”

When using the term “non-standardised” they are referring to a system or product for which there is no applicable South African Bureau of Standards (SABS) regulation. When there are new product innovations that do not fall under the existing SABS codes of practices then Agrément SA bridges the gap by validating that product’s compliance with regulations through a series of assessments. This allows companies to still receive official recognition and certification for their product inventions.

Our WetFloor Drain removable Well Trap is one such example. This device is a fantastic replacement to the standard P-traps on the market. It has a rubber seal around the edge that gives it a snug and leak-proof seal when fitted into the F-box. The Well Trap can be removed and separated into two parts making cleaning and maintenance an easy process. This is just one of many problem-solving features our products have to offer.

Attaining certification has enabled Seaqual to provide its customers with peace of mind that our drainage products are fit for purpose and accepted for use by Government and Municipalities throughout South Africa.



Certified Products:

- HyDrain & HyDrain 160
- BalconyDrain



Certified Products:

- WetFloor Drain
- LoLo Drain



These certifications can be viewed under the “All Certificates” section on Agrément’s website.

Visit <https://agrement.co.za/> or scan the QR code above to view our active certificates.

Specification & Product Drawing Formats

Technical Data Sheets, high-resolution photographs and drawings in various formats including CAD, Revit & PNG are available for each of our products to assist with specification processes and requirements.

Product Training Videos



Our videos can be viewed under the “Product Videos” tab on our website.

Visit <https://seaqual.co.za/pages/product-videos> or scan the QR code to the left.

PRODUCT DESCRIPTION	AGRÉMENT CERTIFIED	QUALITY CHECKED	SEAQUAL MANUFACT.
FULL-BORE BALCONY DRAIN RANGE			
First Fix Packs F-Box & Flange (50mm & 75mm outlets)	✓	✓	✓
Second Fix Packs Grate & Outlet (110mm & 200mm sizes)	✓	✓	✓
Complete Packs (50mm, 75mm & 110mm outlets)	✓	✓	✓
FULL-BORE HYDRAIN RANGE (used predominantly on flat concrete roofs)			
First Fix Packs (50mm & 75mm outlets)	✓	✓	✓
Second Fix Packs (110mm outlet)	✓	✓	✓
Complete Packs (50mm & 75mm outlets)	✓	✓	✓
Complete Packs (160mm outlet)	✓	✓	✓
WETFLOOR GRATE & WASTE			
WetFloor Grate & Waste (40mm & 50mm outlets)	--	✓	✓
TRAPMATE			
TrapMate (40mm P-trap Kit)	--	✓	✓
WETFLOOR DRAIN			
First Fix Packs (50mm & 75mm outlets)	✓	✓	✓
Second Fix Packs (available in 15 colours)	✓	✓	✓
Complete Packs (50mm & 75mm outlets)	✓	✓	✓
LOLO DRAIN			
Lolo Drains Complete (50mm outlets)	✓	✓	✓
VITYL DRAINS			
VitylDrain 1st Fix (50mm & 75mm outlets)	--	✓	✓
VitylDrain 2nd Fix Flange & Grate	--	✓	✓
RAINDRAIN LITE CATCHPITS			
RainDrain Lite Polypropylene	--	✓	✓
RAINDRAIN CATCHPITS			
RainDrain Nylon	--	✓	✓
COST SAVING PRODUCTS			
Ceiling Saver	--	✓	✓
HiddenHatch Bath/Shower/Jacuzzi Inspection Hatch	--	✓	✓

PRODUCT DESCRIPTION	AGRÉMENT CERTIFIED	QUALITY CHECKED	SEAQUAL MANUFACT.
EEZYPLUMB			
Multi-functional interior / exterior plumbing hub	--	✓	✓
BUDDYBATS (Including Anchors)			
BuddyBats Polypropylene (15mm, 22mm, 28mm & 32mm)	--	✓	✓
BuddyBats Nylon (15mm, 22mm)	--	✓	✓
BUDDYCLIPS			
BuddyClip with Anchor Polypropylene (20mm & 25mm)	--	✓	✓
CHANNEL DRAIN QUALIDRAIN			
Stormwater Drain	--	✓	✓
CHANNEL DRAIN QUALIDRAIN LITE			
Stormwater Drain	--	✓	✓
CHANNEL DRAIN MUFFLE 4ALL			
4All Channel & Grate	--	✓	--
4All DrainBox Galvanised Steel / HDPE	--	✓	--
4All Garage Pack Galvanised Steel / HDPE	--	✓	--
4All Kit 2 x Stop Ends & 1 x Bottom Outlet	--	✓	--
4All Stop Ends	--	✓	--
4All Bottom Outlets (75mm & 110mm)	--	✓	--
SEAQUAL SPARE PARTS			
Main Rubber Seal & Retaining Ring	--	✓	✓
Main Rubber Seal Only	--	✓	--
WellTrap (75mm for WetFloor / 52mm for Lolo Drain)	✓	✓	✓
Replacement Grates (316 Screw-in)	--	✓	--
P-Trap Tapered Seal	--	✓	✓
P-Trap Compression Seal	--	✓	✓
Basin Reducer Seal	--	✓	--
Basin Connector Seal	--	✓	--



Full-Bore Balcony Drain

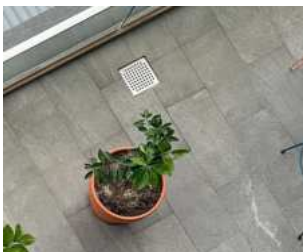
A two fix, full-bore system for balconies...

BalconyDrain 1st Fix Packs are identical to WetFloor Drain 1st Fix Packs with one additional option being the Low Profile 75mm Side Outlet 1st Fix Pack – 097779.

Be advised that a standard WetFloor 2nd Fix should not be specified with the Low Profile BalconyDrain 75mm outlet 1st Fix (097779). For shallow concrete slabs, 097708 or 097709 should be ordered.

FEATURES & BENEFITS

- Agrément S.A. Product Testing Complete – Certificate No: 2017/540 & 2017/541.
- Technically correct in every detail.
- Provided with large white waterproofing flange.
- Flange accepts all forms of waterproofing, including torch-on.
- Choice of four 1st Fix Packs.
- Two choices of grate sizes - 110 x 110mm & 200 x 200mm.
- BalconyDrain 2nd Fix Packs can also be used with the available HyDrain 1st Fix packs in areas which do not require a waterproofing flange.
- Black grates are made from 304 grade stainless steel for extra longevity.
- Perfect for use in coastal climates.
- Minimum flow of 95 litres/min.
- 5-Year warranty against manufacturer's defects.
- Technical data sheets, high-resolution images and drawings are available on request.



BalconyDrain | Complete

- 75mm Side Outlet
- 110 M-sert
- Stainless Steel Square Hole Grate

097708



BalconyDrain | Complete

- 75mm Side Outlet
- TileGrate & Pan

097709



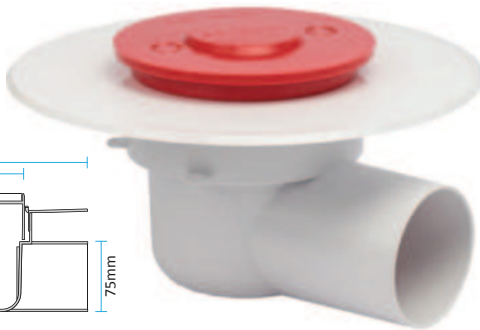
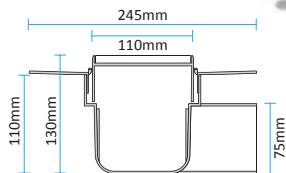
Basic Product Installation

- Provide BalconyDrain Complete.
- Fit 75mm S/O F-Box to position shown on balconies.
- Use Protective Dust Cover provided on F-Box.
- Fit Flange and provide waterproofing.
- Use 2nd Fix Protective Dust Cover provided on Flange.
- Fit M-sert & Grate and set Grate to height of finished floor (FFL).
- Provide tiling or other floor finish flush with Grate.
- NOTE: If TileGrate selected cut tiles to size and cement into TilePan provided.

BalconyDrain 1st Fix | F-Box & Flange

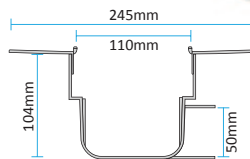
Flange & Low Profile F-Box with 75mm Side Outlet

097779



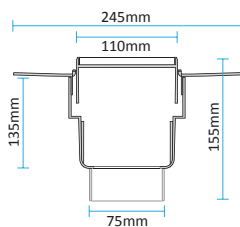
Flange & F-Box with 50mm Side Outlet

097710



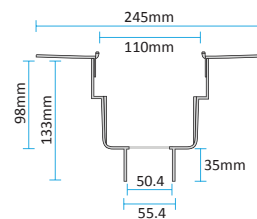
Flange & F-Box with 75mm Bottom Outlet

097746



Flange & F-Box with 50mm Bottom Outlet

097744



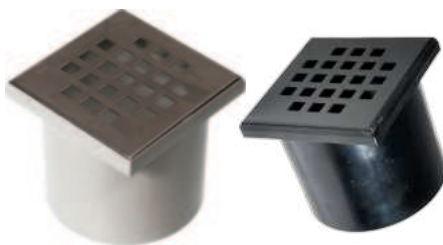
BalconyDrain 2nd Fix | Grate & M-sert

TileGrate M-sert & Pan
200mm x 200mm OD



097699

110mm x 110mm Grate



097700

• Stainless Steel

200mm x 200mm Grate



097701

• Stainless Steel

097698

• Matt Black

Basic Product Installation

- 1st Fix:**
- Provide BalconyDrains to position shown on balconies.
 - Fit 1st Fix Box (specify size) set in concrete to height of waterproofing.
 - Connect to (50mm or 75mm) drain pipe.
 - Use Protection Cover during construction.
 - Fit Flange and provide waterproofing.
- 2nd Fix:**
- Fit 2nd Fix M-sert and Grate and set Grate to height of finished floor (FFL).
 - Provide tiling or other floor finish flush with Grate.

Full-Bore HyDrain

The state-of-the-art exterior drain that won't block up!

HyDrain was designed to be a full-bore for flat roofs collecting rainwater and discharging it into the storm water system. It is widely used by plumbers as an alternative to the traditional cast iron full-bores which are known to be cumbersome, expensive, corrode and rust over time and are difficult to waterproof.

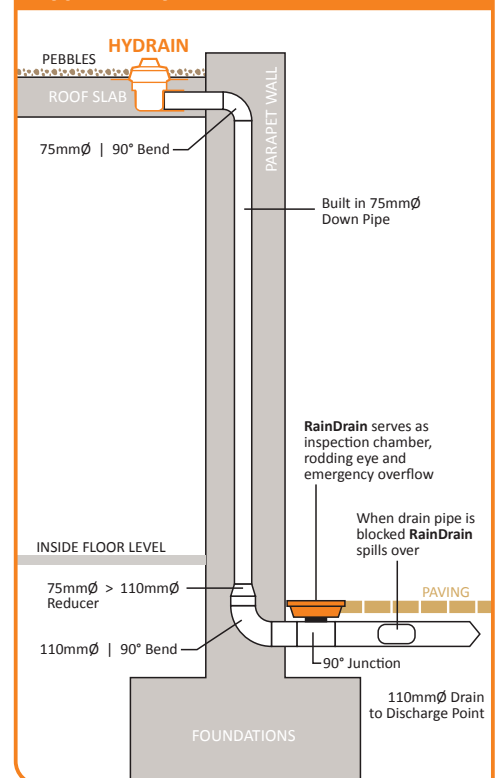
HyDrain on the other hand, is made from highly durable plastic making it light weight, easy to work with and install, cost effective and free from rust & corrosion. It has a wide waterproofing flange that is easy to adhere to. It is also available to purchase as a Complete Pack or as a 1st and 2nd fix option.

FEATURES & BENEFITS

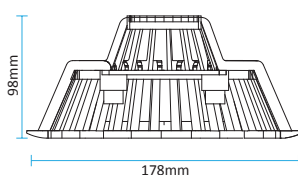
- Agrément S.A. Product Testing Complete – Certificate No: 2017/540.
- Height adjustable Waterproofing Flange
- Tough UV-resistant Glass-Filled Nylon Flange with polypropylene Dome.
- Light-weight yet durable.
- Accepts “torch-on” or cementitious waterproofing.
- Can be used as drain in roof gardens.
- 10-Year warranty against manufacturer's defects.
- Technical data sheets, high-resolution images and drawings are available on request.



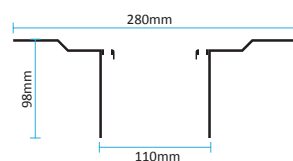
Typical HyDrain installation



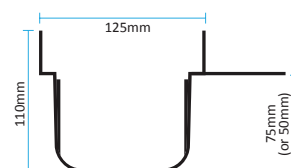
Dome



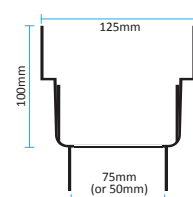
Flange



Side Outlet



Bottom Outlet



Basic Product Installation

- Provide HyDrain to positions where roof drains are shown.
- Set 75mm Bottom or Side Outlet F-Box to 75mm PVC pipe.
- Fit temporary Dust Cover during construction.
- Fit Flange and set flush with waterproofing level.
- Torch underside of bitumen waterproofing membrane and dress onto Flange.
- Bolt down Dome Grate onto waterproofing membrane with 4 bolts provided.



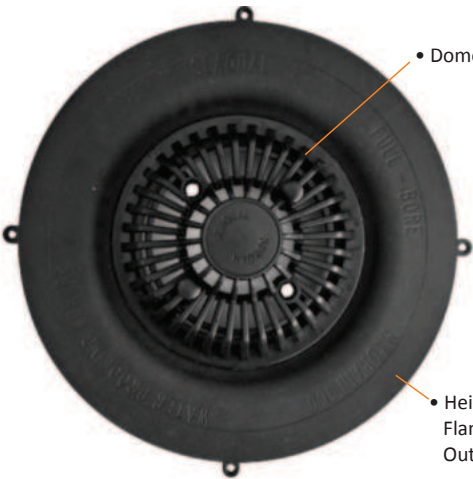
Set the perfect flange height for waterproofing!

HyDrain 2nd Fix | Grate & Flange



097704

• Dome & Flange with 110mm Bottom Outlet, which fits all F-Boxes below



• Domed Grate

• Height adjustable Flange with 110mm Outlet

HyDrain 1st Fix | F-Box

**Supplied with temporary Dust Covers for use during construction.*

HyDrain 50mm Side Outlet F-Box



097800

HyDrain 50mm Bottom Outlet F-Box



097801

HyDrain 75mm Side Outlet F-Box



097702

HyDrain 75mm Bottom Outlet F-Box



097703

HyDrain | Complete Sets

HyDrains are now available as complete units for your convenience.

HyDrain Complete unit with 75mm Side Outlet



097802

HyDrain Complete unit with 75mm Bottom Outlet



097803

HyDrain Complete unit with 50mm Side Outlet



097804

HyDrain Complete unit with 50mm Bottom Outlet



097805

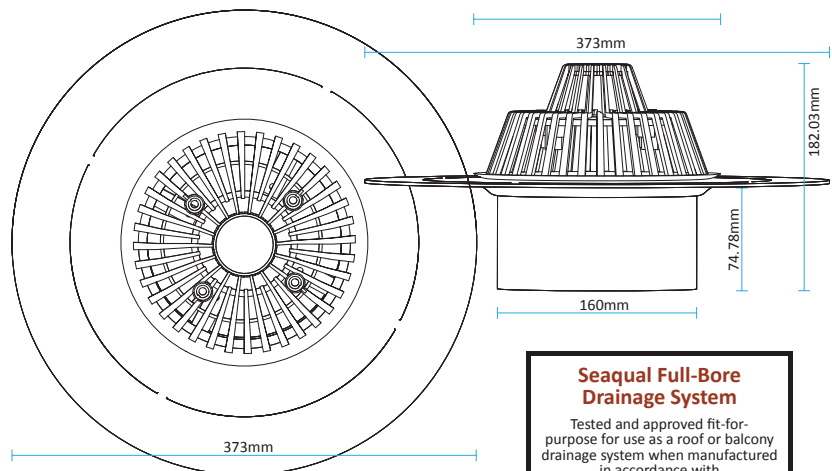
Full-bore HyDrain 160

The HyDrain for Commercial & Industrial applications...

Where 160mm storm water pipes have been specified, Seaqual offers the HyDrain 160 which allows for larger volumes of water and improved flow rates in large-scale buildings such as hospitals, schools, prisons, shopping malls, high-rise apartments and hotels. It's light in weight and easy to transport and install. The HyDrain 160 fits directly into a 160mm diameter rubber-ringed socket, bend or elbow-type fitting. When tested, HyDrain 160 experienced flow rates in excess of 1300 L/min, but we use an average flow rate calculated at 880 L/min.

FEATURES & BENEFITS

- Agrément SA Product Testing complete – Certificate No: 2017/540
- Height adjustable water-proofing flange with a 160mm diameter outlet.
- Connects directly to 160mm plumbing fittings available on the SA market.
- No 1st Fix required!
- Lightweight yet durable.
- Accepts torch-on waterproofing.
- High flow rate.
- 10 Year warranty against manufacturer's defects.
- Technical data sheets, high-resolution photos and drawings are available.



HyDrain 160

- Domed grate / waterproofing flange
- 160mm outlet

200030



Basic Product Installation

- Provide HyDrain 160 to positions where roof drains are shown.
- Set 160mm pipe with rubber ringed socket to desired height.
- Fit temporary Protection Cover during construction.
- Fit Flange into the 160mm socket and set flush with waterproofing level.
- Torch underside of bitumen waterproofing membrane and dress onto Flange.
- Bolt down Dome Grate onto waterproofing membrane with 4 bolts provided.

TrapMate

A durable P-trap with strip-resistant nuts and quality seals.

TrapMate is an ideal, cost-effective, 40mm waste P-trap, for use in specified areas like basins, sinks, wash troughs and prep bowls.

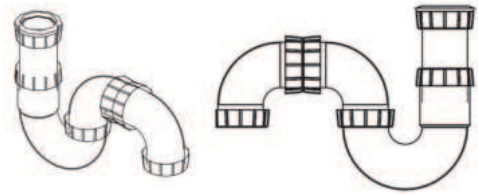
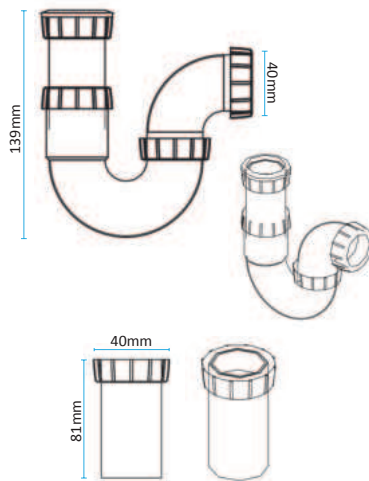
The TrapMate pack comprises of the following components:

An assembled P-trap complete with Nuts & Seals, 38mm sink connector, and a 32mm basin connector.

When connecting the P-trap to a floor outlet, our separate S-extension component can be used to provide additional connection options.

FEATURES & BENEFITS

- Robust, adjustable P-trap with a unique, slightly opaque finish makes for easy spotting of block-ages.
- High quality seals ensure a leak-proof installation.
- Quality strip-resistant nuts for secure tightening.
- Supplied with spare lubricant to lubricate seals.
- Manufactured from Green sustainable and recyclable materials. No PVC.
- Specialised seating of seals to prevent breakage and leaking.
- Technical data sheets, high-res images and drawings are available on request.



NEW! S-extension

- S-bend component for creating an S-trap

111215



NEW! TrapMate Kit

- 40mm P-trap
- 38mm Sink Connector
- 32mm Screw-in Reducer

111214



NEW! 50mm Reducer

- Allows our 40mm P-trap to be connected to a standard 50mm waste pipe

111221



Basic Product Installation

- Provide TrapMate 40mm Trap, 38mm Sink Connector and/or 32mm Screw-in Reducer.
- Connect to the basin/sink waste using only the parts needed based on waste outlet size.
- Join all P-trap parts together & check that they connect and align correctly.
- Gently tighten all nuts on TrapMate, securing them into position.



WetFloor Drain

Elegant, Agrément SA certified and technically correct

Our WetFloor Drain is supplied with a 75mm removable SABS-compliant Well Trap which acts as a water seal and is available in four different size and position outlets with a choice of multiple attractive grate finishes.

Applications include: Showers, kitchens, wet rooms, laundries, balconies – in fact anywhere with frequent water flow. The WetFloor Drain is sold in two parts: 1st and 2nd Fix Packs, giving the flexibility to choose the desired grate finish, as well as size and type of outlet. Additionally, any of the 1st and 2nd fixes can be mixed and matched, allowing multiple configurations for the final installation.

FEATURES & BENEFITS

- Agrément SA product testing completed – Certificate no: 2017/541.
- Elegant finish, yet technically correct.
- SANS 0252/2 compliant for use in all South African plumbing systems: one-pipe, two-pipe and single stack.
- 75mm water seal prevents evaporation from trap.
- 1st and 2nd Fix packs supplied separately.
- Stainless steel or multiple plastic grate colours available.
- WetFloor 304 complete product is now available (see page 11).
- High flow rate of up to 48L/min.
- Waterproofing flange which accepts cementitious or torch-on waterproofing.
- Removable grate for easy access to and maintenance of Well Trap.
- Suitable for showers, bathrooms and kitchen floors, etc.
- Height and square adjustable.
- Temporary dust covers provided for use during construction.
- Technical data sheets, high-resolution images and drawings in various formats are available on request.

PRODUCT DESCRIPTION

WetFloor Drain is primarily sold in two parts; namely, 1st Fix Pack and 2nd Fix Pack. An all-in-one system called WetFloor 304 is now available (see page 11).

2nd Fix Pack is fitted after installation of 1st Fix Pack and comprises:

- 110mm Outlet an adjustable M-Sert which is pushed into the F-Box before screeding/tiling;
- Well & Well Cap for Well Trap;
- Square Dust Cover for grate;
- Grate which is fitted just after tiling.

1st Fix Pack is installed at an early stage of construction and comprises:

- F-Box which is fitted to the waste pipe and usually set into the concrete;
- Waterproofing Flange which accepts cementitious or torch-on waterproofing;
- 2x Round Dust Covers for use during construction – one used during construction and the other during water-proofing.

2nd Fix Pack

Square disposable Dust Cover

110mm x 110mm Square Hole Grate

110mm x 110mm M-sert

Well Cap

Well & O-Ring



1st Fix Pack

Round disposable Dust Cover

Waterproofing Flange

Round disposable Dust Cover

50mm Side Outlet F-Box





1st Fix Packs – WetFloor & BalconyDrain ranges

1st Fix Packs have been simplified for use and are supplied with the F-Box, Flange and 2 x Dust Covers. One Dust Cover fits directly onto the F-Box for protection during slab pouring. The other fits onto the flange for protection during waterproofing.

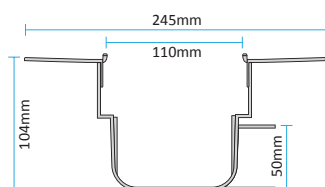
The following 1st Fix Packs are used for both BalconyDrain & WetFloor applications:

WetFloor 50mm Side Outlet



097710

- Used with Waterproofing Flange.
- Includes temporary Protection Covers for use during construction.

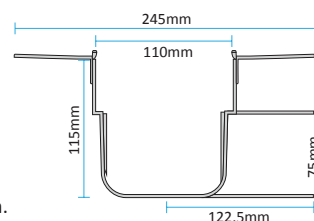


WetFloor 75mm Side Outlet | High Profile



097745

- Used with Waterproofing Flange.
- Includes temporary Protection Covers for use during construction.

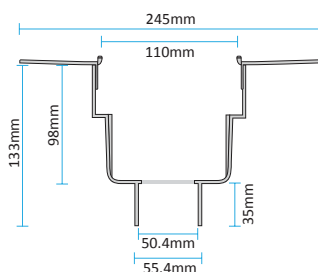


WetFloor 50mm F-Box Bottom Outlet



097744

- Used with Waterproofing Flange.
- Includes temporary Protection Covers for use during construction.

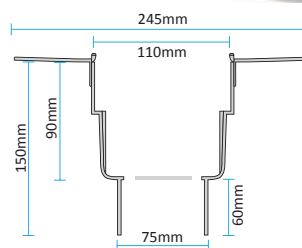


WetFloor 75mm F-Box Bottom Outlet



097746

- Used with Waterproofing Flange.
- Includes temporary Protection Covers for use during construction.

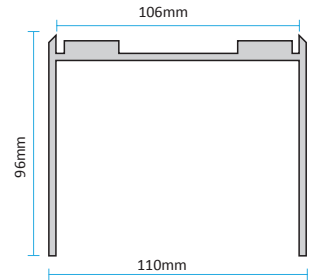


WetFloor Drain

2nd Fix Packs: supplied with a 75mm deep Well Trap.

FEATURES & BENEFITS:

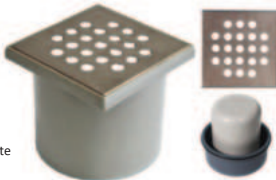
- Agrément SA product testing complete – Certificate No: 2017/541.
- Fits into 1st Fix F-Box & Waterproofing Flange.
- Height-adjustable to allow for screed.
- Can be squared up to suit tiling.
- All colours are supplied with matching M-sert & Grate.
- 5-Year warranty against manufacturer's defects.
- Grates manufactured from high quality 304/316 grade Stainless Steel for longevity and durability.



Stainless Steel Round Holes 2nd Fix Pack

097726

- 316 grade Stainless Steel Grate with round holes.
- 110mm Outlet.
- 75mm deep Well Trap.
- Discardable Square Dust Cover for protection during construction;
- High flow rate up to 42L/min.



Stainless Steel Square Holes 2nd Fix Pack

097727

- 316 grade Stainless Steel Grate with square holes.
- 110mm Outlet.
- 75mm deep Well Trap.
- Discardable Square Dust Cover for protection during construction;
- High flow rate of 42L/min.



NEW! Stainless Steel Powder Coated Bronze Grate 2nd Fix Pack

200200

- 316 grade Stainless Steel Bronze powder-coated grate with square holes.
- 110mm Outlet.
- 75mm deep Well Trap.
- Discardable Square Dust Cover for protection during construction;
- High flow rate up to 42L/min.



NEW! Stainless Steel Powder Coated Black Grate 2nd Fix Pack

097731

- 304 grade Stainless Steel Powder Coated Black Grate with square holes.
- 110mm Outlet.
- 75mm deep Well Trap.
- Discardable Square Dust Cover for protection during construction;
- High flow rate up to 42L/min.



TileGrate for a Hidden Finish 2nd Fix Pack

097729

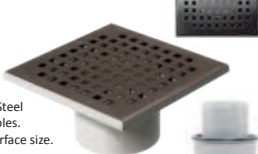
- Durable UV stabilised ABS Plastic.
- Tileable Pan provided.
- Endless creative finish possibilities.
- 110mm outlet.
- 75mm deep Well Trap.
- High flow rate of 42L/min.



Stainless Steel 200x200 Grate 2nd Fix Pack

097730

- 316 grade Stainless Steel Grate with square holes.
- 200mm x 200mm surface size.
- 110mm Outlet.
- 75mm deep Well Trap.
- High flow rate of 42L/min.
- Also available in the SS powder coated black grate (Code: 097732)



Basic Product Installation

- Provide WetFloor 1st Fix Pack.
- Provide WetFloor 2nd Fix Pack.
- Fit F-Box to shower waste pipe in concrete slab with Waterproofing Flange set flush with top of concrete.
- Waterproof shower cubicle and dress onto Flange.
- Fit 2nd Fix M-sert & Grate to finished floor height.
- Square up Grate and tile flush with top of Grate to FFL.
- Fit Well & Well Cap for water seal.
- Always use temporary red Dust Covers during construction.



Now available: WetFloor 304

FEATURES & BENEFITS

- SANS 0252/2 compliant for use in all South African plumbing systems: one-pipe, two-pipe and single stack.
- 75mm deep water seal slows evaporation from trap.
- Removable Well Trap parts allow for easy access and maintenance.
- Large white waterproofing flange which accepts all forms of waterproofing.
- Weep holes in flange allow seepage to drain directly into waste, allowing grout and cement to dry out.
- High flow rate up to 48L/min.
- Suitable for all internal wet floor areas such as kitchens, showers, bathrooms, laundries etc.
- Elegant 304 grade satin finished stainless steel grate is scratch-resistant and durable.
- All components 100% recyclable.
- Completely PVC-free.
- 5-Year warranty against manufacturer's defects.
- Technical data sheets, high-resolution photographs and drawings in various formats are available on request.

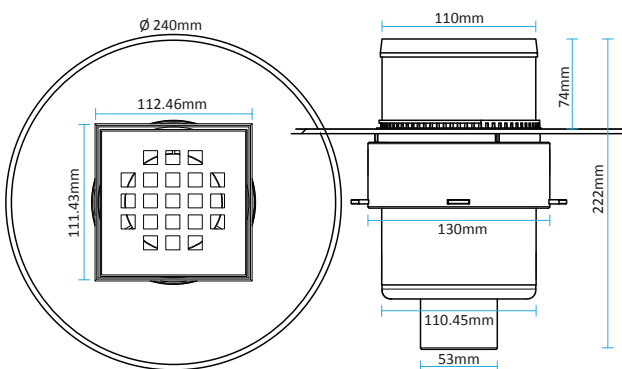
Agrément SA Certificate no: 2017/541

The WetFloor 304 All-in-One Drainage system is compact and easy to install. It includes an elegant 304 Stainless Steel Square Hole Grate and Seaqual's SANS 0252-2 compliant Well Trap.

WetFloor 304 with 50mm Bottom Outlet



111061

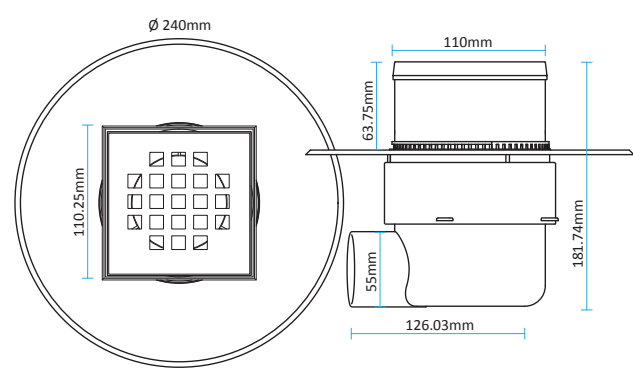


- All WetFloor Drains are supplied with temporary Protection Covers (pictured in red above) for use during construction.

WetFloor 304 with 50mm Side Outlet



111062



- All WetFloor Drains are supplied with temporary Protection Covers (pictured in red above) for use during construction.

SANS 0252/2: Minimum diameter of water seal depths of trap

Type of Trap	Type of sanitary fixture	Type of installation	Minimum depth of water seal
Non-integral	Bath, shower, sink (hospital, kitchen or laboratory type), laundry trough, clothes or dish washing machines, food-waste disposal unit (all of the domestic types), sanitary towel disposer.	One-pipe, two-pipe and single stack.	75mm



WetFloor Drain | Grates

We have the perfect grate for every type of shower installation...

110mm x 110mm



Stainless Steel
Round Hole
097726



Stainless Steel
Square Hole
097727



Bronze Powder-coated
Square Hole
200200



Black Powder-coated
Square Hole
097731

200mm x 200mm



Stainless Steel
Square Hole
097730



Black Powder-coated
Square Hole
097732

110mm x 110mm ABS



ABS
White
097711



WetFloor Drain Grates | Video



Scan the QR code to the left to view our installed shower grates.

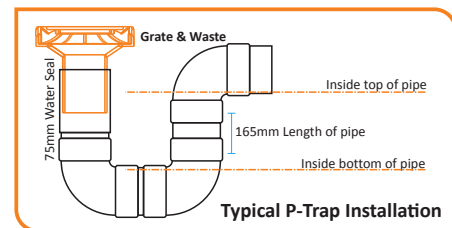
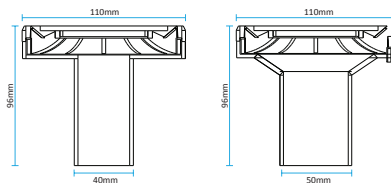
Grate & Waste

An elegant finish, at half the price...

Grate & Waste is a simple device designed to improve aesthetics at minimal cost. This product can be used as both an internal and an external drainage solution. When used internally it is coupled to a P-trap, most commonly found in showers. If used externally it can be coupled directly into either 40mm or 50mm plumbing pipe and is most commonly used in external showers or as a drainage point on balconies and patios. Some gas installation suppliers even use the 50mm Grate & Waste as air an vent in walls to allow movement of air in case of a gas leak. Grate & Wastes are available in three stylish grate finishes: stainless steel square hole design, stainless steel round hole design or a solid white ABS grate. Choose the waste size you require in the finish that matches your aesthetic appeal.

FEATURES & BENEFITS

- Suitable for external showers and balconies where no waterproofing membrane is required (ground floor units).
- Used with P-Trap for internal floor drains or with 90° bend on balconies.
- Technical data sheets, high-resolution photos and drawings are available.



Grate & Waste 2nd Fix

110mm x 110mm Grate with 40mm or 50mm Outlet.

ABS - White



111001
(40mm Outlet)

Stainless Steel - Round Holes



111100
(50mm Outlet)

111003
(40mm Outlet)

Stainless Steel - Square Holes



111060
(50mm Outlet)

111004
(40mm Outlet)

111102
(50mm Outlet)

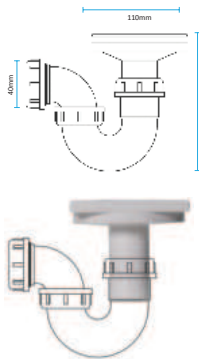


DrainMate

All-in-one 40mm P-trap & grate combination drain for indoor & outdoor drain applications such as enclosed balconies, kitchens, showers, atriums and cloakrooms where a waterproofing membrane is not required. Recommended for use on ground floor and basement applications.

UNIQUE FEATURES

- Strong, durable & cost-effective.
- Easy to install.
- 100% Recyclable.
- Height & square adjustable.
- Minimum flow rate of 40L/min



DrainMate

Preconfigured 40mm P-Trap and 110mm x 110mm Grate with 40mm outlet.

ABS - White



111213

Stainless Steel - Round Holes



111211

Stainless Steel - Square Holes



111210

Basic Product Installation

- Provide WetFloor Grate & Waste 110mm x 50mm outlet.
- Connect to deep seal P-Trap for floor drains.
- Connect to 50mm x 90° bend for balconies.
- Square up and set Grate to top of finished floor (FFL).
- Use temporary red Protection Cover during construction.



LoLo Drain

Designed for thin slabs and retro-fitting...

With cement technology improving, slabs are becoming thinner and stronger. To keep up with these trends, Seaqual has designed the LoLo Drain – a lower profile version of our tried and tested WetFloor Drain. Each component has been reduced in height to make it easier to install in thin slabs. The LoLo Drain consists of a shortened F-Box with 50mm side outlet and a reduced water seal. Instead of 75mm, the Well Trap is now 50mm. It is provided with our durable large white flange which accepts cement, bitumin and paint on waterproofing. M-serts housing the grates can also be reduced to desired height, while still maintaining their square adjustable feature.

FEATURES & BENEFITS

- Agrément SA certified for use on One-Pipe and Two-Pipe plumbing systems.
- Can be installed with ease in thin slabs.
- Maintains a high plumbing standard.
- Durable and strong.
- 100% Recyclable.
- Damaged components are easy and cost-effective to replace.
- Provided with dust covers for use during installation.
- Square shape provides a neat finish and is easy to tile around.
- 5-Year warranty against manufacturer's defects.
- High flow rate up to 48L/min.
- Tech data sheets, high-resolution images and drawings are available on request.



LoLo Drain | Complete Pack

TileGrate
insert

200mm x 200mm
M-Sert

Waterproofing
Flange

Well Cap

Well & O-Ring

50mm Side Outlet
F-Box



Basic Product Installation

- Provide LoLo Drain 50mm Side Outlet in finish of choice.
- Fit 50mm S/O F-Box to position shown on drawings.
- Use Dust Cover provided on F-Box.
- Fit Flange and provide waterproofing.
- Use 2nd Dust Cover provided on Flange.
- Fit Outlet and Grate and set Grate to height of finished floor (FFL).
- Fit 50mm deep Well Trap.
- Provide tiling or other floor finish flush with Grate.
- NOTE: If the TileGrate is selected, cut tiles to size and cement into TilePan provided.

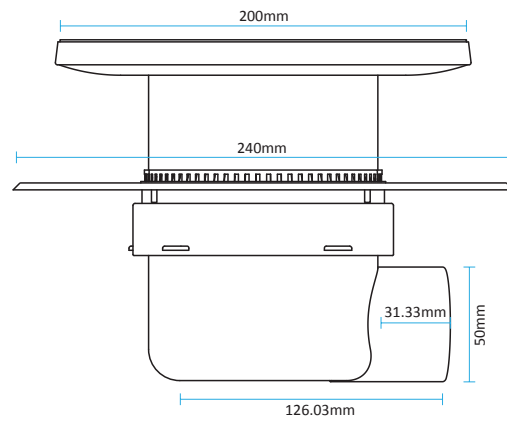
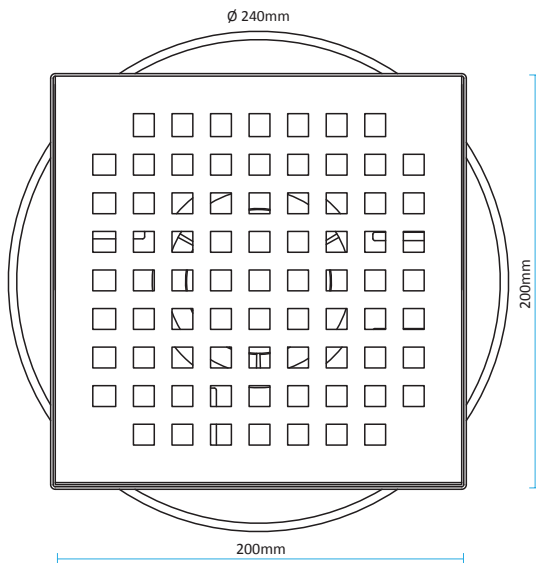
**Sequal F-Box WetFloor
Drainage System**

Tested and approved fit-for-purpose for use as a floor drainage system when manufactured in accordance with

CERTIFICATE 2017/541



Agrément SA Certificate no: 2017/541



**LoLo Drain | 110mm x 110mm Stainless Steel
Square Hole Grate**



111063

- Certified 'fit-for-use' on One-Pipe & Two-Pipe plumbing systems.
- Min 50mm Well Trap provided.

**LoLo Drain | 200mm x 200mm Stainless Steel
Square Hole Grate**



111065

- Certified 'fit-for-use' on One-Pipe & Two-Pipe plumbing systems.
- Min 50mm Well Trap provided.

**LoLo Drain | 110mm x 110mm Stainless Steel
Round Hole Grate**



111064

- Certified 'fit-for-use' on One-Pipe & Two-Pipe plumbing systems.
- Min 50mm Well Trap provided.

LoLo Drain | Tile Grate



111066

- Certified 'fit-for-use' on One-Pipe & Two-Pipe plumbing systems.
- Min 50mm Well Trap provided.

VitylDrain

Vital for vinyl floor applications

VitylDrain was designed specifically for vinyl floor installations in cloak rooms, public restrooms, kitchens, laundries and showers. With the ever-increasing costs of building and finishes, more Architects and their clients are turning towards affordable and sustainable finishes, one of which is vinyl flooring. Vinyl is robust, durable, non-slip and waterproof, making it an ideal floor material for dual-purpose and wet floor areas; for example, gymnasium cloakrooms. VitylDrain is manufactured with a large waterproofing flange to which the vinyl flooring can be directly adhered, rendering a seamless and perfectly waterproof finish. A stylish screw-down grate manufactured from ABS plastic is provided.

FEATURES & BENEFITS

- Six VitylDrain 1st Fix Packs to choose from.
- Two VitylDrain 2nd Fix Packs to choose from.
- Manufactured from ABS plastic for strength and durability.
- VitylRing secures vinyl in position to prevent leaking.
- Easy to install.
- Aesthetically appealing.
- 48L/min flow rate.
- 5-Year warranty against manufacturer's defects.
- Technical data sheets, high-resolution photographs and drawings in various formats are available on request.

VitylDrain 1st Fix Packs

VitylDrain 1st Fix Pack comprise: F-Box, Dust Cover and Well Trap either 51mm or 75mm deep.

**VitylDrain 50mm Side Outlet
Standard Profile
75mm WT**

097810



**VitylDrain 75mm Side Outlet
Standard Profile
75mm WT**

097813



**VitylDrain Low Profile 50mm Side Outlet
Low Profile
51mm WT**

097811



**VitylDrain 75mm Side Outlet
Low Profile
51mm WT**

097814



**VitylDrain 50mm
Bottom Outlet
75mm WT**

097812



**VitylDrain 75mm
Bottom Outlet
75mm WT**

097815





VitylDrain 2nd Fix Packs

VitylDrain 2nd Fix Packs may only be used with the 1st Fix Packs. The Well Trap is provided as part of the 1st Fix Pack. There are two choices of VitylDrain 2nd Fix Packs, which comprises:



- A Flange onto which the vinyl is adhered. Adhere to the mark provided on the Flange for correct application.
- A Ring which screws down into the Flange and secures the vinyl firmly into position, preventing leaks.
- A choice of Grates which fit flush with the floor.

VitylDrain Charcoal Black 2nd Fix



097820

VitylDrain Dove Grey 2nd Fix



097821

2nd Fix Pack

VitylGrate



Threaded VitylRing



110mm M-Sert



1st Fix Pack

Well Trap



Round disposable Dust Cover



50mm / 75 mm Side Outlet F-Box



Basic Product Installation

- Provide VitylDrain 1st Fix.
- Provide VitylDrain 2nd Fix.
- Fit F-Box to position shown on drawings.
- Use Protective Dust Cover provided on F-Box.
- Fit VitylFlange securely into pre-installed F-Box.
- Provide vinyl flooring and adhere correctly onto VitylFlange.
- Fit Well & Well Cap for odour seal.
- Screw down the VitylRing.
- Insert the VitylGrate.

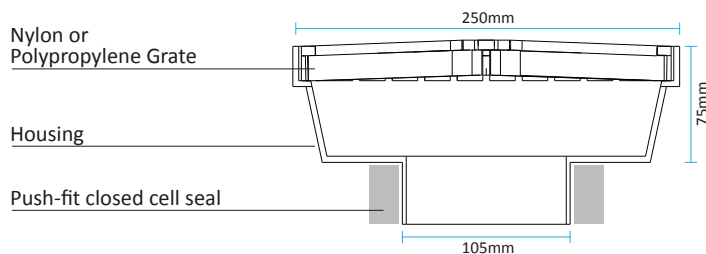
RainDrain | Nylon

The catchpit that blends into the surrounding paving, made from nylon that's tough enough to drive over!

The RainDrain Nylon is Seaqual's flagship product. Applications include domestic and light commercial use such as driveways and car park areas. RainDrain Nylon can carry vehicular weight of up to 5 tons. RainDrain comes in 5 different colours to blend into its environment. It is available in Clay Brown, Charcoal Black, Cement Grey, Sandstone and Shrub Green.

FEATURES & BENEFITS

- Eliminates the need for brick or cement/concrete sumps.
- Tough Glass-filled Nylon for domestic driveways.
- Simply pushes into a standard 110mm drain pipe.
- Colours to blend into surrounding areas.
- Can withstand a 5-ton vehicle.
- A proudly South African patented product with a 5-Year warranty.
- The architects' choice.
- Tech data sheets, high-resolution images and drawings available on request.



RainDrain Nylon | Recommended Applications

Use in commercial car park areas, in front of garages, in driveways on golf course pathways basement parking areas and rooftop parking areas.



RainDrain | Nylon

250mm x 250mm Grate & Housing with outlet to fit 110mm drain pipe.

033100

- Clay Brown



033101

- Cement Grey



033102

- Black



033103

- Shrub Green



033104

- Sandstone



Basic Product Installation

- Provide Nylon RainDrain's 250mm square Rain Water Catch Pits to positions shown, under down-pipes in courtyards.
- Specify colour.
- Set in flush with paving, connect to underground 110mm PVC drain pipe.
- Dish surrounding paving towards RainDrain.

RainDrain / Lite



RainDrain Lite is suitable for pedestrian traffic. Made from durable polypropylene, RainDrain Lite saves up to 30% of cost...

RainDrain Lite is designed to remove surface water from paved areas. Use RainDrain Lite under gutter downpipes, in atriums and courtyards or under garden taps. RainDrain Lite is manufactured from UV-stabilised polypropylene for strength, durability and protection against the elements. RainDrain Lite is designed for use in pedestrian areas only. There are 5 colours available: Black, Grey, Sandstone, Terracotta and Green.

FEATURES & BENEFITS

- Impact resistant polypropylene.
- UV-stabilised.
- Ideal for use under down-pipes, atriums, courtyards, etc.
- Up to 30% less costly than RainDrain Nylon.
- Not recommended for areas with vehicular traffic.
- Colours to blend into surroundings.
- All-South African patented product.
- 2-Year warranty against manufacturer's defects.
- Tech data sheets, high-resolution photos and drawings are available on request.



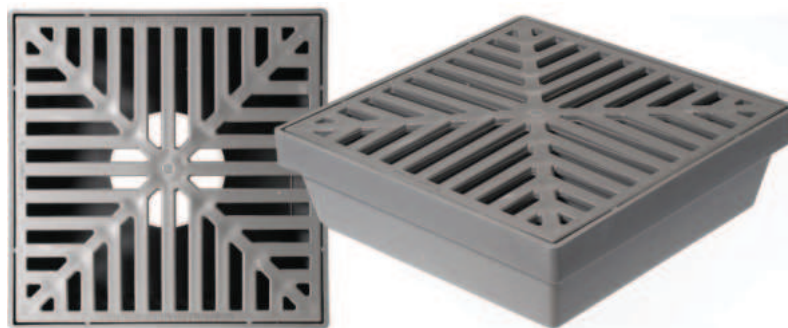
RainDrain Lite

Recommended Applications

Use in all non-vehicular areas requiring surface drainage; pedestrian pathways, atriums, courtyards, shopping arcades under gutter down-pipes, gardens and under garden taps (can be used in conjunction with under-ground rain water/grey water harvesting systems).

RainDrain Lite

250mm x 250mm Grate & Housing with outlet to fit 110mm drain pipe.



097755

• Grey



097754

• Black



097756

• Sandstone



097757

• Terracotta



097758

• Green

HiddenHatch



Access to services without compromising on style...

HiddenHatch provides concealed access to plumbing or electrical pipework behind a tiled or wooden finish. Repair work on pipes can be done with minimal damage or mess and with quick reinstatement of the tiled/wooden area. See installation instructions:

TECHNICAL DETAILS

- Manufactured from ABS Plastic.
- 100% Recyclable.
- Frame outer dimension: 345mm x 345mm.
- Cover Plate outer dimension: 300mm x 300mm.
- Gap for string: 3mm.
- 5-Year warranty against manufacturer's defects.
- Tech data sheets, high-res images and drawings available on request.

HiddenHatch

097707



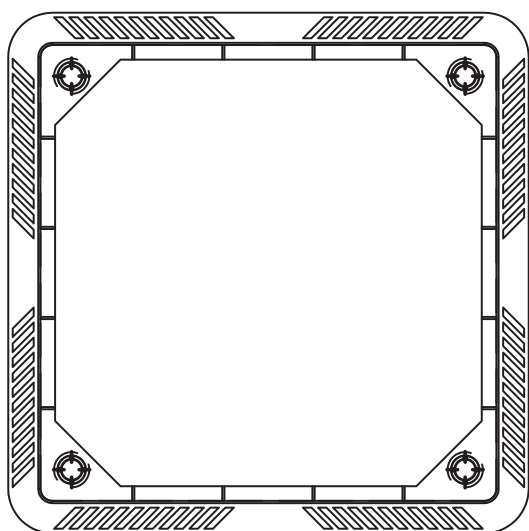
This product uses a click-in system to secure the cover plate to the frame.

Installation Instructions

1. Before tiling, fix frame of HiddenHatch to brickwork with nails or screws.
2. Tile around bath. Place cover plate into frame and fix tiles to the cover plate using tile cement or silicone.
3. Before grouting, place string into grout line.
4. Once string is in place, smooth over with grout.

Removal Instructions

1. Locate the string by scratching through grout.
2. Pull string to loosen and remove grouting.
3. Remove tiled cover plate.
4. Once inspection is complete, repeat installation steps 3 and 4 above.



The HiddenHatch

1. Tiles can be placed on HiddenHatch with cement or silicone.
2. Before tiling, fix frame of HiddenHatch to brickwork with nails or screws.
3. Tile around bath. Place cover into frame and fix tile to cover using tile cement or silicone.
4. Before grouting, place string in grout line.
5. To remove HiddenHatch, locate the
6. string, pull upwards and remove the grouting.
7. Repeat from Step 3 above to replace.

Ceiling Saver



Directs water flow away from the interior of your home...

Ceiling Savers are unique devices that are installed over the vacuum breakers of a traditional electric geyser. Vacuum breakers are known to fail and they are not equipped to carry excess water outside of the home. In the event of a failure, the Ceiling Saver directs the flow of water through the overflow pipe, discharging it outside the home and therefore prevents interior flood damage. For the best results, install Ceiling Saver over a geyser's inflow and outflow water pipes.

FEATURES & BENEFITS

- Prevents major flood damage when vacuum breakers fail.
- Durable and strong.
- Inexpensive.
- Long-term cost-saving product.
- 2-Year warranty against manufacturer's defects.
- Tech data sheets, high-resolution images and drawings available on request.



PVC
Free

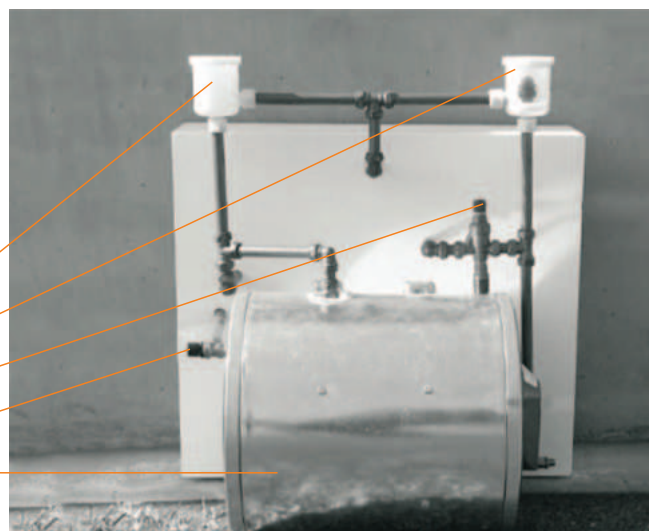
Ceiling Saver

Vacuum Breaker

Pressure Reducing Valve

Safety Valve

Hot Water Cylinder



Ceiling Saver



097780

Basic Product Installation

- Supply each geyser with 2x Ceiling Savers.
- Install over the vacuum breaker on both inlet and outlet water pipes.
- Secure plumbing pipe as specified (22mm) to the outlet of the Ceiling Saver.
- Run discharge pipe to exterior of building.



EezyPlumb



A Plumber's Best Friend

A hidden yet easily accessible multifunctional plumbing hub that provides an aesthetically pleasing solution to unsightly waste traps. EezyPlumb is the only patented dish/washing machine plumbing hub, incorporating a hidden innovative superior water trap, manufactured in South Africa.

EezyPlumb is used to connect baths, showers, handwash basins, kitchen sinks, washing and dishwashing machines to the incoming hot and cold water supply and to collect and dispose waste water into the sewerage system.

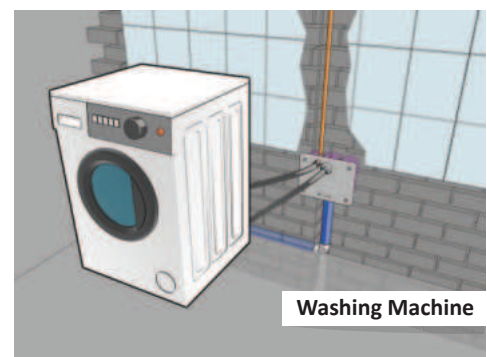
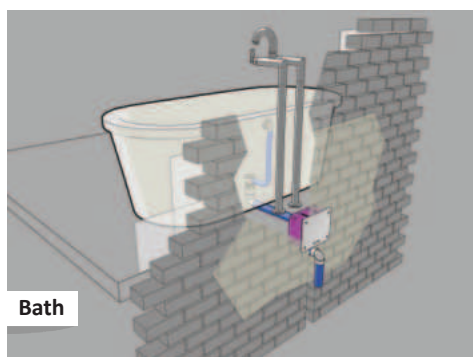
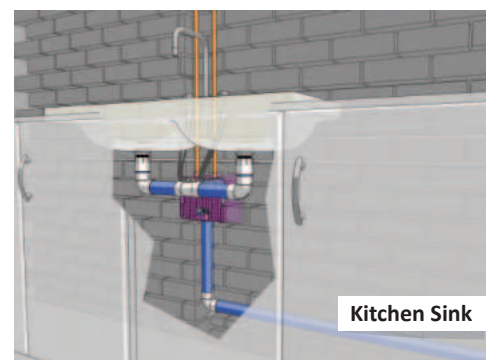
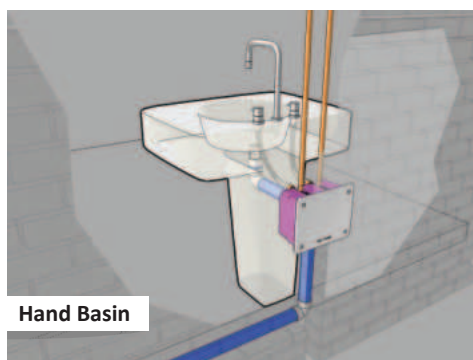
This is truly a world first, proudly South African product, patented in France, Germany, England, Australia, the USA and South Africa and manufactured in Knysna with Patent number ZA2010/06677.

Technical data sheets, high-resolution photographs and drawings in various formats are available on request.

FEATURES & BENEFITS

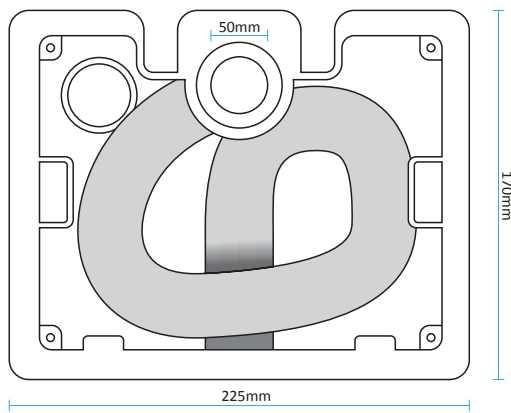
- Built into the wall → the inlet pipe sits flush with the wall saving valuable space and allowing a standardised connection for the plumber.
- Easy to install → less labour → cost-effective.
- Standardised installation procedure → aesthetically pleasing.
- SANS compliant water seal → prevents the passage of sewerage gas.
- Can be built into interior walls → huge space saver in cupboards below sinks and wash basins.
- Can be built into external walls → maintenance from outside of building → better security & privacy.
- Easy maintenance procedure → can be done by the home owner.
- Tubular design means solids are unlikely to deposit in the pipe → continuous wastewater flow.
- Superior water seal → no odours due to evaporation.
- Slots for locating a hot and cold water inlet neat finish → improved aesthetics.
- Waste water flow rate of 69 litres/min → exceeds SANS min requirement of 64 litres/min.

EezyPlumb: Typical Installations

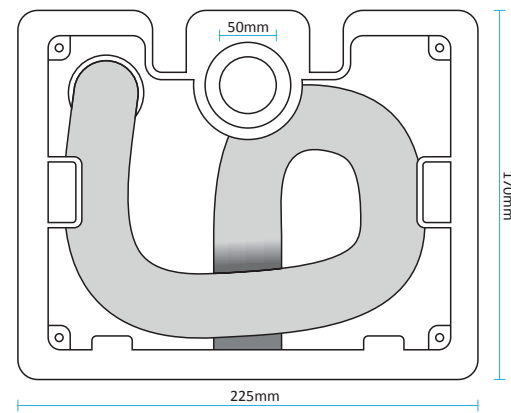




Eezyplumb | Indoor Installation



Eezyplumb | Outdoor Installation



Eezyplumb

111222



111223



Basic Product Installation

- EezyPlumb inlet and outlet dimensions are designed to accommodate a standard 50mm PVC pipe.
- The waste trap is formed from a 38mm Ø, 700mm long ribbed polypropylene tube.
- When connecting to a washing or dish washing machine outlet, a reducer attachment is provided to reduce the EezyPlumb inlet from 50mm to 25mm to which a standard wastepipe from the machine can be secured using a clamp.
- The EezyPlumb Plumbing Hub is manufactured from ABS and includes position indicator and installation markings moulded into the main body to ensure correct installation into either inner or outer walls.

EezyPlumb components and accessories are warranted against manufacturer's defects for a period of 5 years from date of purchase. Retain invoice along with the FG-codes provided on the products as proof of purchase.

BuddyBat



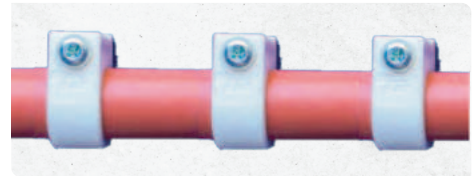
The Pipe Bat that's secure, fast and dampens noise...

BuddyBats are manufactured from UV-stabilised polypropylene and can be painted to blend into their environments. They are supplied with nail-in-anchors: 15mm diameter BuddyBats are supplied with 6mm x 55mm long anchors and the 22mm diameter BuddyBats are supplied with 6mm x 70mm anchors.

BuddyBats are simple to install and are available in 4 sizes.

FEATURES & BENEFITS

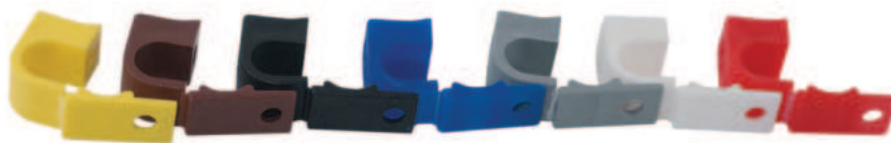
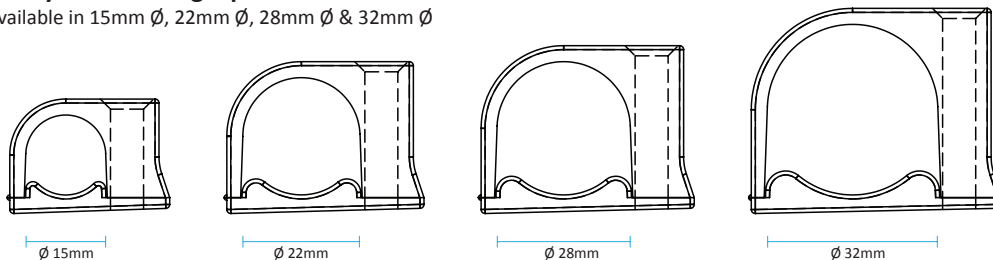
- Ideal for securing pipework in lofts and around the geyser
- Helps dampen noise caused by vibration and water hammer.
- Red and blue polypropylene to identify hot and cold water pipes.
- Brown and white polypropylene bats help pipes blend into the surroundings and are suitable for indoor or outdoor use.
- All BuddyBats are supplied with 6mm masonry anchors and can also be secured with any nail or screw.
- 2-Year warranty against manufacturer's defects.
- Technical data sheets, high-resolution photographs and drawings in various formats are available on request.



BuddyBat

BuddyBat Plumbing Pipe Bracket

Available in 15mm Ø, 22mm Ø, 28mm Ø & 32mm Ø



Available White, Brown, Blue (to indicate cold water) and Red (to indicate hot water).
Other colours on request and subject to minimum order quantity.



BuddyBats are supplied in packets of 10, 100 or 1000. We can manufacture in other colours to minimum quantities being ordered.

15mm Ø BuddyBats	10pcs	100pcs	1,000pcs
15mm Blue with anchor	033149	033155	033165
15mm Red with anchor	033145	033157	033167
15mm Brown with anchor	033108	033151	033161
15mm White with anchor	033120	033159	033169

28mm Ø BuddyBats	10pcs	100pcs
28mm Blue with anchor	033134	033179
28mm Red with anchor	033136	033181
28mm Brown with anchor	033138	033183
28mm White with anchor	033130	033175

22mm Ø BuddyBats	10pcs	100pcs	1,000pcs
22mm Blue with anchor	033150	033156	033166
22mm Red with anchor	033146	033158	033168
22mm Brown with anchor	033109	033152	033162
22mm White with anchor	033121	033160	033170

32mm Ø BuddyBats	10pcs	100pcs
32mm Blue with anchor	033135	033180
32mm Red with anchor	033137	033182
32mm Brown with anchor	033139	033184
32mm White with anchor	033131	033176



Secures electrical conduits...

BuddyClips are used to secure electrical pipework to all surface types: brick, masonry and wood and can be painted to blend with surroundings. BuddyClips are easy to install. Made from Polypropylene, they are strong and durable. BuddyClips help to prevent theft of electrical conduits and cables. Sold in packets of 10 units with 6mm x 70mm nail-in anchors. BuddyClips are available in two sizes: 20mm diameter and 25mm diameter, to fit common electrical conduits.

FEATURES & BENEFITS

- Strong and durable.
- Secures electrical conduit in position.
- Easy to install.
- Blends into its environment.
- Can be painted.
- Supplied with 70mm nail-in-anchors.
- Can be used with screws or nails.
- 2-Year warranty against manufacturer's defects.
- Tech data sheets, high-resolution photographs and drawings in various formats are available.

BuddyClips		10pcs
	20mm BuddyClip white with anchor	033105
	25mm BuddyClip white with anchor	033106

BuddyClip

BuddyClip Electrical Conduit Bracket

Available in 20mm Ø and 25mm Ø



Basic Product Installation

For Internal Pipe-work:

- Complete all pipe-work to geyser or electrical conduits.
- Using 75mm nails or wood screws, fix BuddyBat / Clip to pipe-work on timber rafters.
- Ensure no two pipes are in contact with each other.

For External Pipe-work:

- Place BuddyBat onto completed pipe-work.
- Drill 6mm hole into masonry using the BuddyBat as a drill guide.
- Fit anchor and drive nail home.

Do Seaqual products carry a Warranty?



YES! Our products carry a warranty against manufacturer's defects.

Warranties that vary from 12 months to 10 years.

If you are unsure of the warranty period please contact us on info@seaqual.co.za or call +27 (0)44 382 3484.

*Our warranty does not cover incorrect installation or application.

QualiDrain

QualiDrain

Known for its versatility and reliability, this 'Storm Water Drain' will always ensure a top 'Quality Finish'

QualiDrain has established itself as a versatile, reliable and high quality surface drainage system enabling the user to design a cost-effective way of removing storm water in any situation. It can also be configured as a catch-pit to handle large volumes of storm water.

Components consist of Stop-Ends, a 75/110 Ø Adapter/Reducer, 50mm Side Outlet, 75mm Side Outlet, U-Clip, channel and grate and are available separately so you purchase only what you need.

Channels are made from polypropylene and come fitted with either a heavy duty grate made from glass-filled nylon or light duty grate in polypropylene. Both grate options are available in one of five colours to match the surrounding environment.

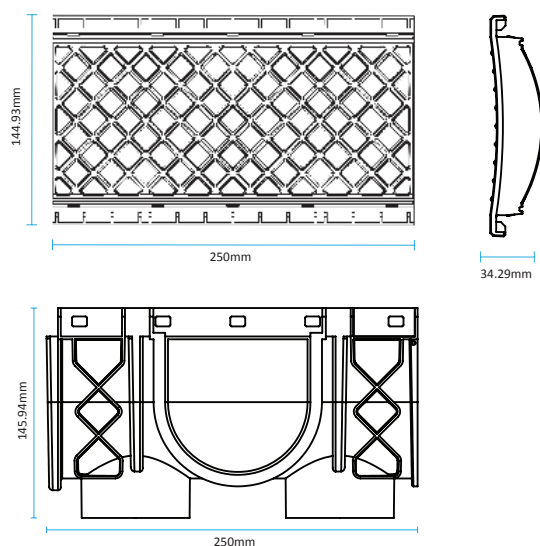
QualiDrain is a patented, proudly South African product that is manufactured in Knysna and a first of its kind in the global plumbing and construction industries.

FEATURES & BENEFITS

- Protects garages, driveways, roads, pathways, atriums, swimming pools and patios from flooding by effectively collecting excess rainwater and channelling it to the storm-water system.
- When installed in parallel, it can serve as a catch-pit to any required size.
- This product is light in weight making it easy to transport and install.
- Its 250mm polypropylene body is water-repellent giving it a high flow rate with minimum required fall and can be shortened even further if required.
- Grates are tough and durable and their diamond mesh design makes for an aesthetically pleasing finish when connecting at right angles.
- Choice of 1.5T or 12.5T weight bearing capacities.
- Its click-together system is easy to assemble.
- Creating a T, L or + requires NO junction box or T-piece.
- Its ribbed structure ensures solid anchoring within concrete and provides rigidity and stability.
- Supplied with a protective dust cover for use during installation which is then replaced with a pristine grate once the concrete has cured. No slurry damage or cleaning of grates required.
- Suitable for any outdoor ground floor area that requires a linear drain connected to a storm water or rain water harvesting system.
- Technical data sheets, high-resolution photographs and drawings in various formats are available on request.

QualiDrain | Specifications

(Please enquire for full detail technical drawings)



QualiDrain | Kits





QualiDrain Nylon

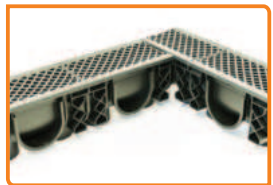
QualiDrain Nylon is complete with a heavy-duty grate and is designed for areas that carry vehicular traffic.

UNIQUE FEATURES

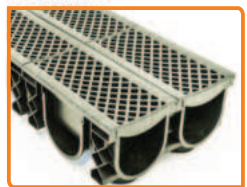
- The polypropylene channel is fitted with a glass-filled nylon grate which is tough and durable.
- The grate has a load bearing capacity of 12.5T, giving it a rating of B125.
- The grate has an aesthetically pleasing diamond pattern that remains uniform no matter the layout design (as seen to the right).
- Available in black, grey, green, sandstone and terracotta
- Grates are available in black, grey, green, sandstone and terracotta.



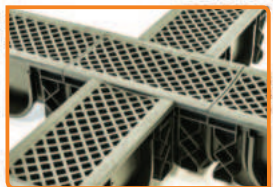
• T-Connection



• L-Connection



• Parallel Catch-pit



• Cross - Connection

QualiDrain Nylon | Body & Grate



200070

- Black



200079

- Grey



200081

- Sandstone



200082

- Clay Brown



200083

- Green

QualiDrain Lite | NEW!

QualiDrain Lite is a lower-cost version of QualiDrain for use in areas with pedestrian traffic.

UNIQUE FEATURES

- The same polypropylene channel fitted with a durable polypropylene grate.
- The grate has a load bearing capacity of 1.5T, giving it a rating of A15.
- Grates are available in black, grey, green, sandstone and terracotta.
- Also available pre-packaged in 1-meter lengths and 3-meter Garage Packs.

QualiDrain Lite Body & Grate

Black	Grey	Sandstone	Terracotta	Green
 200185	 200186	 200187	 200188	 200189



• Simple "click-in" system

Basic Product Installation

- Provide QualiDrain Channels and Grates of choice.
- Provide Kits as required.
- Connect Bottom / Side Outlet to Channel as indicated on manufacturer's installation instructions.

The QualiDrain Drainage System components & accessories are warranted against manufacturer defects for a period of 5 years from date of purchase. Please retain your invoice along with the FG-codes provided on the products as proof of purchase.

4All by

MUFLE®

PASSION FOR DRAINAGE

A simple, yet tough, channel drainage system...

Manufactured from HD-PE and supplied with either Galvanised steel or Black HD-PE grates, 4All can be considered a DIY product as it's easy to install. 4All Garage Pack can carry the weight of a light domestic vehicle and carries a rating of A15 (can handle up to 1.5T of vehicular weight).

4All Garage Packs come as complete kits, comprising: 3 x 1m Black HD-PE Channels, 3 x 1m Grates (either HD-PE or Galvanised steel), 2 x Stop Ends and 1 x Bottom Outlet. The Bottom Outlet can be used with either 110mm or 75mm stormwater pipe with the use of a socket. Should you require accessories, such as T-pieces or 90° corners, please see 4All Accessories opposite.

FEATURES & BENEFITS

- Grating clicks in and out - no screws required.
- Designed in accordance with EN 1433.
- Easy to assemble.
- The smooth waterproof surface allows for quick, low resistance water drainage.
- The external structure with ribs improves the anchoring between concrete and HDPE and is designed for better strength and channel rigidity.
- High mechanical and chemical resistance.
- Lightweight.
- Easy to carry.
- Recommended for light duty and domestic use only.
- Supports up to 1.5-ton vehicle.
- Technical data sheets, high-resolution photographs and drawings in various formats are available on request.
- 12 Month manufacturer's warranty.



Mufle 4All Garage Packs



033099

**4All Garage Pack
Galvanised Steel**

033093

**4All Garage Pack
HD-PE**





4All Channels & Grates

Seaqual offers loose 4All Channels & Grates – perfect for selection in areas where a 3m Garage Pack would not be sufficient, such as patios, stoeps and along garden and pedestrian pathways longer than three running meters. The loose Channels & Grates also carry A15 certification.

4All Channels & Grates



033098

4All Channel & Galvanised Steel Grate (1m)

033090

4All Channel & HD-PE Grate (1m)



4All Accessories

4All DrainBoxes are unique devices that can be used to create 90° corners, T-pieces and crosses. The DrainBoxes may not be used as drainage points. 4All Stop Ends and Bottom Outlets are available in various kits. See selection below.

4All Accessories

033091

4All DrainBox Galvanised Steel Grate



033092

4All DrainBox HP-PE Grate



033094

4All Kit 1
• 2 x Stop Ends
• 1 x Bottom Outlet



033096

4All Kit 2
• 2 x Stop Ends



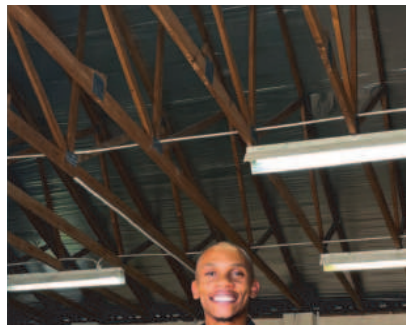
033097

4All Kit 3
• 1 x Bottom Outlet (75mm / 110mm adaptable)



Architects' Specifications

- Provide 4All Channels and Grates of choice.
- Provide Accessories as required.
- Connect Bottom Outlet to Channel as indicated on manufacturer's installation instructions.
- Connect Bottom Outlet to pipe-work in trench.
- Backfill with concrete slurry as per manufacturer's installation instructions.



ABOUT SEAQUAL

Seaqual (Pty) Ltd is a private company registered in South Africa. We manufacture a range of drainage solutions and pipe anchors synonymous with quality, durability and innovation.

All of our products are manufactured from recyclable materials in our ISO9001:2015 compliant production facility in Knysna, which is situated in the heart of South Africa's famous Garden Route.

Our products are installed throughout Africa and the Indian Ocean Islands.

Along with product patents, we designed and own the moulds and injection-moulding machines used to manufacture the plastic components needed to create our products.

We outsource production of the stainless steel components and assemble and package these components, together with those made in our own factory, to form the recognised brands in the Seaqual range.

In addition, we are a distributor for Mufle® (Italy) channel drains.

HISTORY

In 1993, a South African plumber with 37 years of experience in the industry established Seaqual in Knysna to produce solar panels. The name derives from 'Sea Quality', because the products are designed to withstand harsh coastal weather conditions.

In 2006, he teamed up with a businessman and changed the focus to specialised plumbing solutions. This resulted in the patenting of our flagship product, the RainDrain. Our R&D team has decades of experience in the building industry and have overcome numerous problem areas experienced by professional plumbers and builders when installing drainage solutions, namely:

- Products are difficult to install
- They take too long to install
- Breakages, loss and theft are on the increase
- Poor quality and unreliability results in too many come backs

With this in mind, Seaqual's R&D team has given careful thought to incorporating practical ways to solve these problems – offering the plumber / builder considerable savings in both time and money.



INNOVATIVE DESIGN

Our flagship product the RainDrain – was patented in 2005 and quickly became an industry standard as it avoided the need for the plumber to build a gully from brick and mortar.

The wide flange on our WetFloor Drain 1st fix allows for effective water proofing around the outlet pipe and so it soon became the plumber's preferred choice.

Our 75mm SANS-compliant water seal combats siphonage, stops odors entering a home by preventing complete evaporation of the water seal and can be removed for cleaning.

BuddyBats have a clip-on mechanism to reduce pipe shudder and copper theft. Installation time of a single anchor is significantly reduced and the installation breakage rating is zero. BuddyBats are colour-coded to identify hot and cold water pipes, amongst others.

Our HyDrain is light-weight, much easier to install and a lot less expensive than the cast iron full bore.

Costs due to stock loss, theft and breakage are largely eliminated with our 1st and 2nd Fix options. Contractor's can improve cash flow by buying the 1st fix during the wet works stage of construction and then buying the 2nd Fix during the finishing process of construction.

A PREMIUM BRAND YOU CAN TRUST

As a result of manufacturing 'best practise' and continued growth, our product range has filled important niches in the marketplace. Seaqual has become known as the premier supplier of reliable and affordable drainage solutions that are aesthetically pleasing and are designed, manufactured, supported and sold in Southern Africa and neighbouring countries.

Seaqual products have been rigorously tested enabling us to offer our range to the market proudly and with confidence. To compliment this, our high level of service has seen us become the manufacturer of choice for plumbing and building industries, both locally and abroad.

ENVIRONMENTAL

Our products are made from ABS, polypropylene, glass-filled nylon, natural rubber and 304/316 marine grade stainless steel.

These materials have been chosen because of their quality, strength, safety & durability. Our products are also 100% recyclable. We do not use PVC to manufacture any of our products because of its toxic effects. Our 'Neutral' rating means that we keep our negative impact on the environment to a minimum at all levels of operation.



Head Office (Knysna): **+27 (44) 382-3484**

Regional Sales Representatives:

Southern Cape:	sc@seaqual.co.za
Eastern Cape:	ec@seaqual.co.za
Western Cape & Namibia:	ct@seaqual.co.za
Northern Cape:	nc@seaqual.co.za
KwaZulu-Natal:	kzn@seaqual.co.za
Sales Manager - Northern Territories	ntsales@seaqual.co.za
Gauteng & Mpumalanga:	gp@seaqual.co.za
Gauteng, Free State & North West:	wr@seaqual.co.za
Gauteng & Pretoria:	pta@seaqual.co.za

For more information about our products please call 044 382 3484 or visit **www.seaqual.co.za**

Revit and AutoCAD technical drawings can be requested from our Technical department. Seaqual products are available from plumbing and building merchants country-wide. Please order by Product Code.

General Enquiries: **info@seaqual.co.za**
admin@seaqual.co.za / orders@seaqual.co.za

Website: **www.seaqual.co.za**

Postal: PO Box 2643, Knysna, 6570, South Africa
Physical: 5 Fechter Street, Knysna Industria, Knysna, South Africa