

The Tarkett maintenance guide for resilient floorcoverings

1. Preventive care



About **80%** of all the dirt on the floor that has to be cleaned off is brought in from outside. And **90%** of that can be avoided by effective and correctly dimensioned entrance matting.

The less dirt that comes in through the entrance, the lower the maintenance requirements.

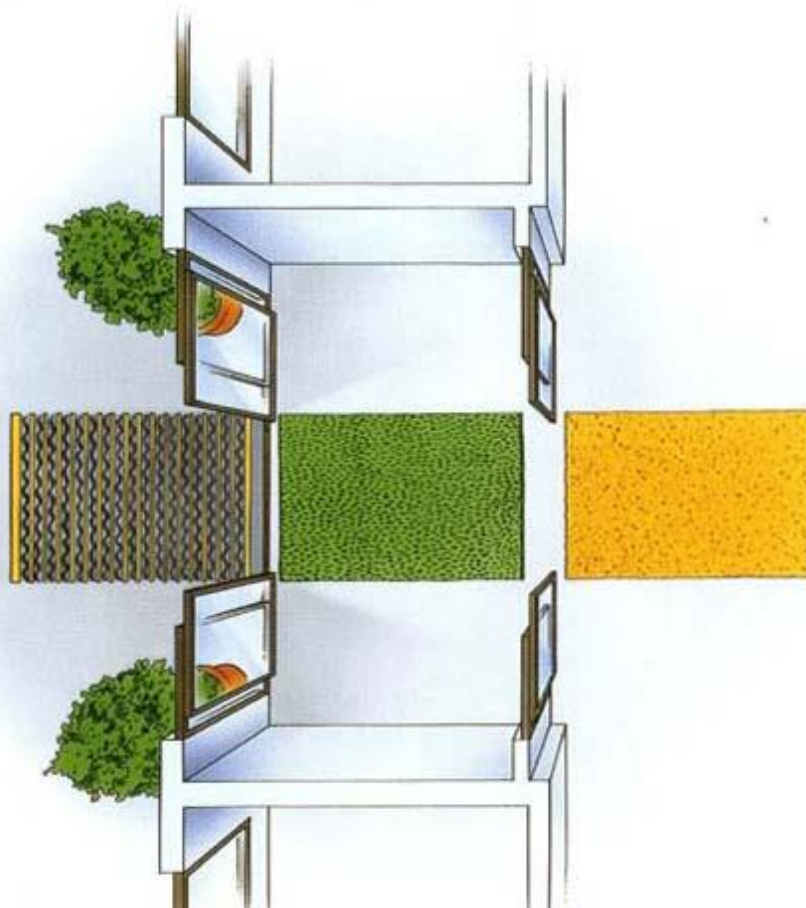
An efficient dirt barrier system should be based on the three-stage principle. There should be a scraper grid nearest the outside, then a "grass" mat and finally a fibre mat to trap and absorb the remaining dirt. The total length of the three mats should ideally be approximately 7-8 metres where possible for heavy traffic entrances.

Protect!

Another important detail is that all chair and table legs should have good quality protective feet. Felt feet are not recommended in commercial interiors. Some form of hard plastic is preferred.



For a cleaner
environment



2. Daily cleaning



1

Dry mopping

Removes dust and dirt from the floor.

Use dry or impregnated yarn, microfibre or disposable mops.



2

Vacuum cleaning

Removes dust and loose dirt from the floor.

Can be used instead of mopping in confined spaces.



3

Damp mopping

The mop is moistened with water or detergent solution; this can be done by either tightly wringing the water from the mop or spraying the mop directly. **Water must not be deposited on the floor.** The floor must be virtually dry after 15-20 seconds.



4

Stain removal

Removal of soil marks in conjunction with cleaning.

Use a beige/red nylon pad with neutral detergent and water solution. Then wipe with clean water.

See the Spot & stain removal, page 15.



5

Combined machine

May be recommended for very busy and large areas. The machine scrubs, cleans and collects the soiled water in one procedure. Both brushes and pads can be used. Beige/red pad is usually sufficient. Mains or battery-powered machines in various sizes and cylinder brush type are available. See the guide to pads, page 17.



The Tarkett maintenance guide for resilient floorcoverings

3. Interim cleaning



6

Spray cleaning (Except for Safe. T floors)

Before spray cleaning, always dry/damp mop or vacuum.
Mix water and neutral detergent or floor maintainer in the container. Suitable speed: 300-1500 rpm.
Be sure to use the correct pad for the correct product (see Guide to pads, page 17).



7

Manual or machine brush cleaning for Safe.T floors

Brush using a neutral floor cleaner (pH 7-10) after vacuuming or damp mopping. Lime scale may form on products installed in wet areas. Lime scale deposit can be removed using an acid cleaner (pH 2-4). Vacuum and rinse with clean water after removal.

Note: always refer to the rates of dilution from the manufacturers.



5

Combined machine

The machine scrubs, cleans and collects the soiled water in one procedure. Both brushes and pads can be used. Beige/red pad is usually sufficient. Mains or battery-powered machines in various sizes and cylinder brush type are available.



4. Periodic cleaning



8



9

Scrubbing

Clean with a single scrubber machine.
Low speed (150-200 rpm).
Red fibre pad is usually sufficient.
See the Guide to pads, page 17.



or



5

Combined machine

The machine scrubs, cleans and collects the soiled water in one procedure. Both brushes and pads can be used. Beige/red pad is usually sufficient. Mains or battery-powered machines in various sizes and cylinder brush-type are available. See the Guide to pads, page 17.



10

Dry buffing (Except for Safe.T floors)

Mostly recommended for iQ vinyl products. Used to restore the floor's surface when it is worn.
After machine scrubbing, floors must always be dry buffed.
Suitable speed is 300-1000 rpm. **Red pads give the best results for homogeneous floorings. White/beige pad for heterogeneous.**
See the Guide to pads, page 17.



11

Gloss and/or protection finish (not for iQ products)

From time to time, PU coated and linoleum floorings may need an additional polish or wax to restore a brighter or more traditional shiny surface.

Other floors (acrylic factory finish or non treated) should need more frequent care: protect the floor with appropriate wax or polish and buff with beige/red pad if needed (depending on soil and traffic).
See the Guide to pads, page 17.



The Tarkett maintenance guide for resilient floorcoverings

Universal procedures for resilient floorcoverings

Methods	Procedure No	iQ-PUR-Reinforced floorings	Safe.T and Multisafe	PU Coated floorings	Factory finish and non-treated floorings	Linoleum
 1. Preventive care Entrance matting	All to use	X	X	X	X	X
 2. Daily cleaning Dry mopping	①	X		X	X	X
 Vacuum cleaning	②	X	X	X	X	X
 Damp mopping	③	X	X	X	X	X
 Stain removal	④	X	X	X	X	X
 Combined machine (very busy and large areas)	⑤	X	X	X	X	X
3. Interim cleaning						
 Spray cleaning	⑥	X		X	X	X
 Manual or machine brush	⑦		X			
 Combined machine	⑤	X	X	X	X	X
4. Periodic cleaning						
 +  Scrubbing+ Wet vacuuming	⑧ + ⑨ or	X	X	X	X	X
 Combined machine	⑤	X	X	X	X	X
 Dry buffing	⑩	X				
 Gloss and/or protection finish	⑪			If needed	X	Sometimes

Protect your investment

By following this cleaning programme carefully, your flooring investment will be maximised.

Subject to products being installed and maintained correctly, Tarkett will support its full product guarantee.