

# TE Technical Finishes

We deliver results



- Industrial
- Commercial
- Aerospace
- Food & Beverage
- Automotive
- Packaging
- Health Care

## SPECIALIST INDUSTRIAL FLOORING





# Specialist Industrial Flooring Solutions

Technical Finishes' Industrial Flooring range has you covered with a wide range of products to meet every need and environment. The range is comprehensive and fulfils every architects and clients need. From thin film, durable epoxy and polyurethane coatings to meet cost effective solutions through to high performance heavy duty systems ranging from 1-2mm chemical resistant epoxy systems up to 6-9mm polyurethane screeds.

Reliable proven technology and formulations to meet tough conditions throughout Africa. The range is also available in a wide range of attractive colours and different non-slip finishes. Our polyscreed PU systems are also HACCP certified for the Food & Beverage industry and contains silver ion technology to provide resistance to bacterial and microbacterial growth.

Technical Finishes serves blue chip & multi-national clients with back to back guarantees utilising certified specialist applicators to provide long lasting flooring solutions. Our national footprint with manufacturing facilities in Johannesburg, Durban & Cape Town, positions us ideally to serve our clients throughout the country and into Africa. Our ability to provide cost-effective, durable and high performance flooring systems applied by trained specialist applicators ensures that our reputation continues to flourish. For over 35 years Technical Finishes has delivered world class flooring products and technology with proven success. We confidently and consistently deliver results!

## Benefits of Specialist Industrial Flooring Systems



Seamless, attractive flooring



Excellent chemical resistance



High durability



Low maintenance and easy to clean



Anti-microbial Silver Ion Technology within the Polyurethane range



HACCP compliant flooring systems



Excellent impact resistance

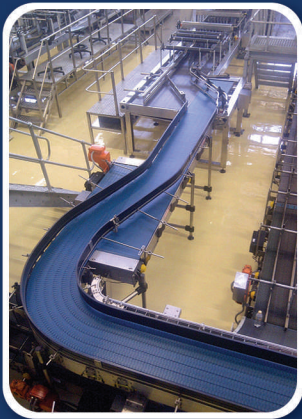


High wear resistance



Optional non-slip systems available

**INDUSTRIAL**



**COMMERCIAL**



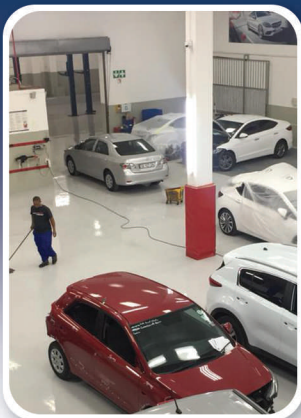
**AEROSPACE**



**FOOD & BEVERAGE**



**AUTOMOTIVE**



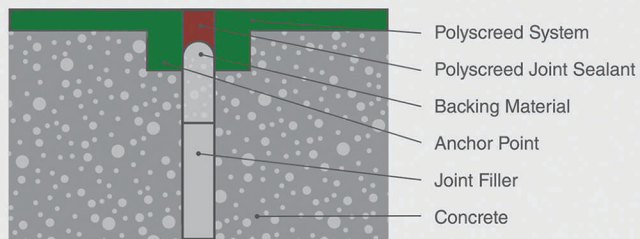
**PACKAGING**



**HEALTH CARE**



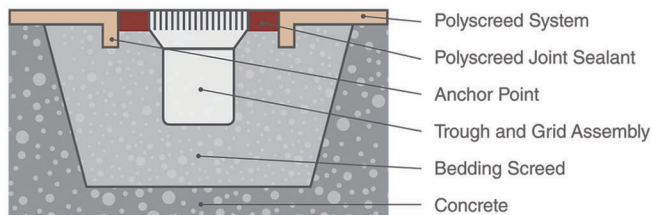
## Typical (expansion) Movement Joint



***A semi-flexible joint solution used to arrest deterioration triggered by existing structural joints.***

This sealant can be applied to floors that have been installed over pre-existing structural movement joints. Designed to be used with Polyscreed systems to prevent ruptures in the new surface.

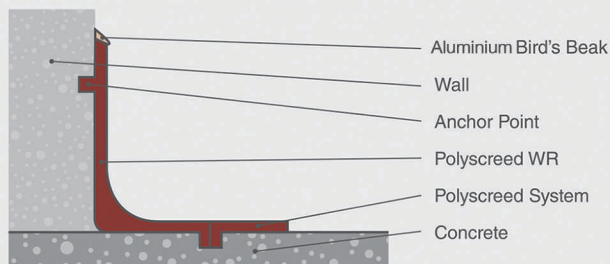
## Typical Drainage Channel Arrangement



***A semi-flexible joint solution allowing for the installation of a drainage system.***

Thermal expansion rates vary and as a result this semi-flexible movement joint has been created to be used as a mechanism to separate Polyscreed material from any stainless steel drainage elements as well as the sub-floor.

## Typical Floor to Wall Detail



***A floor to wall coving system for use with Polyscreed antimicrobial flooring.***

Polyscreed WR Cove is the preferred method to provide a sanitary transition between the Polyscreed material and the adjacent wall. Polyscreed WR Cove is compatible with all systems in the Polyscreed range.





# Epoxy & Polyurethane Floor Coatings

## Solidkote WB

Water-based epoxy coating in clear or various colours, offering an easy to clean cost effective, hygienic coating. Can be applied on damp substrates and is suitable for floor and wall applications. Also available with an anti-fungal additive.

## Solidkote PU

High performance, single pack moisture cured polyurethane coating delivering exceptional scratch and abrasion resistance. Matt or gloss finishes available.

## Solidkote UVC

Tough durable UV resistant and colour stable polyurethane coating for concrete or steel. Clear or various colours are available and can be used for floor or wall applications. A non-slip option is available for wet area application.

## Solidkote Impact

Solvent free high build polyurethane coating with exceptional impact and crack bridging capabilities with a soft feel finish.

## Solidguard HCP

High performance and high chemical resistant epoxy coating specifically formulated for demanding acid or highly alkaline environments. Extremely tough and durable, low odour and ideal for protection of concrete tanks, equipment bases, floors and drains against aggressive chemicals.

## Solidkote Robust

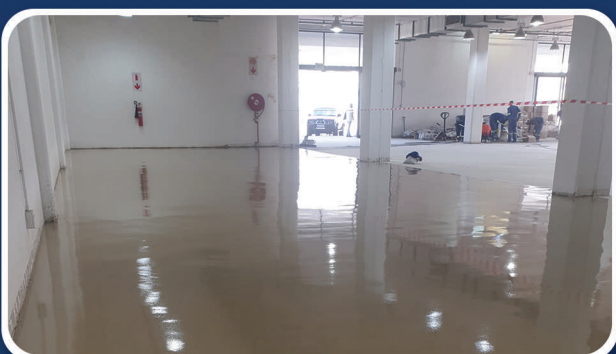
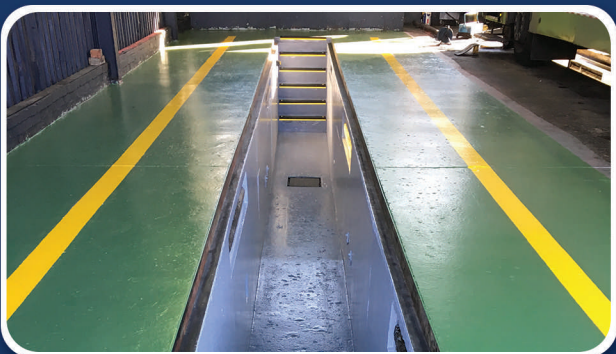
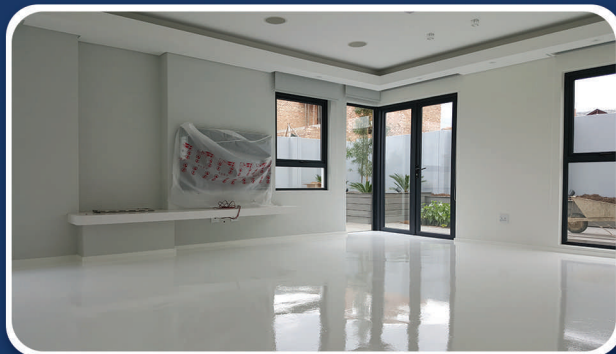
High build epoxy coating delivering a seamless high gloss, durable and chemical resistant floor finish. Ideal for environments needing a cost effective solution in factories, warehouses and plant rooms. An industry standard with proven performance.

## Solidkote Ultra Tough

Rapid cure, impact resistant polyaspartic coating with rapid turnaround and walk on time in 2 hours. Excellent durability, UV resistance and flexibility.

## Solidkote Q9 Sealer

High performance, clear water based polyurethane coating designed for sealing decorative cementitious flooring, terrazzo and concrete. Also suitable for sealing parquet and engineered timber flooring.



\* Please note the colours reproduced here may only be used as a guide as they are subject to printing constraints.

## Colours:





# Self-levelling Screeds

## Solidflow SL1000

Self-levelling 1mm epoxy flooring system offering excellent abrasion and chemical resistance on concrete floors with a seamless, smooth, glossy, hygienic surface ideal for dry processing areas.



## Solidflow SL 2000

Heavy duty 2mm self-levelling epoxy flooring system with exceptional wear, chemical and abrasion resistance. Offering a seamless, hygienic gloss finish.



## Solidflow Impact SL

Self-levelling 1-2mm flexible polyurethane flooring system with excellent crack bridging capabilities. Ideal for cold rooms and suspended floors subject to vibration and movement. The cured product has a "soft" feel under foot with excellent slip resistance and an attractive satin finish. Excellent abrasion and impact resistance.



## Solidflow Hydro Proof

A technically advanced 3 component resin system, with excellent durability, chemical resistance and resistance to moisture, rising damp and hydrostatic pressure. Suitable in areas with no DPC underlayment.



## Colours:

\* Please note the colours reproduced here may only be used as a guide as they are subject to printing constraints.





# Commercial & Decorative Flooring

## Polyscreed Epoxy Terrazzo

A seamless, decorative epoxy resin based terrazzo floor finishing screed. Exhibiting an attractive exposed aggregate texture resulting in a smooth, glossy surface.



## Polyscreed GHF Terrazzo

A unique Polyurethane Terrazzo floor screeding system with an attractive range of coloured aggregates and colours to compliment many environments. This system provides the ultimate in performance flooring with a decorative and aesthetic appeal.



## Polyscreed Quartz

An attractive, colour quartz screed that is power trowelled to achieve ultimate abrasion and wear resistance. This flooring system exhibits an attractive satin finish, ideal for commercial environments.



## Solidkote Metallo

A seamless flooring system that is unique and hand crafted to produce a decorative metallic marbled effect. Available in various colour options which allows one to create floors that are elegantly stylish and individually unique. Perfectly suited for indoor applications of any commercial or residential environment.



## Polyscreed Earth Flow

A decorative PU cement composite self-levelling flooring system designed to provide performance with pleasing aesthetics.



## Solidflow Liquid Stone

A contemporary, minimalistic range of Polyscreed Quartz incorporating pearlescent finish for high end commercial and decorative environments.



## Solidflow Quartz

Self-levelling, decorative 2-4mm epoxy floor system with a unique micro quartz speckled appearance. Ideal for commercial and industrial environments. Available in gloss or matt finish.



\* Please note the colours reproduced here may only be used as a guide as they are subject to printing constraints.



# Polyscreed Polyurethane Floor Screeds

**Heavy duty, high chemical and impact resistant Polyurethane screeds for demanding environments**

## Polyscreed SL

Self-levelling 2-3mm polyurethane screed, excellent chemical resistance with a matt finish. Ideal for light to medium duty environments.

## Polyscreed MD

Self-levelling medium duty 4mm screed for dry or wet areas with mild slip resistance.

## Polyscreed RT

A 6mm durable, easy to apply “rake & trowel” system with a non-slip texture for heavy duty environments.

## Polyscreed HF

Heavy duty, 6-9mm hand trowelled screed for high traffic, wet zones and high temperature exposure.

## Polyscreed UT

An ultra tough, 5mm textured slip resistant screed for heavy-duty zones including wet and slippery environments.

## Polyscreed WR

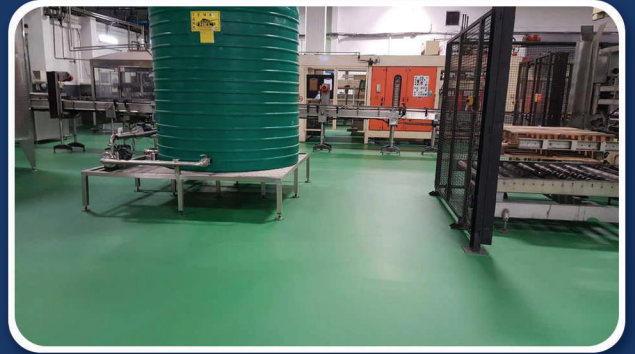
Polyurethane wall render for covings and vertical applications between 3-6mm.

## Polyscreed Lockcoat

Polyurethane sealer coat for Polyscreed WR or rejuvenation of Polyurethane screeds.

## Polyscreed ESD

Heavy duty antimicrobial Polyurethane floor screed to combat electrostatic activity. Solvent and chemical resistant anti-static matt finish.



\* Please note the colours reproduced here may only be used as a guide as they are subject to printing constraints.

## Colours:

Mid Grey



Dark Grey



Beige



Light Stone



Yellow Ochre



Brick Red



Mid Green



Signal Green



Sea Blue





**WE DELIVER RESULTS  
THROUGHOUT AFRICA**



***Technical Finishes***

**We deliver results**

**KWAZULU-NATAL:** 41 Circuit Road, Westmead, Durban • P.O. Box 391, New Germany, 3610  
Tel: +27 31 705 7733 • Fax: +27 31 705 6432

**GAUTENG:** 35 Activia Road, Activia Park, Germiston • P.O. Box 125, Edenvale, 1610  
Tel: +27 11 822 7242 • Fax: +27 11 822 7237

**WESTERN CAPE:** Cnr Gunners Circle & Fisher Avenue, Epping 1, Cape Town • P.O. Box 768, Eppindust, 7475  
Tel: +27 21 535 4455 • Fax: +27 21 535 4467



**info@technicalfinishes.com**



**www.technicalfinishes.com**

